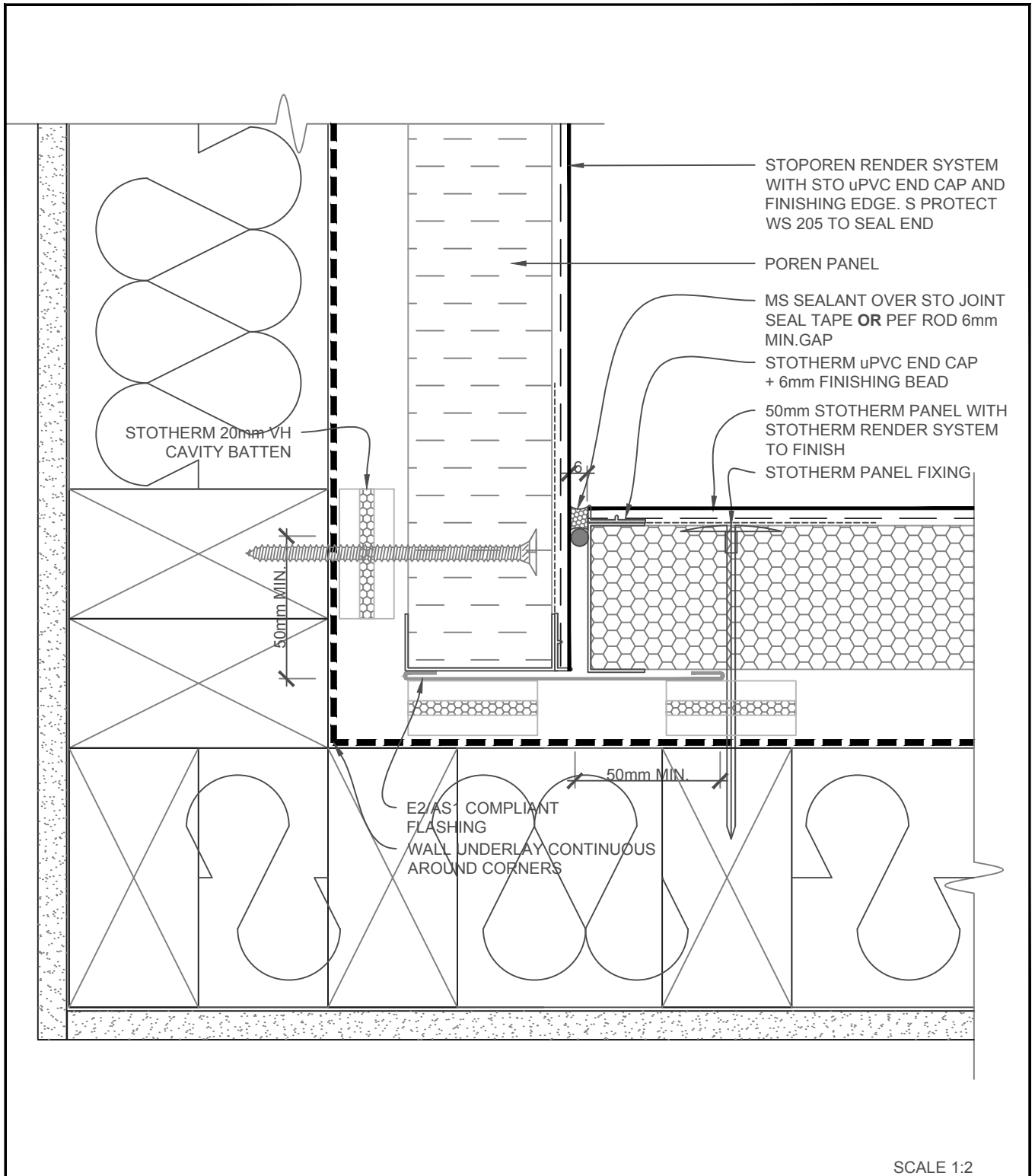


STOTHERM SYSTEM	STOTHERM INSULATED FACADE SYSTEM EXTERNAL CORNER - STOPOREN/STOTHERM	PP 860
		2017

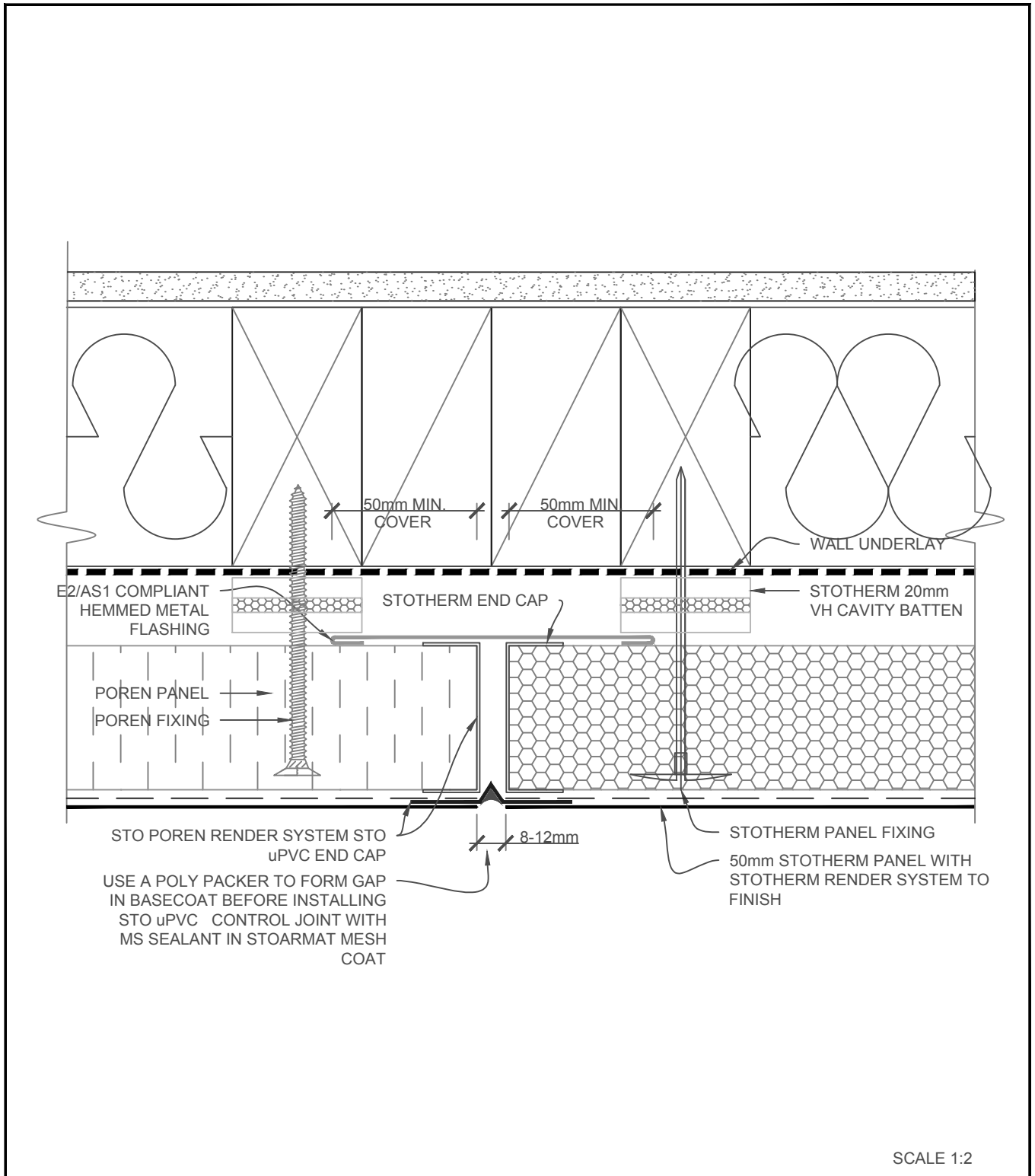
The information contained on this page is based on our experience and research at the date of issue. The detail is for use by Registered Architects, Licensed Designers or Chartered Engineers to assist in developing project details using Sto Systems. Stoanz Ltd reserve the right to alter or update information at any time without prior notice and it is the responsibility of the designer, project manager or Sto contractor to insure they have and use the current Sto details and specifications on site.



SCALE 1:2

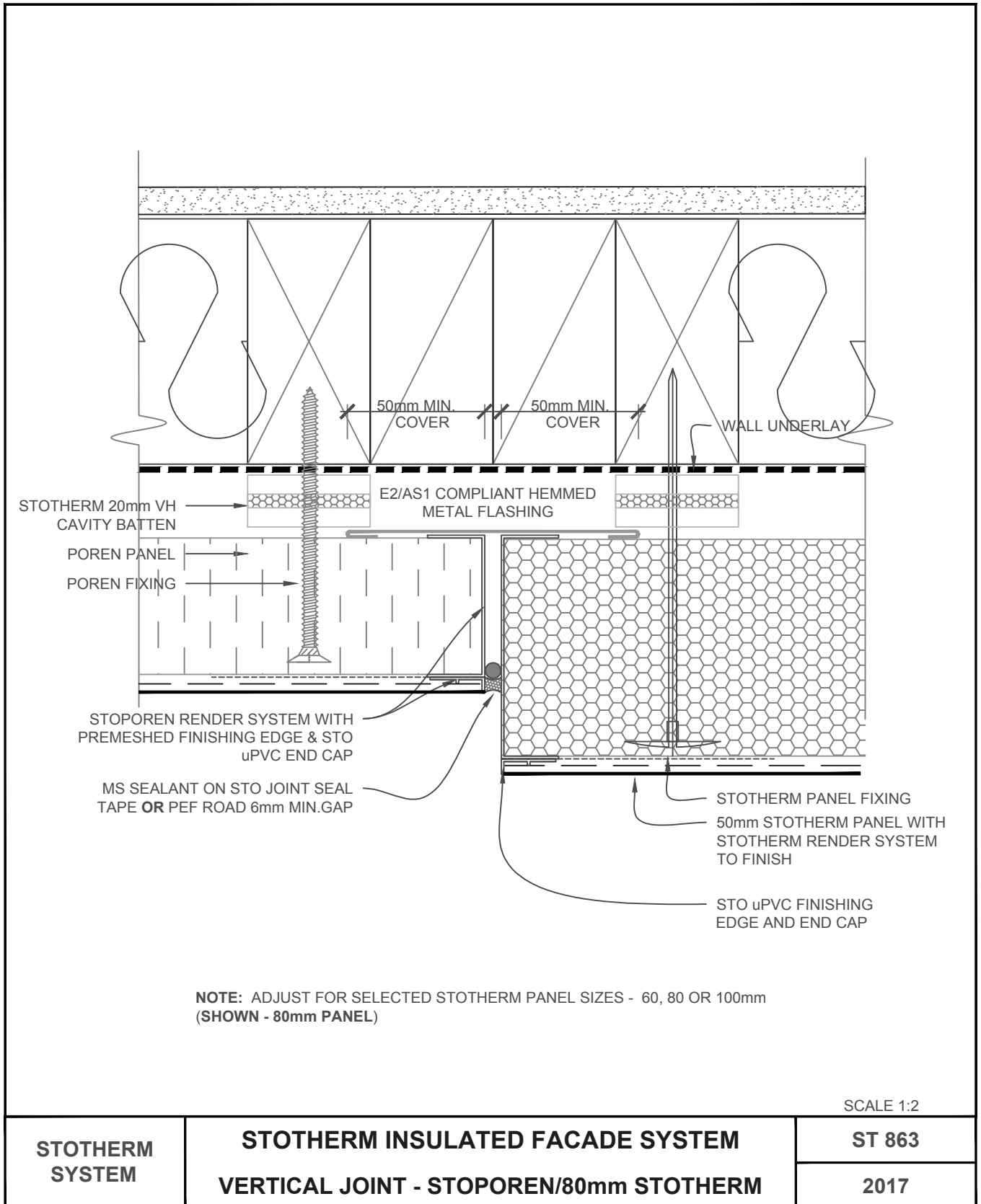
STOTHERM SYSTEM	STOTHERM INSULATED FACADE SYSTEM	ST 861
	INTERNAL CORNER - STOPOREN/STO THERM	2017

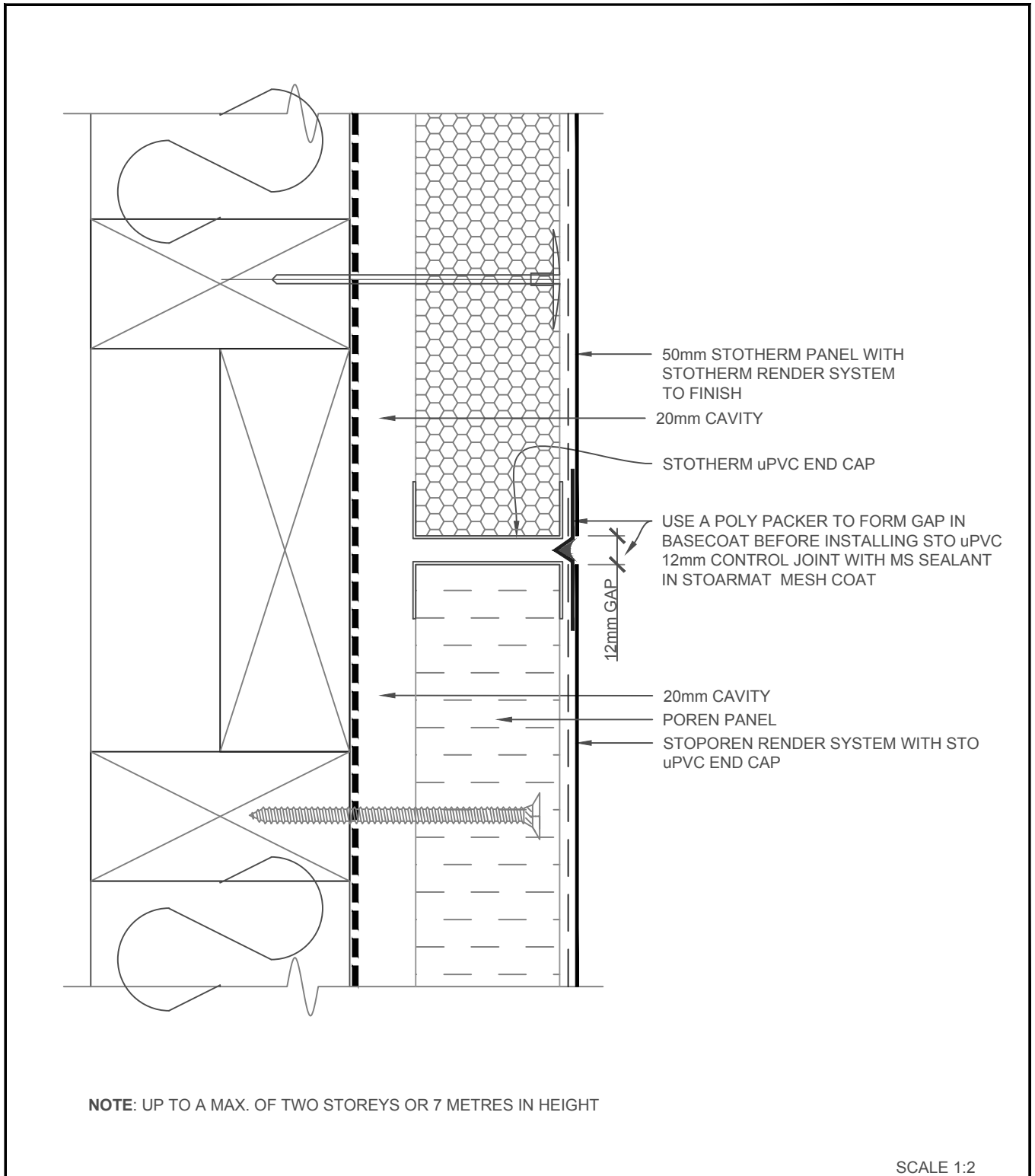
The information contained on this page is based on our experience and research at the date of issue. The detail is for use by Registered Architects, Licensed Designers or Chartered Engineers to assist in developing project details using Sto Systems. Stoanz Ltd reserve the right to alter or update information at any time without prior notice and it is the responsibility of the designer, project manager or Sto contractor to insure they have and use the current Sto details and specifications on site.



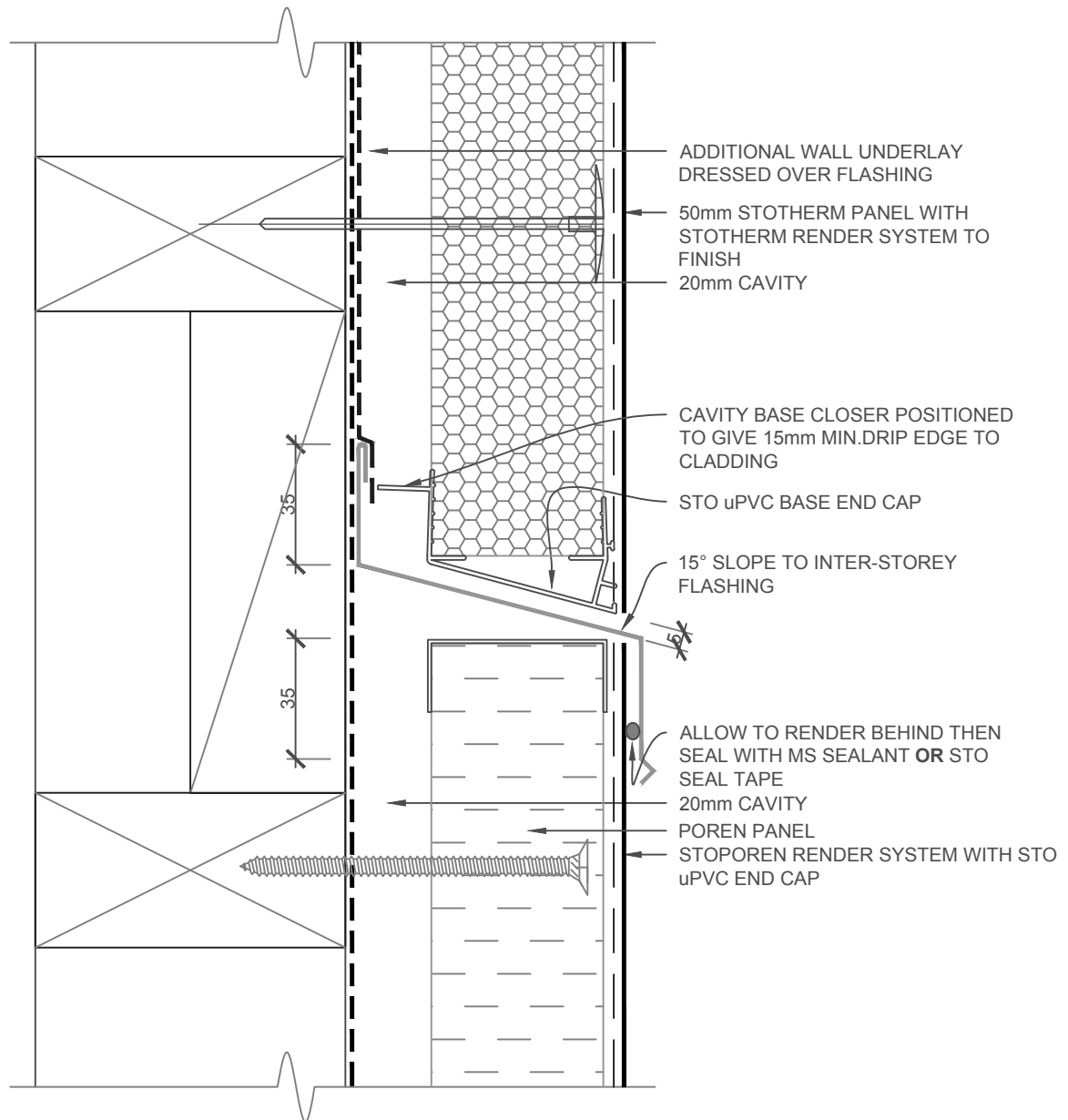
STOTHERM SYSTEM	STOTHERM INSULATED FACADE SYSTEM VERTICAL JOINT - 50mm STO POREN/STOTHERM	ST 862
		2017

The information contained on this page is based on our experience and research at the date of issue. The detail is for use by Registered Architects, Licensed Designers or Chartered Engineers to assist in developing project details using Sto Systems. Stoanz Ltd reserve the right to alter or update information at any time without prior notice and it is the responsibility of the designer, project manager or Sto contractor to insure they have and use the current Sto details and specifications on site.





STOTHERM SYSTEM	STOTHERM INSULATED FACADE SYSTEM	ST 864
	INTER-STOREY JUNCTION - STO POREN/STOTHERM	2017



1. DRAINED INTER-STOREY FLASHING REQUIRED TO LIMIT CONTINUOUS CAVITY CONSTRUCTION TO TWO(2) STOREYS, GABLE END OR 7 METERS
2. IN EXTRA HIGH WIND ZONES INCREASE FLASHING UPSTAND TO 60mm MIN. AND USE A RIGID UNDERLAY

SCALE 1:2

STOTHERM SYSTEM	STOTHERM INSULATED FACADE SYSTEM	ST 865
	THIRD STOREY DRAINED INTER-STOREY JUNCTION	2017