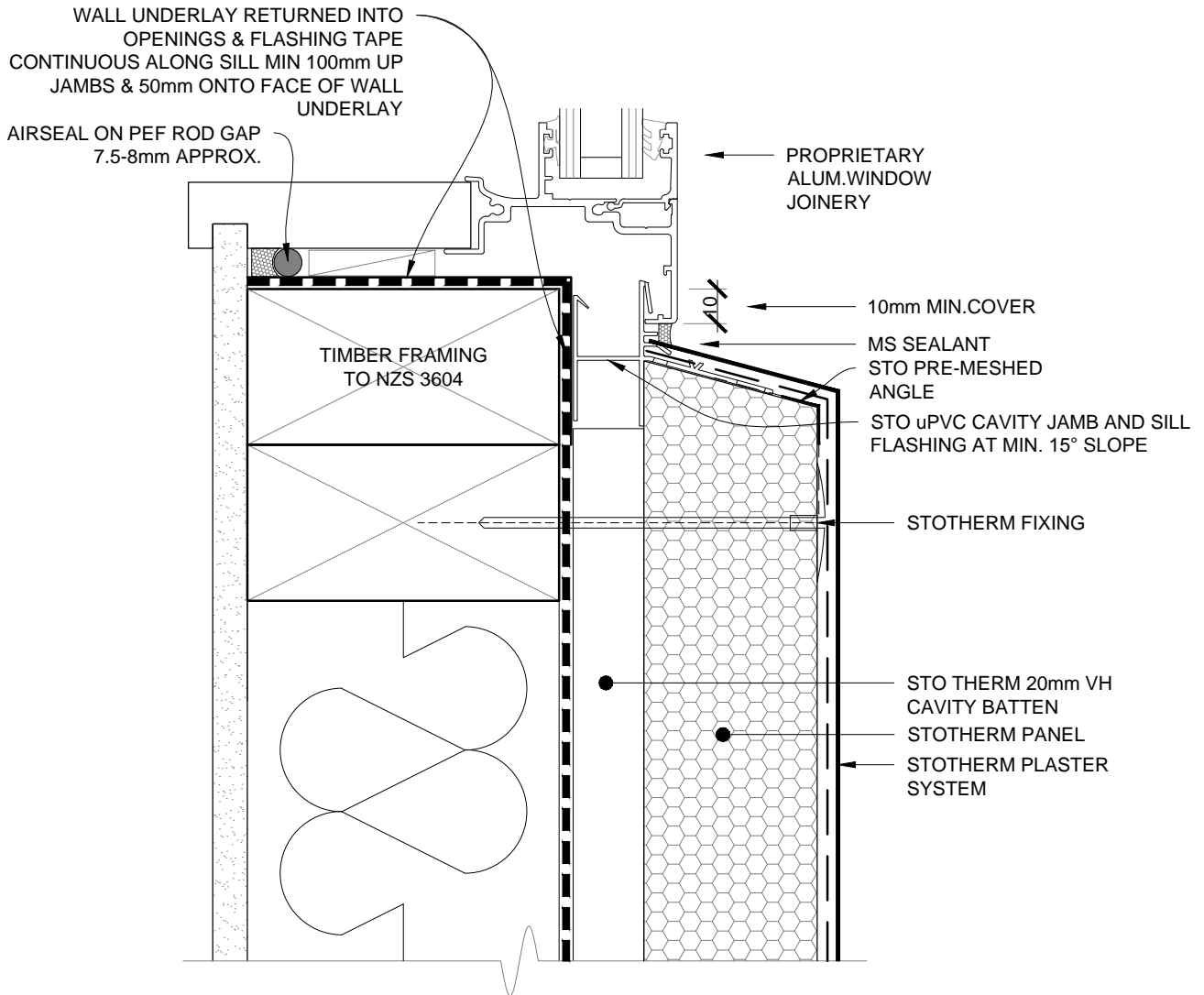


ONLY SUITABLE FOR OPENINGS UNDER 600mm



NOTE: JOINERY SUPPORT BAR REQUIRED ON OPENINGS OVER 600mm.
 1. SEALANT IS APPLIED TO THE SILL AND JAMBS
 2. WINDOW HEADS ARE LEFT OPEN
 3. FLEXIBLE FLASHING TAPE SYSTEM TO BE INSTALLED AROUND JOINERY OPENINGS AS PER E2/AS1 DETAILS

WARNING: SOME BRANDS OF ALUMINIUM JOINERY HAVE DRAINAGE VENTS IN THE BOTTOM EDGE OF THE SILL FLANGE. ENSURE DRAINAGE VENTS REMAIN CLEAR.

SCALE 1:2

STOTHERM SYSTEM	STOTHERM CONSTRUCTION SYSTEM	ST 403
	ALUMINIUM JOINERY - SILL DETAIL - OPT 2	2014

The information contained in this detail is based on our experience and testing and represents the latest information available at the date of issue. This detail is intended for use by the design professional and users of Sto products to assist in developing specific project details to be used in conjunction with a Sto Specification. We reserve the right to alter or update information at any time without prior notice & it is the responsibility of the specifier and/or the project manager to insure that they have the current Sto details and specifications.