

## STO DRAWING REGISTER

Drawing Description

Drawing No.

### Drawing Register

CB 001 - 002

#### Introduction Series 000

Sto Concrete Block Construction & Detailing  
Sto Concrete Block Construction & Detailing  
Sto Concrete Block Construction & Detailing  
Sto Concrete Block Plaster System

CB 003  
CB 004  
CB 005  
CB 006

#### Block Layout Series 100

Sto Concrete Block Stoarmat Miral System - Isometric

CB 100

#### Foundation Series 200

Sto Concrete Block Rebated Slab-on-Ground  
Sto Concrete Block Non-Rebated Slab-on-Ground  
Sto Concrete Block Strip Footing Detail  
Sto Concrete Block Tanking to Plaster Transition

CB 200  
CB 201  
CB 202  
CB 203

#### Walls Series 300

Sto Concrete Block Vertical Control Joint  
Sto Concrete Block Stair Waterproofing Detail  
Sto Concrete Block Inter-Storey Slab Detail

CB 300  
CB 301  
CB 302

#### Wall Penetrations & Fittings Series 350

Sto Concrete Block Pipe Penetration (up to 150mm Ø) Detail  
Sto Concrete Block Meterbox  
Sto Concrete Block Fan Vent Detail  
Sto Concrete Block Architectural Profile  
Sto Concrete Block Handrail  
Sto Concrete Block RWH/Scupper Opening

CB 350  
CB 351  
CB 352  
CB 353  
CB 354  
CB 355

#### Joinery Series 400

Sto Concrete Block Alu.Joinery - Head & Sill Detail  
Sto Concrete Block Alu.Joinery - Jamb Detail  
Sto Concrete Block Alu.Entry Door Head & Threshold Detail  
Sto Concrete Block Alu.Entry Door Jamb Detail  
Sto Concrete Block Timber Joinery - Head & Sill Detail  
Sto Concrete Block Timber Joinery - Jamb Detail  
Sto Concrete Block Timber Entry Door Head & Threshold Detail  
Sto Concrete Block Timber Entry Door Jamb Detail

CB 400  
CB 401  
CB 402  
CB 403  
CB 404  
CB 405  
CB 406  
CB 407

#### Parapets, Balustrades, Decks Series 500

Sto Concrete Block Parapet/Metal Flashing Detail  
Sto Concrete Block Plastered Parapet/Balustrade Detail  
Sto Concrete Block Uncoated, Painted, Clear Coated or Plastered Parapet Detail  
Sto Concrete Block Parapet/Roof/Wall Detail  
Sto Concrete Block StoFlexyl Waterproofing Membrane - Isometric

CB 500  
CB 501  
CB 502  
CB 503  
CB 504

THESE DETAILS ARE ISSUED AS A GUIDE INCORPORATING STANDARD BUILDING PRACTICES.  
ALWAYS REFER TO MANUFACTURERS CURRENT DETAILS AND SPECIFICATIONS.  
THE SEQUENCE OF WORK COVERS VARIOUS BUILDING COMPONENTS, EACH TRADE IS  
RESPONSIBLE TO ENSURE THEIR ELEMENTS ARE FULLY INCALLED INCLUDING ALL  
WATERPROOFING/SEALANT/ FLASHINGS AS IS APPLICABLE.

PAGE 1 OF 2

**STO CONCRETE  
BLOCK**

**STO CONCRETE BLOCK  
DRAWING REGISTER**

**CB 001**

**2014**

The information contained in this detail is based on our experience and testing and represents the latest information available at the date of issue. This detail is intended for use by the design professional and users of Sto products to assist in developing specific project details to be used in conjunction with a Sto Specification. We reserve the right to alter or update information at any time without prior notice & it is the responsibility of the specifier and/or the project manager to insure that they have the current Sto details and specifications.

## STO DRAWING REGISTER

Drawing Description

Drawing No.

### Soffit Series 600

Sto Concrete Block Eaves with Overhang	CB 600
Sto Concrete Block Eaves without Overhang	CB 601
Sto Concrete Block Barge with Overhang	CB 602
Sto Concrete Block Roof to Conc.Block Gable End	CB 603
Sto Concrete Block Raking Soffit (Reversed)	CB 604

### Roof Series 700

Sto Concrete Block Gable End/Roof Junction	CB 700
Sto Concrete Block Apron Flashing	CB 701
Sto Concrete Block Parallel Roof/Hidden Gutter	CB 702
Sto Concrete Block Face Fixed Fascia/Membrane Roof	CB 703

### Dissimilar Material

### Bevel-Back Weatherboard Series 800

Sto Concrete Block Ext.Corner	CB 800
Sto Concrete Block Int.Corner	CB 801
Sto Concrete Block Horizontal Junction	CB 802

**Brick Series 810** series *not* issued

**Fibre Cement Sheet Series 820** series *not* issued

**Manufactured Stone - Schist & Natural Stone Series 840** series *not* issued

### Profile Metal Series 850

Sto Concrete Block Ext.Cnr Horiz.Profiled Metal	CB 850
Sto Concrete Block Int.Cnr Horiz.Profiled Metal	CB 851
Sto Concrete Block Horizontal Junction Horiz.Profiled Metal	CB 852
Sto Concrete Block External Corner Vertical Profiled Metal	CB 853
Sto Concrete Block Internal Corner Vertical Profiled Metal	CB 854
Sto Concrete Block Horiz.Junction Vertical Profiled Metal	CB 855

**Stootherm Panel EIPS 860** series *not* issued

**DISSIMILAR JOINERY Series 870** series *not* issued

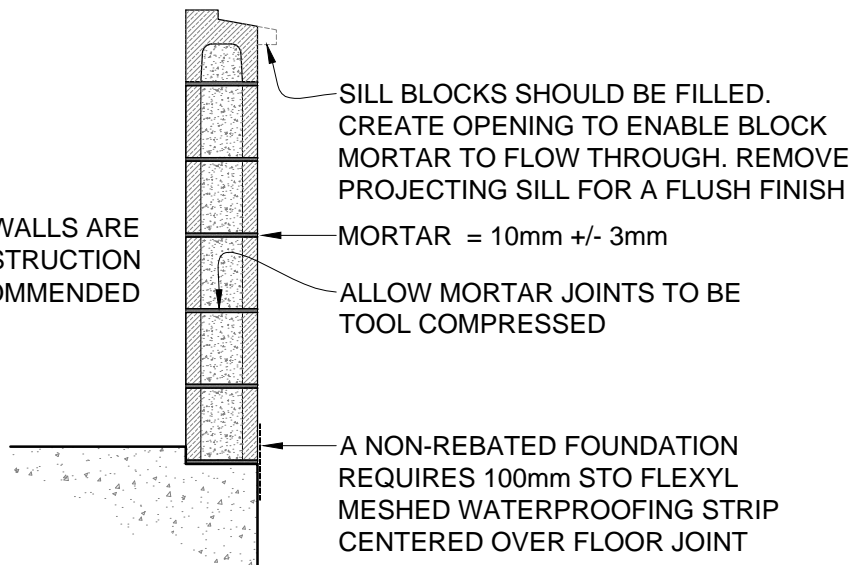
THESE DETAILS ARE ISSUED AS A GUIDE INCORPORATING STANDARD BUILDING PRACTICES.  
ALWAYS REFER TO MANUFACTURERS CURRENT DETAILS AND SPECIFICATIONS.  
THE SEQUENCE OF WORK COVERS VARIOUS BUILDING COMPONENTS, EACH TRADE IS  
RESPONSIBLE TO ENSURE THEIR ELEMENTS ARE FULLY INCALLED INCLUDING ALL  
WATERPROOFING/SEALANT/ FLASHINGS AS IS APPLICABLE.

PAGE 2 OF 2

STO CONCRETE BLOCK	STO CONCRETE BLOCK DRAWING REGISTER	CB 002
		2014

The information contained in this detail is based on our experience and testing and represents the latest information available at the date of issue. This detail is intended for use by the design professional and users of Sto products to assist in developing specific project details to be used in conjunction with a Sto Specification. We reserve the right to alter or update information at any time without prior notice & it is the responsibility of the specifier and/or the project manager to insure that they have the current Sto details and specifications.

ENSURE CONC.BLOCK WALLS ARE SUPPORTED DURING CONSTRUCTION  
45mm MIN.REBATE IS RECOMMENDED



NOTE:

1. MAIN CONTRACTOR IS TO ENSURE SEPARATE WALLS, STAIRS or DISSIMILAR MATERIAL AGAINST BLOCKWORK ARE WATERPROOFED AS NECESSARY TO FORM A **WATERTIGHT** CONNECTION WITH THE **STO PLASTER SYSTEM**
2. IT IS CRITICAL IN PARTIALLY FILLED BLOCKS THAT JOINTS ARE TOOLED FOR **EARTHQUAKE** RESISTANCE
3. MASONRY CONCRETE BLOCKS as per NZS4210 / 4229 & 4230 or SPECIFIC ENGINEER DESIGN
4. ALLOW ADEQUATE TIME FOR BLOCKS TO DRY/STABILISE BEFORE PLASTERING. IN **NORMAL DRYING** CONDITIONS 4-8 WEEKS
5. CONTROL JOINTS - REFER ENGINEERS SPECIFICATION, BLOCK MANUFACTURERS RECOMMENDATION or NZS4229

SCALE 1:20

STO CONCRETE BLOCK	STO CONCRETE BLOCK CONSTRUCTION & DETAILING	CB 003
		2014

## CONCRETE BLOCK CONSTRUCTION & DETAILING

### Responsibility

All work in this section shall be the responsibility of the *Main Contractor*. All concrete block construction must be in accordance with the project drawings, specifications and block manufactures technical data. The *Main Contractor* is to ensure they are fully conversant with all **Sto** standard installation and fixing details (**Sto** ACAD details [www.sto.co.nz](http://www.sto.co.nz)) and their responsibilities before the block works commences. The *Main Contractor* is also responsible for all liaison with the various sub contractors to ensure that all items or elements affecting the **Sto Plaster System** are correctly detailed before installing the **StoArmat Miral Plaster System**.

### Concrete Blocks

The concrete block installation including reinforcement and concrete infill shall be made in strict accordance with the project drawings, specifications and the block manufactures technical documentation. In particular the blocks shall be laid true in both vertical and horizontal planes with all joinery and service openings correctly formed and waterproofed in accordance with **Sto** details. Control joints must be installed as per the projects structural drawings or manufactures details to manage shrinkage and structural stress. The ground floor slab to block junction should be rebated to provide waterproofing and inter-storey floors should be poured within the block structure leaving the outer block shell to continue to avoid cracking. At least 28 days should be allowed after concrete placement - as per **AS/NZS 2311:2000** for curing and stabilization to take place before commencing the **StoArmat Miral Plaster System**. All maximum tolerances shall be in strict accordance with NZS4210:2001 2.7.1.4, Table 2.2 IE: no more than 3mm surface alignment deviation over a 1200mm radius. The concrete blocks shall be clean, dry and free of all surface contaminants before plastering and the Main Contractor is to ensure that any area or details adjacent to the **Sto Plaster System** have been adequately waterproofed or flashed to avoid any water migration behind the plaster system.

### Construction Block Construction

- A rebate is recommended in foundations for residential projects unless an exterior insulation system is detailed.
- Joinery openings are to be formed using rebated blocks & sill blocks (*cut sill flush as required*).
- Blocks should be covered on site and laid dry.
- Vertical control joints are placed at 6.0M max.centres - refer project documentation and NZS4229 for placement and detailing.
- Mortar to be 12.5MPa min.tool smooth and compressed as per NZS4210
- Manufacturers bagged mortar is recommended to meet the specifications
- Mortar to full depth of webbing up to 20MM thick in first course and then 10MM +/- 3mm
- Washout ports required to remove mortar droppings from foundation
- Ensure there is no impediment to grout flow, remove ends or biscuits to prevent air pockets
- Stack bonded, column blocks and insulation block voids may need to be grouted by the block layer during laying process to ensure a solid fill is achieved
- Blocks should be filled in 1.2 lifts and mechanically vibrated to avoid air voids and subsequent efflorescence
- Sill block should be filled by leaving one sill block out to avoid air entrapment
- Remove any grout slurry from block faces before it sets

STO CONCRETE BLOCK	STO CONCRETE BLOCK CONSTRUCTION & DETAILING	CB 004
		2014

The information contained in this detail is based on our experience and testing and represents the latest information available at the date of issue. This detail is intended for use by the design professional and users of Sto products to assist in developing specific project details to be used in conjunction with a Sto Specification. We reserve the right to alter or update information at any time without prior notice & it is the responsibility of the specifier and/or the project manager to insure that they have the current Sto details and specifications.

## CONCRETE BLOCK CONSTRUCTION & DETAILING.....cont.

### Construction Block Construction

- Drying times vary according to block thickness, grout and weather. A min.28days is required for settlement & curing - the blocks must be completely dry before coating
- Where occupied walls are back filled a 50 year tanking membrane is required.
- Always waterproof blocks behind or adjacent to any overlays or abutments such as concrete staircases, separate adjoining garden walls, soffits, porches, posts etc.
- Exposed tops of walls require waterproofing and should be finished with block caps

### Exterior Insulation - refer to *Sto Concrete Block Insulation Details*

NZBC *Acceptable Solution H1/AS1* or NZBC *Verification Method H1/VM1* can be used for housing, communal residential, communal non-residential and commercial buildings. For buildings with a glazing area of 30% or less of the total wall area, the minimum wall R-values required for solid construction are:

**Climate Zone 1** (Nth Coromandel) - R0.8 (option 1a and 1b)

**Climate Zone 2** Nth Island, Sth Coromandel excluding the Central Plateau - R1.0 (option 2a) or R0.9 (option 2b)

**Climate Zone 3** Sth Island and Central Plateau) - R1.2 (option 3a) or R1.0 (option 3b)

Refer to the **BRANZ House Insulation Guide Third Edition** for further information and construction R-values for concrete block construction with External Insulation.

### Interior Insulation

Generally involves 90mm framing inside and installing insulation to meet 1.9 or 2.0 R-Value

**Note:** H1 Insulation - Internally insulated masonry walls must meet the *timber insulation code*

STO CONCRETE BLOCK	STO CONCRETE BLOCK CONSTRUCTION & DETAILING	CB 005
		2014

## STO CONCRETE BLOCK PLASTER SYSTEM

### StoArmat Reinforced Plaster System

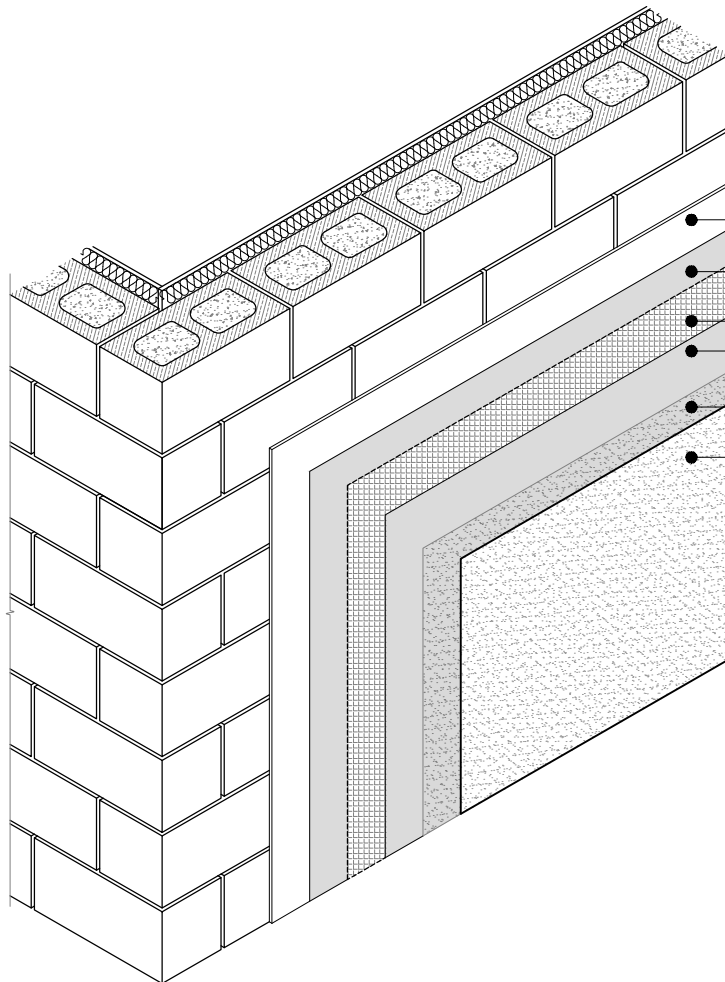
To combat fractures and stress that can occur in concrete block construction during the curing and settling process. The **StoFlexyl waterproofing membrane** is to ensure openings, junctions, terminations and overlays are waterproofed.

### SS202 STOARMAT MIRAL PLASTER SYSTEM BRANZ APPRAISAL CERTIFICATE No.515 INCORPORATING:

1. *Stoflexyl Waterproofing* 18Kg pail plus cement evaluated by BRANZ to meet AS/NZS4858 waterproofing membrane requirements as required by NZBC E2/AS1
2. *Levellite Base Plaster* 20Kg bag mineral fibre reinforced based plaster with EPS bead for levelling and straightening walls. Can be machine applied
3. *StoArmat Classic Plaster* 23Kg pail European fibre reinforced non-cement based crack resistant plaster used with European mesh as a reinforcement plaster
4. *Stolit Coloured Finishing Render* in 25Kg Pail
  - Stolit K* - 1.0mm Coloured Float Finish Render
    - 1.5mm Coloured Float Finish Render
    - 2.0mm Coloured Float Finish Render
    - 3.0mm Coloured Float Finish Render
  - Stolit* - MP Fine Sponge or Adobe Coloured Finishing Render
  - MP Natural Sponge or Adobe Coloured Finishing Render
  - Milano Smooth or Adobe Coloured Finishing Render

STO CONCRETE BLOCK	STO CONCRETE BLOCK PLASTER SYSTEM	CB 006
		2014

The information contained in this detail is based on our experience and testing and represents the latest information available at the date of issue. This detail is intended for use by the design professional and users of Sto products to assist in developing specific project details to be used in conjunction with a Sto Specification. We reserve the right to alter or update information at any time without prior notice & it is the responsibility of the specifier and/or the project manager to insure that they have the current Sto details and specifications.



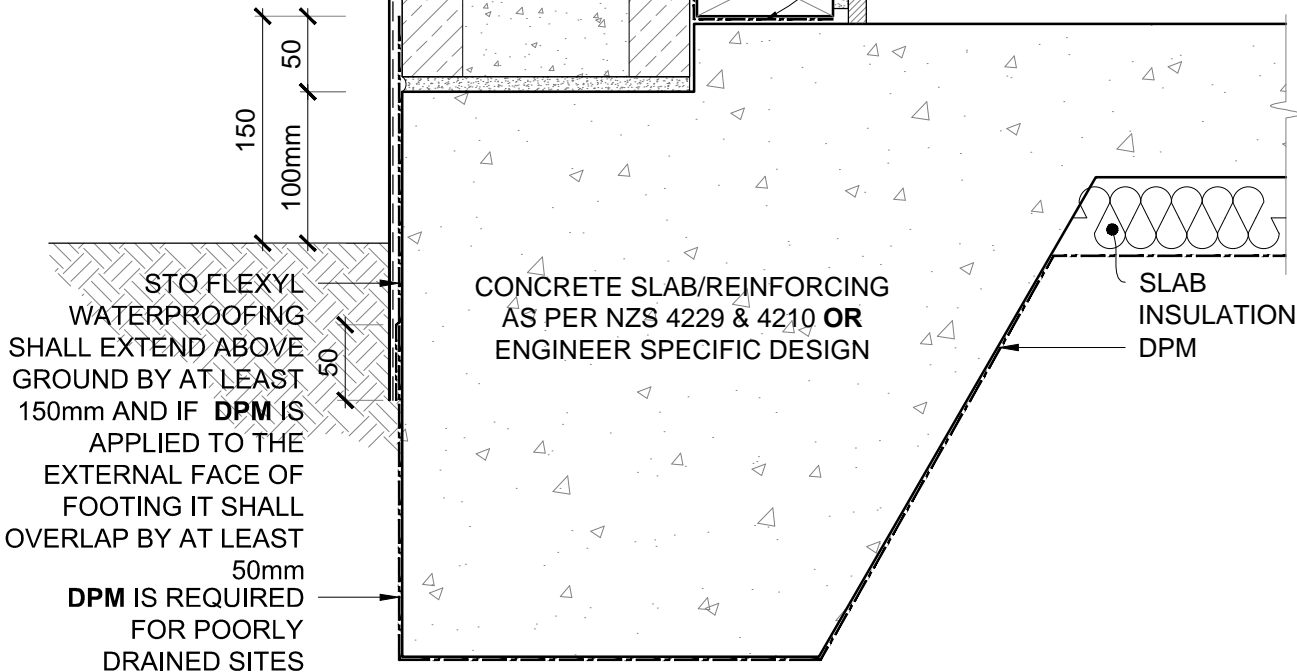
**STOARMAT MIRAL PLASTER  
SYSTEM - SS202**

- BASECOAT: LEVELLITE 6/8mm PLASTER
  - REINFORCEMENT: STOARMAT CLASSIC PLASTER PLUS: STO EUROPEAN MESH
  - SKIM COAT: STOARMAT CLASSIC PLASTER
  - FINISHING RENDER: STOLIT K & MP RANGE
  - STOLIT K COLOURED FINISH RENDER 1.0, 1.5, 2.0 & 3.0mm FLOAT FINISH.
  - STOLIT MP COLOURED FINISH RENDER MP, MP NATURAL & MILANO FINE FINISH
- COATING/STO COLOR:
- :MAXICRYL MATT FACADE PAINT
  - :LASTIC SATIN FACADE PAINT
  - :LOTUSAN MINERAL RESIN PAINT

SCALE 1:20

<b>STO CONCRETE BLOCK</b>	<b>STO CONCRETE BLOCK</b> <b>STOARMAT MIRAL PLASTER SYSTEM - ISOMETRIC</b>	<b>CB 100</b>
		<b>2014</b>

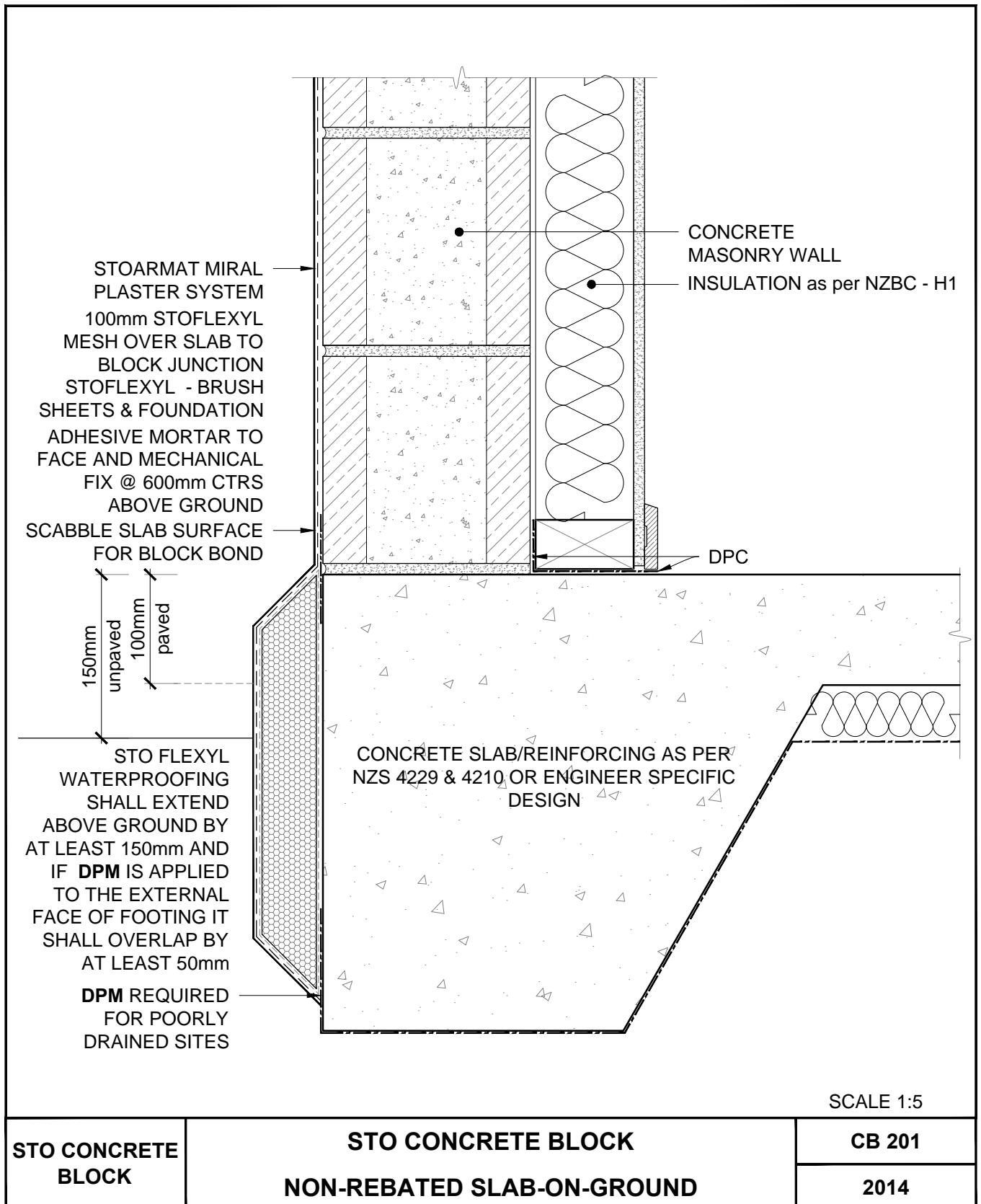
The information contained in this detail is based on our experience and testing and represents the latest information available at the date of issue. This detail is intended for use by the design professional and users of Sto products to assist in developing specific project details to be used in conjunction with a Sto Specification. We reserve the right to alter or update information at any time without prior notice & it is the responsibility of the specifier and/or the project manager to insure that they have the current Sto details and specifications.



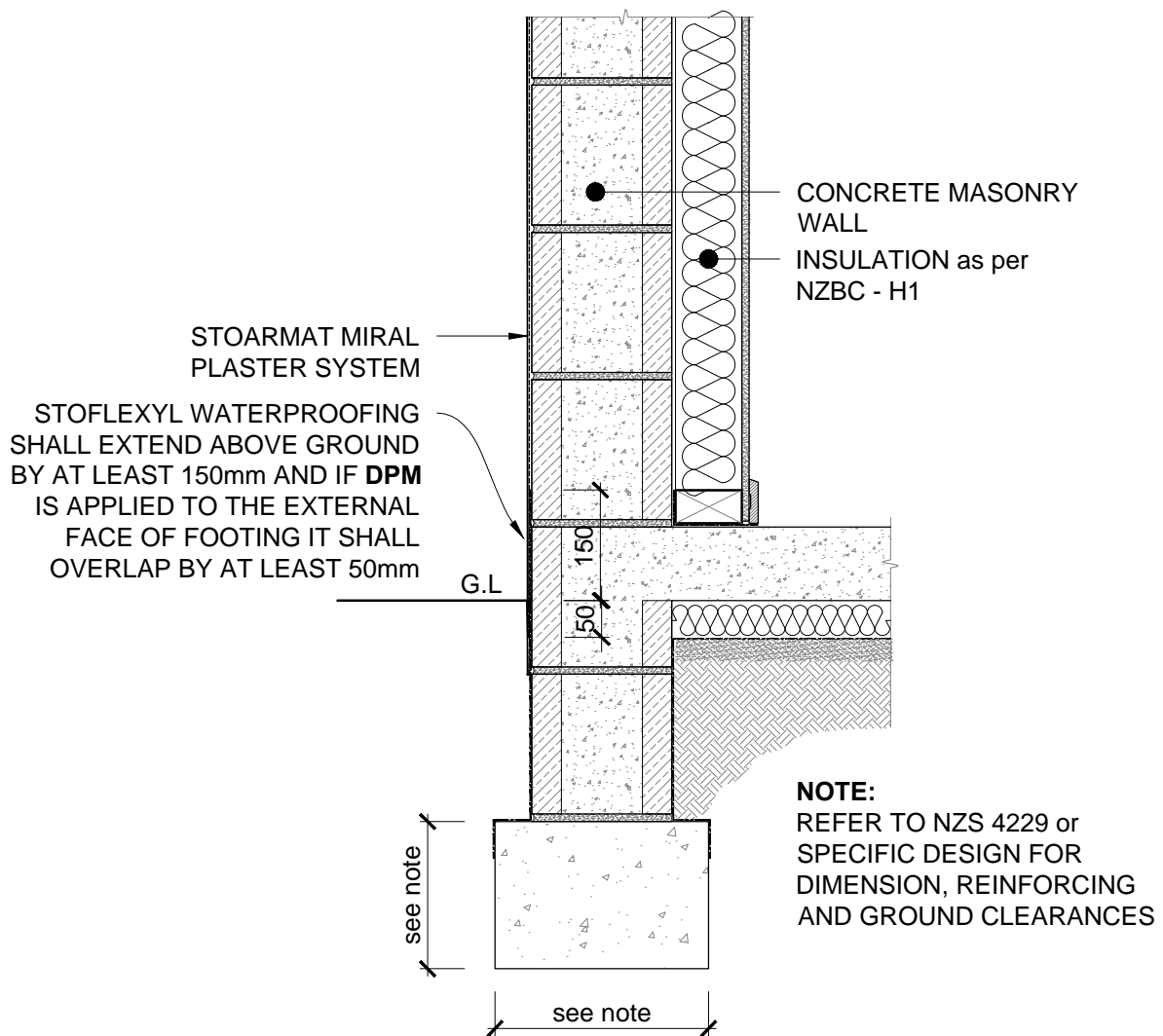
SCALE 1:5

STO CONCRETE BLOCK	STO CONCRETE BLOCK	CB 200
	REBATED SLAB-ON-GROUND	2014

The information contained in this detail is based on our experience and testing and represents the latest information available at the date of issue. This detail is intended for use by the design professional and users of Sto products to assist in developing specific project details to be used in conjunction with a Sto Specification. We reserve the right to alter or update information at any time without prior notice & it is the responsibility of the specifier and/or the project manager to insure that they have the current Sto details and specifications.



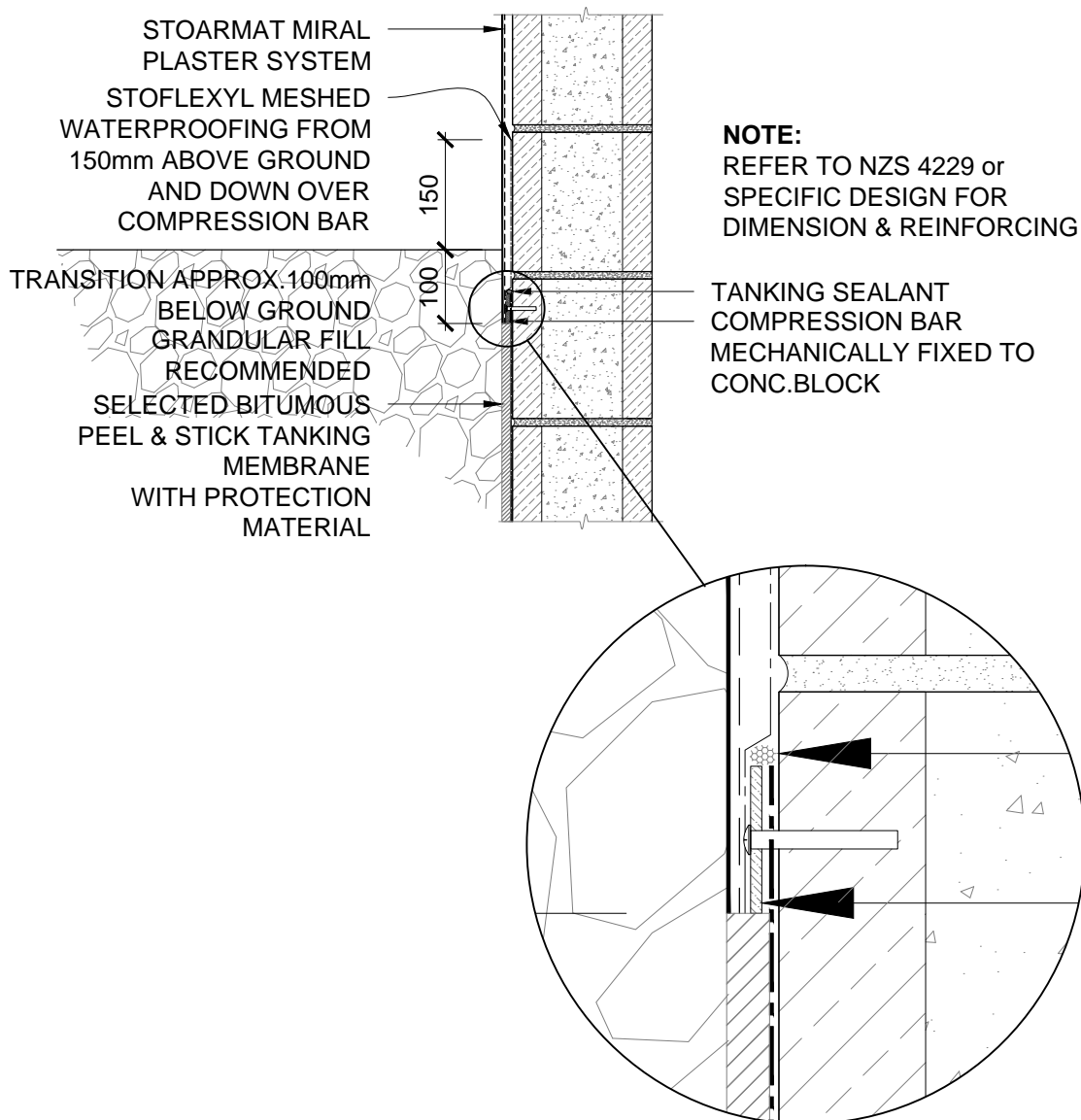
The information contained in this detail is based on our experience and testing and represents the latest information available at the date of issue. This detail is intended for use by the design professional and users of Sto products to assist in developing specific project details to be used in conjunction with a Sto Specification. We reserve the right to alter or update information at any time without prior notice & it is the responsibility of the specifier and/or the project manager to insure that they have the current Sto details and specifications.



SCALE 1:10

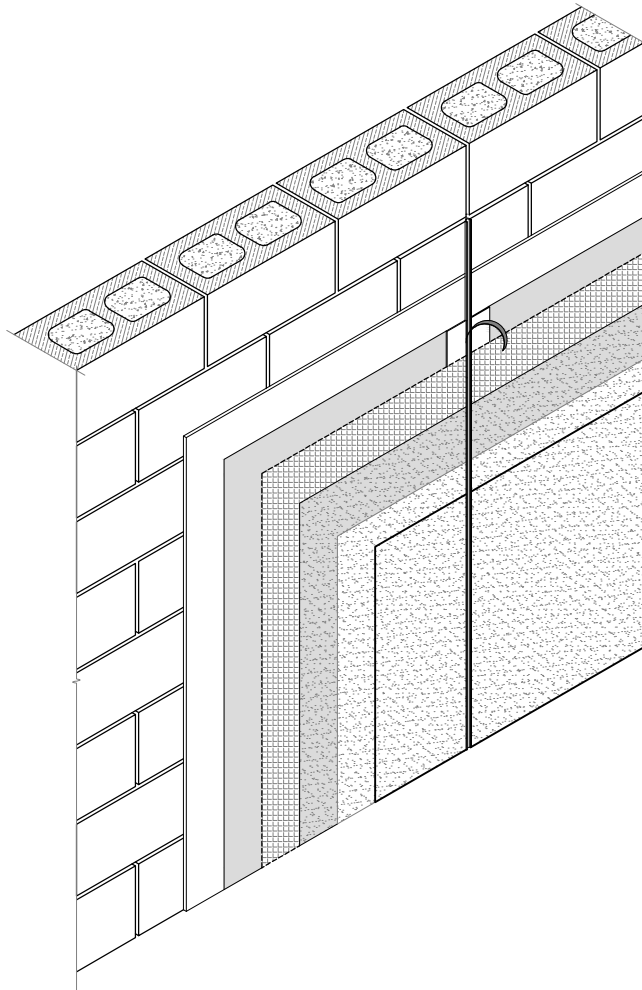
STO CONCRETE BLOCK	STO CONCRETE BLOCK STRIP FOOTING DETAIL	CB 202
		2014

The information contained in this detail is based on our experience and testing and represents the latest information available at the date of issue. This detail is intended for use by the design professional and users of Sto products to assist in developing specific project details to be used in conjunction with a Sto Specification. We reserve the right to alter or update information at any time without prior notice & it is the responsibility of the specifier and/or the project manager to insure that they have the current Sto details and specifications.



STO CONCRETE BLOCK	STO CONCRETE BLOCK TANKING TO PLASTER TRANSITION	CB 203
		2014

The information contained in this detail is based on our experience and testing and represents the latest information available at the date of issue. This detail is intended for use by the design professional and users of Sto products to assist in developing specific project details to be used in conjunction with a Sto Specification. We reserve the right to alter or update information at any time without prior notice & it is the responsibility of the specifier and/or the project manager to insure that they have the current Sto details and specifications.



**BLOCK CONTROL JOINT**

BASECOAT: LEVELLITE 6/8mm  
 REINFORCEMENT: STOARMAT CLASSIC  
 STO 8 mm uPVC JOINT IN STOARMAT MESH COAT  
 FINISHING RENDER: STOLIT K & MP RANGE

VERTICAL CONTROL JOINTS AT BLOCK  
 CONTROL JOINTS - NORMALLY @6.0M  
 CENTERS or AS PER PROJECT DRAWINGS

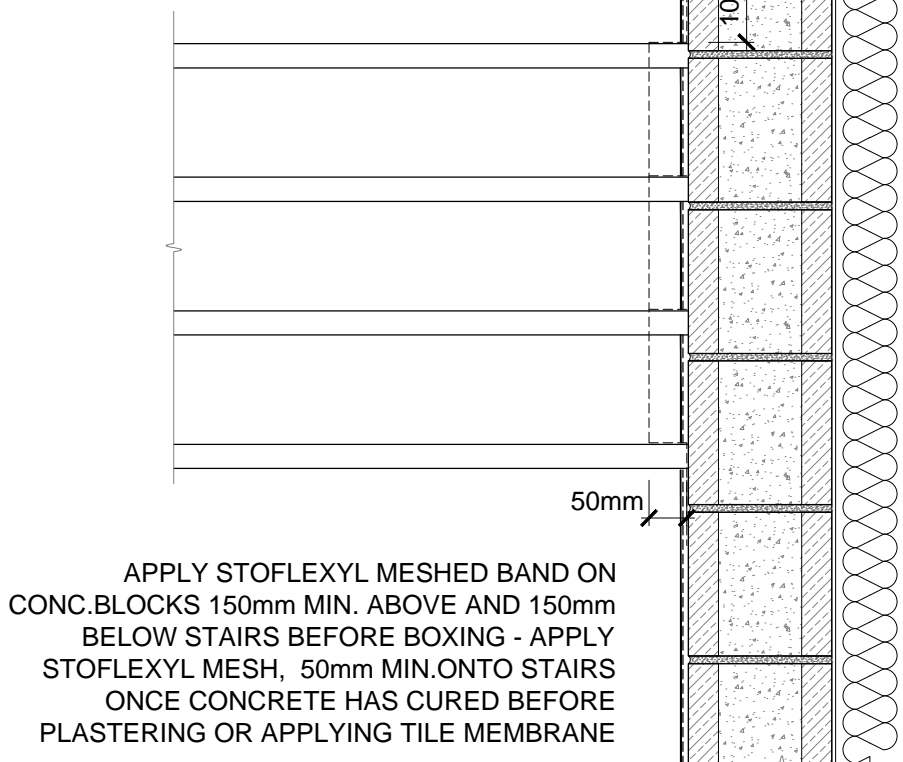
**NOTE:**  
 WHEN FITTING THE STO CONTROL JOINT, PULL TAB 75mm OUT TO ENSURE EASIER REMOVAL. BED JOINT IN STOARMAT CLASSIC MESH COAT. THE FINISHED JOINT MUST BE COATED FOR NEGATIVE DETAIL or FILLED WITH MS SEALANT. REMOVE TABS AS SOON AS JOINT IS SET TO AVOID CRACKING

SCALE 1:20

STO CONCRETE BLOCK	STO CONCRETE BLOCK VERTICAL CONTROL JOINT	CB 300
		2014

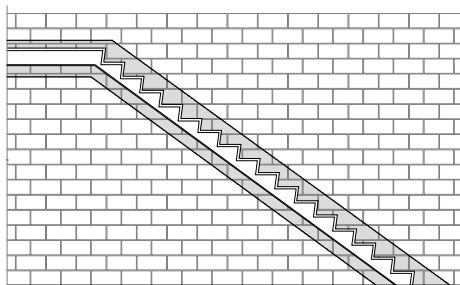
The information contained in this detail is based on our experience and testing and represents the latest information available at the date of issue. This detail is intended for use by the design professional and users of Sto products to assist in developing specific project details to be used in conjunction with a Sto Specification. We reserve the right to alter or update information at any time without prior notice & it is the responsibility of the specifier and/or the project manager to insure that they have the current Sto details and specifications.

STOFLEXYL WATERPROOFING 150mm  
MIN.ABOVE & BELOW STAIRS WITH 50mm  
MIN.UNDER PLASTERED STAIRS or TILE  
MEMBRANE



CONCRETE MASONRY  
WALL (20 Series shown)

INSULATION AS PER  
NZBC - H1

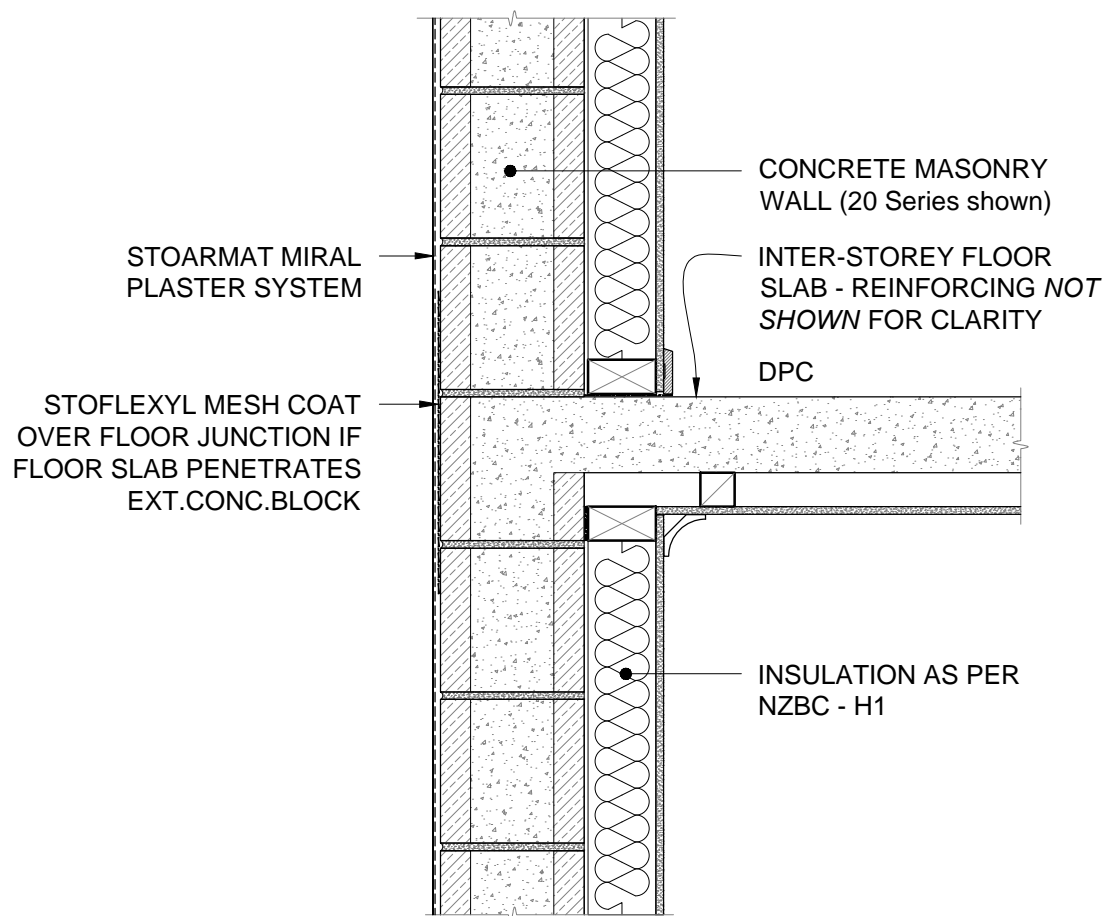


#### STOFLEXYL WATERPROOFING MEMBRANE

- WALL CAPS, PARAPETS, BALUSTRADE TOPS
- JOINERY OPENINGS
- TIMBER OVERLAYS & SOFFITS
- STAIRS
- ADJACENT GARDEN WALLS
- FOUNDATIONS

STO CONCRETE BLOCK	STO CONCRETE BLOCK STAIR WATERPROOFING DETAIL	CB 301
		2014

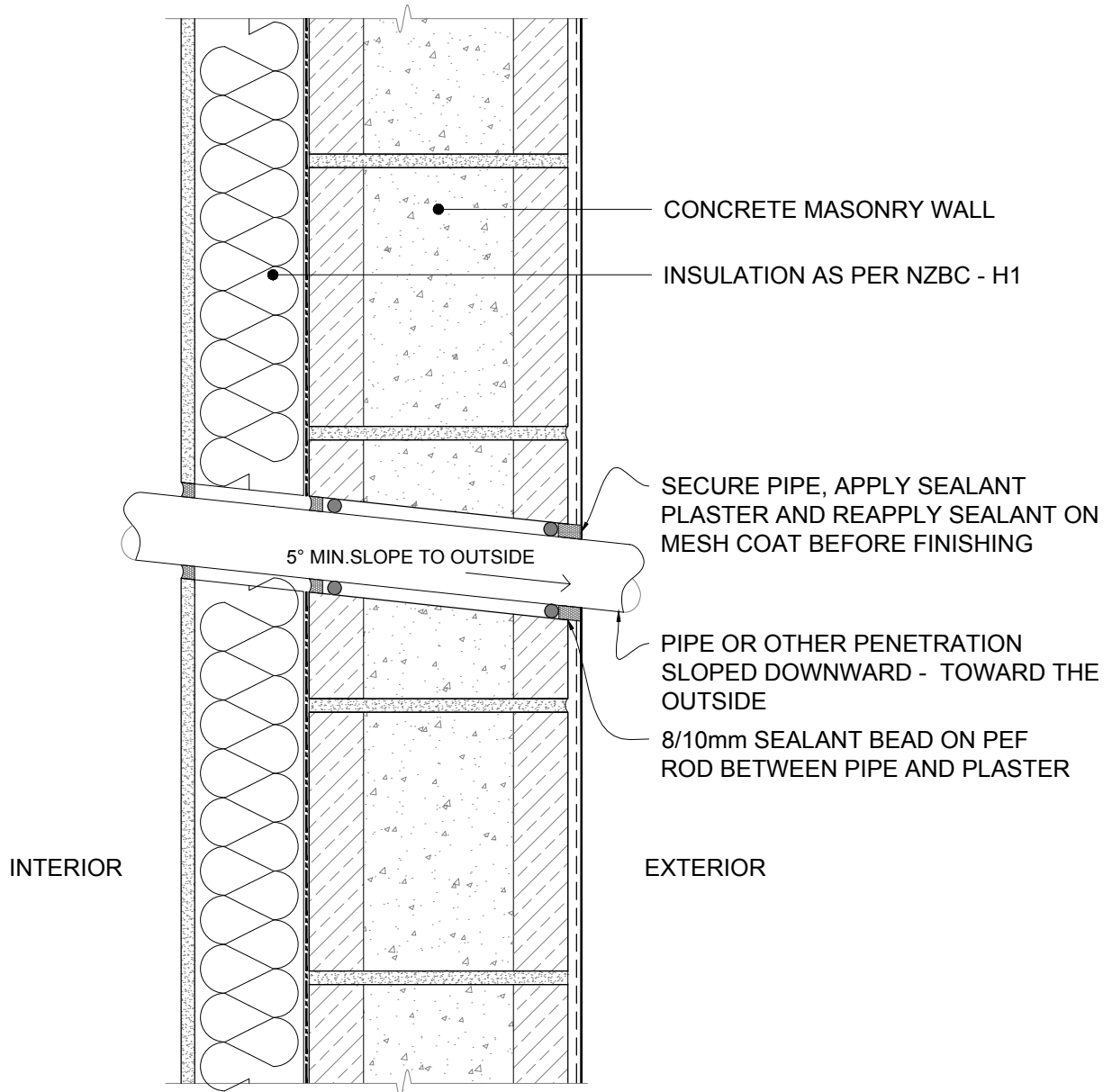
The information contained in this detail is based on our experience and testing and represents the latest information available at the date of issue. This detail is intended for use by the design professional and users of Sto products to assist in developing specific project details to be used in conjunction with a Sto Specification. We reserve the right to alter or update information at any time without prior notice & it is the responsibility of the specifier and/or the project manager to insure that they have the current Sto details and specifications.



SCALE 1:10

STO CONCRETE BLOCK	STO CONCRETE BLOCK INTER-STOREY SLAB DETAIL	CB 302
		2014

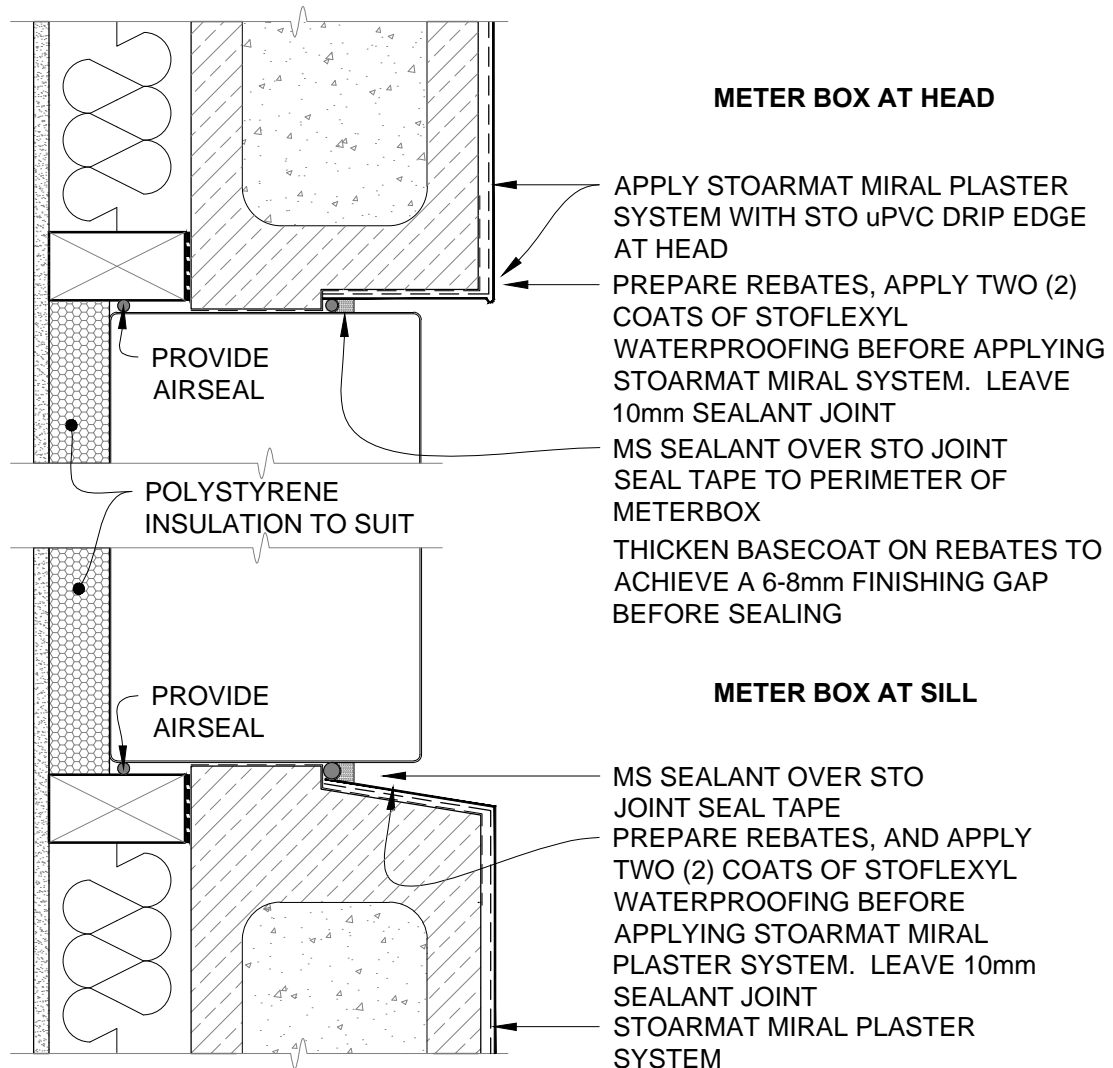
The information contained in this detail is based on our experience and testing and represents the latest information available at the date of issue. This detail is intended for use by the design professional and users of Sto products to assist in developing specific project details to be used in conjunction with a Sto Specification. We reserve the right to alter or update information at any time without prior notice & it is the responsibility of the specifier and/or the project manager to insure that they have the current Sto details and specifications.



SCALE 1:5

STO CONCRETE BLOCK	STO CONCRETE BLOCK PIPE PENETRATION DETAIL (up to 150mm)	CB 350
		2014

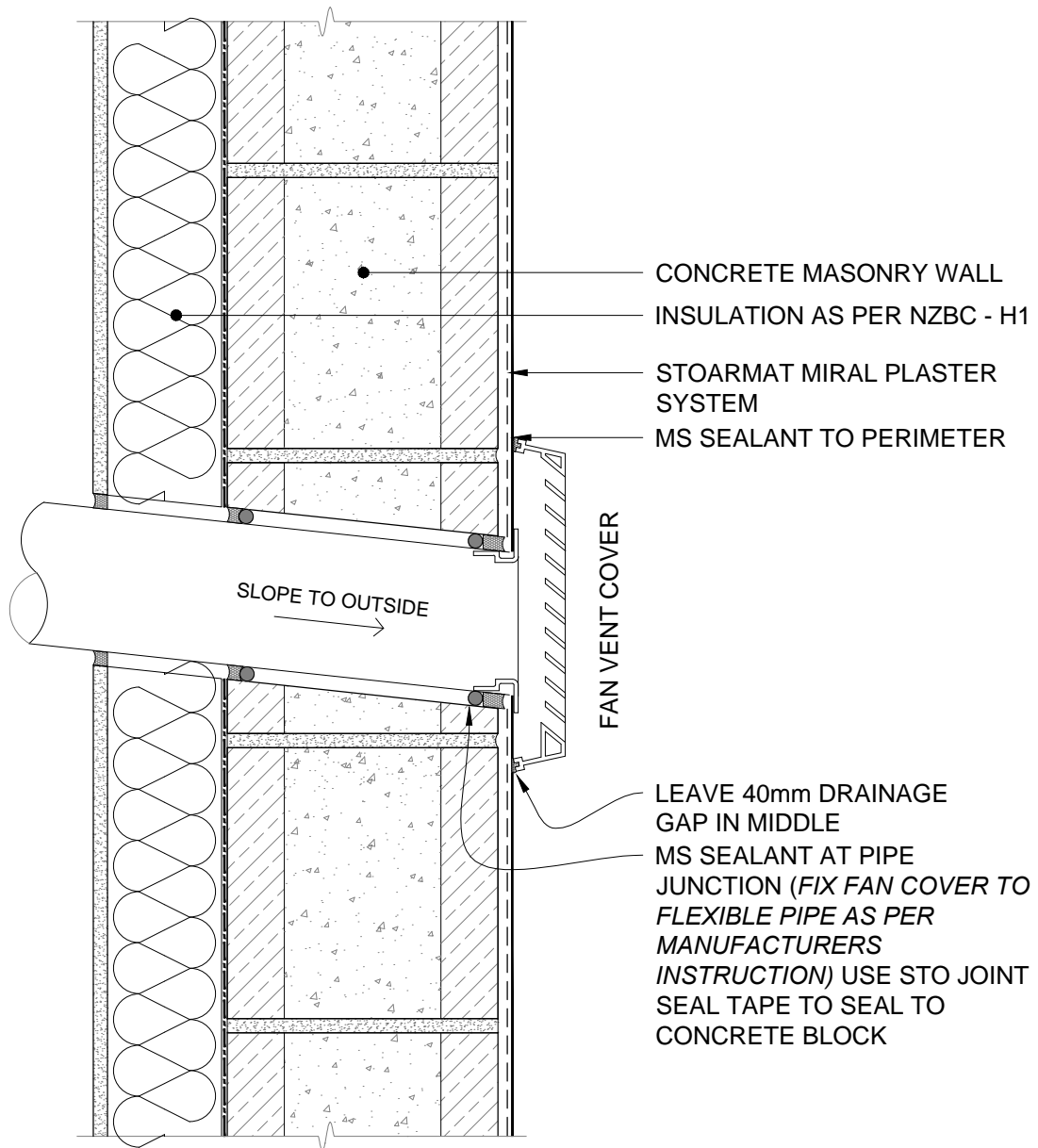
The information contained in this detail is based on our experience and testing and represents the latest information available at the date of issue. This detail is intended for use by the design professional and users of Sto products to assist in developing specific project details to be used in conjunction with a Sto Specification. We reserve the right to alter or update information at any time without prior notice & it is the responsibility of the specifier and/or the project manager to insure that they have the current Sto details and specifications.



SCALE 1:5

STO CONCRETE BLOCK	STO CONCRETE BLOCK METER BOX	CB 351
		2014

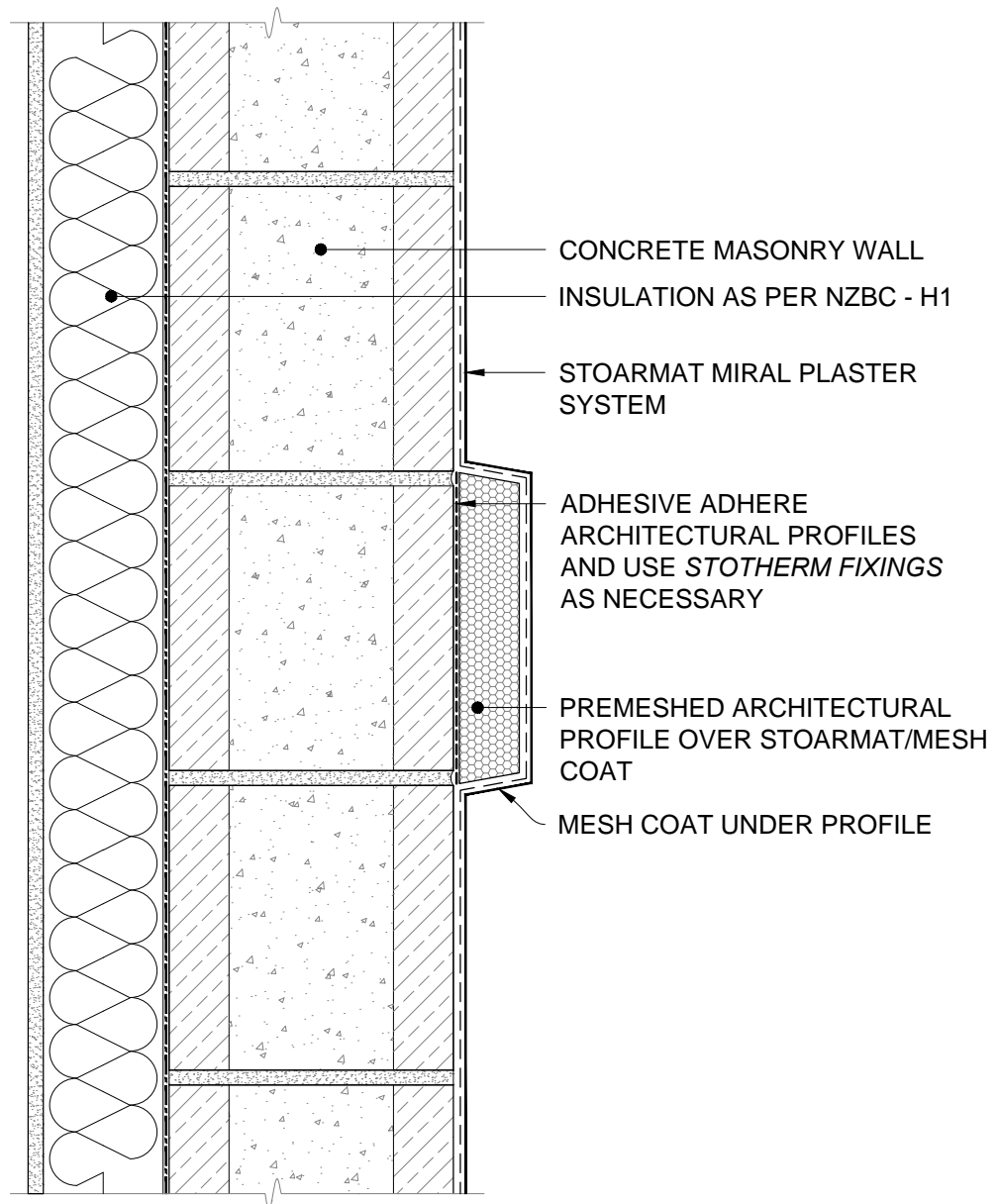
The information contained in this detail is based on our experience and testing and represents the latest information available at the date of issue. This detail is intended for use by the design professional and users of Sto products to assist in developing specific project details to be used in conjunction with a Sto Specification. We reserve the right to alter or update information at any time without prior notice & it is the responsibility of the specifier and/or the project manager to insure that they have the current Sto details and specifications.



SCALE 1:5

STO CONCRETE BLOCK	STO CONCRETE BLOCK FAN VENT DETAIL	CB 352
		2014

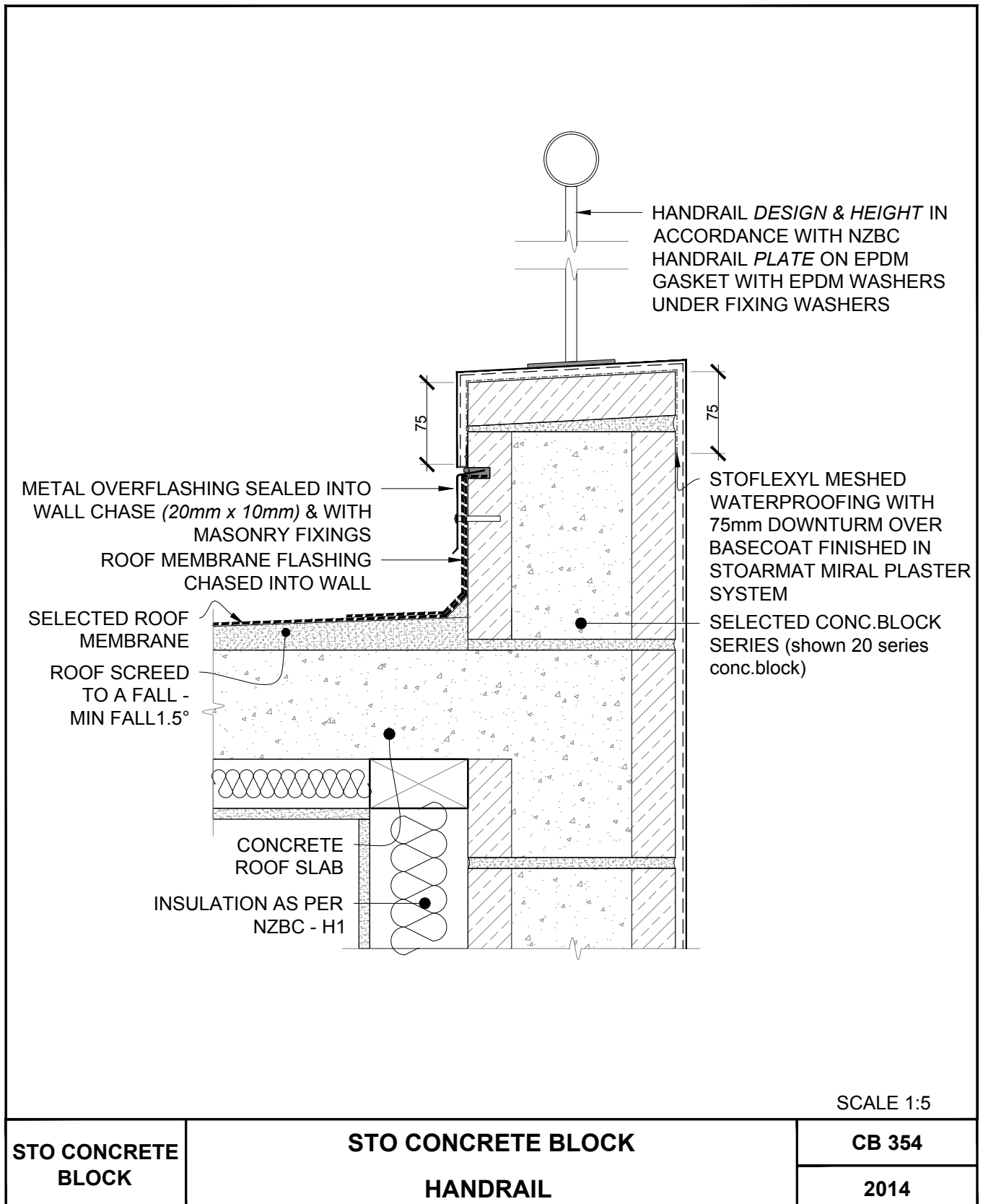
The information contained in this detail is based on our experience and testing and represents the latest information available at the date of issue. This detail is intended for use by the design professional and users of Sto products to assist in developing specific project details to be used in conjunction with a Sto Specification. We reserve the right to alter or update information at any time without prior notice & it is the responsibility of the specifier and/or the project manager to insure that they have the current Sto details and specifications.



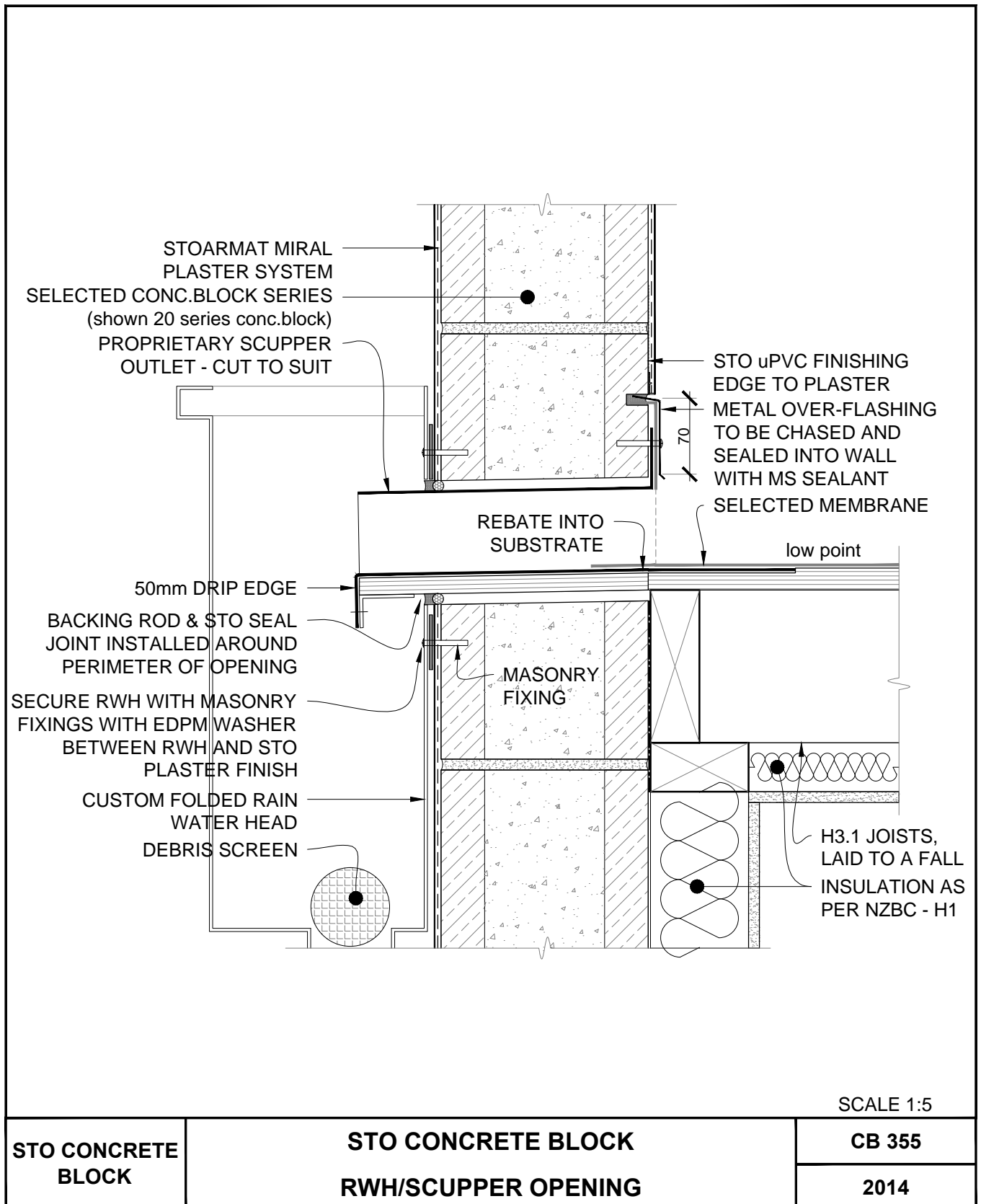
SCALE 1:5

STO CONCRETE BLOCK	STO CONCRETE BLOCK ARCHITECURAL PROFILE	CB 353
		2014

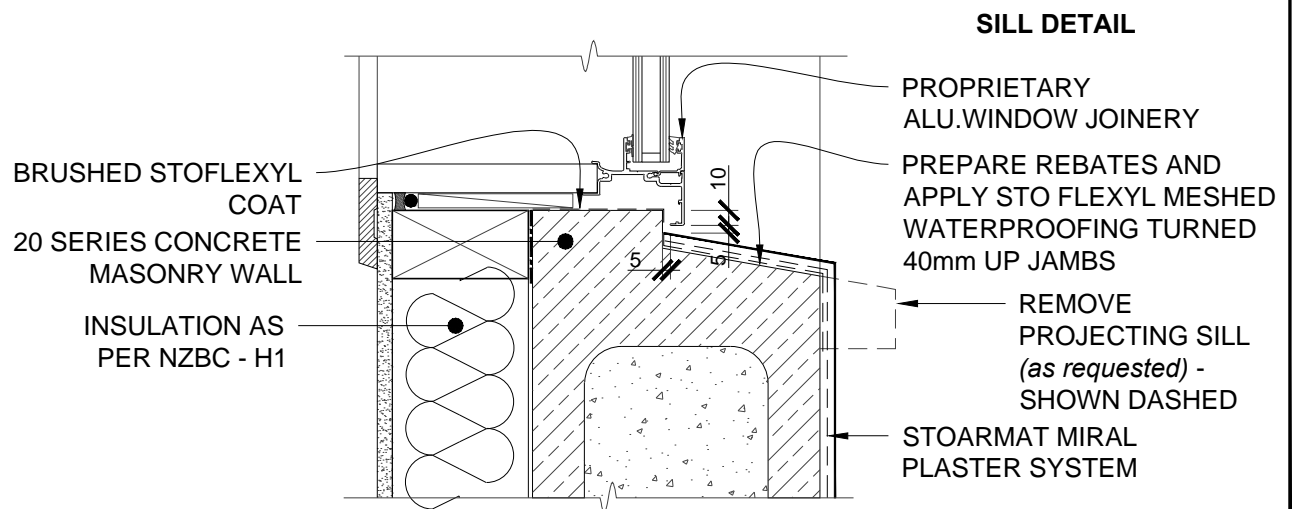
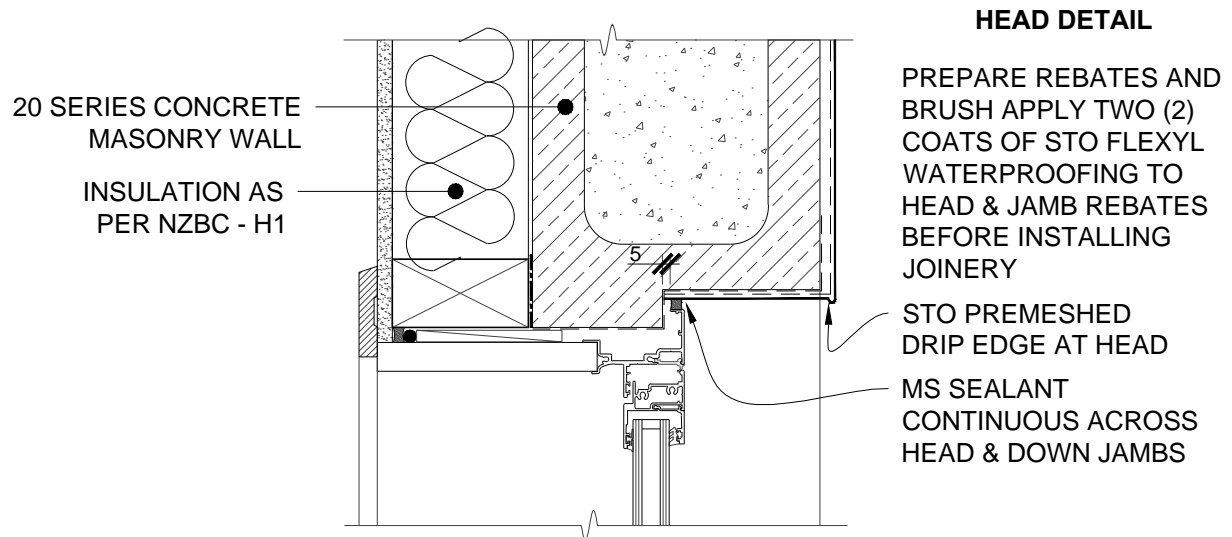
The information contained in this detail is based on our experience and testing and represents the latest information available at the date of issue. This detail is intended for use by the design professional and users of Sto products to assist in developing specific project details to be used in conjunction with a Sto Specification. We reserve the right to alter or update information at any time without prior notice & it is the responsibility of the specifier and/or the project manager to insure that they have the current Sto details and specifications.



The information contained in this detail is based on our experience and testing and represents the latest information available at the date of issue. This detail is intended for use by the design professional and users of Sto products to assist in developing specific project details to be used in conjunction with a Sto Specification. We reserve the right to alter or update information at any time without prior notice & it is the responsibility of the specifier and/or the project manager to insure that they have the current Sto details and specifications.



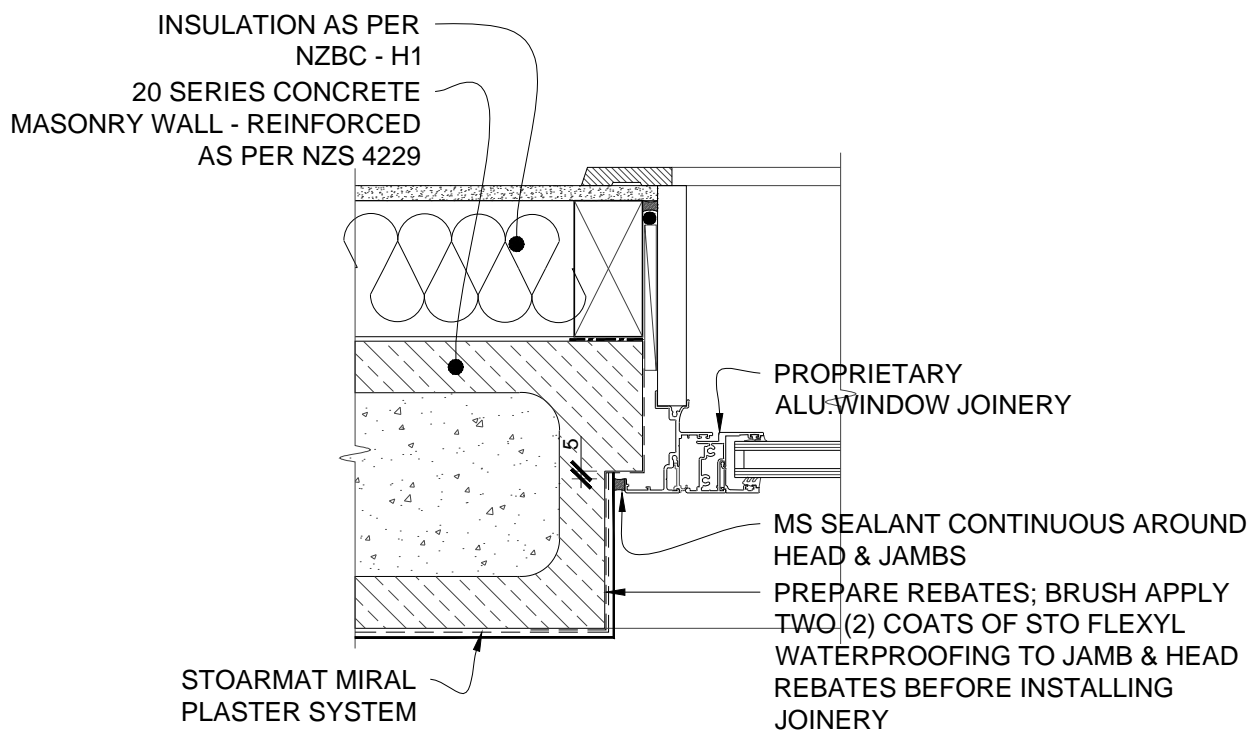
The information contained in this detail is based on our experience and testing and represents the latest information available at the date of issue. This detail is intended for use by the design professional and users of Sto products to assist in developing specific project details to be used in conjunction with a Sto Specification. We reserve the right to alter or update information at any time without prior notice & it is the responsibility of the specifier and/or the project manager to insure that they have the current Sto details and specifications.



SCALE 1:5

STO CONCRETE BLOCK	STO CONCRETE BLOCK ALUMINIUM JOINERY - HEAD & SILL DETAIL	CB 400 2014
--------------------	--	----------------

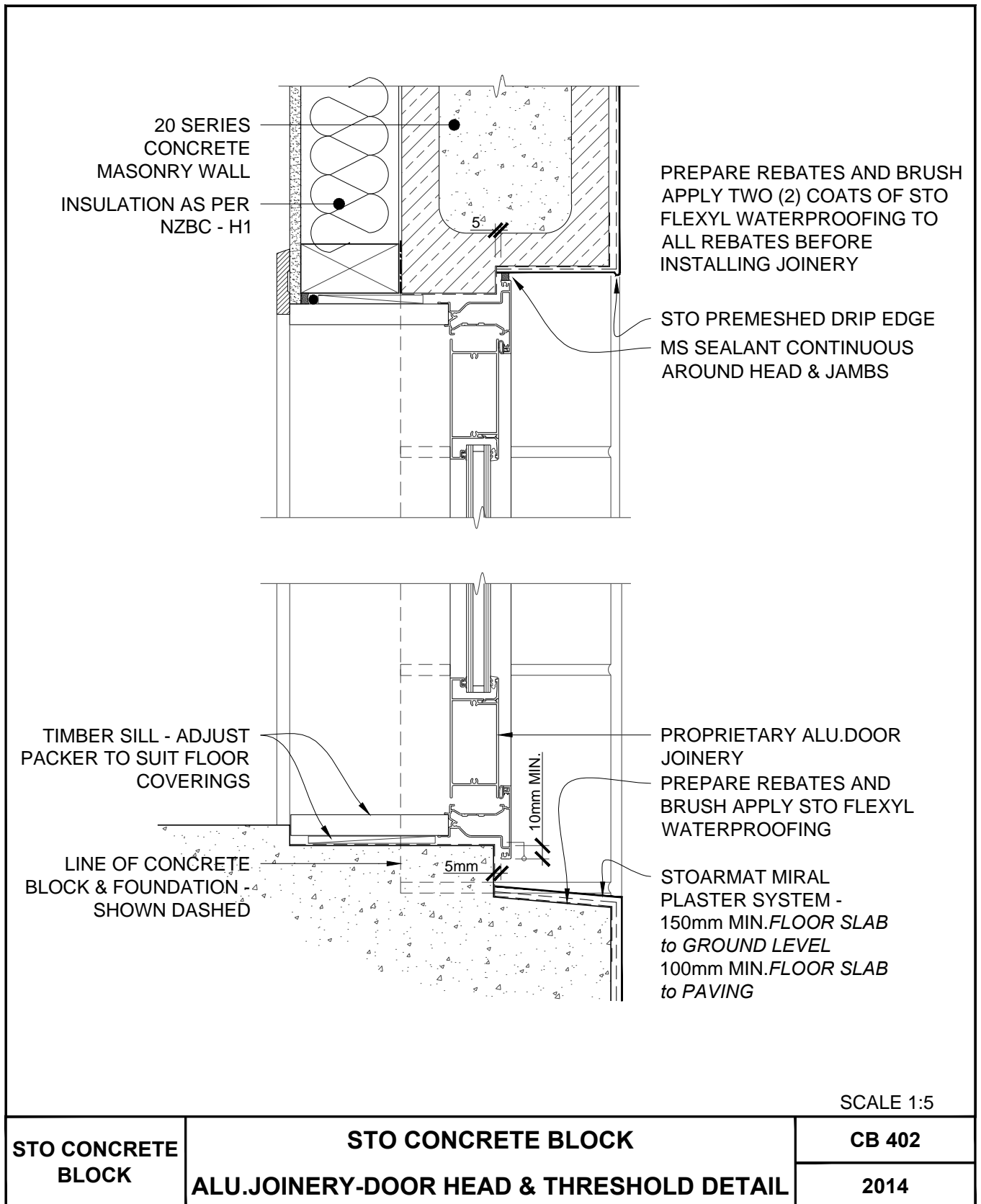
The information contained in this detail is based on our experience and testing and represents the latest information available at the date of issue. This detail is intended for use by the design professional and users of Sto products to assist in developing specific project details to be used in conjunction with a Sto Specification. We reserve the right to alter or update information at any time without prior notice & it is the responsibility of the specifier and/or the project manager to insure that they have the current Sto details and specifications.



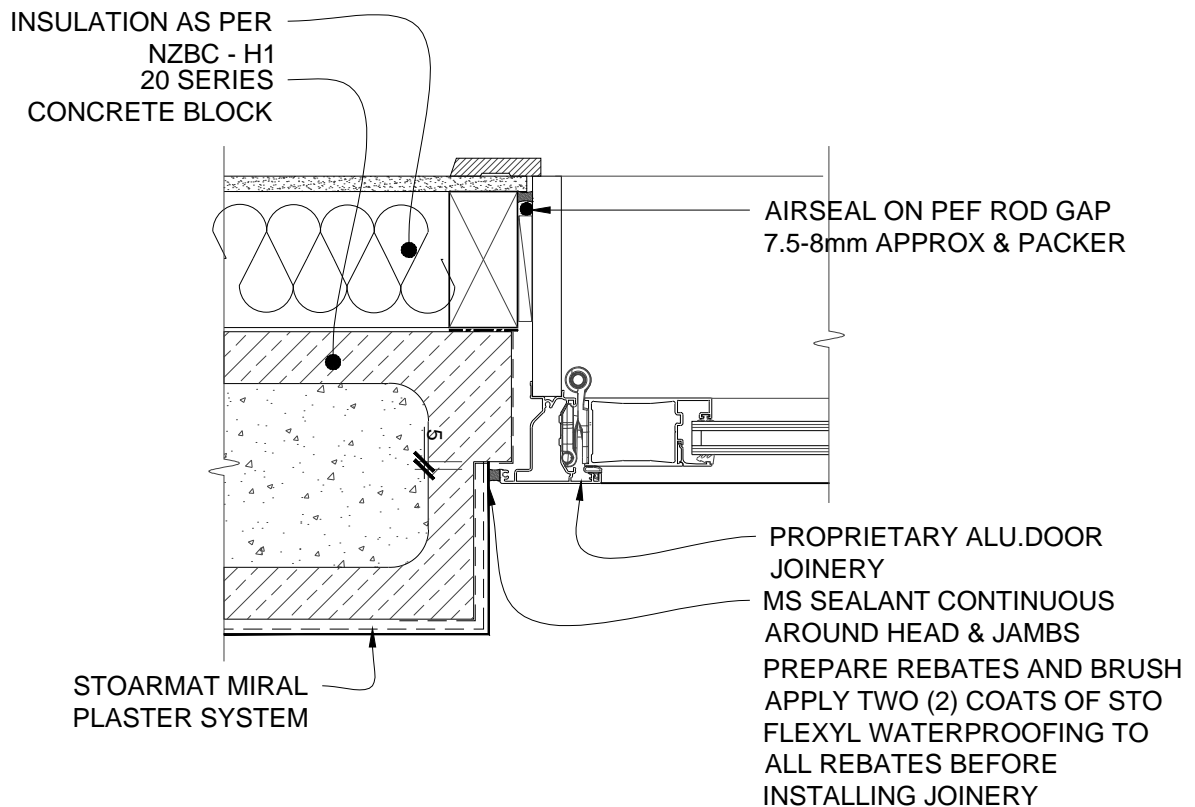
SCALE 1:5

STO CONCRETE BLOCK	STO CONCRETE BLOCK  ALUMINIUM JOINERY - JAMB DETAIL	CB 401
		2014

The information contained in this detail is based on our experience and testing and represents the latest information available at the date of issue. This detail is intended for use by the design professional and users of Sto products to assist in developing specific project details to be used in conjunction with a Sto Specification. We reserve the right to alter or update information at any time without prior notice & it is the responsibility of the specifier and/or the project manager to insure that they have the current Sto details and specifications.



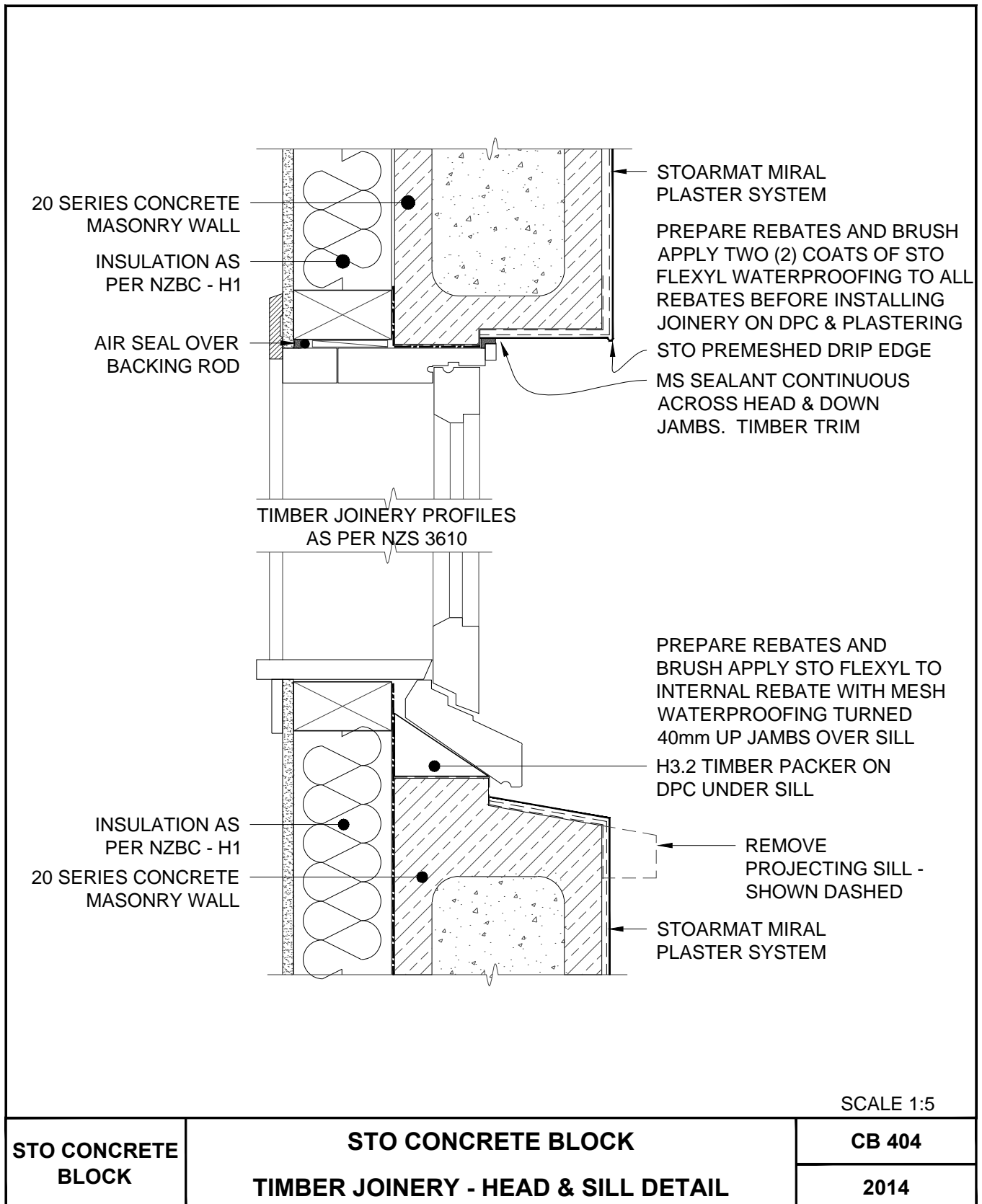
The information contained in this detail is based on our experience and testing and represents the latest information available at the date of issue. This detail is intended for use by the design professional and users of Sto products to assist in developing specific project details to be used in conjunction with a Sto Specification. We reserve the right to alter or update information at any time without prior notice & it is the responsibility of the specifier and/or the project manager to insure that they have the current Sto details and specifications.



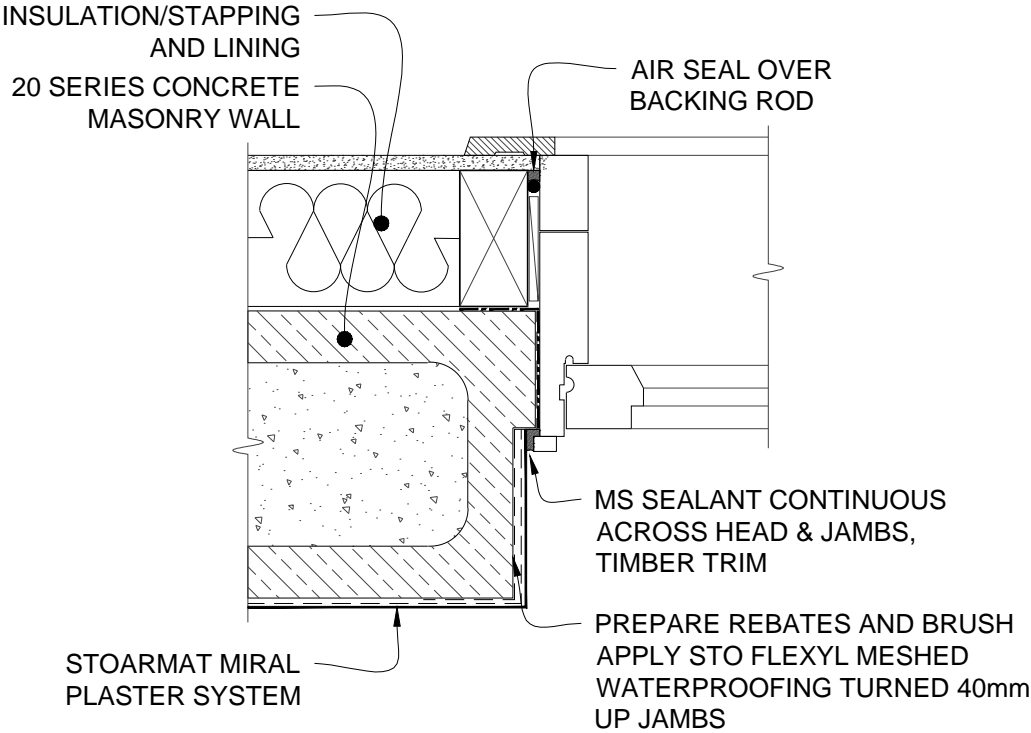
SCALE 1:5

STO CONCRETE BLOCK	STO CONCRETE BLOCK  ALUMINIUM JOINERY - JAMB DETAIL	CB 403
		2014

The information contained in this detail is based on our experience and testing and represents the latest information available at the date of issue. This detail is intended for use by the design professional and users of Sto products to assist in developing specific project details to be used in conjunction with a Sto Specification. We reserve the right to alter or update information at any time without prior notice & it is the responsibility of the specifier and/or the project manager to insure that they have the current Sto details and specifications.



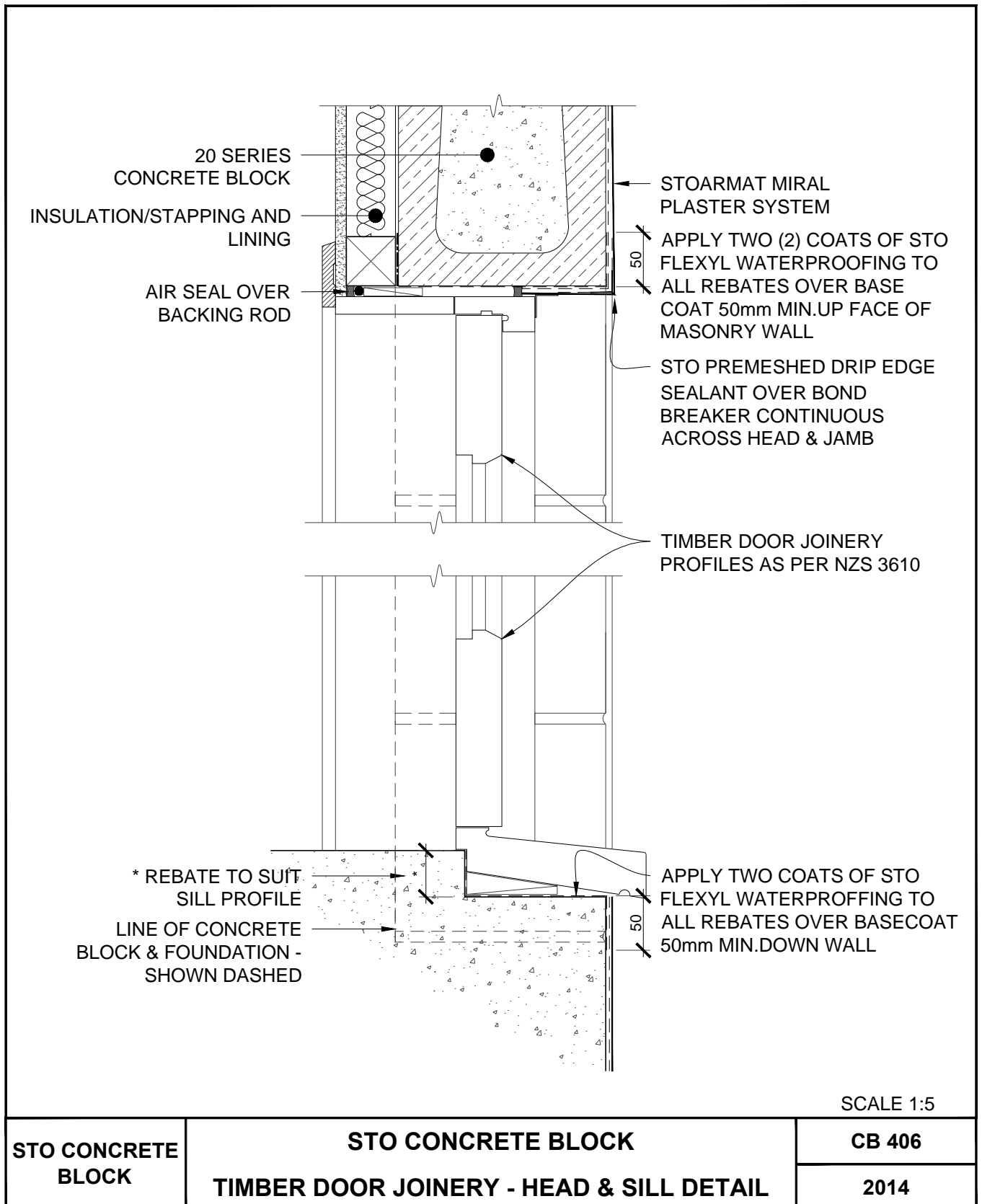
The information contained in this detail is based on our experience and testing and represents the latest information available at the date of issue. This detail is intended for use by the design professional and users of Sto products to assist in developing specific project details to be used in conjunction with a Sto Specification. We reserve the right to alter or update information at any time without prior notice & it is the responsibility of the specifier and/or the project manager to insure that they have the current Sto details and specifications.



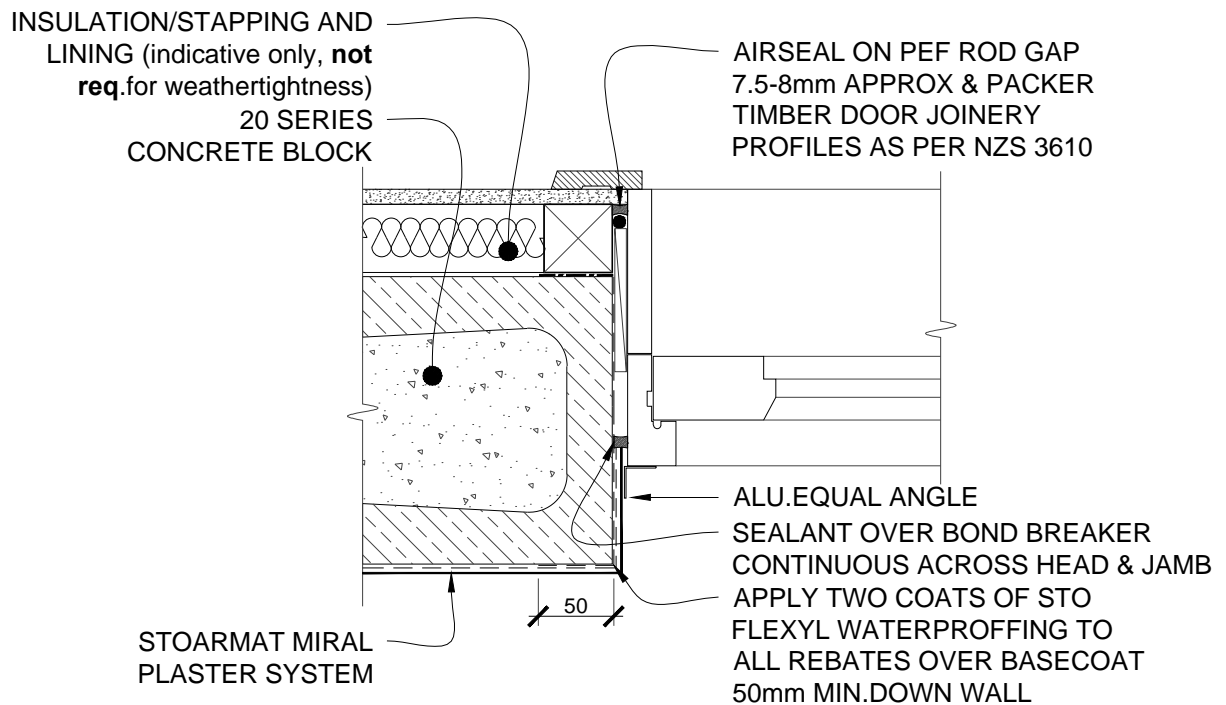
SCALE 1:5

STO CONCRETE BLOCK	STO CONCRETE BLOCK  TIMBER JOINERY - JAMB DETAIL	CB 405
		2014

The information contained in this detail is based on our experience and testing and represents the latest information available at the date of issue. This detail is intended for use by the design professional and users of Sto products to assist in developing specific project details to be used in conjunction with a Sto Specification. We reserve the right to alter or update information at any time without prior notice & it is the responsibility of the specifier and/or the project manager to insure that they have the current Sto details and specifications.



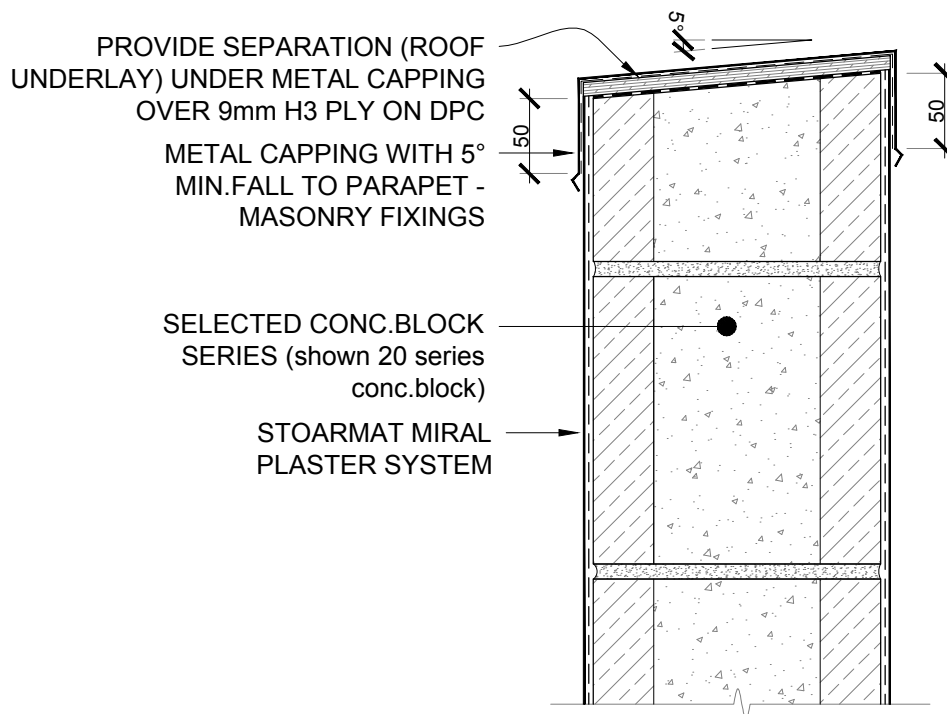
The information contained in this detail is based on our experience and testing and represents the latest information available at the date of issue. This detail is intended for use by the design professional and users of Sto products to assist in developing specific project details to be used in conjunction with a Sto Specification. We reserve the right to alter or update information at any time without prior notice & it is the responsibility of the specifier and/or the project manager to insure that they have the current Sto details and specifications.



SCALE 1:5

STO CONCRETE BLOCK	STO CONCRETE BLOCK TIMBER DOOR JOINERY - JAMB DETAIL	CB 407
		2014

The information contained in this detail is based on our experience and testing and represents the latest information available at the date of issue. This detail is intended for use by the design professional and users of Sto products to assist in developing specific project details to be used in conjunction with a Sto Specification. We reserve the right to alter or update information at any time without prior notice & it is the responsibility of the specifier and/or the project manager to insure that they have the current Sto details and specifications.

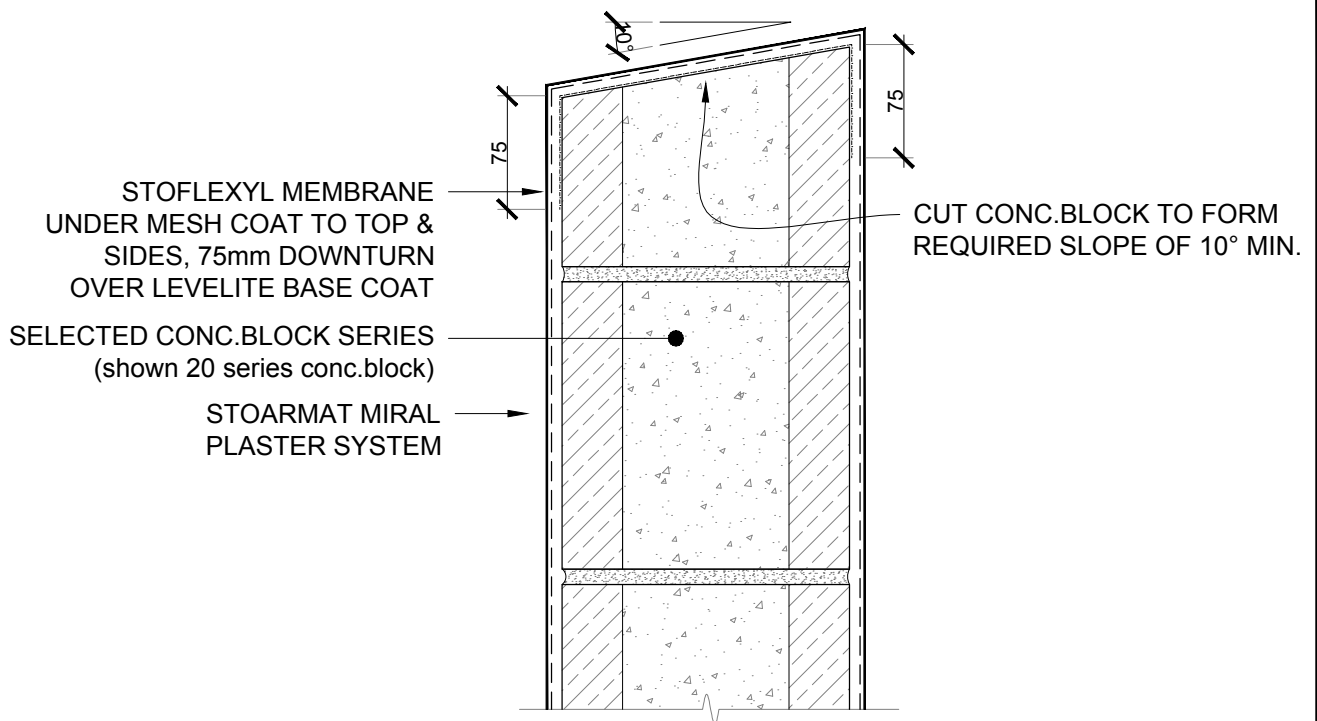


**NOTE:** CUT BLOCK TO SUIT OR BASECOAT PLASTER TO A FALL APPROX.18mm FROM FRONT EDGE BEFORE INSTALLING PLYWOOD ON DPC. ALTERNATIVELY USE H3.1 TIMBER PLATE, MAINTAINING FLASHING COVER OVER CONC.BLOCK OF 50mm MIN.

SCALE 1:5

STO CONCRETE BLOCK	STO CONCRETE BLOCK PARAPET/METAL FLASHING DETAIL	CB 500
		2014

The information contained in this detail is based on our experience and testing and represents the latest information available at the date of issue. This detail is intended for use by the design professional and users of Sto products to assist in developing specific project details to be used in conjunction with a Sto Specification. We reserve the right to alter or update information at any time without prior notice & it is the responsibility of the specifier and/or the project manager to insure that they have the current Sto details and specifications.

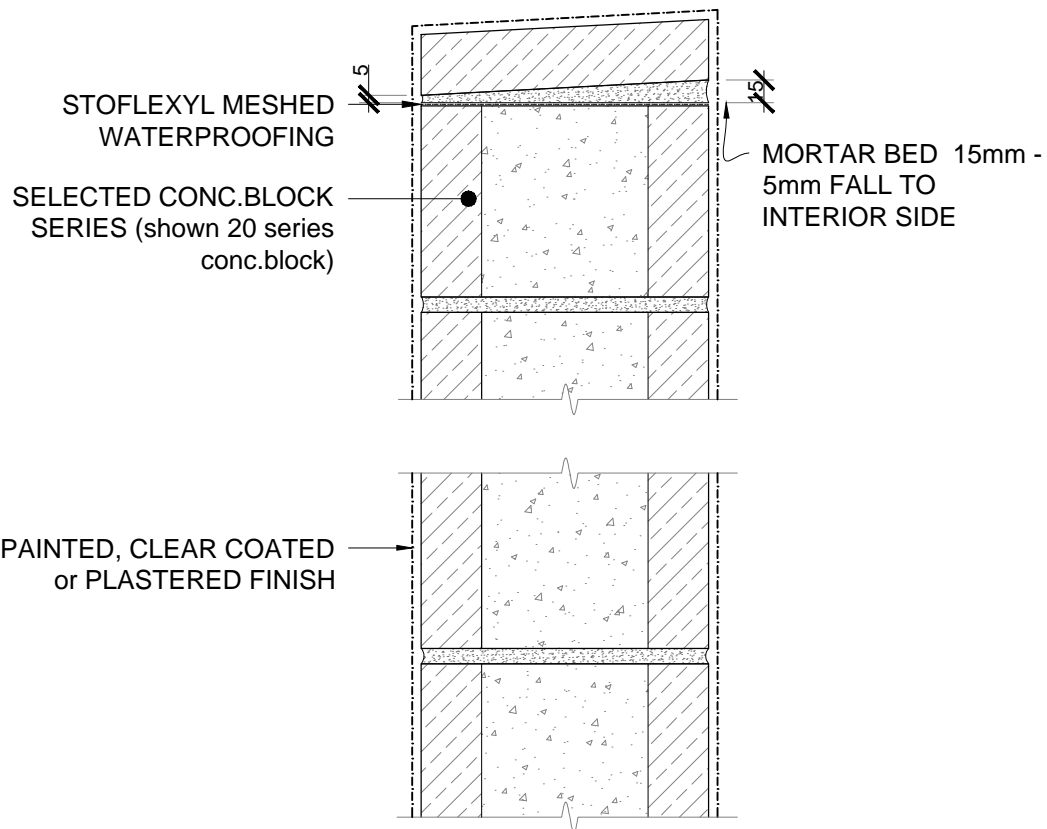


**NOTE:** CUT BLOCKS TO SUIT or BASECOAT PLASTER TO  
A FALL 10° MIN.FOR STOCLEAR COATING SYSTEM -  
REFER TO DRAWING DETAIL CB 502

SCALE 1:5

STO CONCRETE BLOCK	STO CONCRETE BLOCK PLASTERED PARAPET/BALUSTRADE DETAIL	CB 501
		2014

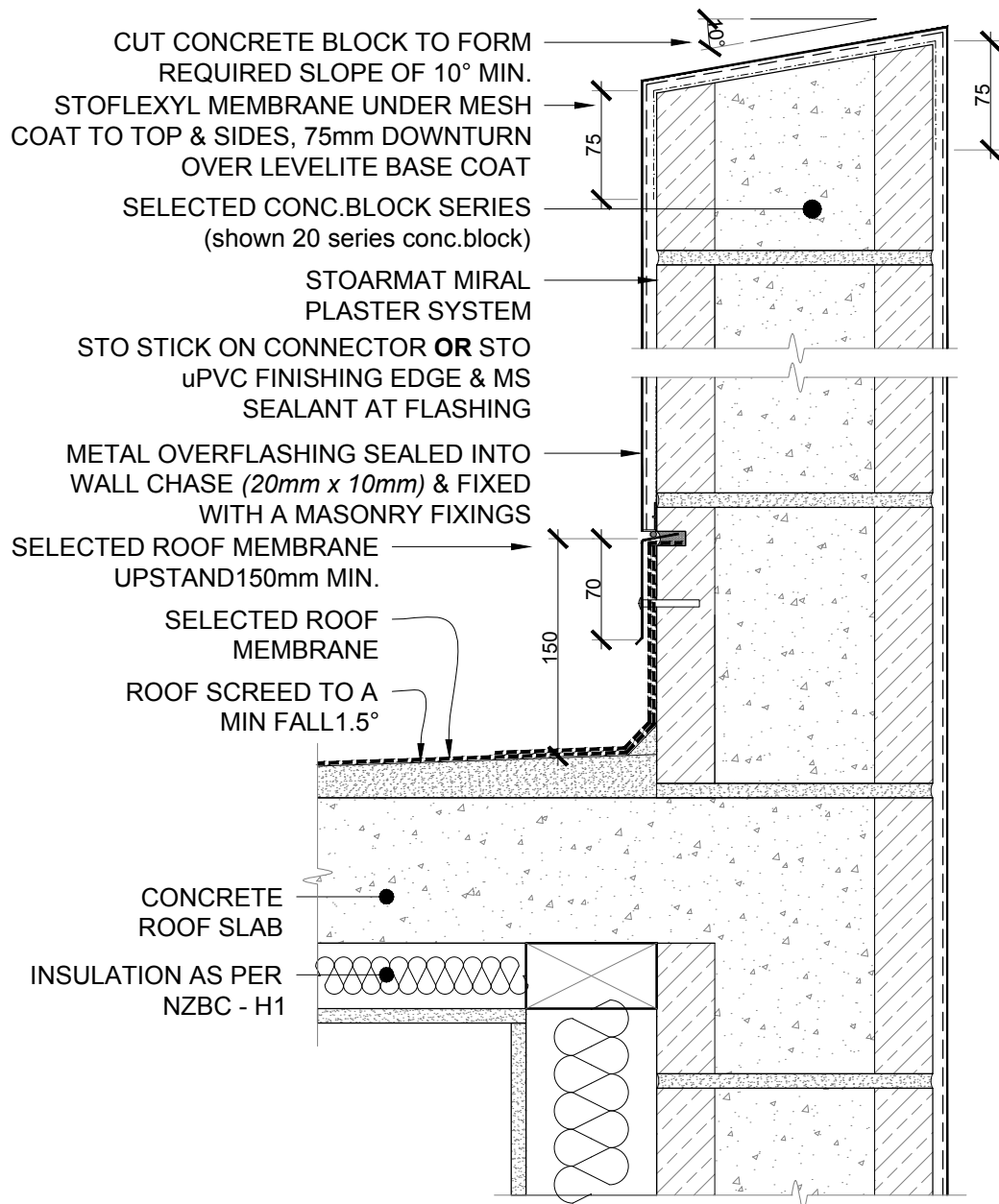
The information contained in this detail is based on our experience and testing and represents the latest information available at the date of issue. This detail is intended for use by the design professional and users of Sto products to assist in developing specific project details to be used in conjunction with a Sto Specification. We reserve the right to alter or update information at any time without prior notice & it is the responsibility of the specifier and/or the project manager to insure that they have the current Sto details and specifications.



SCALE 1:5

<b>STO CONCRETE BLOCK</b>	<b>STO CONCRETE BLOCK</b> <b>UNCOATED,PAINTED CLEAR COATED or PLASTERED</b>	<b>CB 502</b>
		<b>2014</b>

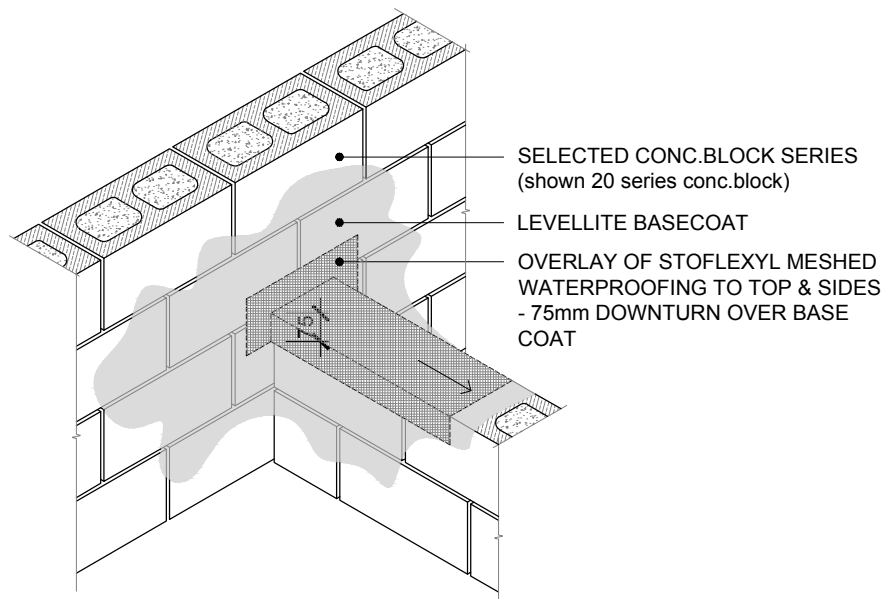
The information contained in this detail is based on our experience and testing and represents the latest information available at the date of issue. This detail is intended for use by the design professional and users of Sto products to assist in developing specific project details to be used in conjunction with a Sto Specification. We reserve the right to alter or update information at any time without prior notice & it is the responsibility of the specifier and/or the project manager to insure that they have the current Sto details and specifications.



SCALE 1:5

STO CONCRETE BLOCK	STO CONCRETE BLOCK PARAPET/ROOF/WALL DETAIL	CB 503
		2014

The information contained in this detail is based on our experience and testing and represents the latest information available at the date of issue. This detail is intended for use by the design professional and users of Sto products to assist in developing specific project details to be used in conjunction with a Sto Specification. We reserve the right to alter or update information at any time without prior notice & it is the responsibility of the specifier and/or the project manager to insure that they have the current Sto details and specifications.



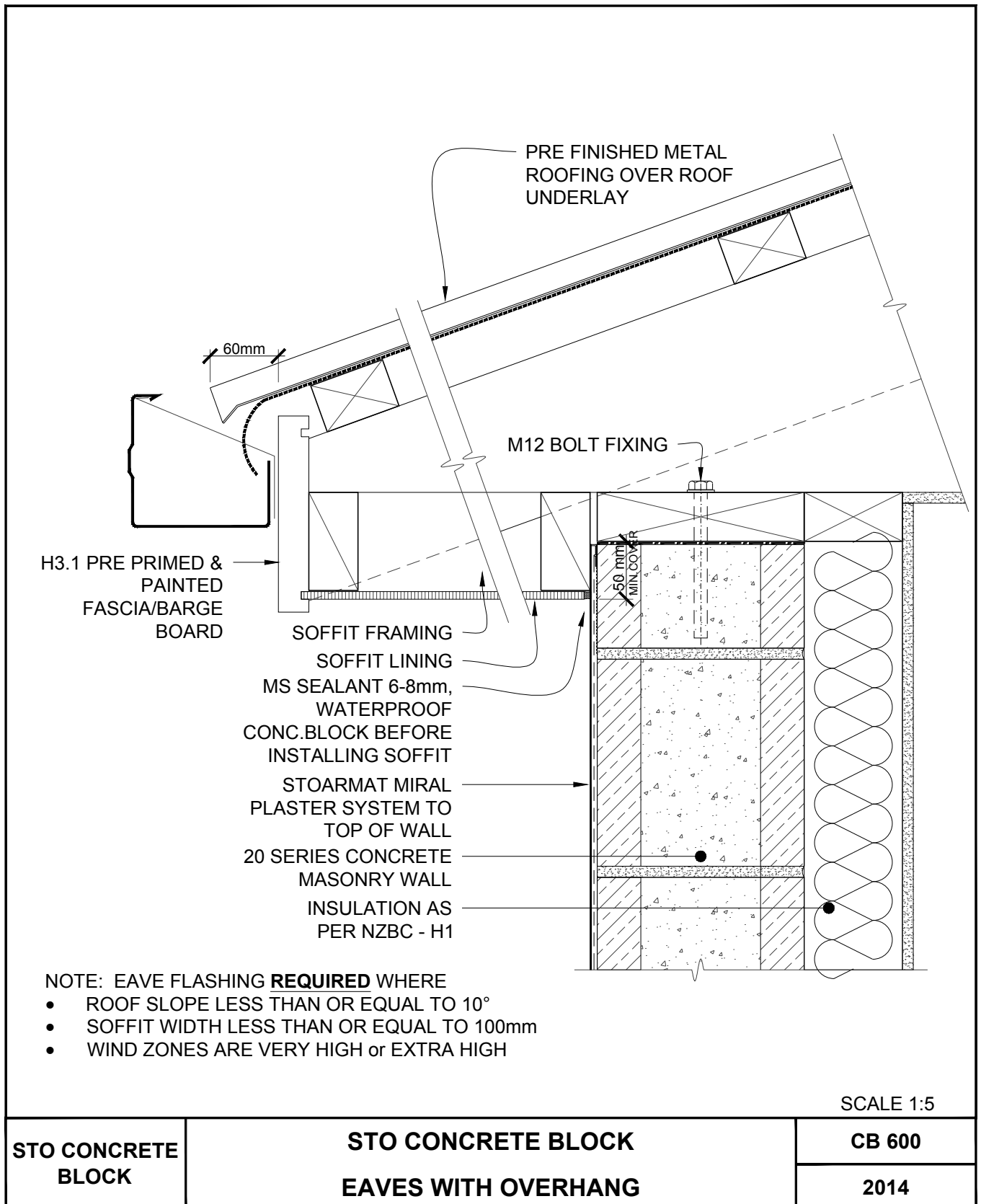
**NOTE:**

1. ALL ADJACENT WALLS ARE TO BE STRUCTURALLY TIED WITH STEEL REINFORCEMENT.
2. BALUSTRADES TO HAVE 10° MIN.FALL TO TOP
3. ALL BALUSTRADES/PARAPETS & WALL CAPS TO HAVE STOFLEXYL MESHED WATERPROOFING
4. STO FLEXYL MESHED WATERPROOFING MEMBRANE HAS BEEN TESTED BY BRANZ TO AS/NZS4858 - AS REQUIRED BY E2/AS1 & CCANZ CP01:2014

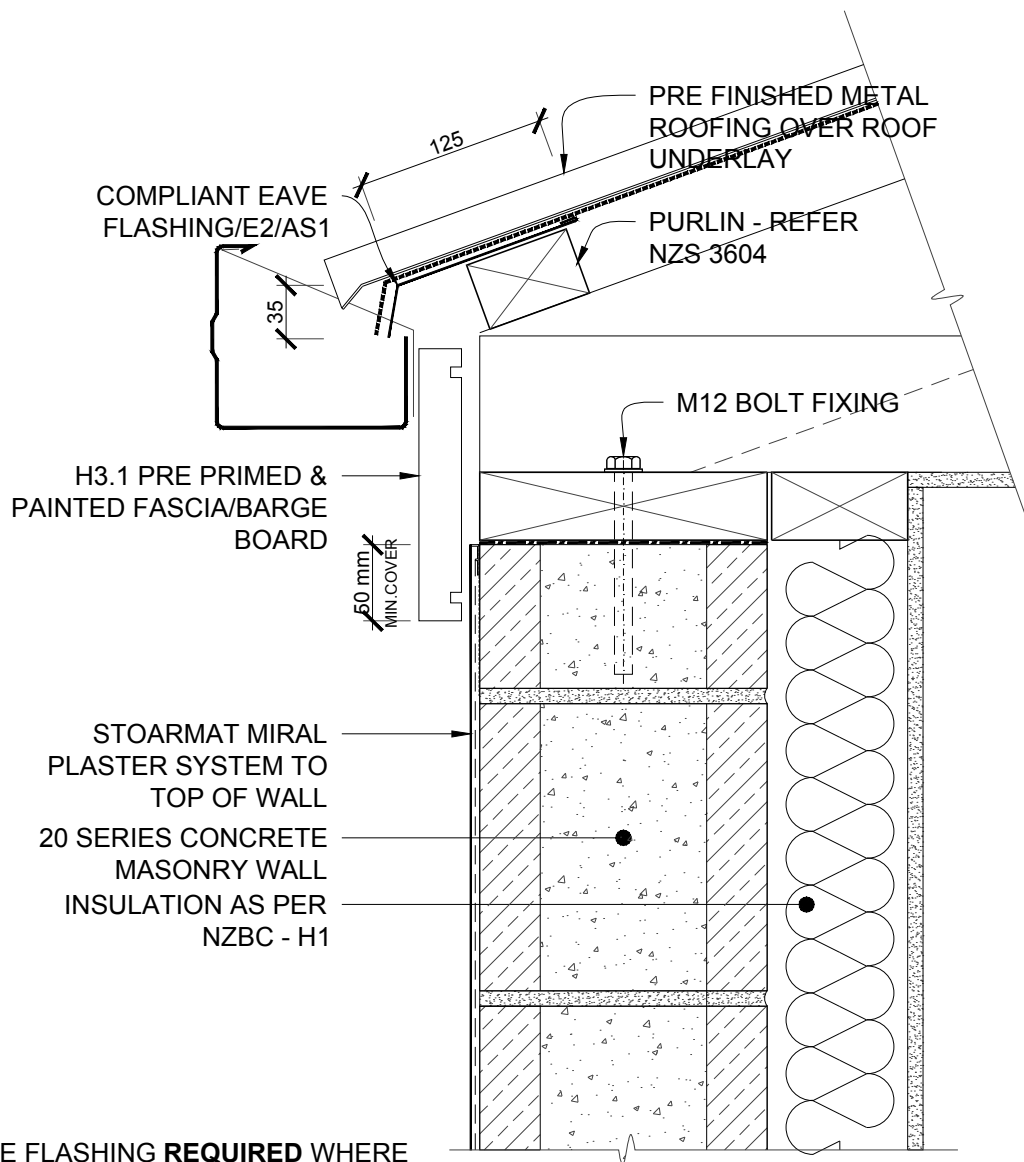
SCALE 1:20

<b>STO CONCRETE BLOCK</b>	<b>STO CONCRETE BLOCK</b>  <b>STOFLEXYL WATERPROOFING MEMBRANE</b>	<b>CB 504</b>
		<b>2014</b>

The information contained in this detail is based on our experience and testing and represents the latest information available at the date of issue. This detail is intended for use by the design professional and users of Sto products to assist in developing specific project details to be used in conjunction with a Sto Specification. We reserve the right to alter or update information at any time without prior notice & it is the responsibility of the specifier and/or the project manager to insure that they have the current Sto details and specifications.



The information contained in this detail is based on our experience and testing and represents the latest information available at the date of issue. This detail is intended for use by the design professional and users of Sto products to assist in developing specific project details to be used in conjunction with a Sto Specification. We reserve the right to alter or update information at any time without prior notice & it is the responsibility of the specifier and/or the project manager to insure that they have the current Sto details and specifications.



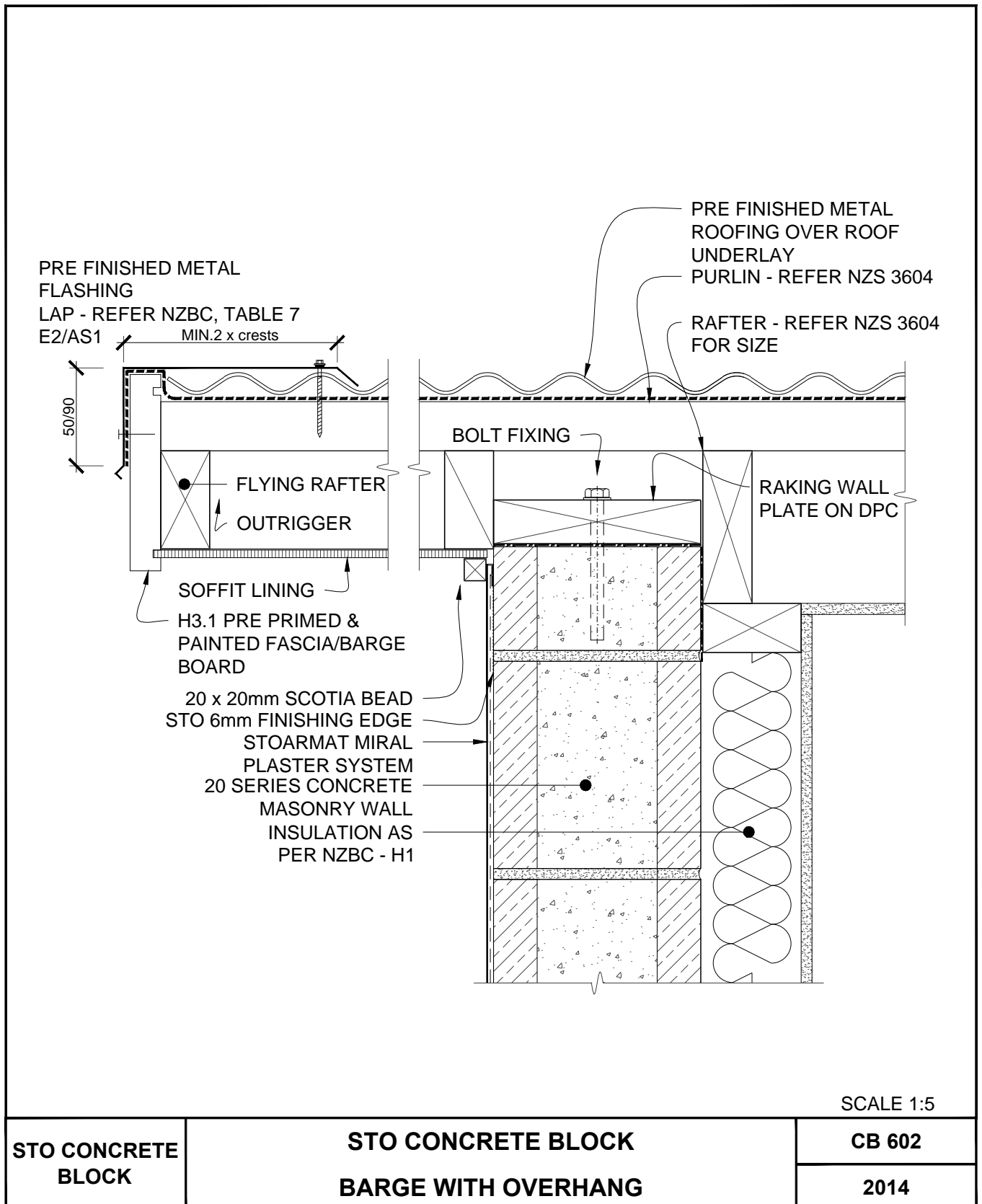
NOTE: EAVE FLASHING **REQUIRED** WHERE

- ROOF SLOPE LESS THAN OR EQUAL TO 10°
- SOFFIT WIDTH LESS THAN OR EQUAL TO 100mm
- WIND ZONES ARE VERY HIGH or EXTRA HIGH, MS SEALANT REQUIRED

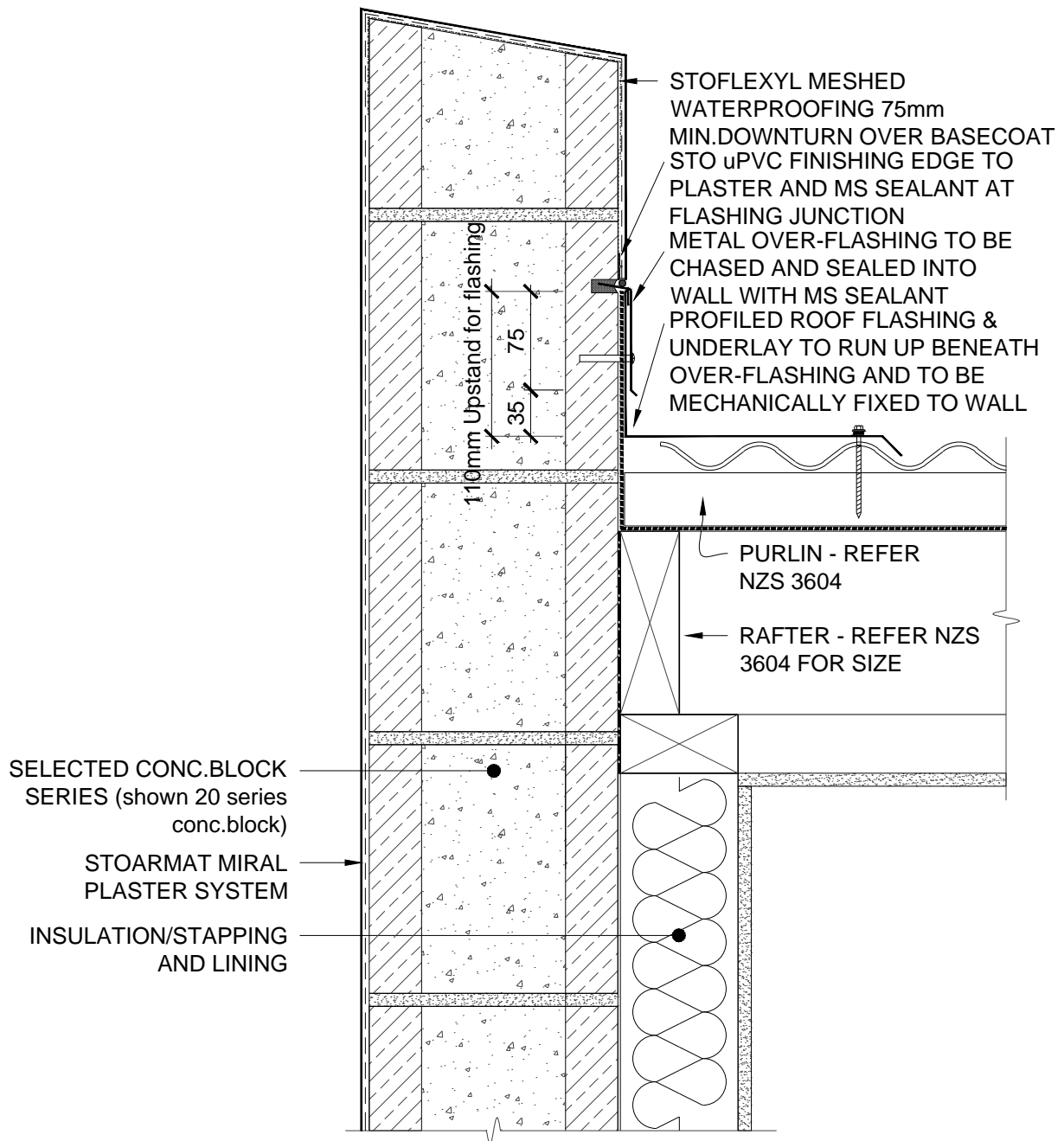
SCALE 1:5

STO CONCRETE BLOCK	STO CONCRETE BLOCK EAVES WITH NO OVERHANG	CB 601
		2014

The information contained in this detail is based on our experience and testing and represents the latest information available at the date of issue. This detail is intended for use by the design professional and users of Sto products to assist in developing specific project details to be used in conjunction with a Sto Specification. We reserve the right to alter or update information at any time without prior notice & it is the responsibility of the specifier and/or the project manager to insure that they have the current Sto details and specifications.



The information contained in this detail is based on our experience and testing and represents the latest information available at the date of issue. This detail is intended for use by the design professional and users of Sto products to assist in developing specific project details to be used in conjunction with a Sto Specification. We reserve the right to alter or update information at any time without prior notice & it is the responsibility of the specifier and/or the project manager to insure that they have the current Sto details and specifications.



SCALE 1:5

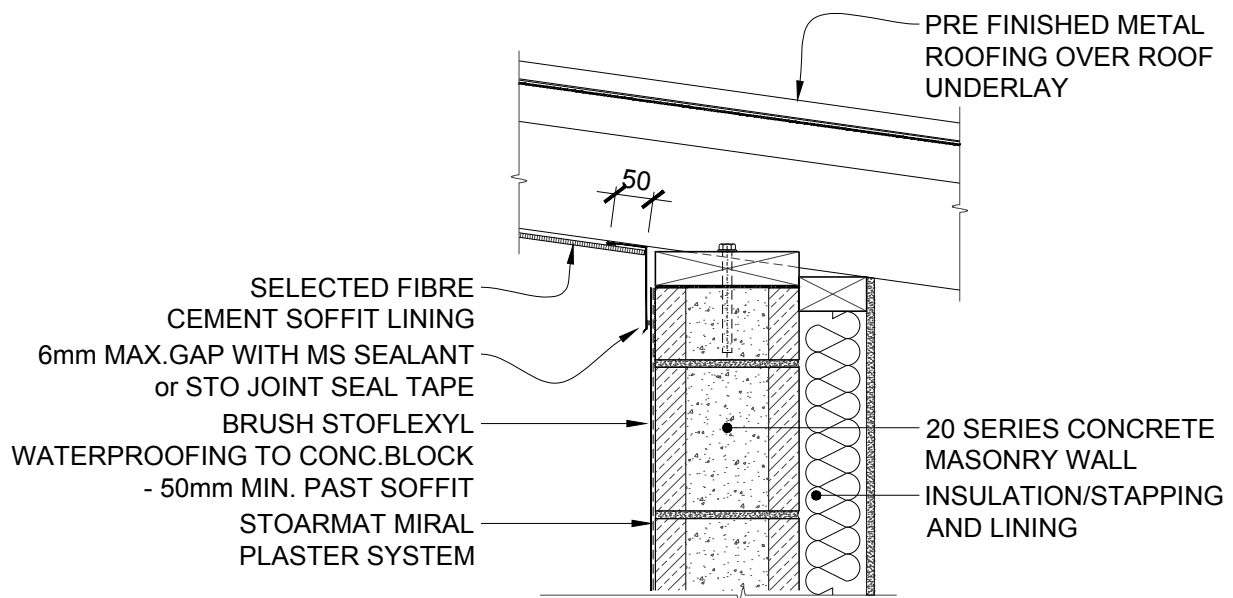
**STO CONCRETE BLOCK**

**STO CONCRETE BLOCK  
ROOF TO CONC.BLOCK GABLE END**

**CB 603**

**2014**

The information contained in this detail is based on our experience and testing and represents the latest information available at the date of issue. This detail is intended for use by the design professional and users of Sto products to assist in developing specific project details to be used in conjunction with a Sto Specification. We reserve the right to alter or update information at any time without prior notice & it is the responsibility of the specifier and/or the project manager to insure that they have the current Sto details and specifications.



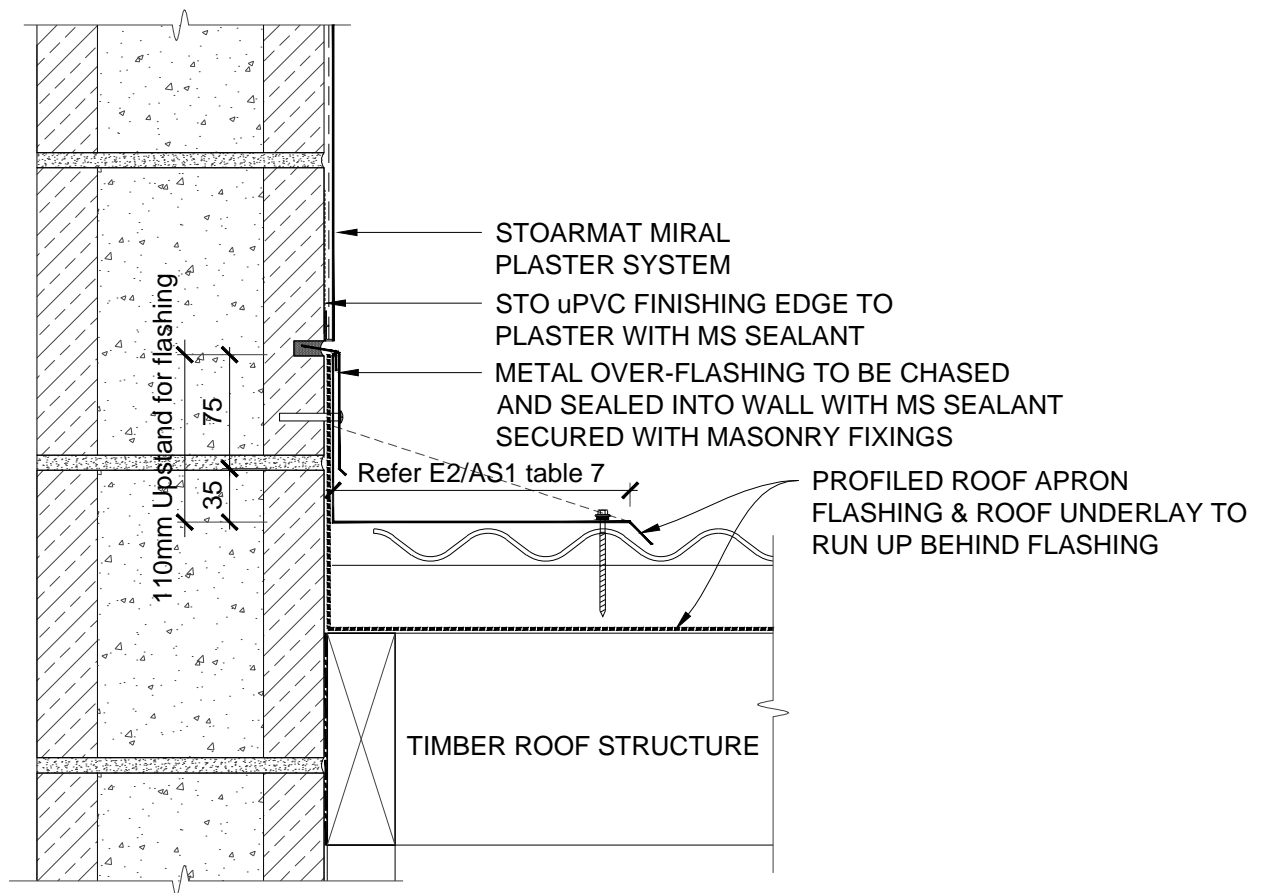
**NOTE:**

- MAX.ANGLE OF SOFFIT RESTRICTED TO BETWEEN 91° - 115°
- SOFFITS ARE FIXED AFTER PLASTERING

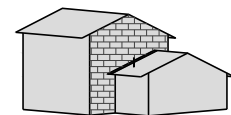
SCALE 1:10

STO CONCRETE BLOCK	STO CONCRETE BLOCK	CB 604
	RAKING SOFFIT (REVERSED)	2014

The information contained in this detail is based on our experience and testing and represents the latest information available at the date of issue. This detail is intended for use by the design professional and users of Sto products to assist in developing specific project details to be used in conjunction with a Sto Specification. We reserve the right to alter or update information at any time without prior notice & it is the responsibility of the specifier and/or the project manager to insure that they have the current Sto details and specifications.



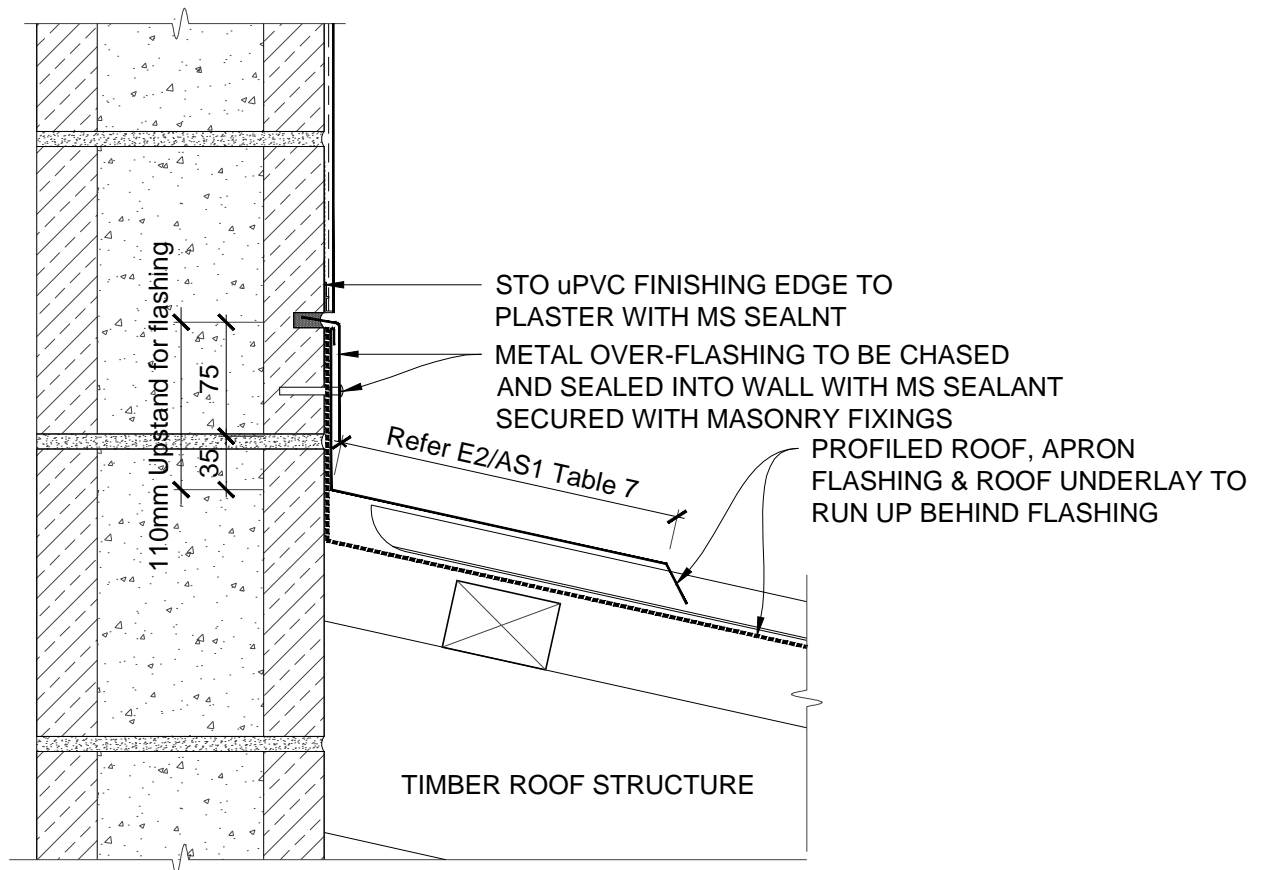
**NOTE:** INSTALL DIVERTER FLASHING AT ROOF/GUTTER JUNCTION



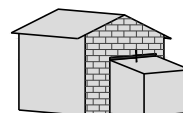
SCALE 1:5

STO CONCRETE BLOCK	STO CONCRETE BLOCK GABLE END/ROOF JUNCTION	CB 700 2014
--------------------	---	----------------

The information contained in this detail is based on our experience and testing and represents the latest information available at the date of issue. This detail is intended for use by the design professional and users of Sto products to assist in developing specific project details to be used in conjunction with a Sto Specification. We reserve the right to alter or update information at any time without prior notice & it is the responsibility of the specifier and/or the project manager to insure that they have the current Sto details and specifications.



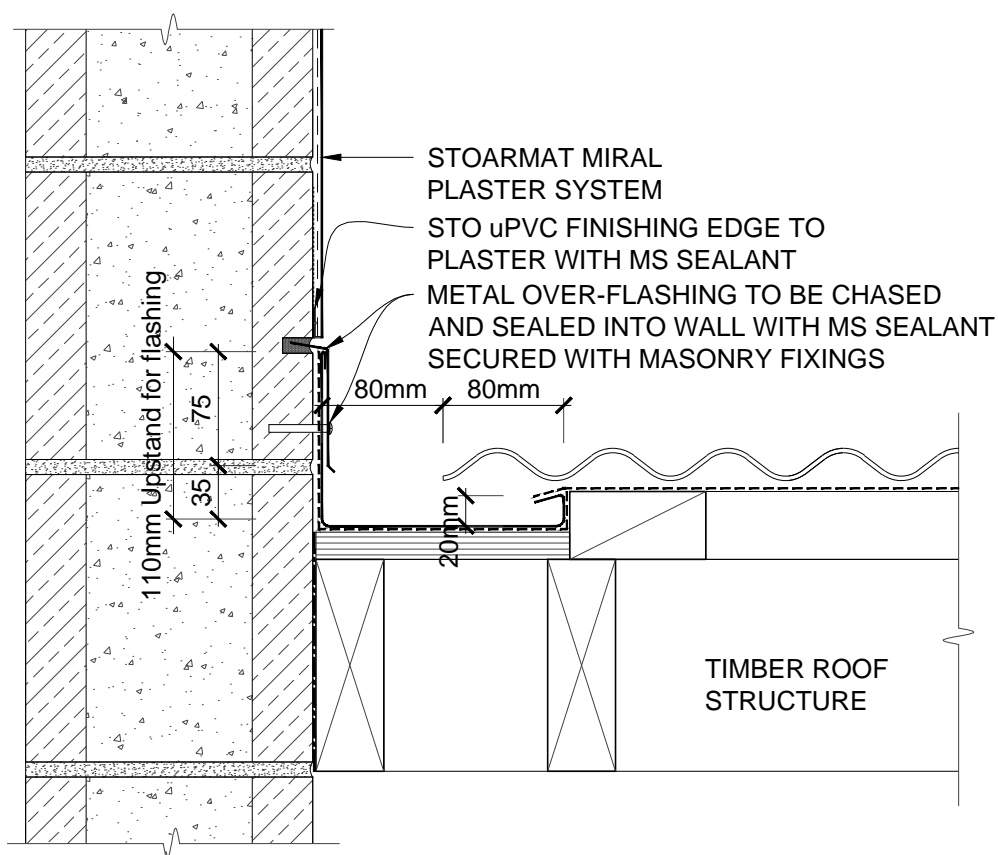
**NOTE:**  
ENSURE APRON FLASHING IS OVER  
FLASHED AT BOTH ENDS



SCALE 1:5

STO CONCRETE BLOCK	STO CONCRETE BLOCK APRON FLASHING	CB 701
		2014

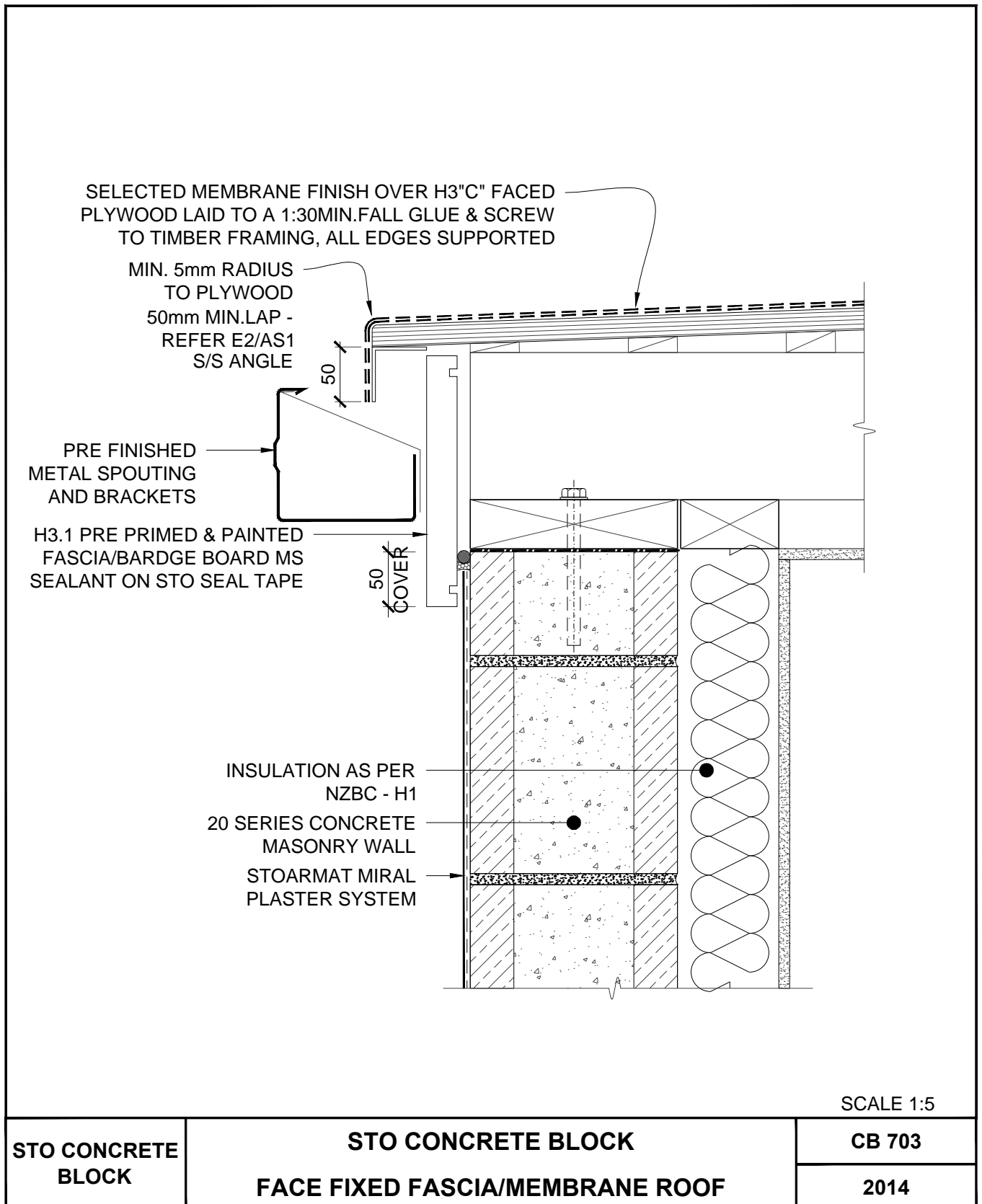
The information contained in this detail is based on our experience and testing and represents the latest information available at the date of issue. This detail is intended for use by the design professional and users of Sto products to assist in developing specific project details to be used in conjunction with a Sto Specification. We reserve the right to alter or update information at any time without prior notice & it is the responsibility of the specifier and/or the project manager to insure that they have the current Sto details and specifications.



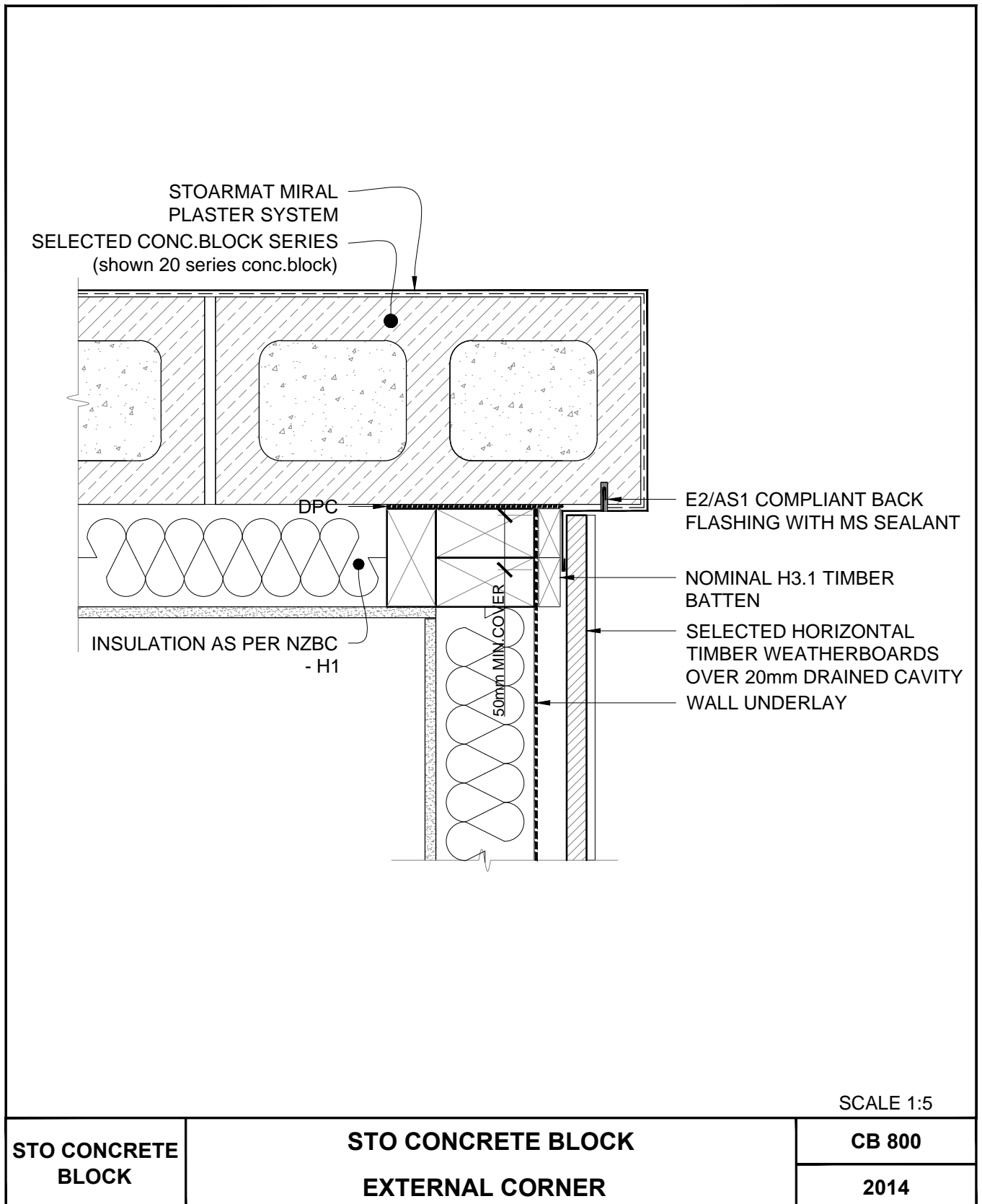
SCALE 1:5

<b>STO CONCRETE BLOCK</b>	<b>STO CONCRETE BLOCK PARALLEL ROOF/HIDDEN GUTTER</b>	<b>CB 702</b>
		<b>2014</b>

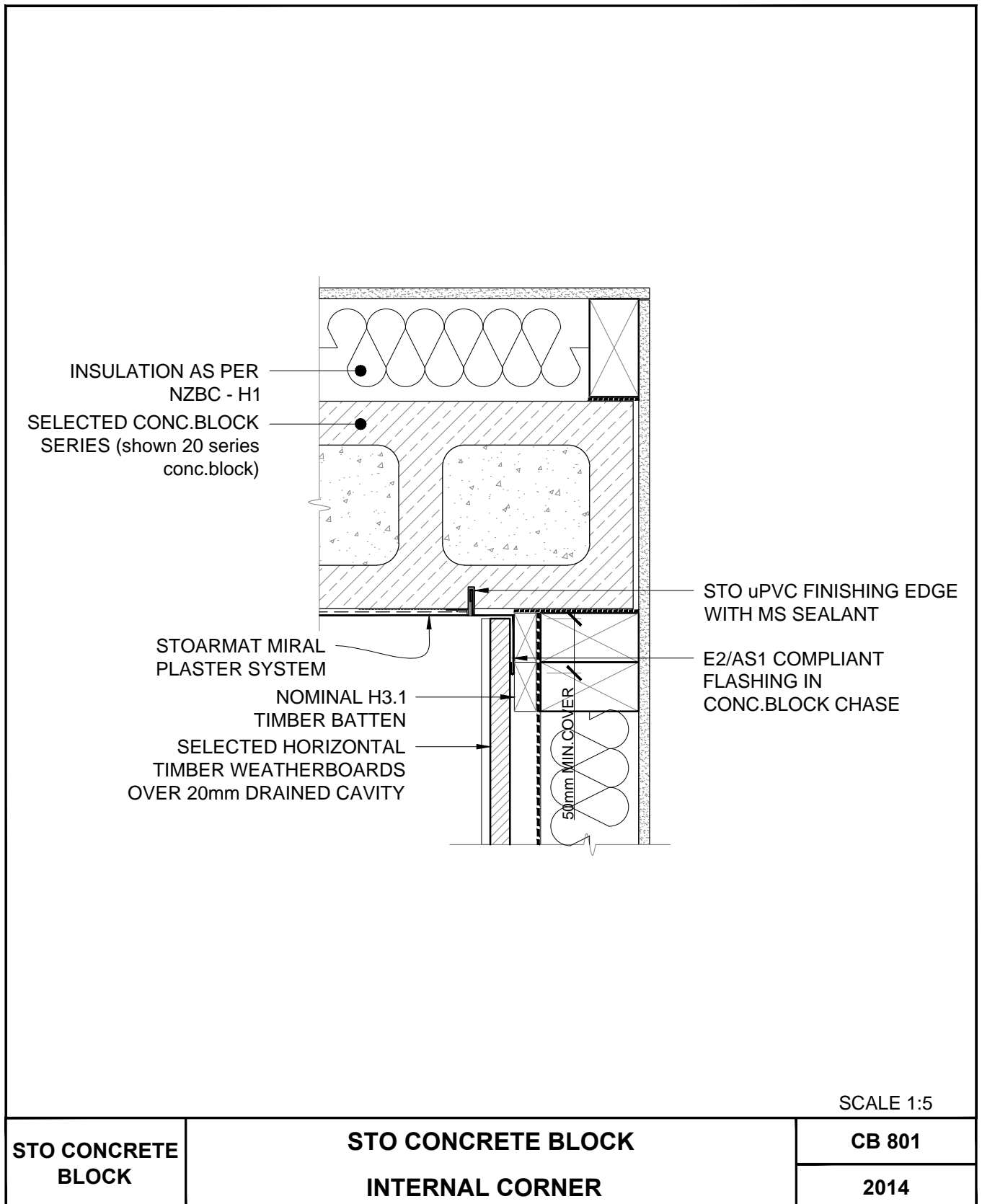
The information contained in this detail is based on our experience and testing and represents the latest information available at the date of issue. This detail is intended for use by the design professional and users of Sto products to assist in developing specific project details to be used in conjunction with a Sto Specification. We reserve the right to alter or update information at any time without prior notice & it is the responsibility of the specifier and/or the project manager to insure that they have the current Sto details and specifications.



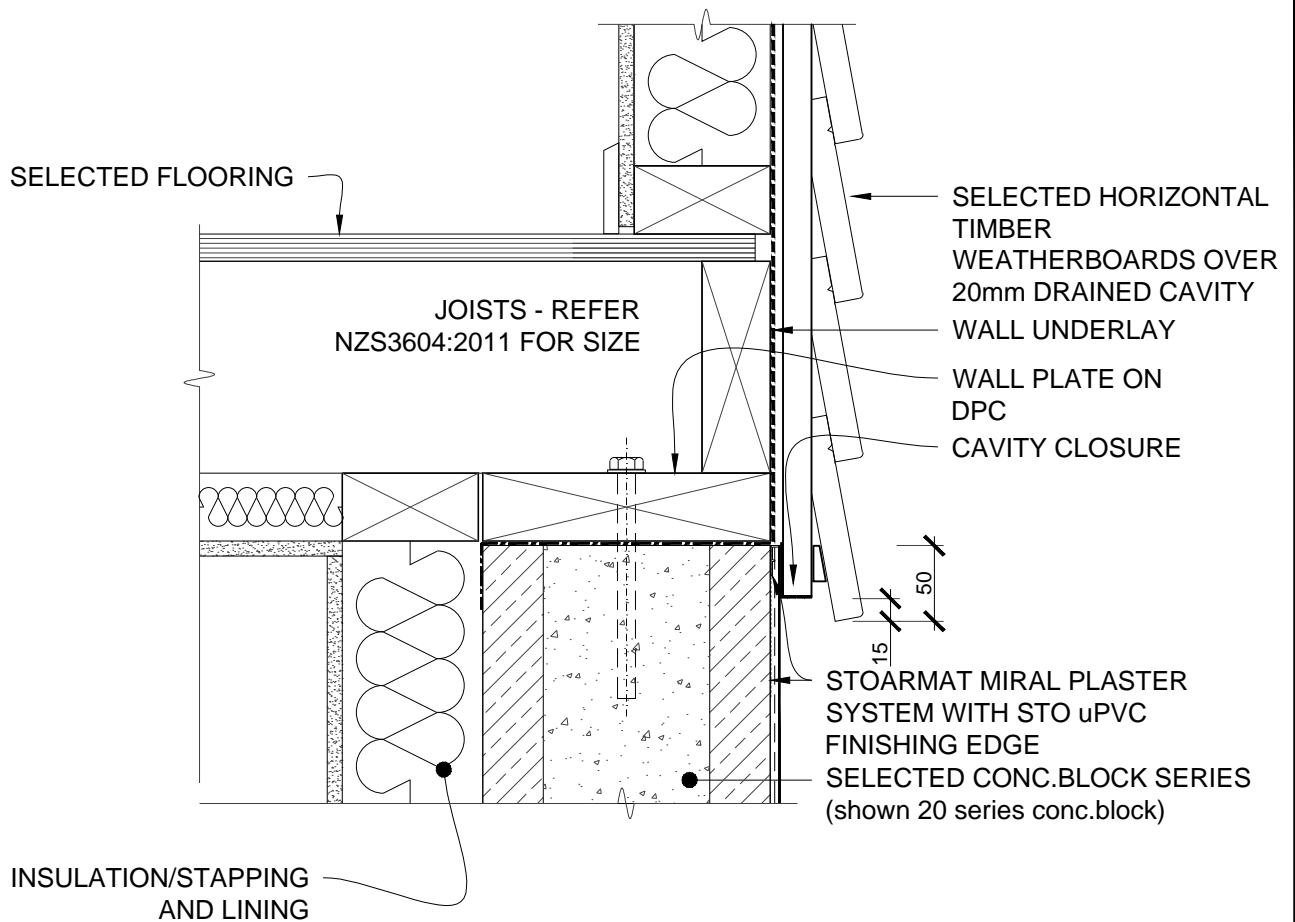
The information contained in this detail is based on our experience and testing and represents the latest information available at the date of issue. This detail is intended for use by the design professional and users of Sto products to assist in developing specific project details to be used in conjunction with a Sto Specification. We reserve the right to alter or update information at any time without prior notice & it is the responsibility of the specifier and/or the project manager to insure that they have the current Sto details and specifications.



The information contained in this detail is based on our experience and testing and represents the latest information available at the date of issue. This detail is intended for use by the design professional and users of Sto products to assist in developing specific project details to be used in conjunction with a Sto Specification. We reserve the right to alter or update information at any time without prior notice & it is the responsibility of the specifier and/or the project manager to insure that they have the current Sto details and specifications.



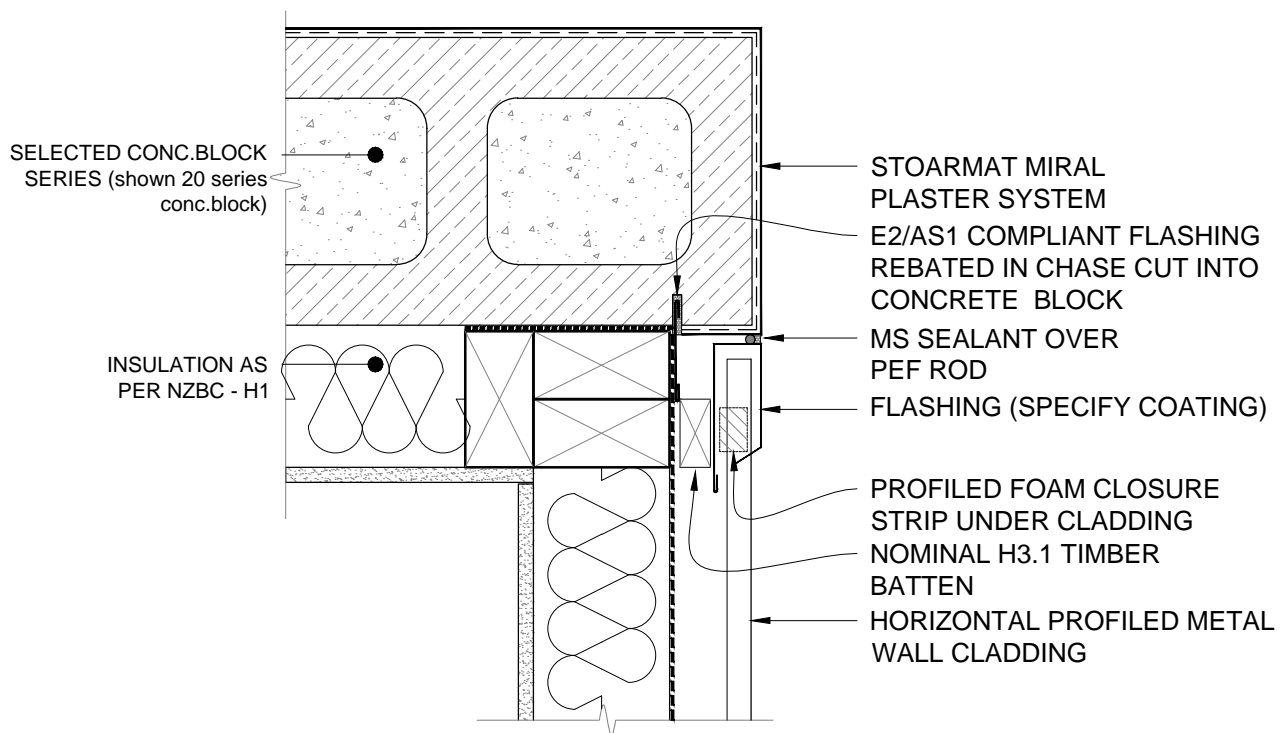
The information contained in this detail is based on our experience and testing and represents the latest information available at the date of issue. This detail is intended for use by the design professional and users of Sto products to assist in developing specific project details to be used in conjunction with a Sto Specification. We reserve the right to alter or update information at any time without prior notice & it is the responsibility of the specifier and/or the project manager to insure that they have the current Sto details and specifications.



SCALE 1:5

STO CONCRETE BLOCK	STO CONCRETE BLOCK HORIZONTAL JUNCTION/WEATHERBOARD	CB 802
		2014

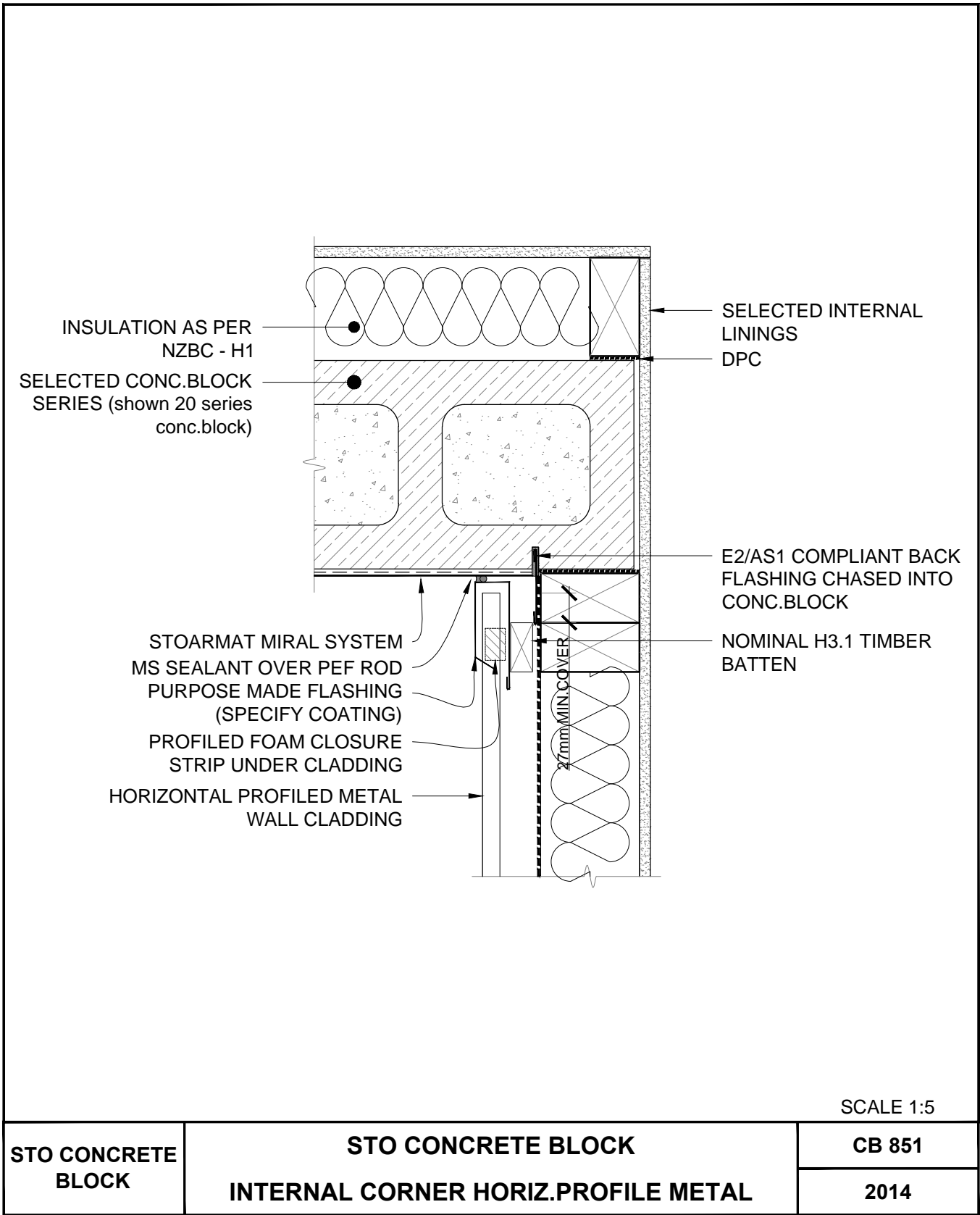
The information contained in this detail is based on our experience and testing and represents the latest information available at the date of issue. This detail is intended for use by the design professional and users of Sto products to assist in developing specific project details to be used in conjunction with a Sto Specification. We reserve the right to alter or update information at any time without prior notice & it is the responsibility of the specifier and/or the project manager to insure that they have the current Sto details and specifications.



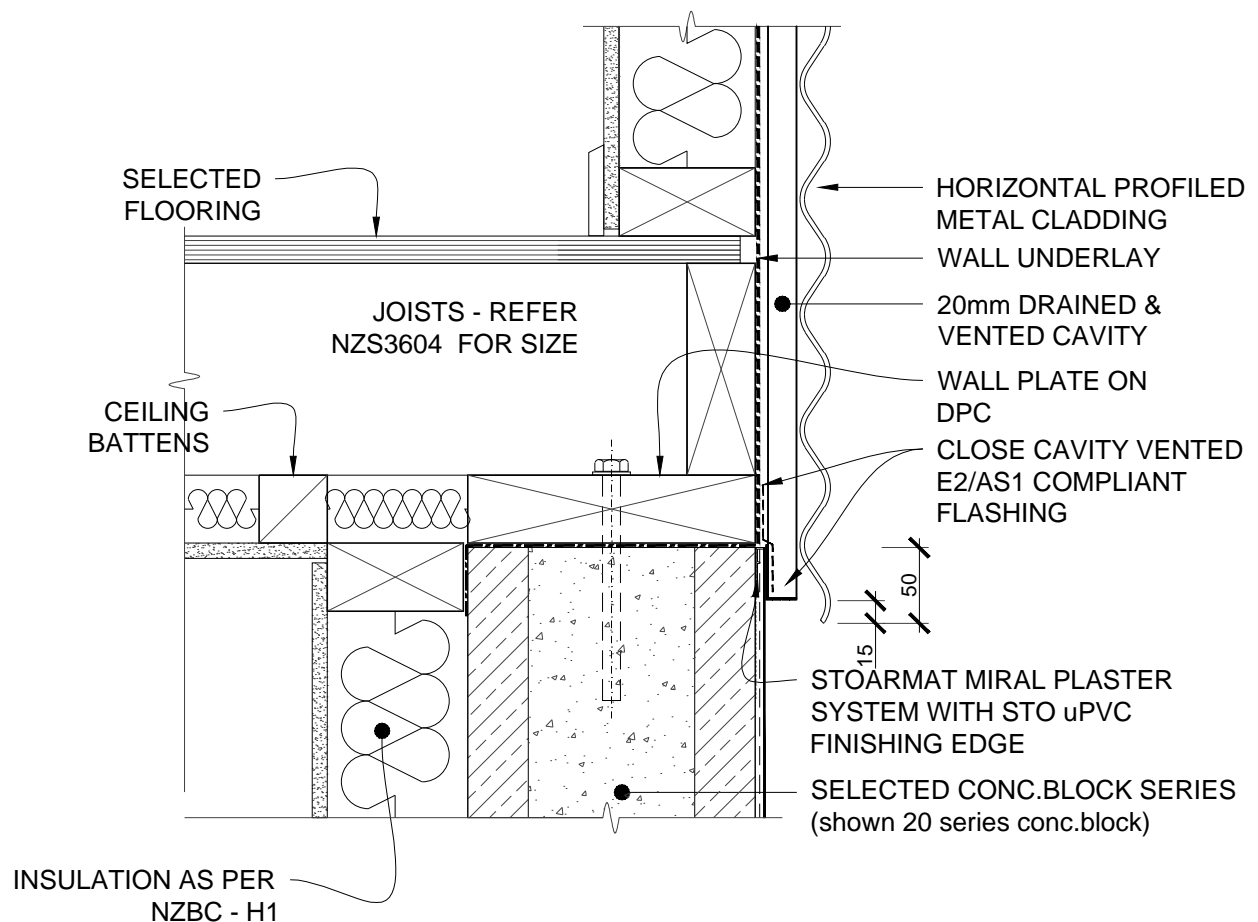
SCALE 1:5

STO CONCRETE BLOCK	STO CONCRETE BLOCK EXTERNAL CORNER HORIZ.PROFILED METAL	CB 850
		2014

The information contained in this detail is based on our experience and testing and represents the latest information available at the date of issue. This detail is intended for use by the design professional and users of Sto products to assist in developing specific project details to be used in conjunction with a Sto Specification. We reserve the right to alter or update information at any time without prior notice & it is the responsibility of the specifier and/or the project manager to insure that they have the current Sto details and specifications.



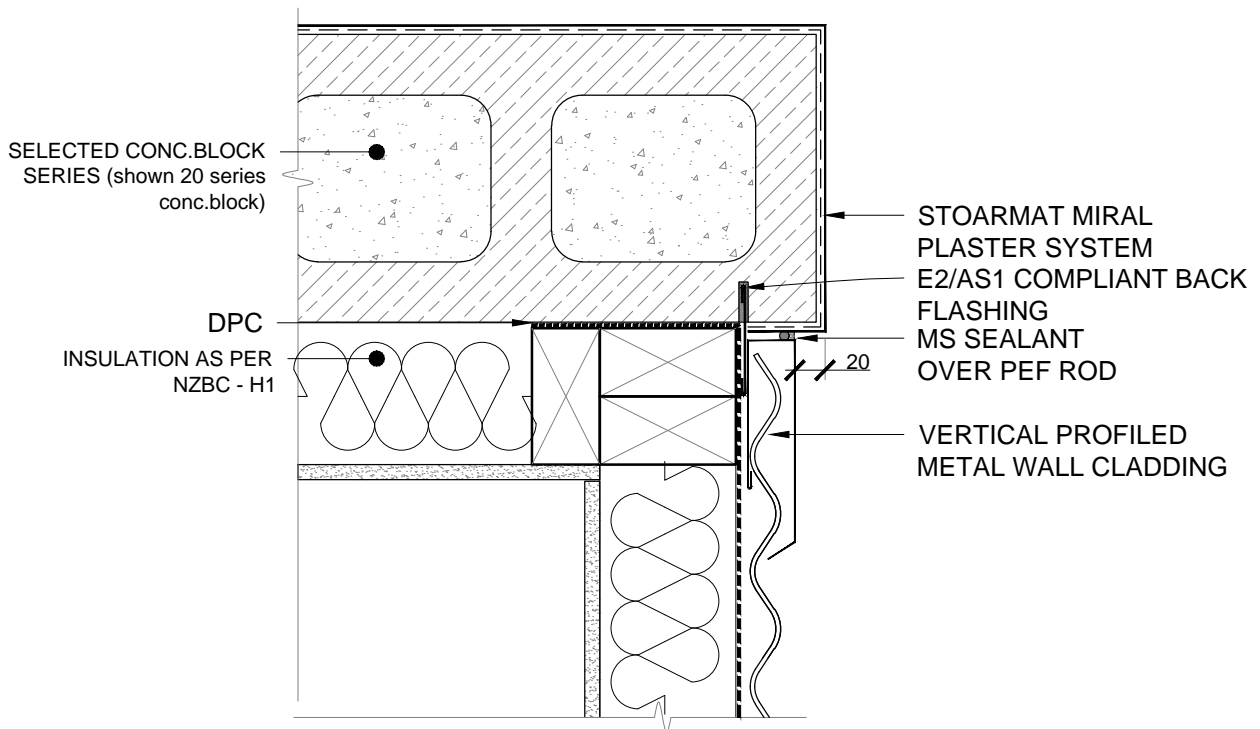
The information contained in this detail is based on our experience and testing and represents the latest information available at the date of issue. This detail is intended for use by the design professional and users of Sto products to assist in developing specific project details to be used in conjunction with a Sto Specification. We reserve the right to alter or update information at any time without prior notice & it is the responsibility of the specifier and/or the project manager to insure that they have the current Sto details and specifications.



SCALE 1:5

STO CONCRETE BLOCK	STO CONCRETE BLOCK HORIZONTAL JUNCTION/HORIZ.PROFILED METAL	CB 852
		2014

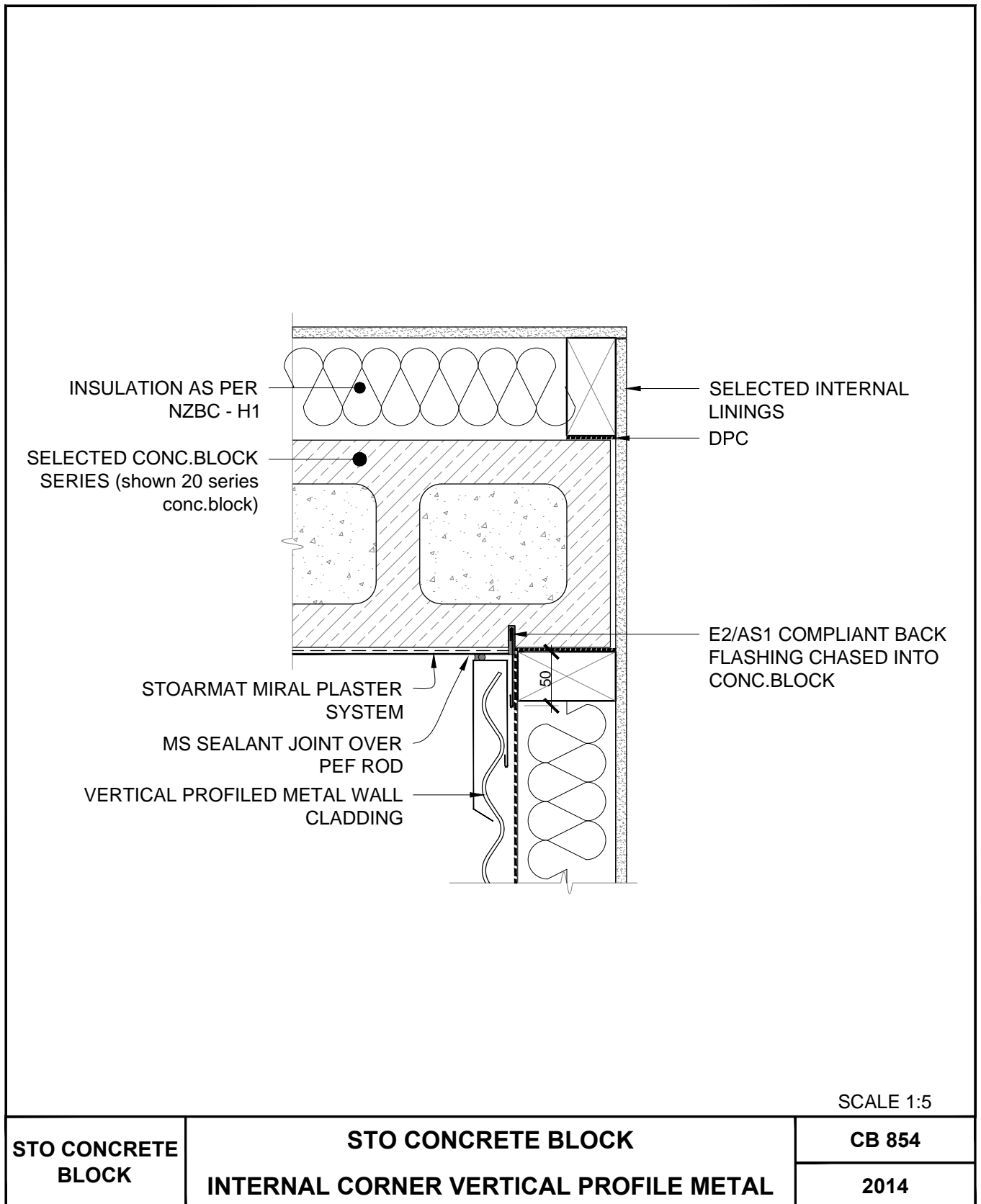
The information contained in this detail is based on our experience and testing and represents the latest information available at the date of issue. This detail is intended for use by the design professional and users of Sto products to assist in developing specific project details to be used in conjunction with a Sto Specification. We reserve the right to alter or update information at any time without prior notice & it is the responsibility of the specifier and/or the project manager to insure that they have the current Sto details and specifications.



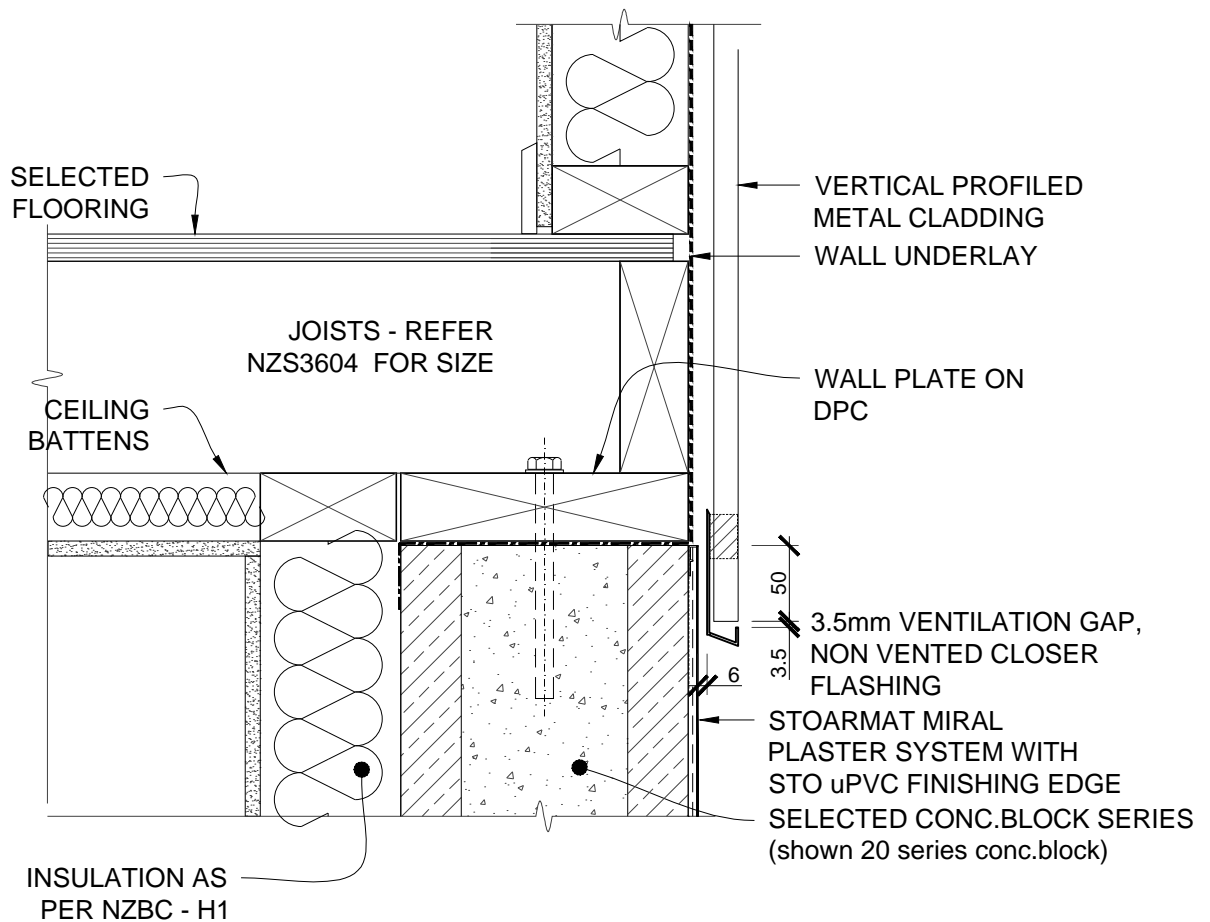
SCALE 1:5

STO CONCRETE BLOCK	STO CONCRETE BLOCK EXTERNAL CORNER VERTICAL.PROFILED METAL	CB 853
		2014

The information contained in this detail is based on our experience and testing and represents the latest information available at the date of issue. This detail is intended for use by the design professional and users of Sto products to assist in developing specific project details to be used in conjunction with a Sto Specification. We reserve the right to alter or update information at any time without prior notice & it is the responsibility of the specifier and/or the project manager to insure that they have the current Sto details and specifications.



The information contained in this detail is based on our experience and testing and represents the latest information available at the date of issue. This detail is intended for use by the design professional and users of Sto products to assist in developing specific project details to be used in conjunction with a Sto Specification. We reserve the right to alter or update information at any time without prior notice & it is the responsibility of the specifier and/or the project manager to insure that they have the current Sto details and specifications.



SCALE 1:5

STO CONCRETE BLOCK	STO CONCRETE BLOCK HORIZ.JUNCTION/VERTICAL PROFILED METAL	CB 855
		2014

The information contained in this detail is based on our experience and testing and represents the latest information available at the date of issue. This detail is intended for use by the design professional and users of Sto products to assist in developing specific project details to be used in conjunction with a Sto Specification. We reserve the right to alter or update information at any time without prior notice & it is the responsibility of the specifier and/or the project manager to insure that they have the current Sto details and specifications.