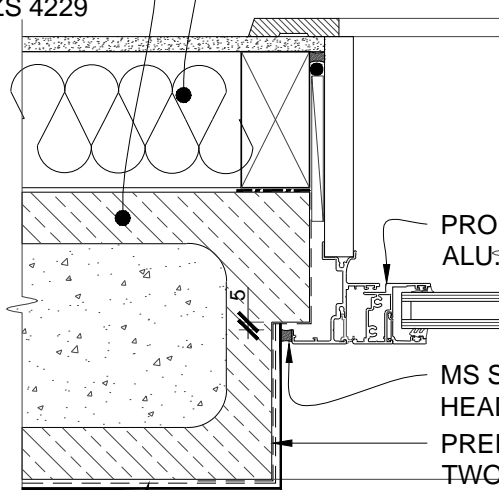


INSULATION AS PER
NZBC - H1
20 SERIES CONCRETE
MASONRY WALL - REINFORCED
AS PER NZS 4229



PROPRIETARY
ALU: WINDOW JOINERY

MS SEALANT CONTINUOUS AROUND
HEAD & JAMBS

PREPARE REBATES; BRUSH APPLY
TWO (2) COATS OF STO FLEXYL
WATERPROOFING TO JAMB & HEAD
REBATES BEFORE INSTALLING
JOINERY

STOARMAT MIRAL
PLASTER SYSTEM

SCALE 1:5

STO CONCRETE BLOCK	STO CONCRETE BLOCK	CB 401
	ALUMINIUM JOINERY - JAMB DETAIL	2014

The information contained in this detail is based on our experience and testing and represents the latest information available at the date of issue. This detail is intended for use by the design professional and users of Sto products to assist in developing specific project details to be used in conjunction with a Sto Specification. We reserve the right to alter or update information at any time without prior notice & it is the responsibility of the specifier and/or the project manager to insure that they have the current Sto details and specifications.