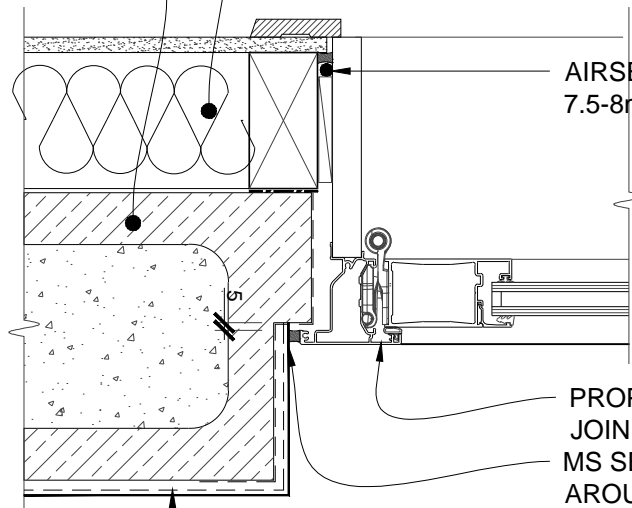


INSULATION AS PER
NZBC - H1
20 SERIES
CONCRETE BLOCK



AIRSEAL ON PEF ROD GAP
7.5-8mm APPROX & PACKER

STOARMAT MIRAL
PLASTER SYSTEM

PROPRIETARY ALU.DOOR
JOINERY
MS SEALANT CONTINUOUS
AROUND HEAD & JAMBS
PREPARE REBATES AND BRUSH
APPLY TWO (2) COATS OF STO
FLEXYL WATERPROOFING TO
ALL REBATES BEFORE
INSTALLING JOINERY

SCALE 1:5

STO CONCRETE BLOCK	STO CONCRETE BLOCK	CB 403
	ALUMINIUM JOINERY - JAMB DETAIL	2014

The information contained in this detail is based on our experience and testing and represents the latest information available at the date of issue. This detail is intended for use by the design professional and users of Sto products to assist in developing specific project details to be used in conjunction with a Sto Specification. We reserve the right to alter or update information at any time without prior notice & it is the responsibility of the specifier and/or the project manager to insure that they have the current Sto details and specifications.