



## STO DRAWING REGISTER

Drawing Description

Drawing No.

### Drawing Register

STMI 001 - 002

#### Introduction Series 000

StoTherm Mineral Insulation System - Introduction

STMI 003

#### Block Layout Series 100

StoTherm Mineral Insulation System - Isometric

STMI 100

StoTherm Mineral Insulation Board Layout - Elevation

STMI 101

StoTherm Mineral Insulation Anchor Layout - Elevation

STMI 102

StoTherm Mineral Insulation Masonry Fixing

STMI 103

#### Foundation Series 200

StoTherm Mineral Insulation System Wall/Footing Junction

STMI 200

StoTherm Mineral Insulation System Below Ground Insulation

STMI 201

#### Walls Series 300

StoTherm Mineral Insulation System External Corner

STMI 300

StoTherm Mineral Insulation System Internal Corner

STMI 301

StoTherm Mineral Insulation System Control Joint Detail

STMI 302

StoTherm Mineral Insulation System Stair Waterproofing Detail

STMI 303

#### Wall Penetrations & Fittings Series 350

StoTherm Mineral Insulation System Pipe Penetration (up to 150mm Ø) Detail

STMI 350

StoTherm Mineral Insulation System Meterbox

STMI 351

StoTherm Mineral Insulation System Light Fitting/Fixing Detail

STMI 352

StoTherm Mineral Insulation System Tap Fitting/Fixing Detail

STMI 353

StoTherm Mineral Insulation System Handrail Bracket/Fixing Detail

STMI 354

StoTherm Mineral Insulation System Downpipe Saddle Fixing

STMI 355

StoTherm Mineral Insulation System Fan Vent Detail

STMI 356

#### Joinery Series 400

StoTherm Mineral Insulation System Alu.Joinery - Head & Sill Detail

STMI 400

StoTherm Mineral Insulation System Alu.Joinery - Jamb Detail

STMI 401

StoTherm Mineral Insulation System Timber Joinery - Head & Sill Detail

STMI 402

StoTherm Mineral Insulation System Timber Joinery - Jamb Detail

STMI 403

StoTherm Mineral Insulation System Alu.Entry Door Head & Threshold Detail

STMI 404

StoTherm Mineral Insulation System Timber Entry Door Head & Threshold Detail

STMI 405

StoTherm Mineral Insulation System 20mm Insulation to recess - Head & Sill Detail

STMI 406

StoTherm Mineral Insulation System 20mm Insulation to recess - Jamb Detail

STMI 407

StoTherm Mineral Insulation System 40mm Insulation to recess - Head & Sill Detail

STMI 408

StoTherm Mineral Insulation System 40mm Insulation to recess - Jamb Detail

STMI 409

#### Parapets, Balustrades, Decks Series 500

StoTherm Mineral Insulation System Parapet/Metal Flashing Detail

STMI 500

StoTherm Mineral Insulation System Rendered Balustrade Detail

STMI 501

StoTherm Mineral Insulation System Parapet/Roof/Wall Detail

STMI 502

StoTherm Mineral Insulation System Insulated Roof / Deck to Walls

STMI 503

THESE DETAILS ARE ISSUED AS A GUIDE USING STANDARD BUILDING PRACTICES BASED ON THE NZBC. VARIOUS BUILDING COMPONENTS ARE DETAILED AND IT IS THE RESPONSIBILITY OF EACH TRADE INVOLVED TO ENSURE THAT THEIR PARTICULAR ELEMENTS ARE INSTALLED CORRECTLY. NOTE: REFER TO INDIVIDUAL MANUFACTURES FOR CURRENT DETAILS AND SPECIFICATIONS - SEE [www.sto.co.nz](http://www.sto.co.nz) FOR CURRENT DETAILS. RBW DETAILS MUST BE ISSUED BY A; REGISTERED ARCHITECT, LICENSED DESIGNER OR CHARTERED ENGINEER

PAGE 1 OF 2

STOTHERM MINERAL	STOTHERM MINERAL MASONRY INSULATION SYSTEM  DRAWING REGISTER	STMI 001  2017
---------------------	--	----------------------

The information contained on this page is based on our experience and research at the date of issue. The detail is for use by Registered Architects, Licensed Designers or Chartered Engineers to assist in developing project details using Sto Systems. Stoanz Ltd reserve the right to alter or update information at any time without prior notice and it is the responsibility of the designer, project manager or Sto contractor to insure they have and use the current Sto details and specifications on site.



## STO DRAWING REGISTER

Drawing Description

Drawing No.

### Soffit Series 600

StoTherm Mineral Insulation System Flat Soffit	STMI 600
StoTherm Mineral Insulation System Raking Soffit	STMI 601
StoTherm Mineral Insulation System Raking Soffit (reversed)	STMI 602
StoTherm Mineral Insulation System Face Fixed Fascia	STMI 603

### Roof Series 700

StoTherm Mineral Insulation System Barge with Overhang	STMI 700
StoTherm Mineral Insulation System Parallel Apron flashing at Parapet	STMI 701
StoTherm Mineral Insulation System Eaves with Overhang	STMI 702
StoTherm Mineral Insulation System Eaves without Overhang	STMI 703
StoTherm Mineral Insulation System Parallel Apron Flashing	STMI 704
StoTherm Mineral Insulation System Transverse Apron Flashing	STMI 705
StoTherm Mineral Insulation System Parallel Roof/Hidden Gutter	STMI 706
StoTherm Mineral Insulation Face Fixed Fascia/Membrane Roof	STMI 707

### Dissimilar Material

#### Bevel-Back Weatherboard Series 800

StoTherm Mineral Insulation System Ext.Corner	STMI 800
StoTherm Mineral Insulation System Int.Corner	STMI 801
StoTherm Mineral Insulation System Horizontal Junction	STMI 802

**Brick Series 810** series *not* issued

**Fibre Cement Sheet Series 820** series *not* issued

**Manufactured Stone - Schist & Natural Stone Series 840** series *not* issued

#### Profile Metal Series 850

StoTherm Mineral Insulation System Ext.Cnr Horiz.Profiled Metal	STMI 850
StoTherm Mineral Insulation System Int.Cnr Horiz.Profiled Metal	STMI 851
StoTherm Mineral Insulation System Horizontal Junction/Horiz.Profiled Metal	STMI 852
StoTherm Mineral Insulation System Ext.Cnr Vertical Profiled Metal	STMI 853
StoTherm Mineral Insulation System Int.Cnr Vertical Profiled Metal	STMI 854
StoTherm Mineral Insulation System Horizontal Junction/Vertical Profiled Metal	STMI 855

**StoTherm Panel 860** series *not* issued

**DISSIMILAR JOINERY Series 870** series *not* issued

THESE DETAILS ARE ISSUED AS A GUIDE USING STANDARD BUILDING PRACTICES BASED ON THE NZBC. VARIOUS BUILDING COMPONENTS ARE DETAILED AND IT IS THE RESPONSIBILITY OF EACH TRADE INVOLVED TO ENSURE THAT THEIR PARTICULAR ELEMENTS ARE INSTALLED CORRECTLY. NOTE: REFER TO INDIVIDUAL MANUFACTURES FOR CURRENT DETAILS AND SPECIFICATIONS - SEE [www.sto.co.nz](http://www.sto.co.nz) FOR CURRENT DETAILS. RBW DETAILS MUST BE ISSUED BY A; REGISTERED ARCHITECT, LICENSED DESIGNER OR CHARTERED ENGINEER

PAGE 2 OF 2

STOTHERM MINERAL	STOTHERM MINERAL MASONRY INSULATION SYSTEM  DRAWING REGISTER	STMI 002
		2017

The information contained on this page is based on our experience and research at the date of issue. The detail is for use by Registered Architects, Licensed Designers or Chartered Engineers to assist in developing project details using Sto Systems. Stoanz Ltd reserve the right to alter or update information at any time without prior notice and it is the responsibility of the designer, project manager or Sto contractor to insure they have and use the current Sto details and specifications on site.

**SS205M STOTHERM MINERAL MASONRY INSULATION SYSTEM BRANZ APPRAISAL CERTIFICATE NO. 604 INCORPORATING:**

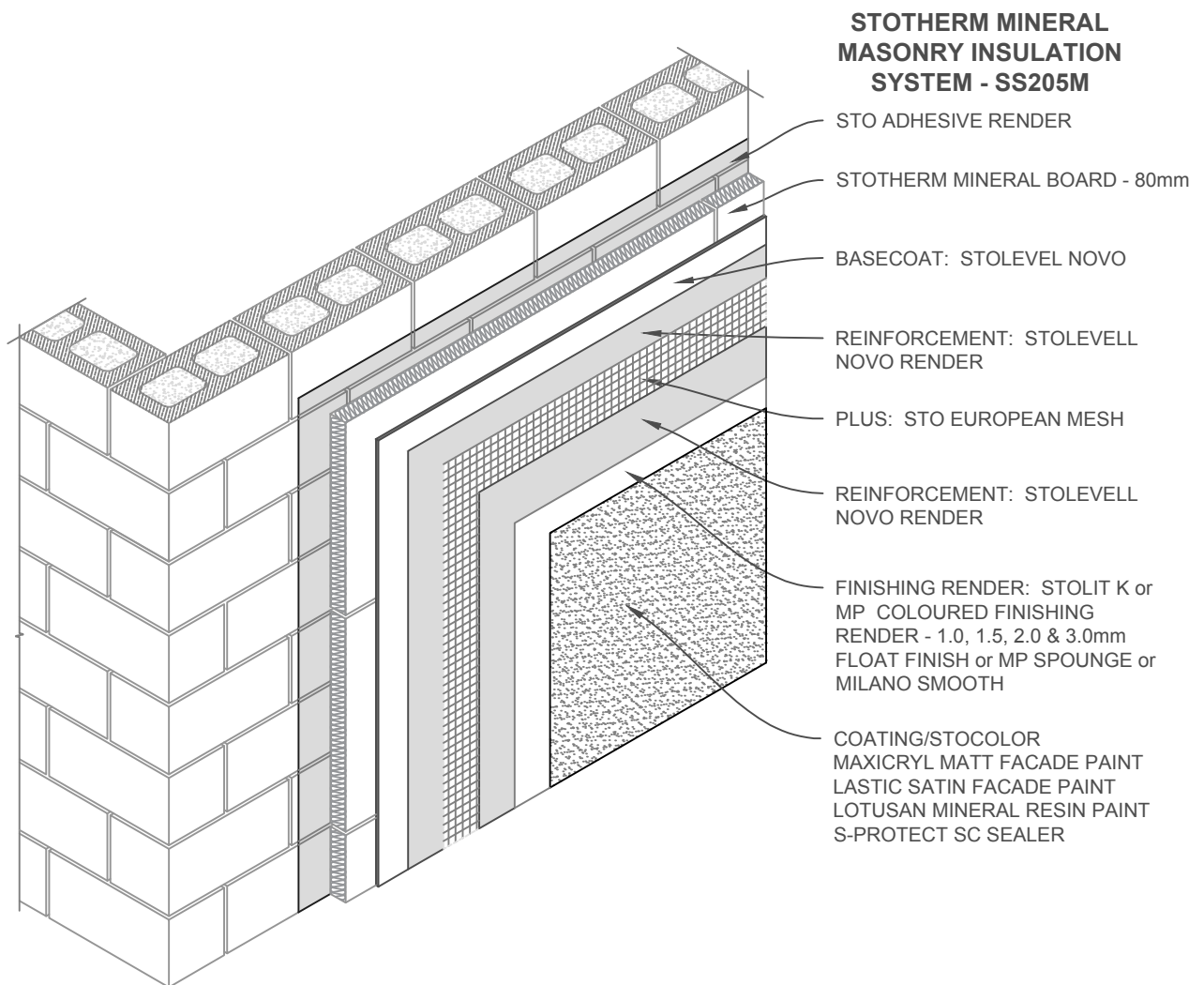
1. 80mm STOTHERM MINERAL NON-COMBUSTABLE FACADE BOARD.
2. STOFLEXYL WATERPROOFING 18kg PAIL PLUS CEMENT EVALUATED BY BRANZ TO MEET AS/NZS4858 AS A WATERPROOFING MEMBRANE IN ACCORDANCE WITH NZBC E2/AS1
3. STOLEVELL NOVO 15kg BAG ADHESIVE RENDER TO ADHERE BOARDS.
4. STOLEVELL NOVO BASECOAT RENDER TO STRAIGHTEN BOARDS.
5. STOLEVELL NOVO RENDER LIGHTWEIGHT MINERAL RENDER COAT USED WITH EUROPEAN MESH AS REINFORCEMENT.
6. STOLIT K or MP COLOURED RENDER 25kg PAIL EUROPEAN FIBRE REINFORCED NON-CEMENT BASED COLOURED FINISHING RENDER AVAILABLE IN STOLIT K 1.0/1.5/2.0/3.0mm FLOAT FINISH & STOLIT MP, MP NATURAL & MILANO FINE FINISH
7. STOCOLOR : STOCOLOR MAXICRYL MATT FACADE PAINT 15lt PAIL  
: STOCOLOR LASTIC SATIN FACADE PAINT 15lt PAIL  
: STOCOLOR LOTUSAN FLAT MINERAL PAINT 15lt PAIL  
: S-PROTECT SC STAY CLEAN SEALER FOR MP or MP NATURAL
8. ALTERNATIVELY USE STOARMAT LIGHTWEIGHT ORGANIC RENDER COAT USED WITH EUROPEAN MESH AS REINFORCEMENT FOR STOLIT MP, MP NATURAL AND MILANO FINISHES.

**SUNDRIES**

80mm STOTHERM MINERAL MASONRY ANCHORS  
STO uPVC CORNER ANGLES, DRIP EDGES, TRAYS, AND FINISHING EDGES.  
STOTHERM 80mm EPS PLINTH PANELS.

<b>STOTHERM MINERAL</b>	<b>STOTHERM MINERAL MASONRY INSULATION SYSTEM</b>  <b>INTRODUCTION</b>	<b>STMI 003</b>  <b>2017</b>
-----------------------------	--	------------------------------------

The information contained on this page is based on our experience and research at the date of issue. The detail is for use by Registered Architects, Licensed Designers or Chartered Engineers to assist in developing project details using Sto Systems. Stoanz Ltd reserve the right to alter or update information at any time without prior notice and it is the responsibility of the designer, project manager or Sto contractor to insure they have and use the current Sto details and specifications on site.

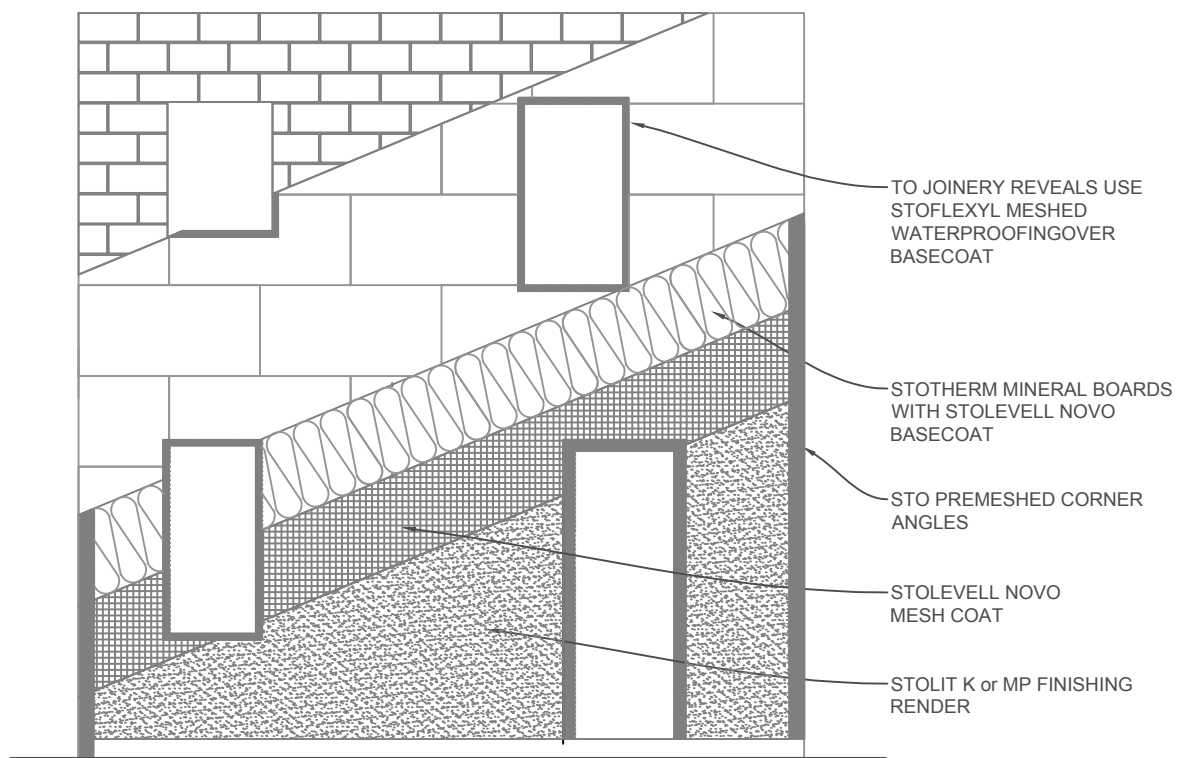


SCALE 1:20

<b>STOTHERM MINERAL</b>	<b>STOTHERM MINERAL MASONRY INSULATION SYSTEM</b>  <b>STOTHERM MINERAL SYSTEM - ISOMETRIC</b>	<b>STMI 100</b>  <b>2017</b>
-------------------------	---	------------------------------------

The information contained on this page is based on our experience and research at the date of issue. The detail is for use by Registered Architects, Licensed Designers or Chartered Engineers to assist in developing project details using Sto Systems. Stoanz Ltd reserve the right to alter or update information at any time without prior notice and it is the responsibility of the designer, project manager or Sto contractor to insure they have and use the current Sto details and specifications on site.

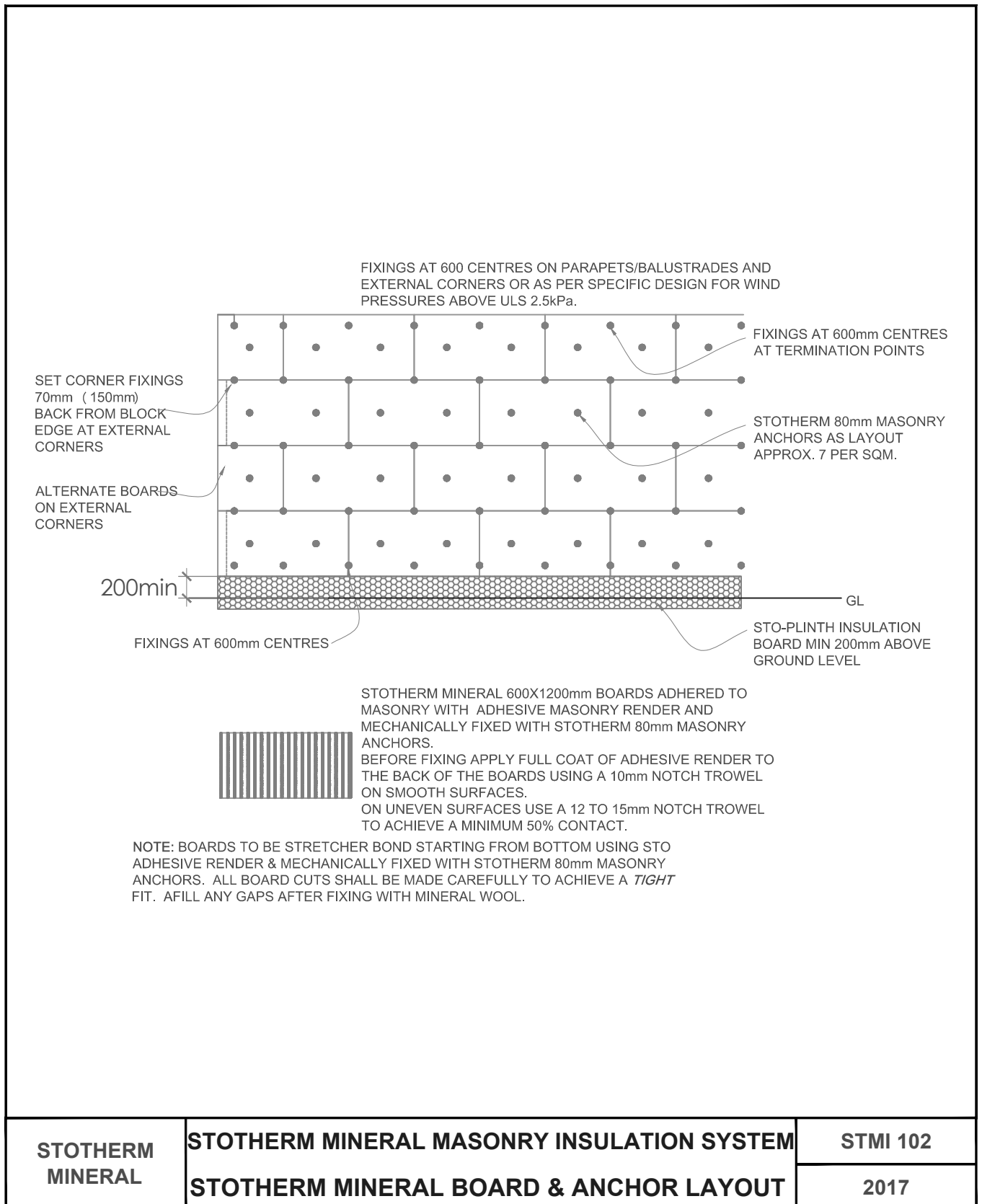
STOTHERM MINERAL BOARDS -  
600X1200x80MM THICK.  
DETAIL IS SHOWING 600X1200mm  
BOARDS



**NOTE:**  
BOARDS MUST BE STRETCHER BOND, STARTING FROM THE BOTTOM. TO BE  
RENDER ADHERED & MECHANICALLY FIXED WITH STOTHERM 80mm MASONRY  
ANCHORS. ALL PANEL CUTS SHALL BE MADE CAREFULLY TO ACHIEVE A **TIGHT**  
FIT.  
FILL ANY GAPS AFTER FIXING WITH MINERAL WOOL.

STOTHERM MINERAL	STOTHERM MINERAL MASONRY INSULATION SYSTEM	STMI 101
	STOTHERM MINERAL LAYOUT - ELEVATION	2017

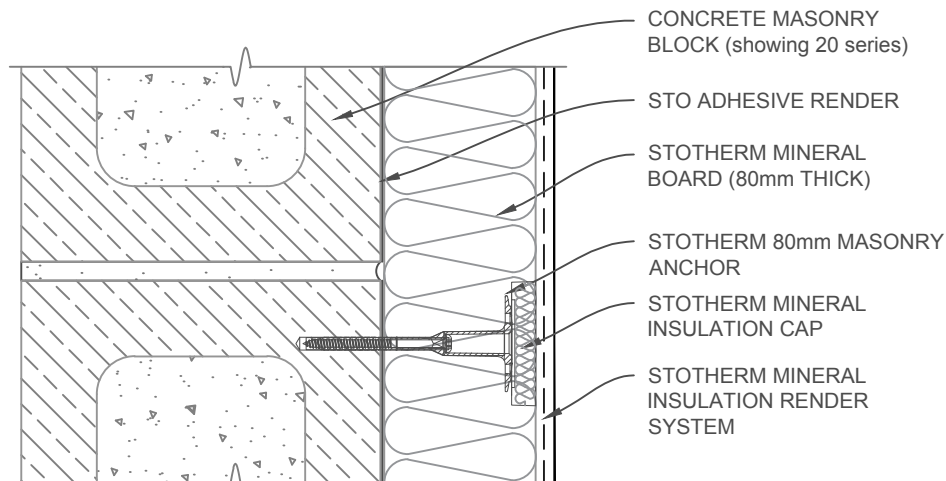
The information contained on this page is based on our experience and research at the date of issue. The detail is for use by Registered Architects, Licensed Designers or Chartered Engineers to assist in developing project details using Sto Systems. Stoanz Ltd reserve the right to alter or update information at any time without prior notice and it is the responsibility of the designer, project manager or Sto contractor to insure they have and use the current Sto details and specifications on site.



**1. INSULATION BOARDS: R VALUES**

STOTHERM 80mm MINERAL R-VALUE 2.28

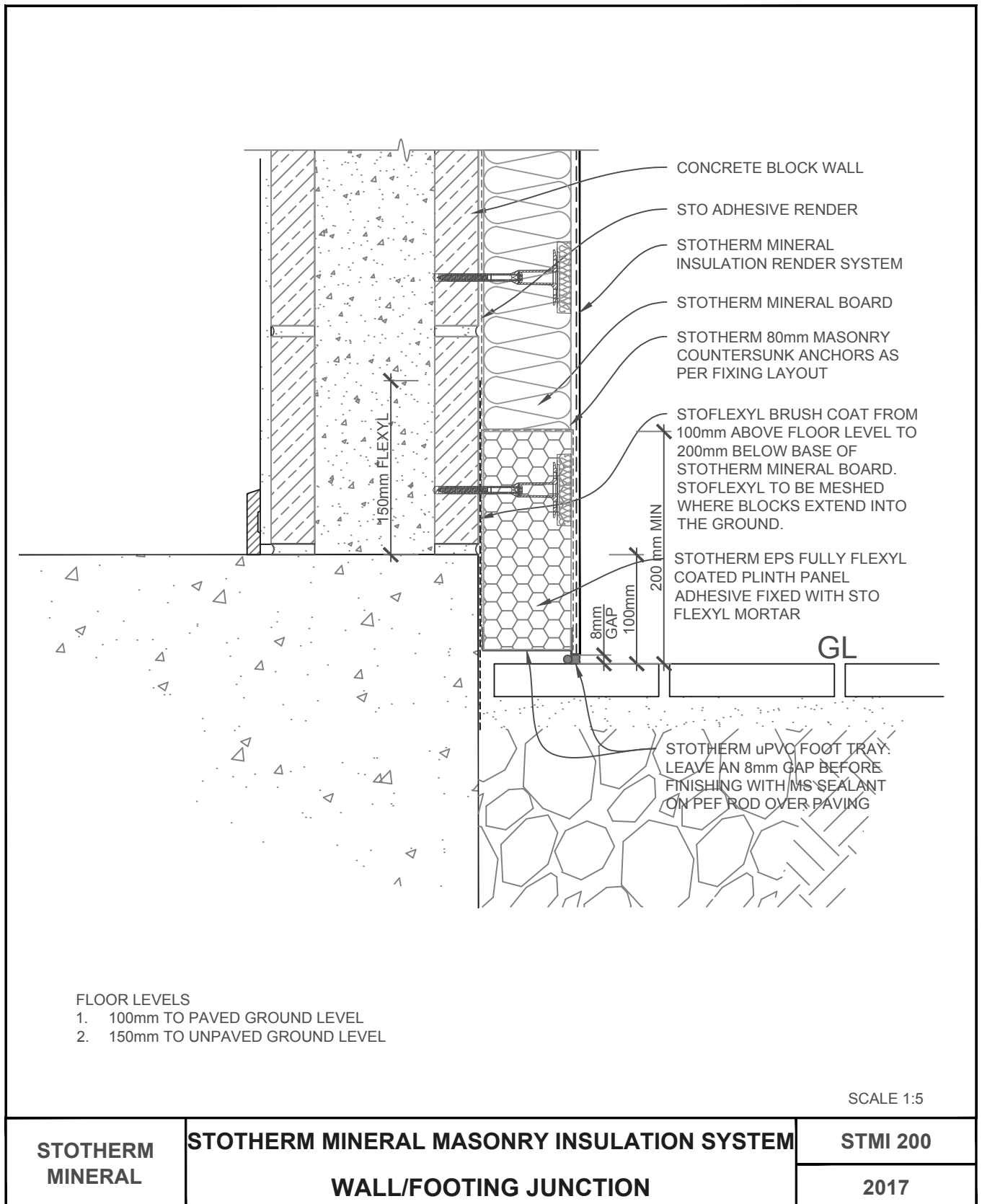
**2. COUNTER SUNK FIXINGS:** STOTHERM 80mm MASONRY ANCHORS WITH STO INSULATING CAP ELIMINATES *THERMAL BRIDGING SPOTS* ON 80mm STOTHERM MINERAL BOARDS.



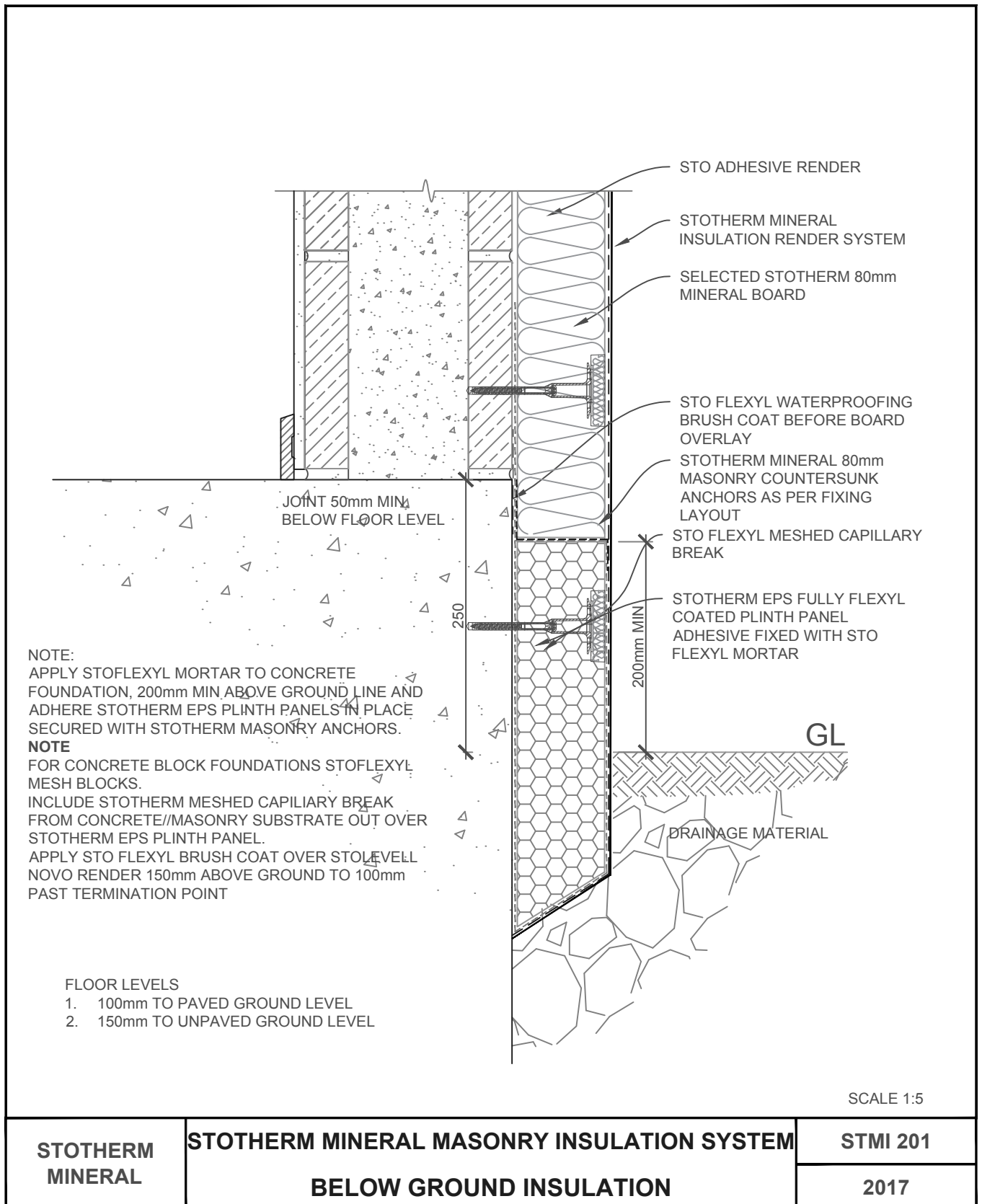
**STOTHERM COUNTERSUNK ANCHORS IN 80mm STOTHERM MINERAL BOARD**  
- TO ELIMINATE THERMAL BRIDGING

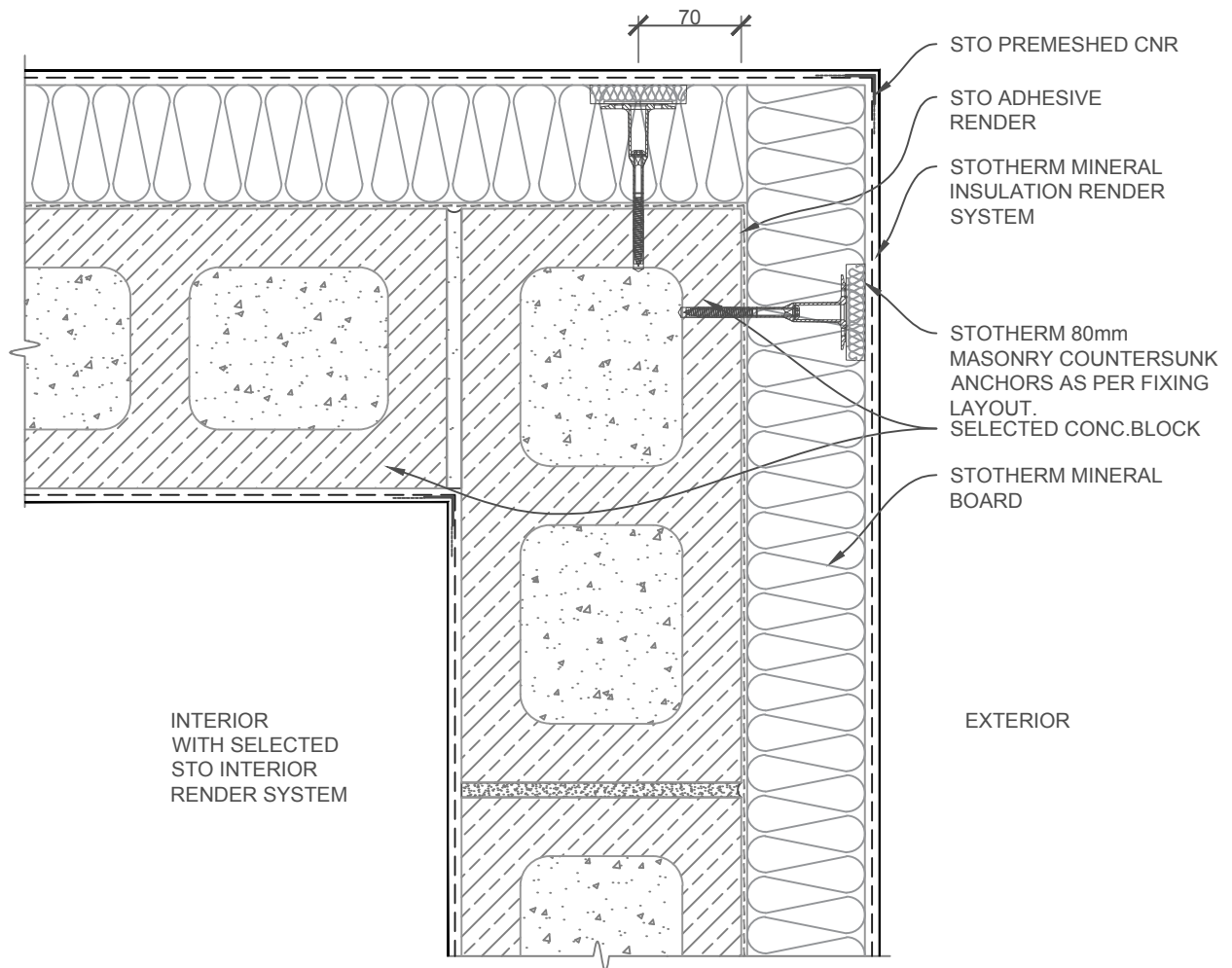
STOTHERM MINERAL	STOTHERM MINERAL MASONRY INSULATION SYSTEM	STMI 103
	STOTHERM MINERAL FIXING	2017

The information contained on this page is based on our experience and research at the date of issue. The detail is for use by Registered Architects, Licensed Designers or Chartered Engineers to assist in developing project details using Sto Systems. Stoanz Ltd reserve the right to alter or update information at any time without prior notice and it is the responsibility of the designer, project manager or Sto contractor to insure they have and use the current Sto details and specifications on site.





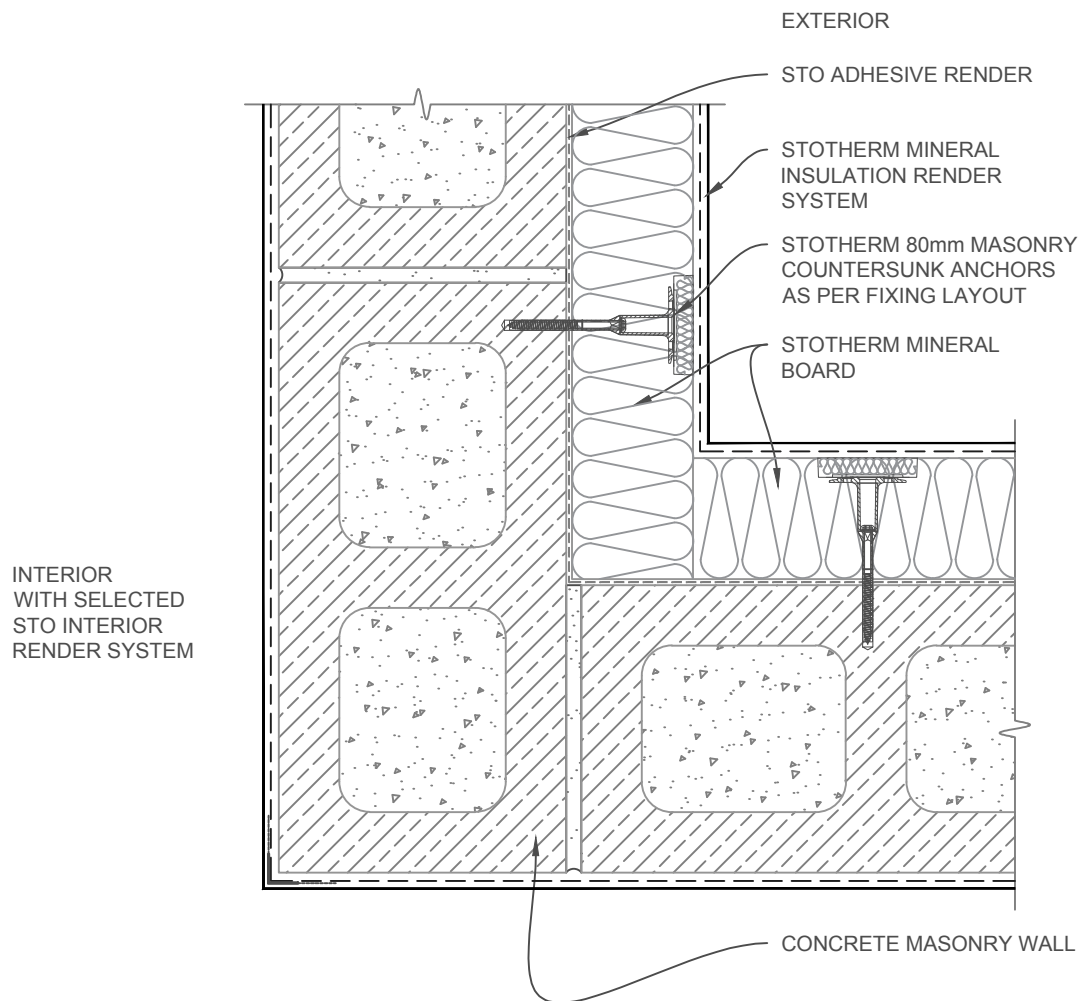




SCALE 1:5

STOTHERM MINERAL	STOTHERM MINERAL MASONRY INSULATION SYSTEM EXTERNAL CORNER - PLAN VIEW	STMI 300
		2017

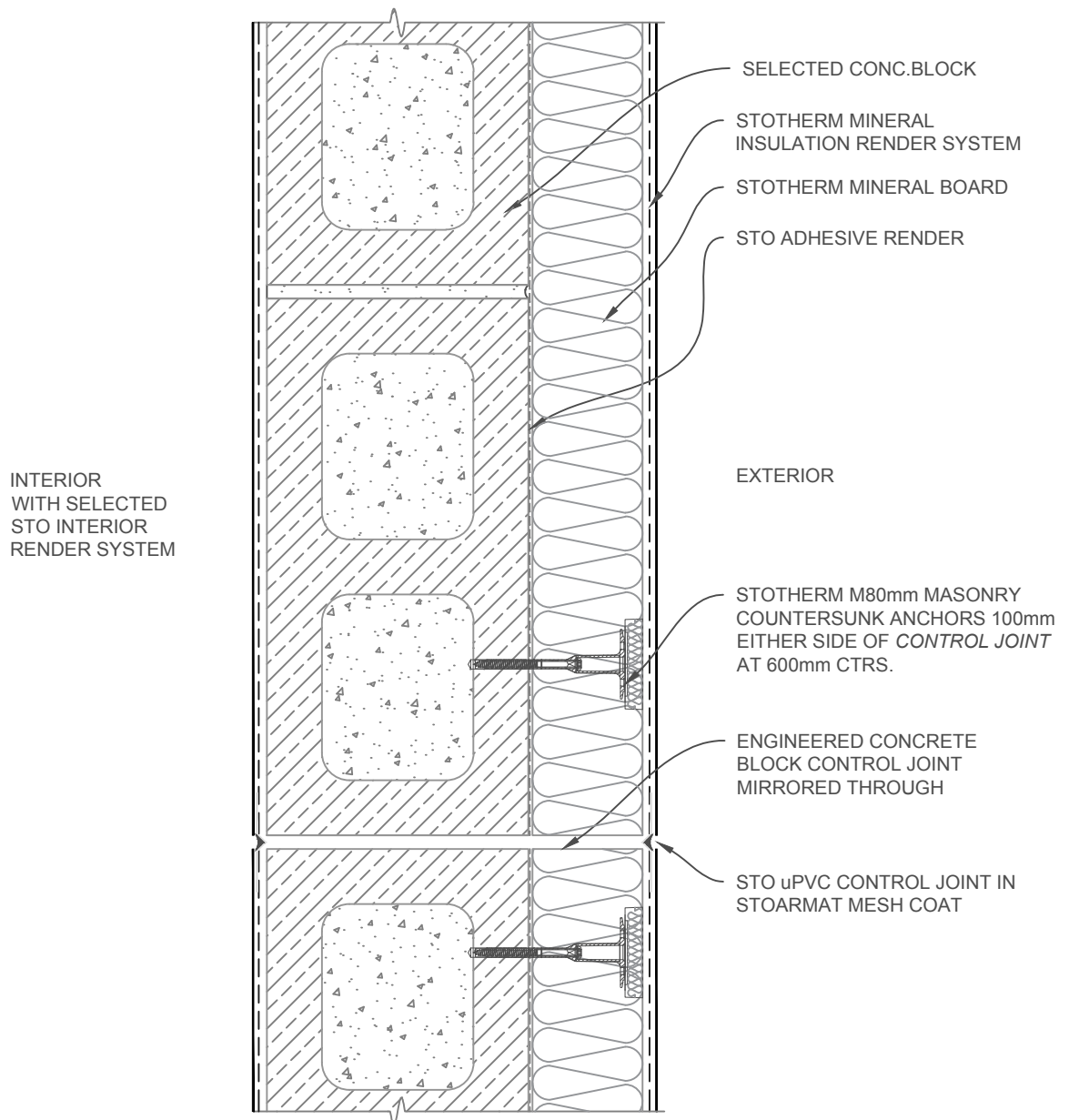
The information contained on this page is based on our experience and research at the date of issue. The detail is for use by Registered Architects, Licensed Designers or Chartered Engineers to assist in developing project details using Sto Systems. Stoanz Ltd reserve the right to alter or update information at any time without prior notice and it is the responsibility of the designer, project manager or Sto contractor to insure they have and use the current Sto details and specifications on site.



SCALE 1:5

<p><b>STOTHERM MINERAL</b></p>	<p><b>STOTHERM MINERAL MASONRY INSULATION SYSTEM</b></p> <p><b>INTERNAL CORNER - PLAN VIEW</b></p>	<p><b>STMI 301</b></p> <p><b>2017</b></p>
--------------------------------	--	---

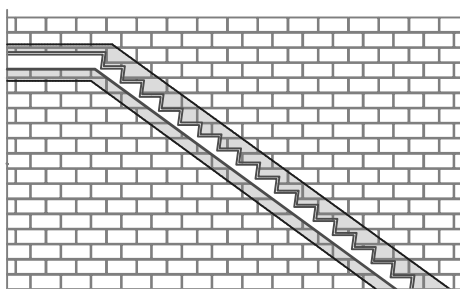
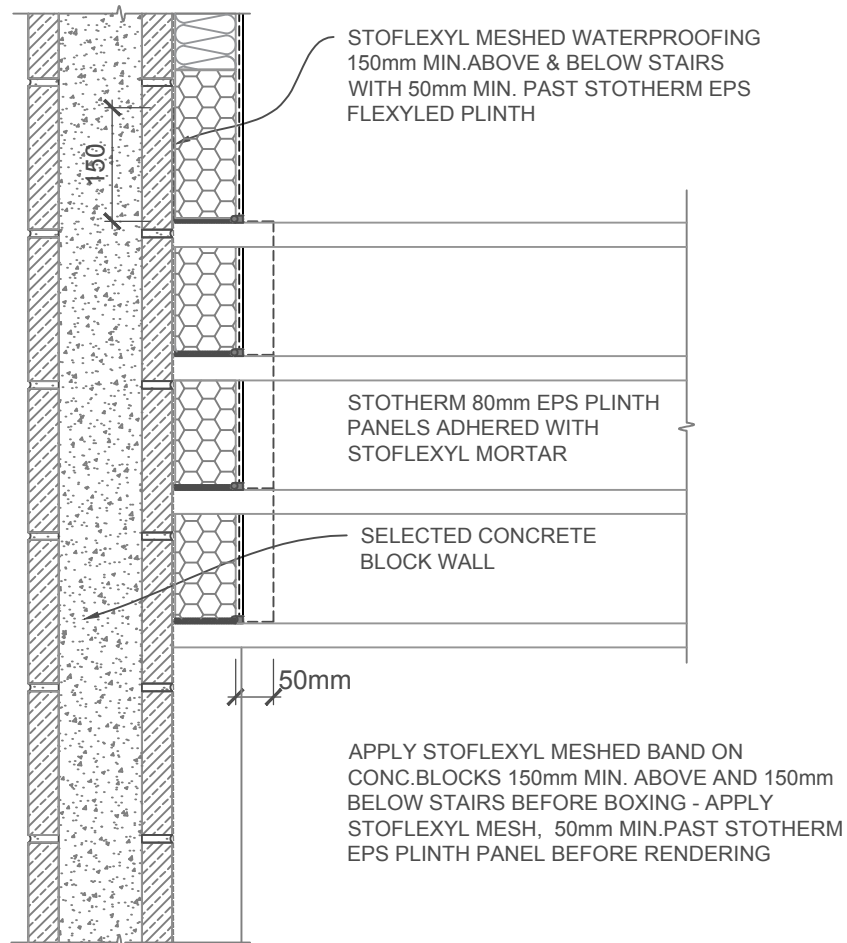
The information contained on this page is based on our experience and research at the date of issue. The detail is for use by Registered Architects, Licensed Designers or Chartered Engineers to assist in developing project details using Sto Systems. Stoanz Ltd reserve the right to alter or update information at any time without prior notice and it is the responsibility of the designer, project manager or Sto contractor to insure they have and use the current Sto details and specifications on site.



SCALE 1:5

<p><b>STOTHERM MINERAL</b></p>	<p><b>STOTHERM MINERAL MASONRY INSULATION SYSTEM</b></p> <p><b>VERTICAL CONTROL JOINT - PLAN VIEW</b></p>	<p><b>STMI 302</b></p> <p><b>2017</b></p>
--------------------------------	---	---

The information contained on this page is based on our experience and research at the date of issue. The detail is for use by Registered Architects, Licensed Designers or Chartered Engineers to assist in developing project details using Sto Systems. Stoanz Ltd reserve the right to alter or update information at any time without prior notice and it is the responsibility of the designer, project manager or Sto contractor to insure they have and use the current Sto details and specifications on site.

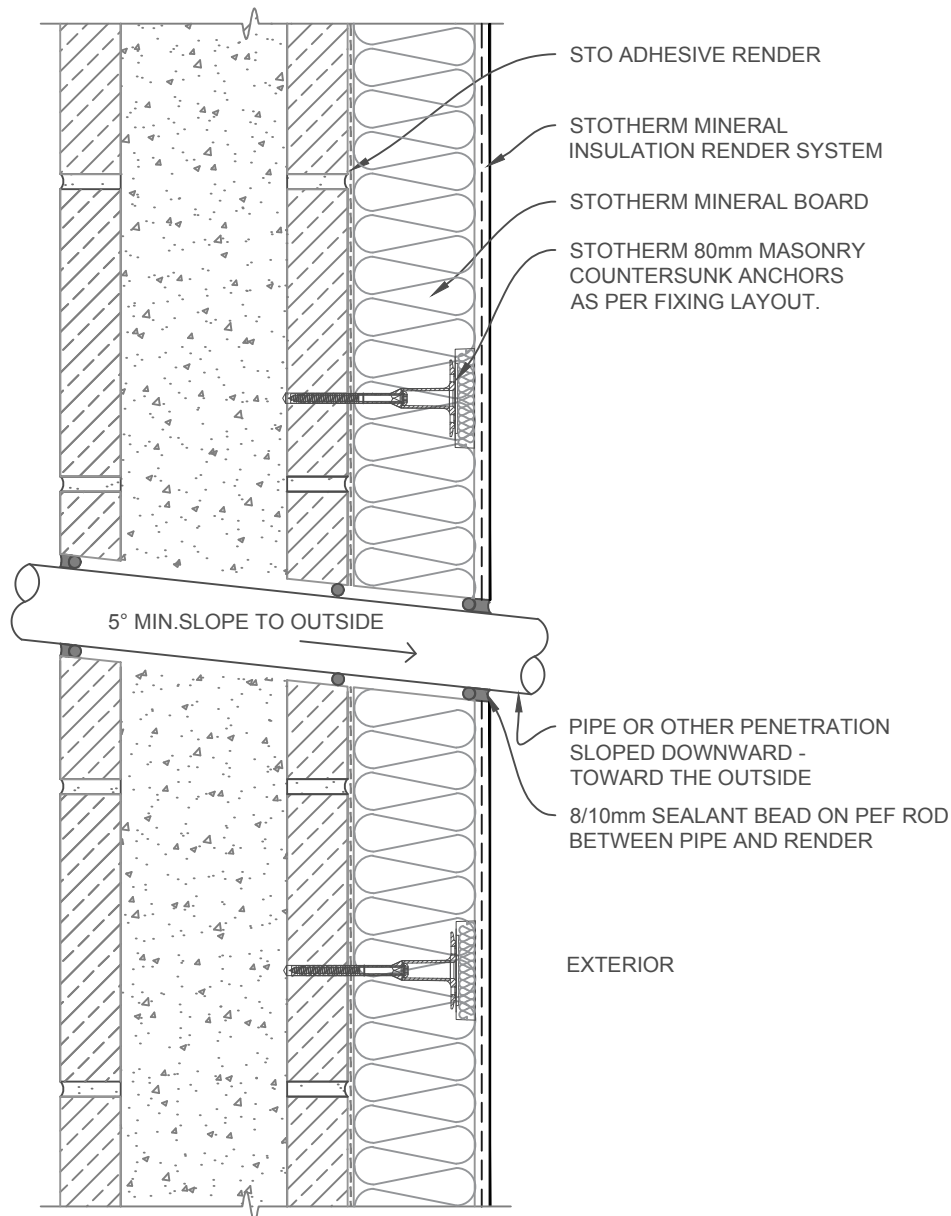


**STOFLEXYL WATERPROOFING MEMBRANE ON**

- WALL CAPS, PARAPETS, BALUSTRADE TOPS
- JOINERY OPENING REBATES INCLUDING INSULATION
- STAIRS AND ITEMS BUTTING INTO OR ONTO MASONRY WALLS
- FOUNDATIONS

STOTHERM MINERAL	STOTHERM MINERAL MASONRY INSULATION SYSTEM	STMI 303
	STAIR WATERPROOFING DETAIL	2017

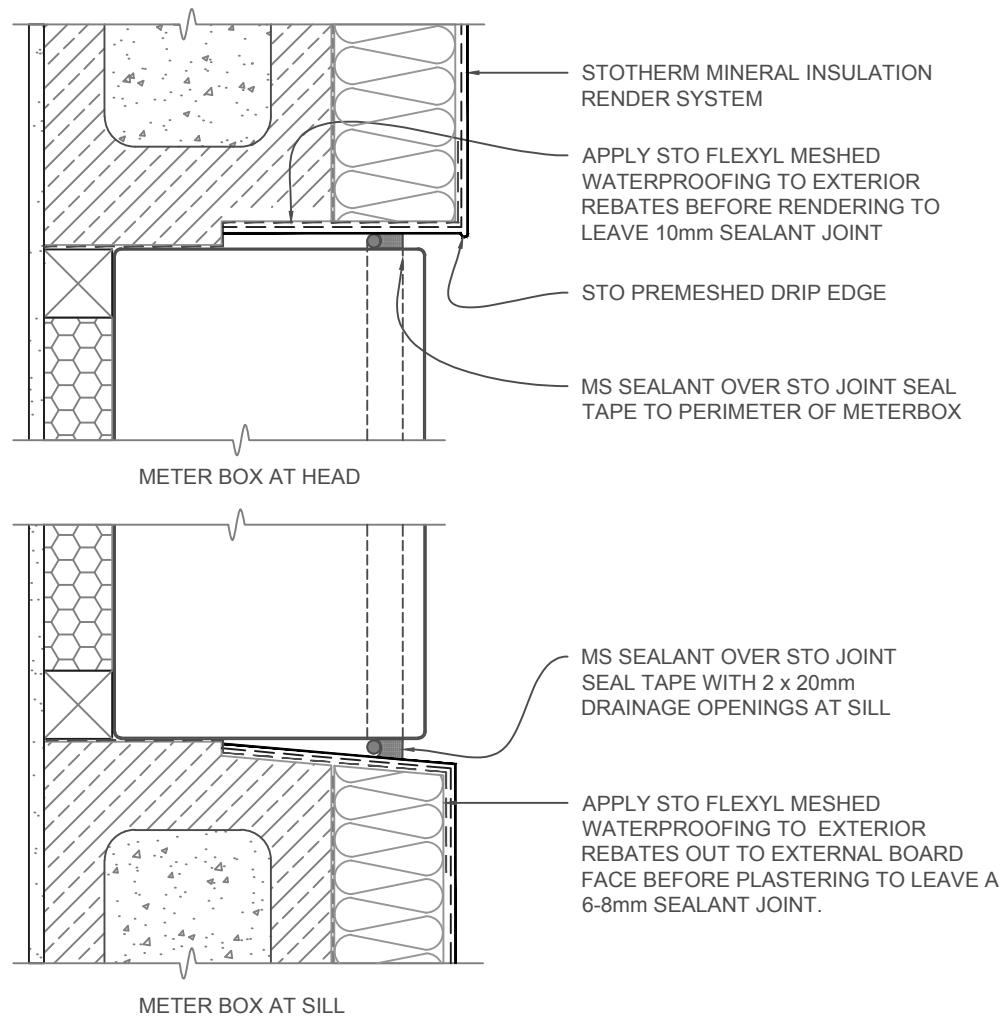
The information contained on this page is based on our experience and research at the date of issue. The detail is for use by Registered Architects, Licensed Designers or Chartered Engineers to assist in developing project details using Sto Systems. Stoanz Ltd reserve the right to alter or update information at any time without prior notice and it is the responsibility of the designer, project manager or Sto contractor to insure they have and use the current Sto details and specifications on site.



SCALE 1:5

STOTHERM MINERAL	STOTHERM MINERAL MASONRY INSULATION SYSTEM PIPE PENETRATION DETAIL (up to 150mm)	STMI 350
		2017

The information contained on this page is based on our experience and research at the date of issue. The detail is for use by Registered Architects, Licensed Designers or Chartered Engineers to assist in developing project details using Sto Systems. Stoanz Ltd reserve the right to alter or update information at any time without prior notice and it is the responsibility of the designer, project manager or Sto contractor to insure they have and use the current Sto details and specifications on site.



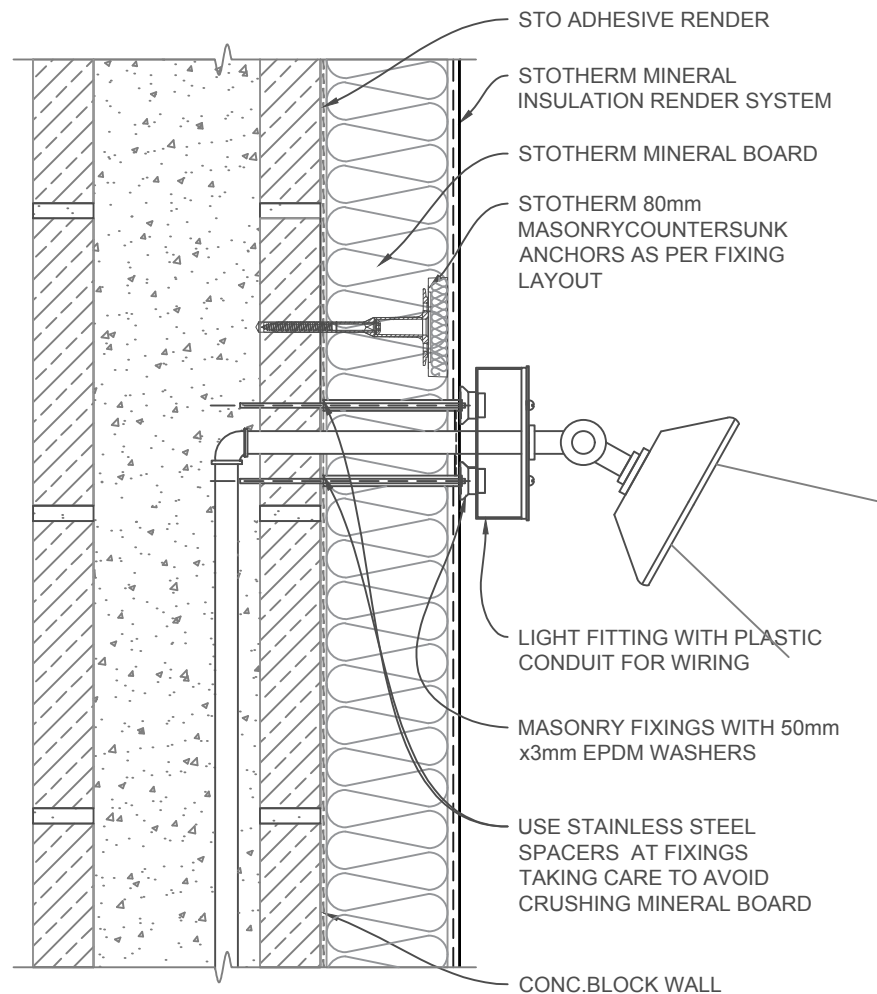
SCALE 1:5

STOTHERM MINERAL	STOTHERM MINERAL MASONRY INSULATION SYSTEM  METER BOX	STMI 351
		2017

The information contained on this page is based on our experience and research at the date of issue. The detail is for use by Registered Architects, Licensed Designers or Chartered Engineers to assist in developing project details using Sto Systems. Stoanz Ltd reserve the right to alter or update information at any time without prior notice and it is the responsibility of the designer, project manager or Sto contractor to insure they have and use the current Sto details and specifications on site.

INTERIOR

EXTERIOR



SCALE 1:5

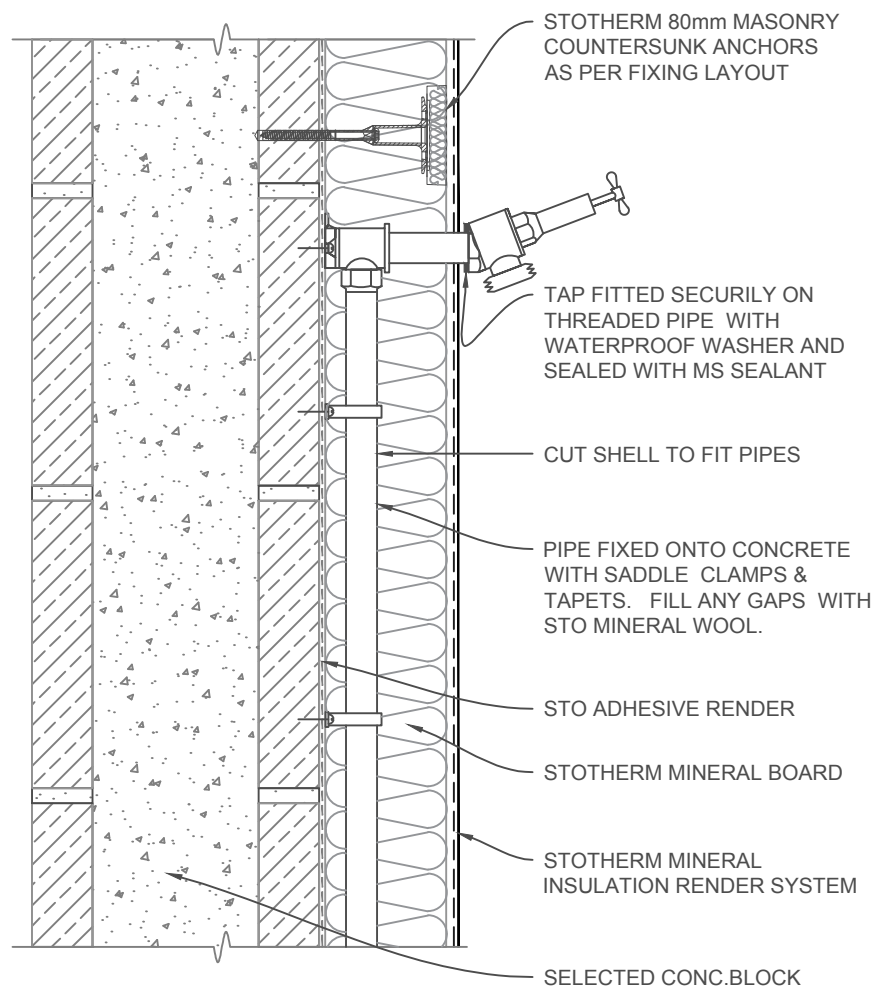
STOTHERM MINERAL	STOTHERM MINERAL MASONRY INSULATION SYSTEM  LIGHT FITTING/FIXING DETAIL	STMI 352
		2017

The information contained on this page is based on our experience and research at the date of issue. The detail is for use by Registered Architects, Licensed Designers or Chartered Engineers to assist in developing project details using Sto Systems. Stoanz Ltd reserve the right to alter or update information at any time without prior notice and it is the responsibility of the designer, project manager or Sto contractor to insure they have and use the current Sto details and specifications on site.



INTERIOR

EXTERIOR



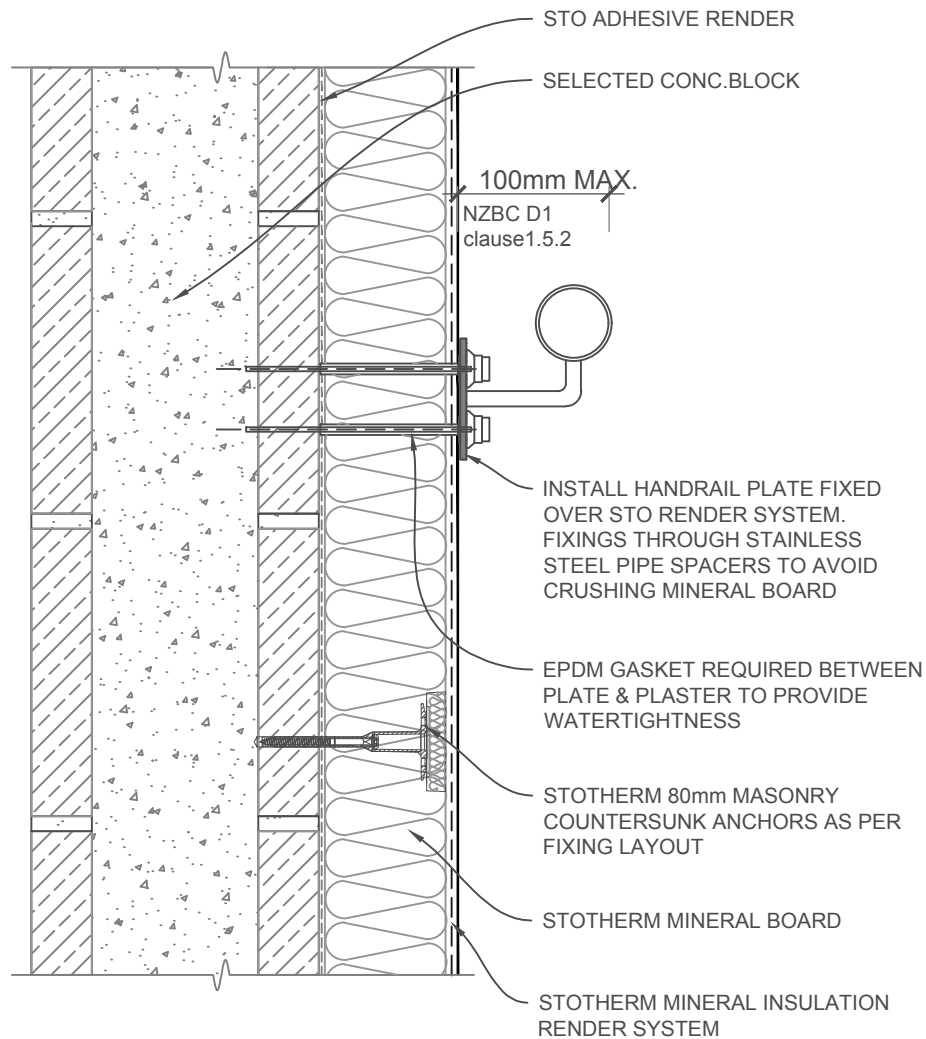
SCALE 1:5

STOTHERM MINERAL	STOTHERM MINERAL MASONRY INSULATION SYSTEM  TAP FITTING/FIXING DETAIL	STMI 353
		2017

The information contained on this page is based on our experience and research at the date of issue. The detail is for use by Registered Architects, Licensed Designers or Chartered Engineers to assist in developing project details using Sto Systems. Stoanz Ltd reserve the right to alter or update information at any time without prior notice and it is the responsibility of the designer, project manager or Sto contractor to insure they have and use the current Sto details and specifications on site.

INTERIOR

EXTERIOR



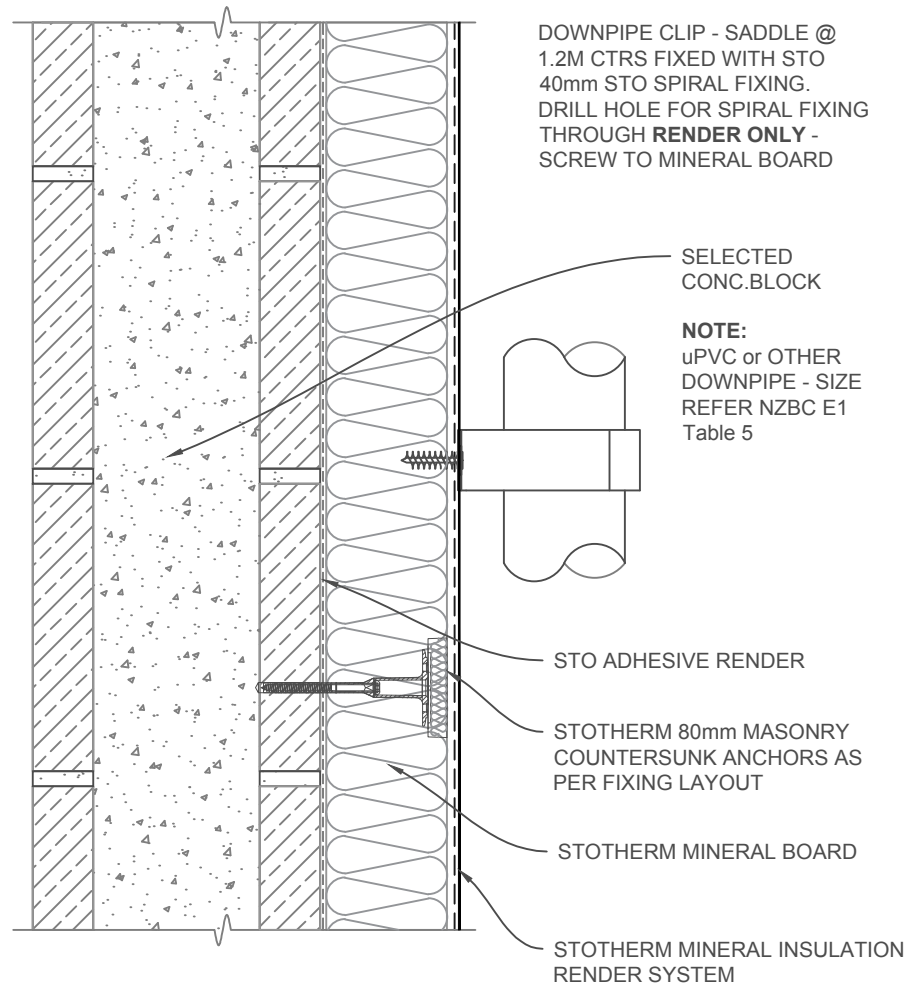
SCALE 1:5

<b>STOTHERM MINERAL</b>	<b>STOTHERM MINERAL MASONRY INSULATION SYSTEM HAND RAIL BRACKET/FIXING DETAIL</b>	<b>STMI 354</b>
		<b>2017</b>

The information contained on this page is based on our experience and research at the date of issue. The detail is for use by Registered Architects, Licensed Designers or Chartered Engineers to assist in developing project details using Sto Systems. Stoanz Ltd reserve the right to alter or update information at any time without prior notice and it is the responsibility of the designer, project manager or Sto contractor to insure they have and use the current Sto details and specifications on site.

INTERIOR

EXTERIOR



**NOTE:**  
STO SPIRAL FIXINGS MAY BE USED TO SUPPORT OTHER LIGHTWEIGHT ITEMS SUCH AS LIGHTS & SECURITY FITTINGS HOWEVER SPIRAL FACE WEIGHT **MUST NOT** EXCEED 8kgs

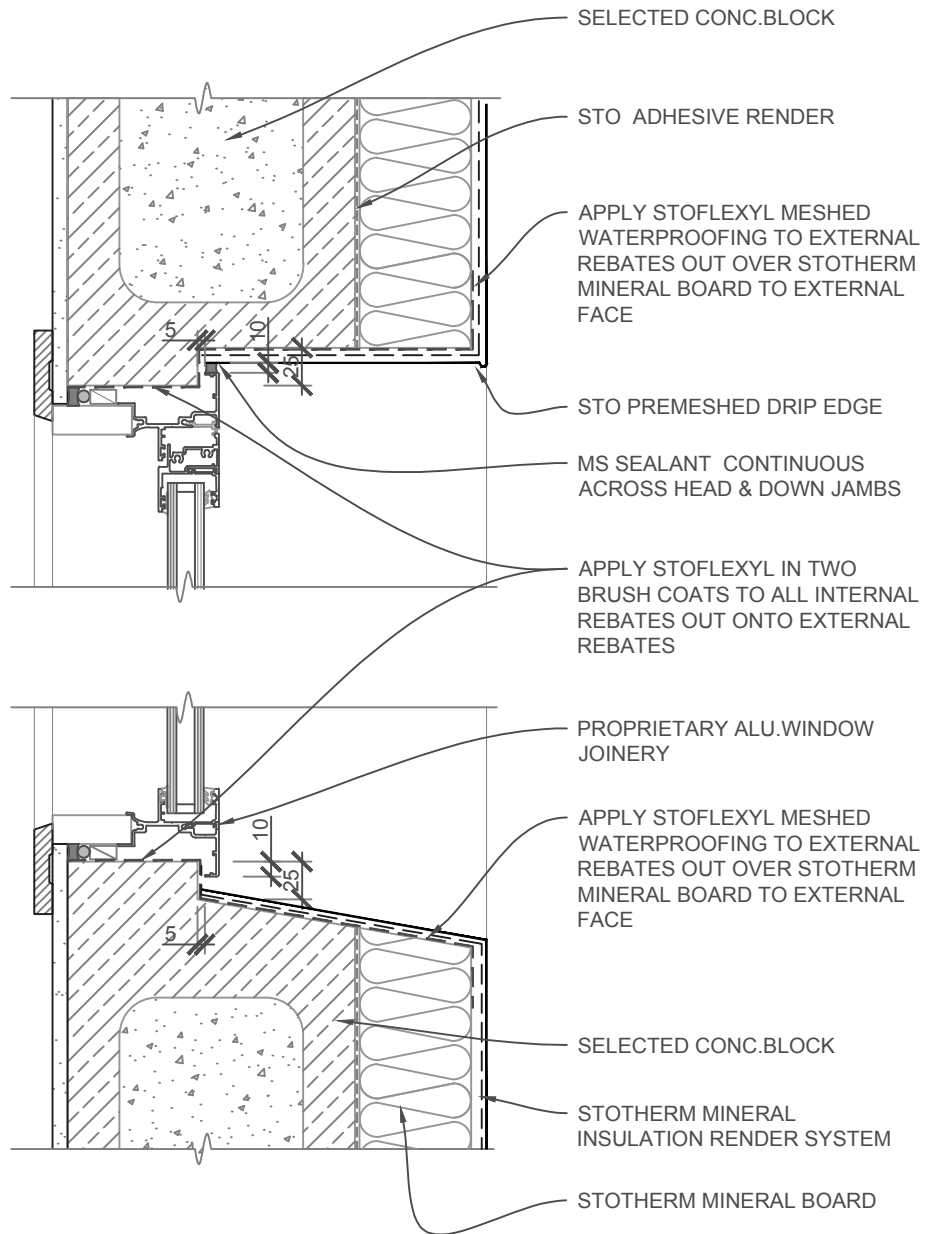
SCALE 1:5

STOTHERM MINERAL	STOTHERM MINERAL MASONRY INSULATION SYSTEM  DOWNPIPE SADDLE FIXING DETAIL	STMI 355
		2017

The information contained on this page is based on our experience and research at the date of issue. The detail is for use by Registered Architects, Licensed Designers or Chartered Engineers to assist in developing project details using Sto Systems. Stoanz Ltd reserve the right to alter or update information at any time without prior notice and it is the responsibility of the designer, project manager or Sto contractor to insure they have and use the current Sto details and specifications on site.



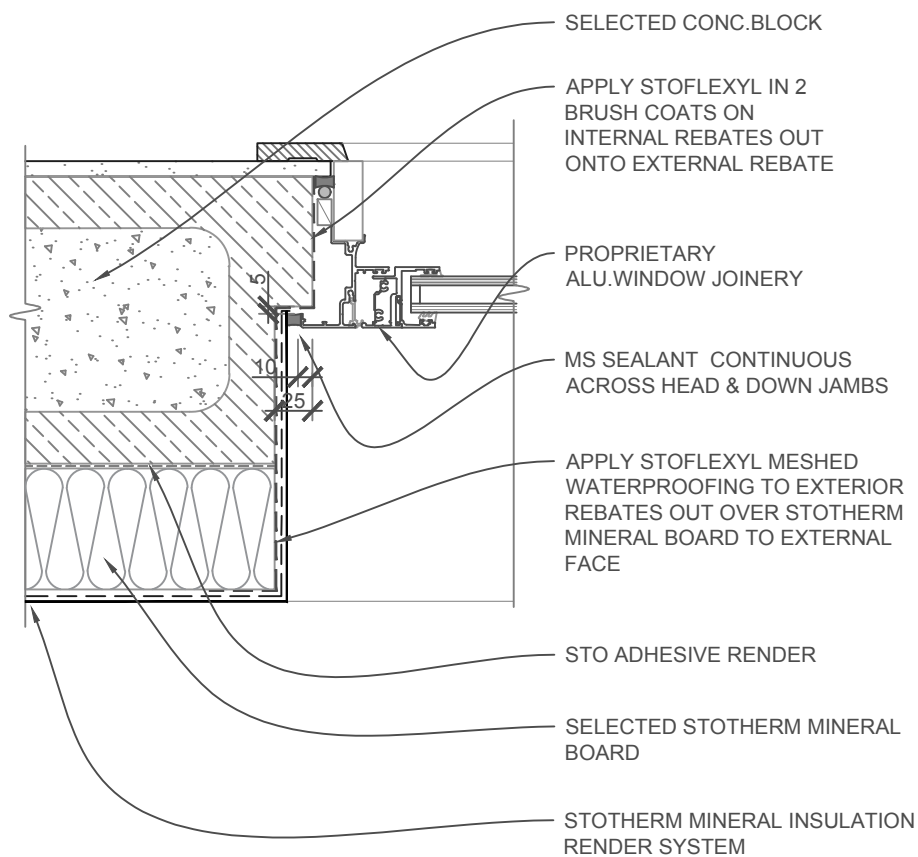
The information contained on this page is based on our experience and research at the date of issue. The detail is for use by Registered Architects, Licensed Designers or Chartered Engineers to assist in developing project details using Sto Systems. Stoanz Ltd reserve the right to alter or update information at any time without prior notice and it is the responsibility of the designer, project manager or Sto contractor to insure they have and use the current Sto details and specifications on site.



SCALE 1:5

STOTHERM MINERAL	STOTHERM MINERAL MASONRY INSULATION SYSTEM  ALUMINIUM JOINERY - HEAD & SILL DETAIL	STMI 400
		2017

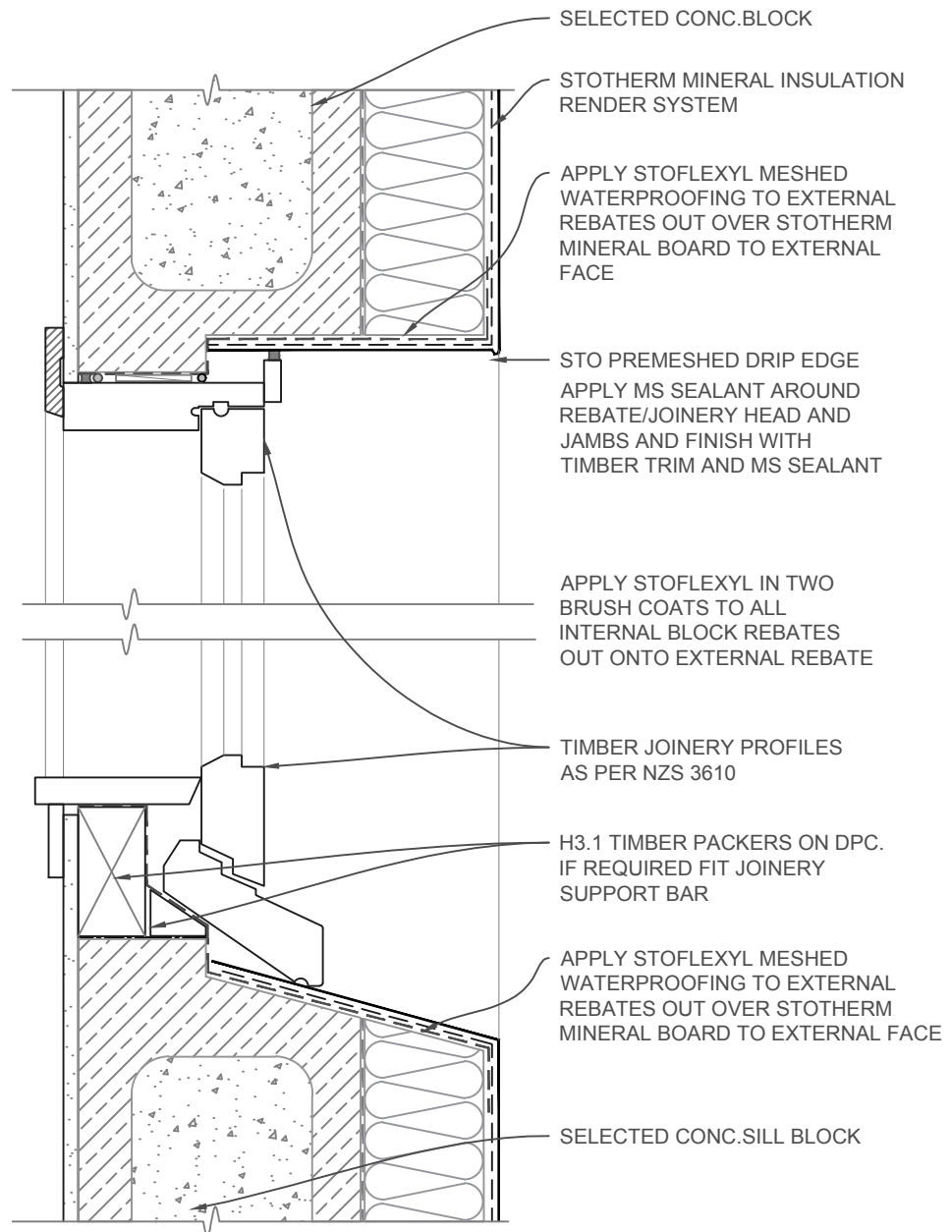
The information contained on this page is based on our experience and research at the date of issue. The detail is for use by Registered Architects, Licensed Designers or Chartered Engineers to assist in developing project details using Sto Systems. Stoanz Ltd reserve the right to alter or update information at any time without prior notice and it is the responsibility of the designer, project manager or Sto contractor to insure they have and use the current Sto details and specifications on site.



SCALE 1:5

STOTHERM MINERAL	STOTHERM MINERAL MASONRY INSULATION SYSTEM  ALUMINIUM JOINERY - JAMB DETAIL	STMI 401
		2017

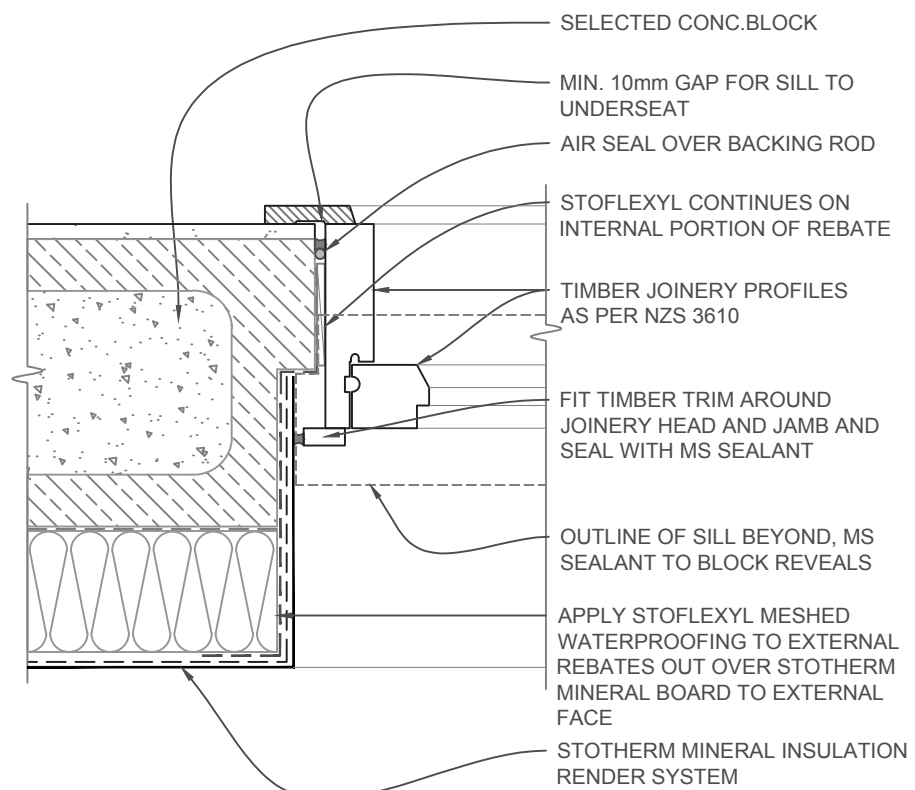
The information contained on this page is based on our experience and research at the date of issue. The detail is for use by Registered Architects, Licensed Designers or Chartered Engineers to assist in developing project details using Sto Systems. Stoanz Ltd reserve the right to alter or update information at any time without prior notice and it is the responsibility of the designer, project manager or Sto contractor to insure they have and use the current Sto details and specifications on site.



SCALE 1:5

<p><b>STOTHERM MINERAL</b></p>	<p><b>STOTHERM MINERAL MASONRY INSULATION SYSTEM</b></p> <p><b>TIMBER JOINERY - HEAD &amp; SILL DETAIL</b></p>	<p><b>STMI 402</b></p> <p><b>2017</b></p>
--------------------------------	--	---

The information contained on this page is based on our experience and research at the date of issue. The detail is for use by Registered Architects, Licensed Designers or Chartered Engineers to assist in developing project details using Sto Systems. Stoanz Ltd reserve the right to alter or update information at any time without prior notice and it is the responsibility of the designer, project manager or Sto contractor to insure they have and use the current Sto details and specifications on site.

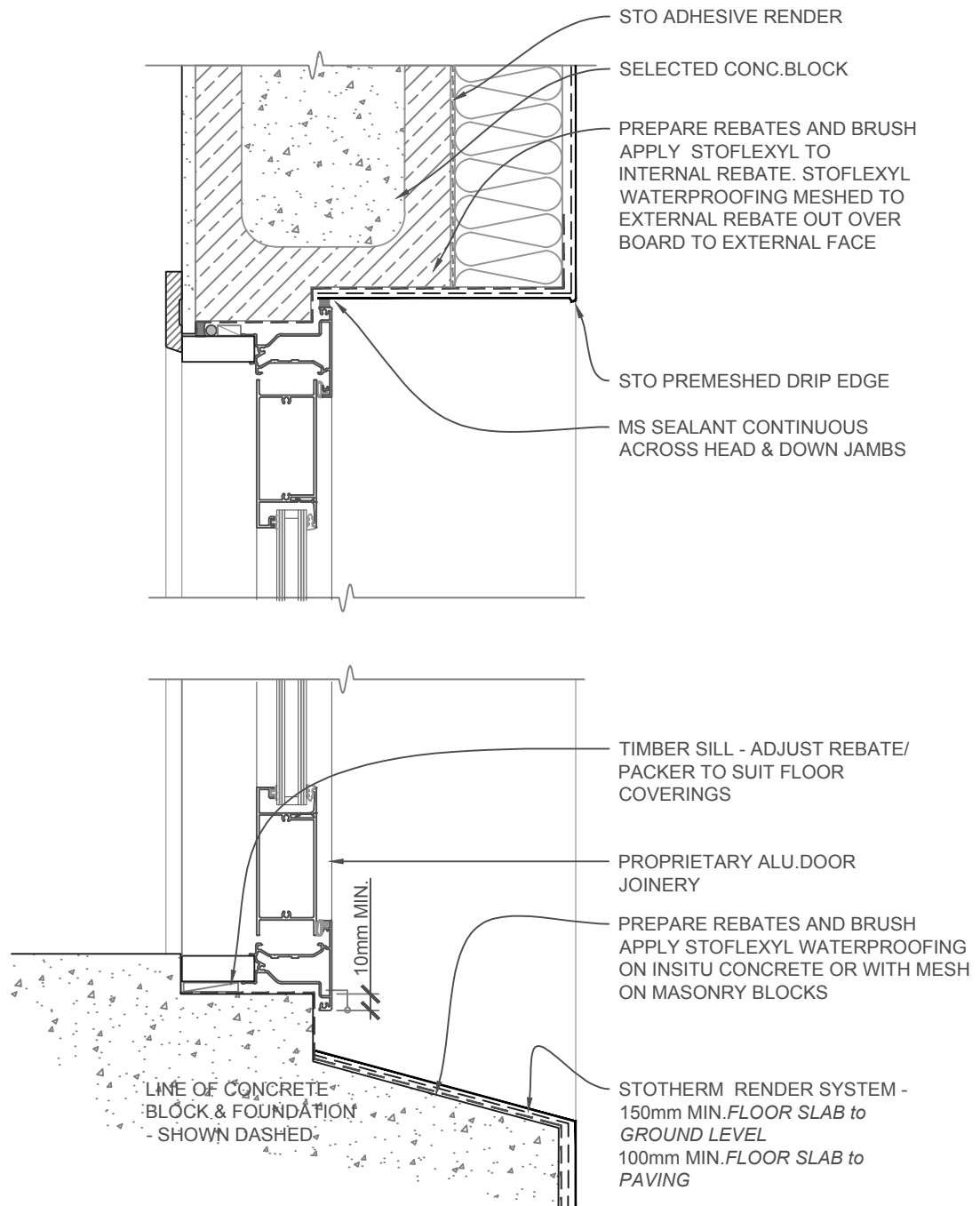


SCALE 1:5

STOTHERM MINERAL	STOTHERM MINERAL MASONRY INSULATION SYSTEM  TIMBER JOINERY - JAMB DETAIL	STMI 403
		2017

The information contained on this page is based on our experience and research at the date of issue. The detail is for use by Registered Architects, Licensed Designers or Chartered Engineers to assist in developing project details using Sto Systems. Stoanz Ltd reserve the right to alter or update information at any time without prior notice and it is the responsibility of the designer, project manager or Sto contractor to insure they have and use the current Sto details and specifications on site.

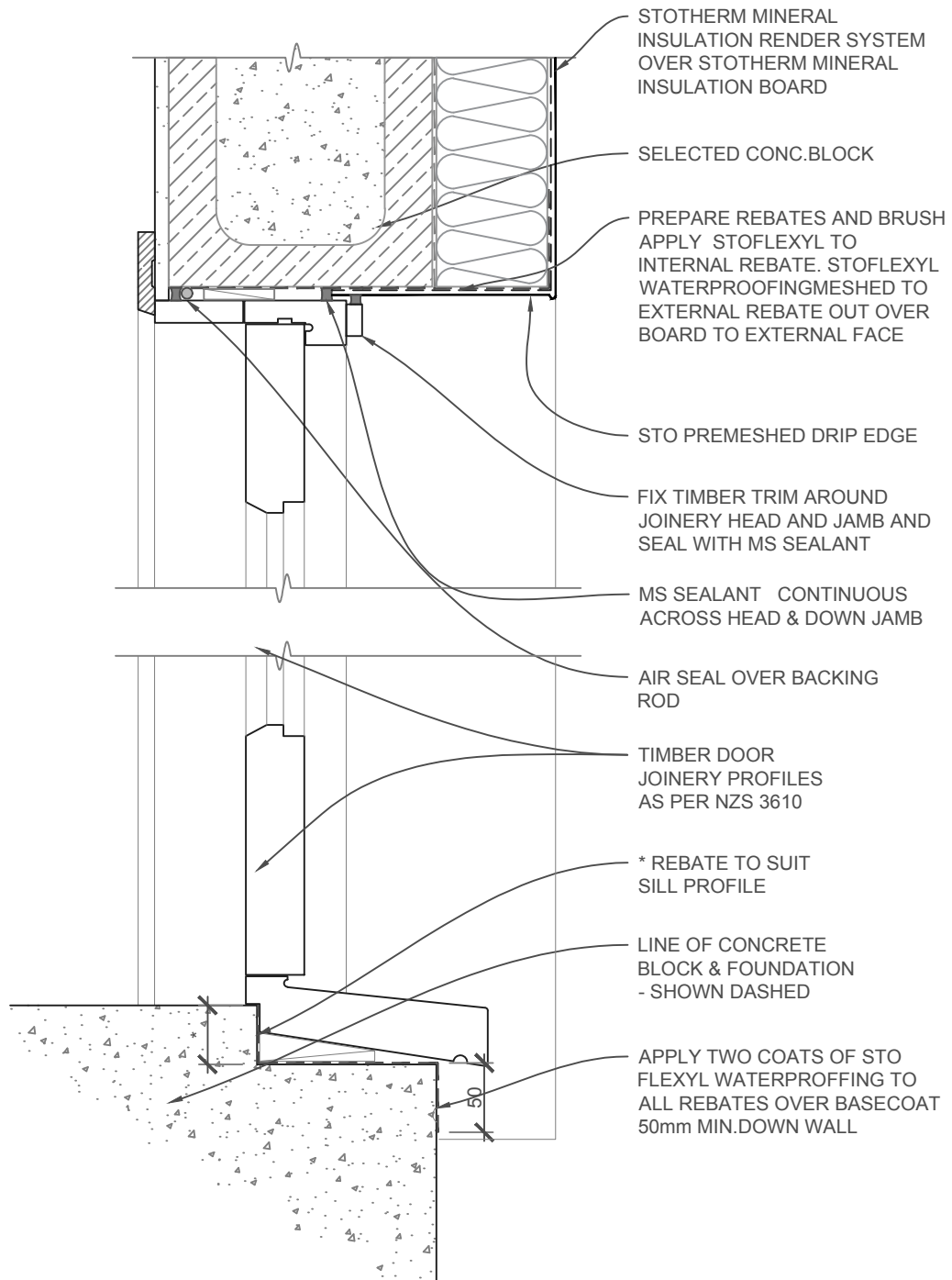




SCALE 1:5

STOTHERM MINERAL	STOTHERM MINERAL MASONRY INSULATION SYSTEM ALU.JOINERY-DOOR HEAD & THRESHOLD DETAIL	STMI 404
		2017

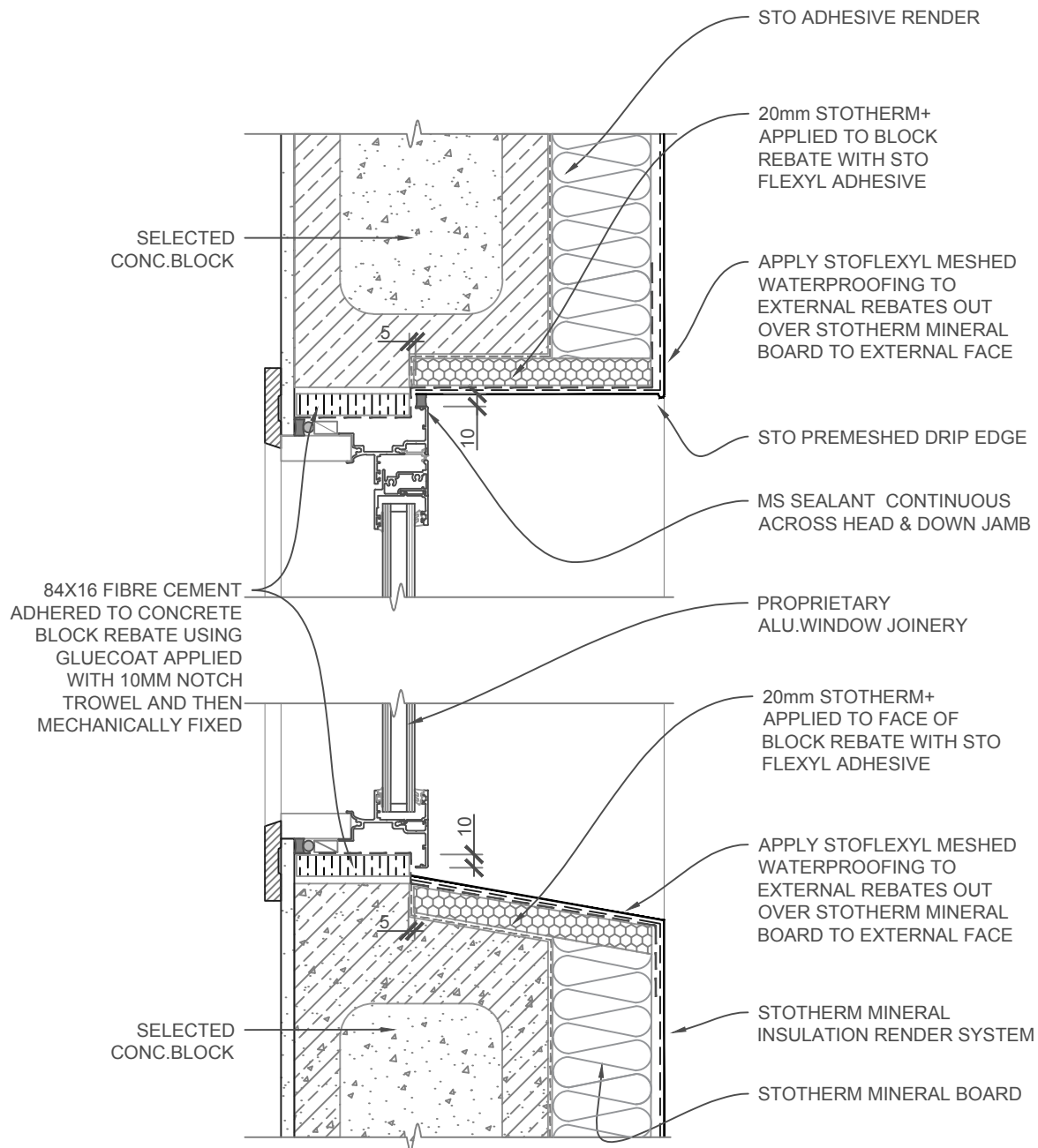
The information contained on this page is based on our experience and research at the date of issue. The detail is for use by Registered Architects, Licensed Designers or Chartered Engineers to assist in developing project details using Sto Systems. Stoanz Ltd reserve the right to alter or update information at any time without prior notice and it is the responsibility of the designer, project manager or Sto contractor to insure they have and use the current Sto details and specifications on site.



SCALE 1:5

STOTHERM MINERAL	STOTHERM MINERAL MASONRY INSULATION SYSTEM TIMBER DOOR JOINERY - HEAD & SILL DETAIL	STMI 405
		2017

The information contained on this page is based on our experience and research at the date of issue. The detail is for use by Registered Architects, Licensed Designers or Chartered Engineers to assist in developing project details using Sto Systems. Stoanz Ltd reserve the right to alter or update information at any time without prior notice and it is the responsibility of the designer, project manager or Sto contractor to insure they have and use the current Sto details and specifications on site.

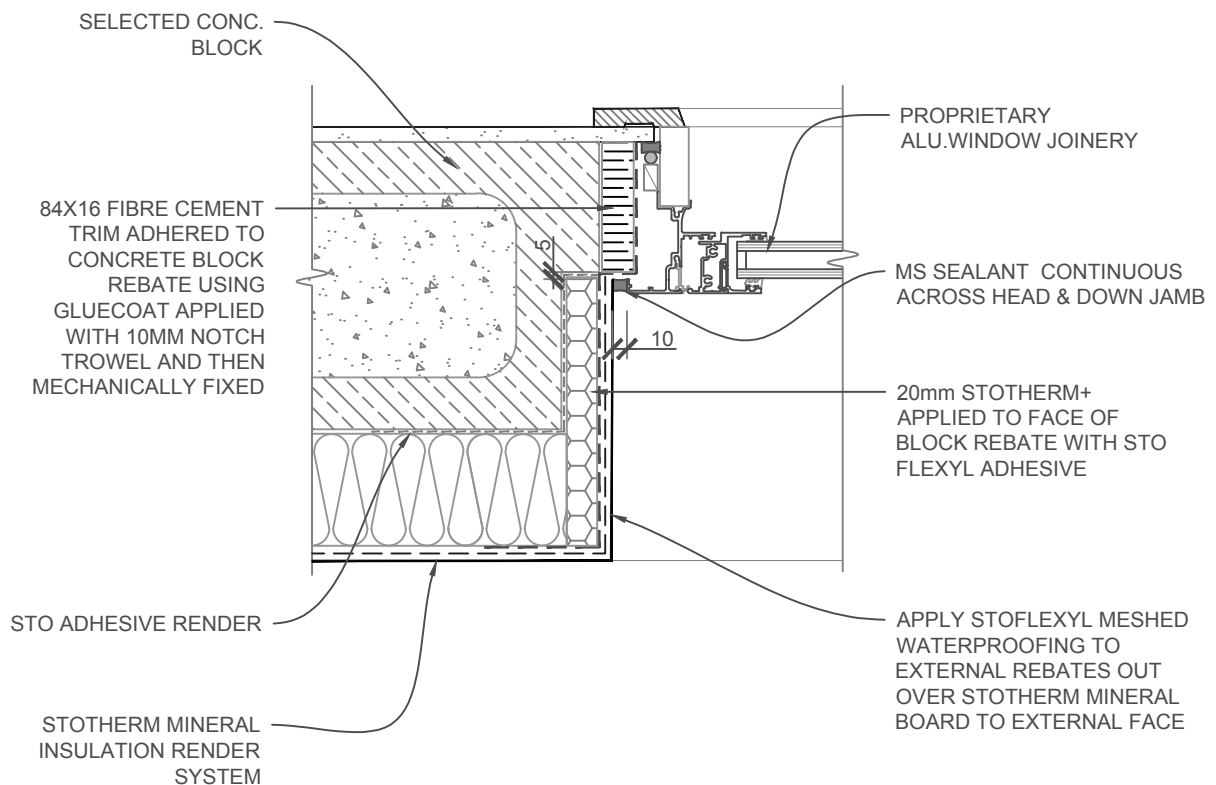


NOTE: FIBRE CEMENT FACINGS AVAILABLE FROM JAMES HARDIE

SCALE 1:5

<b>STOTHERM MINERAL</b>	<b>STOTHERM MINERAL MASONRY INSULATION SYSTEM</b>  20mm POLYSTYRENE TO RECESS ALU. JOINERY - HEAD & SILL DETAIL	<b>STMI 406</b>
		<b>2017</b>

The information contained on this page is based on our experience and research at the date of issue. The detail is for use by Registered Architects, Licensed Designers or Chartered Engineers to assist in developing project details using Sto Systems. Stoanz Ltd reserve the right to alter or update information at any time without prior notice and it is the responsibility of the designer, project manager or Sto contractor to insure they have and use the current Sto details and specifications on site.



NOTE: FIBRE CEMENT FACINGS AVAILABLE FROM JAMES HARDIE

SCALE 1:5

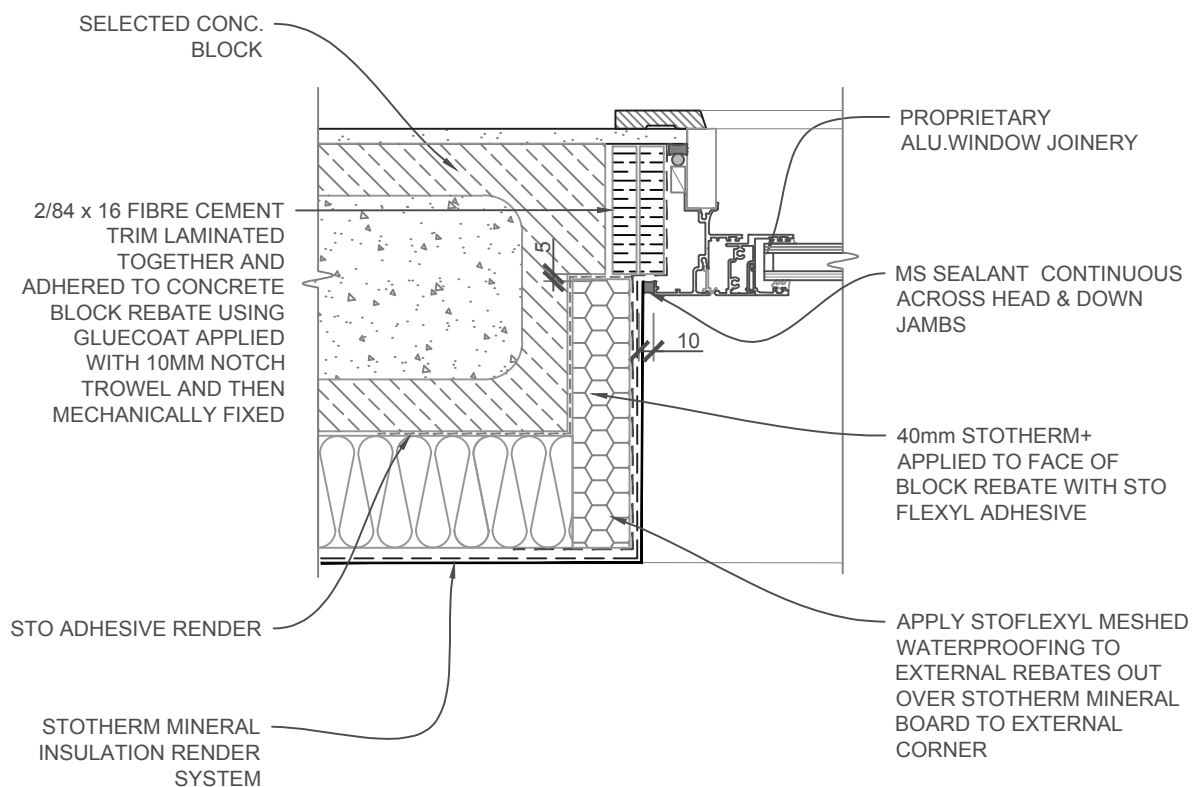
<b>STOTHERM MINERAL</b>	<b>STOTHERM MINERAL MASONRY INSULATION SYSTEM</b>  20mm POLYSTYRENE TO RECESS ALU. JOINERY - JAMB DETAIL	<b>STMI 407</b>
		<b>2017</b>

The information contained on this page is based on our experience and research at the date of issue. The detail is for use by Registered Architects, Licensed Designers or Chartered Engineers to assist in developing project details using Sto Systems. Stoanz Ltd reserve the right to alter or update information at any time without prior notice and it is the responsibility of the designer, project manager or Sto contractor to insure they have and use the current Sto details and specifications on site.



2017

The information contained on this page is based on our experience and research at the date of issue. The detail is for use by Registered Architects, Licensed Designers or Chartered Engineers to assist in developing project details using Sto Systems. Stoanz Ltd reserve the right to alter or update information at any time without prior notice and it is the responsibility of the designer, project manager or Sto contractor to insure they have and use the current Sto details and specifications on site.

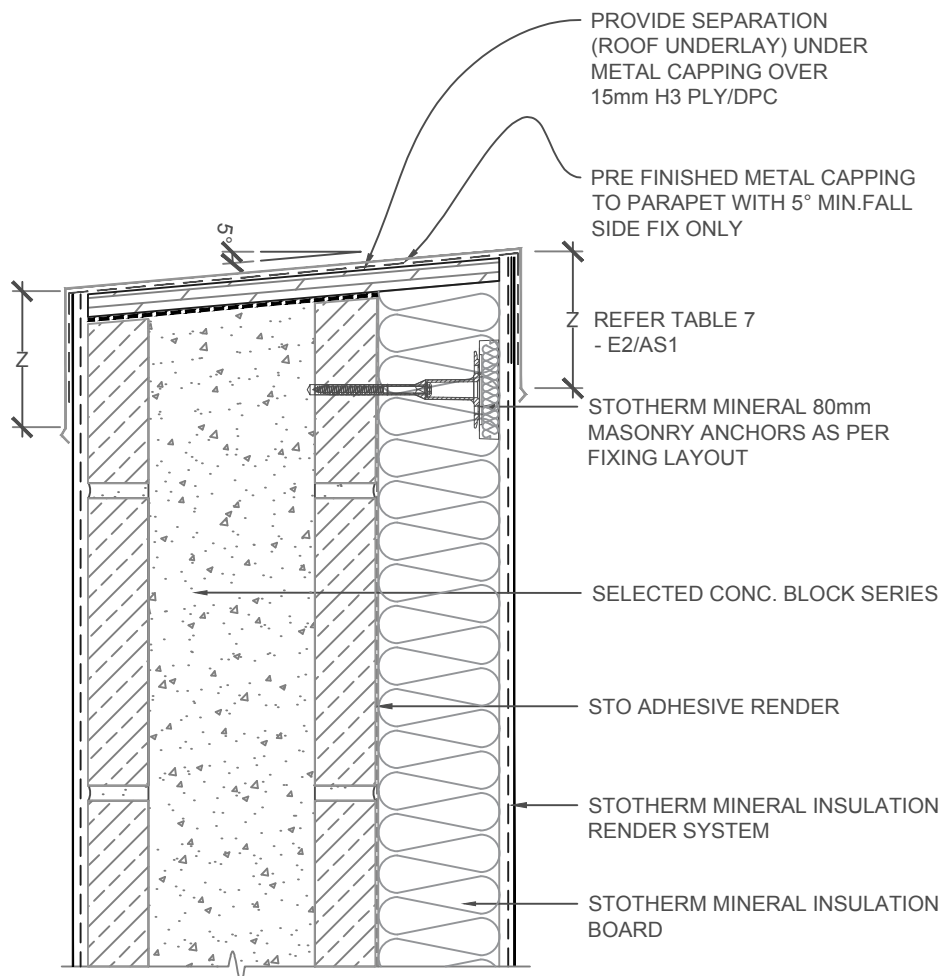


NOTE: FIBRE CEMENT FACINGS AVAILABLE FROM JAMES HARDIE

SCALE 1:5

<b>STOTHERM MINERAL</b>	<b>STOTHERM MINERAL MASONRY INSULATION SYSTEM</b>  40mm POLYSTYRENE TO RECESS ALU. JOINERY - JAMB DETAIL	<b>STMI 409</b>
		<b>2017</b>

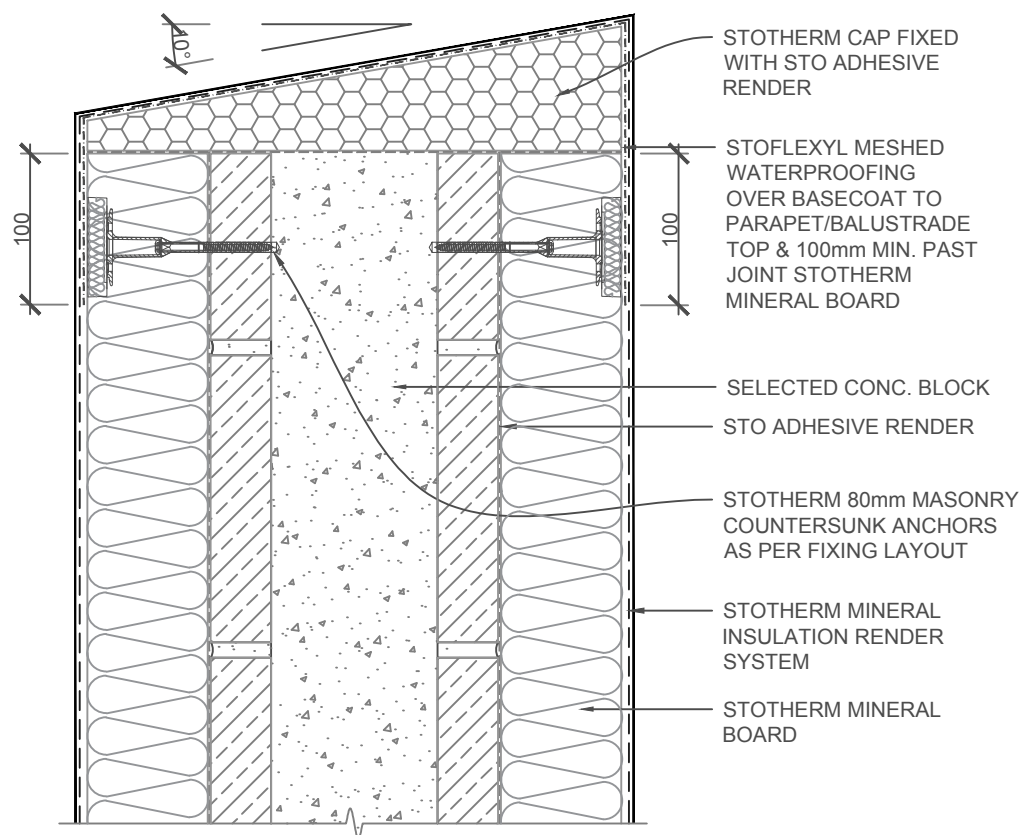
The information contained on this page is based on our experience and research at the date of issue. The detail is for use by Registered Architects, Licensed Designers or Chartered Engineers to assist in developing project details using Sto Systems. Stoanz Ltd reserve the right to alter or update information at any time without prior notice and it is the responsibility of the designer, project manager or Sto contractor to insure they have and use the current Sto details and specifications on site.



SCALE 1:5

STOTHERM MINERAL	STOTHERM MINERAL MASONRY INSULATION SYSTEM  PARAPET/METAL FLASHING DETAIL	STMI 500
		2017

The information contained on this page is based on our experience and research at the date of issue. The detail is for use by Registered Architects, Licensed Designers or Chartered Engineers to assist in developing project details using Sto Systems. Stoanz Ltd reserve the right to alter or update information at any time without prior notice and it is the responsibility of the designer, project manager or Sto contractor to insure they have and use the current Sto details and specifications on site.

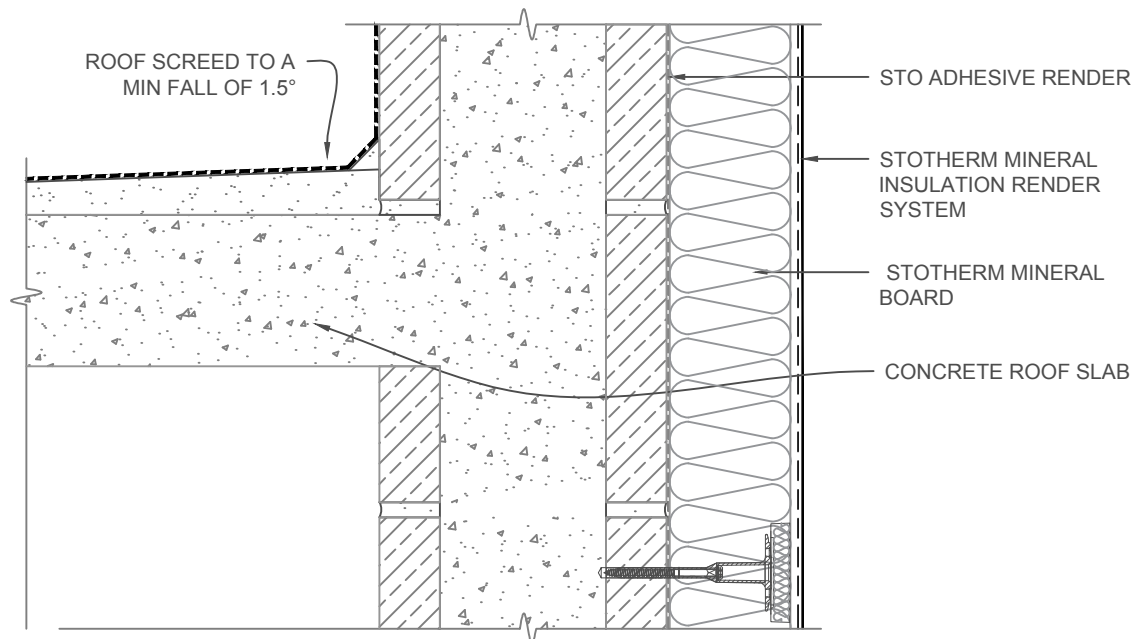
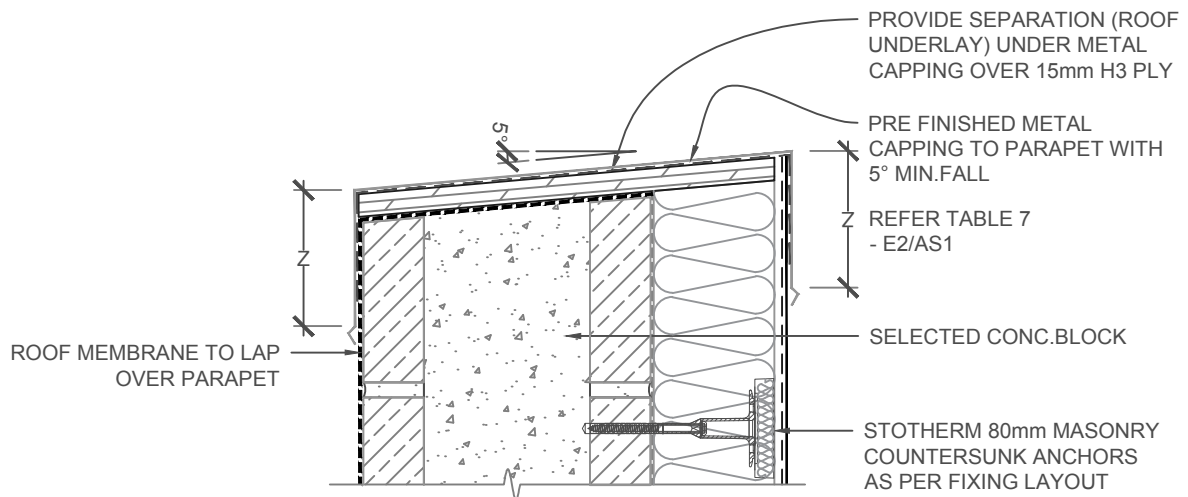


SCALE 1:5

STOTHERM MINERAL	STOTHERM MINERAL MASONRY INSULATION SYSTEM  RENDERED PARAPET/BALUSTRADE DETAIL	STMI 501
		2017

The information contained on this page is based on our experience and research at the date of issue. The detail is for use by Registered Architects, Licensed Designers or Chartered Engineers to assist in developing project details using Sto Systems. Stoanz Ltd reserve the right to alter or update information at any time without prior notice and it is the responsibility of the designer, project manager or Sto contractor to insure they have and use the current Sto details and specifications on site.

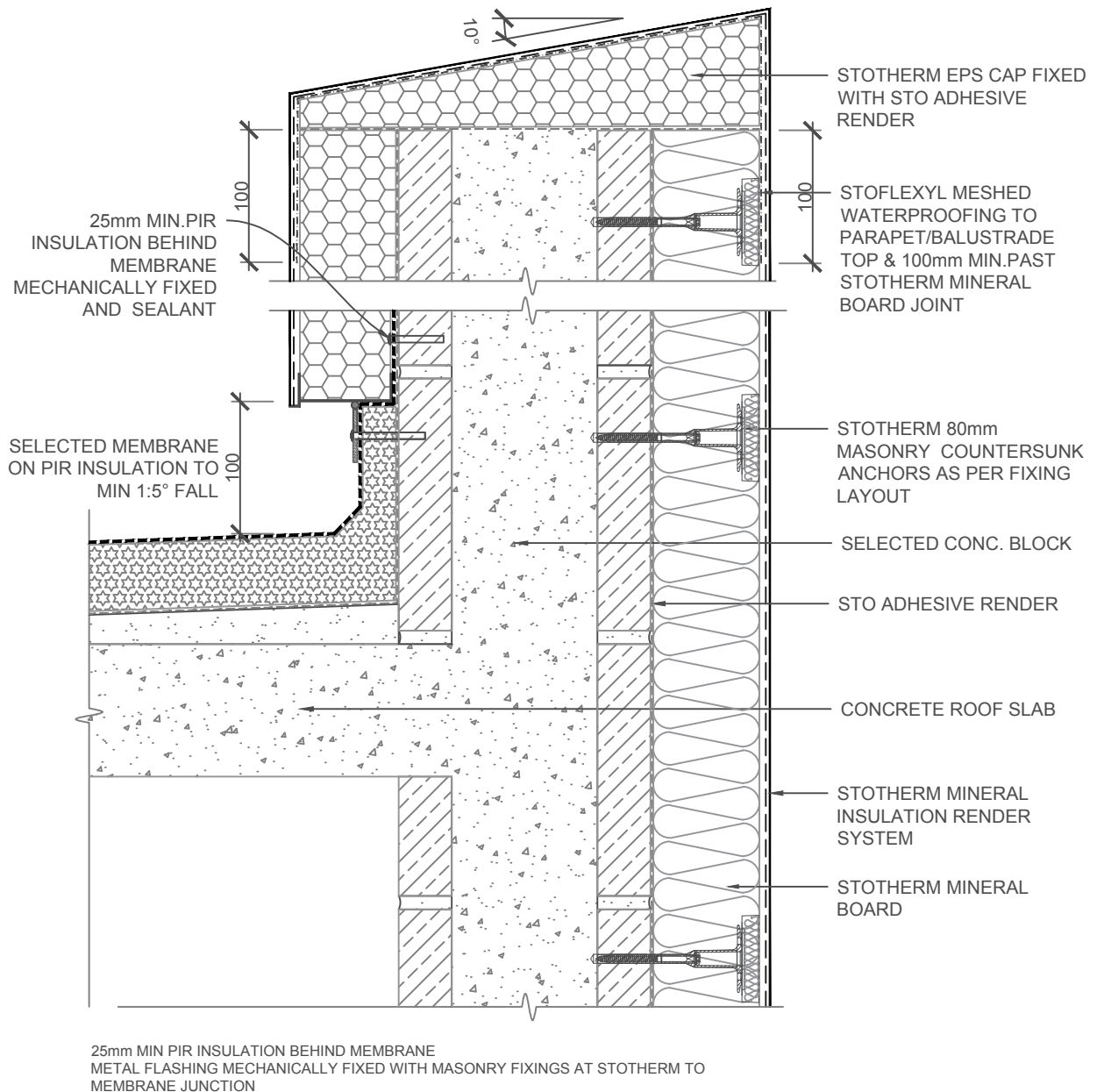




SCALE 1:5

STOTHERM MINERAL	STOTHERM MINERAL MASONRY INSULATION SYSTEM PARAPET/ROOF/WALL DETAIL	STMI 502 2017
------------------	--	------------------

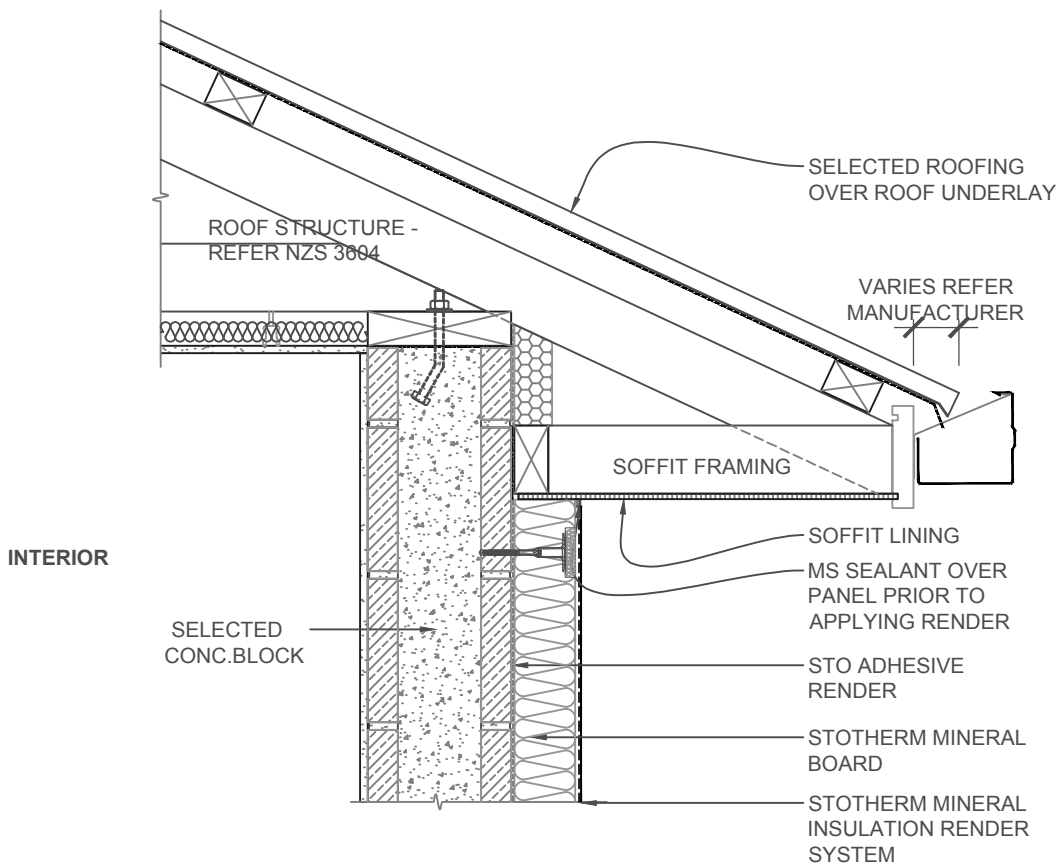
The information contained on this page is based on our experience and research at the date of issue. The detail is for use by Registered Architects, Licensed Designers or Chartered Engineers to assist in developing project details using Sto Systems. Stoanz Ltd reserve the right to alter or update information at any time without prior notice and it is the responsibility of the designer, project manager or Sto contractor to insure they have and use the current Sto details and specifications on site.



SCALE 1:5

STOTHERM MINERAL	STOTHERM MINERAL MASONRY INSULATION SYSTEM  INSULATED ROOF / DECK TO WALLS	STMI 503
		2017

The information contained on this page is based on our experience and research at the date of issue. The detail is for use by Registered Architects, Licensed Designers or Chartered Engineers to assist in developing project details using Sto Systems. Stoanz Ltd reserve the right to alter or update information at any time without prior notice and it is the responsibility of the designer, project manager or Sto contractor to insure they have and use the current Sto details and specifications on site.



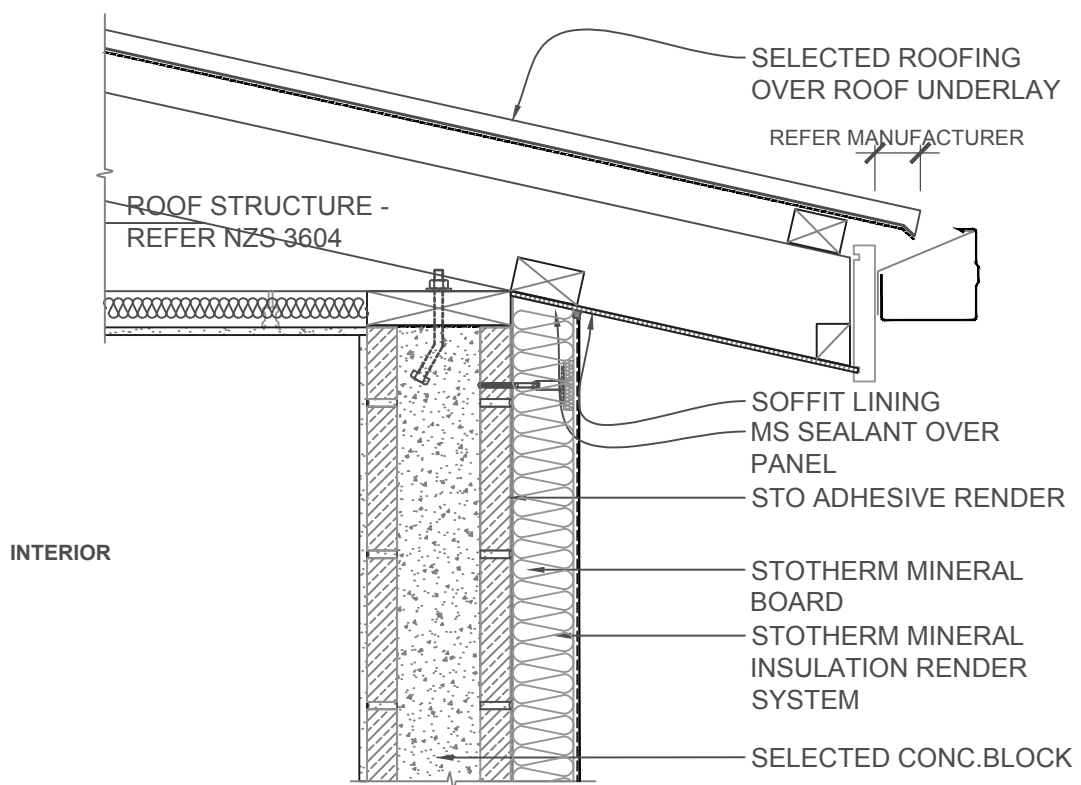
NOTE: EAVE FLASHING **REQUIRED** WHERE

- ROOF SLOPE IS 10° or LESS
- SOFFIT WIDTH IS 100mm or LESS
- WIND ZONES ARE VERY HIGH or EXTRA HIGH

SCALE 1:10

STOTHERM MINERAL	STOTHERM MINERAL MASONRY INSULATION SYSTEM  FLAT SOFFIT/WALL JUNCTION	STMI 600
		2017

The information contained on this page is based on our experience and research at the date of issue. The detail is for use by Registered Architects, Licensed Designers or Chartered Engineers to assist in developing project details using Sto Systems. Stoanz Ltd reserve the right to alter or update information at any time without prior notice and it is the responsibility of the designer, project manager or Sto contractor to insure they have and use the current Sto details and specifications on site.



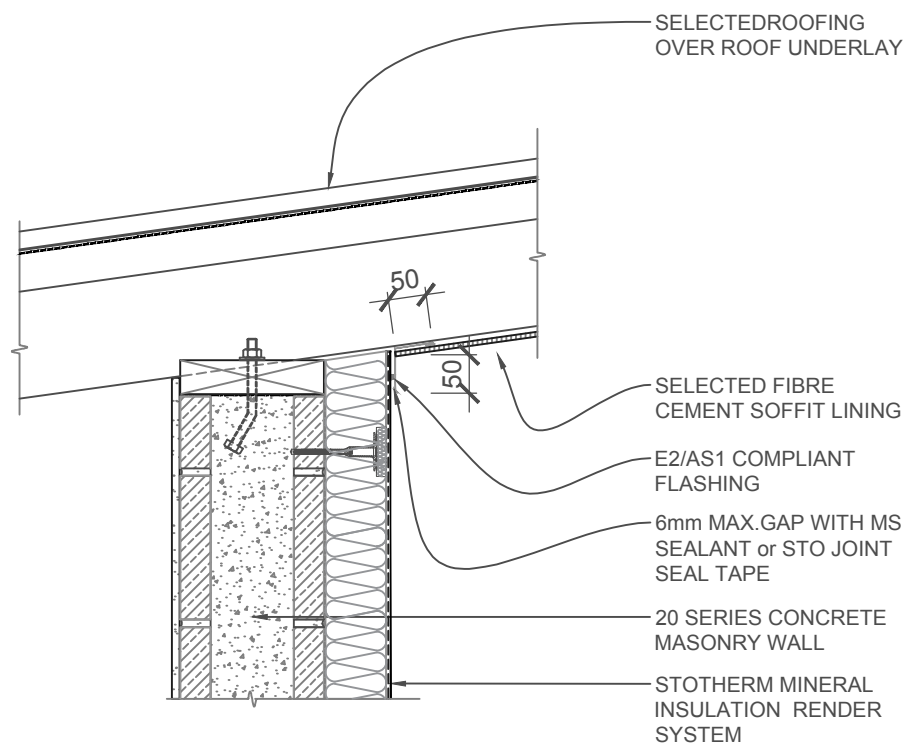
NOTE: EAVE FLASHING **REQUIRED** WHERE

- ROOF SLOPE IS 10° or LESS
- SOFFIT WIDTH IS 100mm or LESS
- WIND ZONES ARE VERY HIGH or EXTRA HIGH

SCALE 1:10

STOTHERM MINERAL	STOTHERM MINERAL MASONRY INSULATION SYSTEM  RAKING SOFFIT/WALL JUNCTION	STMI 601
		2017

The information contained on this page is based on our experience and research at the date of issue. The detail is for use by Registered Architects, Licensed Designers or Chartered Engineers to assist in developing project details using Sto Systems. Stoanz Ltd reserve the right to alter or update information at any time without prior notice and it is the responsibility of the designer, project manager or Sto contractor to insure they have and use the current Sto details and specifications on site.



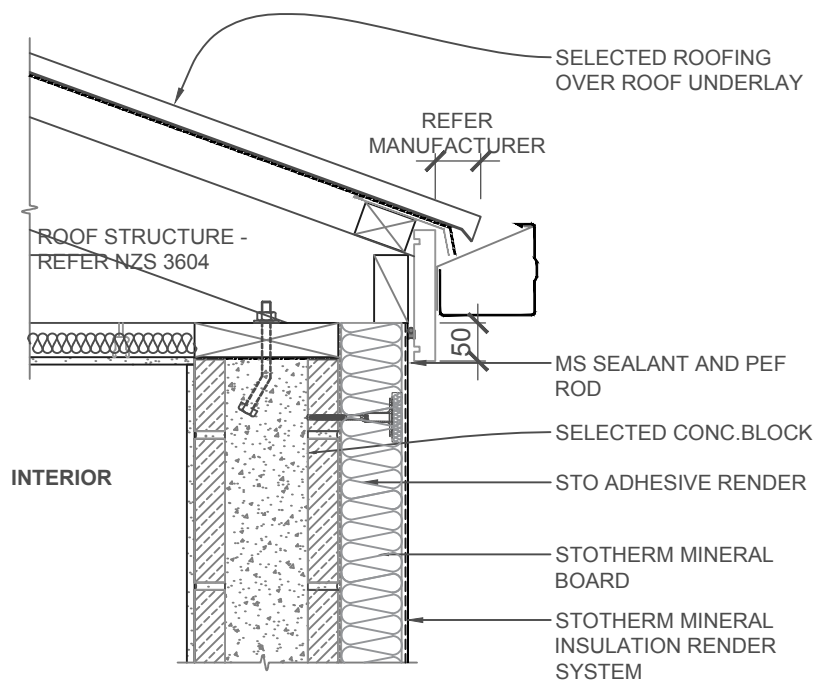
**NOTE:**

- MAX. ANGLE OF SOFFIT RESTRICTED TO BETWEEN 91° - 115°
- SOFFITS ARE FIXED AFTER RENDERING

SCALE 1:10

STOTHERM MINERAL	STOTHERM MINERAL MASONRY INSULATION SYSTEM RAKING SOFFIT (REVERSED)	STMI 602
		2017

The information contained on this page is based on our experience and research at the date of issue. The detail is for use by Registered Architects, Licensed Designers or Chartered Engineers to assist in developing project details using Sto Systems. Stoanz Ltd reserve the right to alter or update information at any time without prior notice and it is the responsibility of the designer, project manager or Sto contractor to insure they have and use the current Sto details and specifications on site.



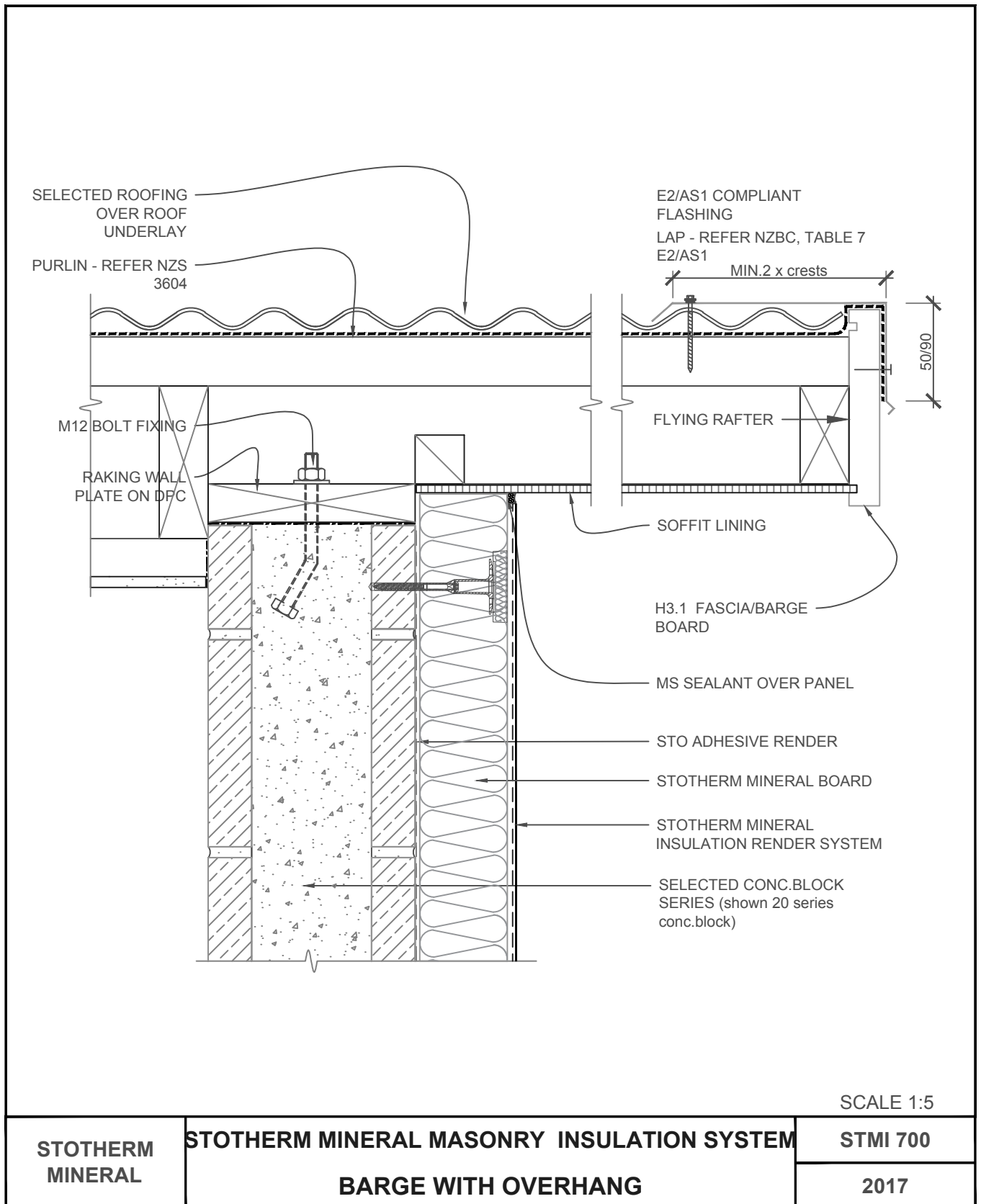
NOTE: EAVE FLASHING **REQUIRED** WHERE

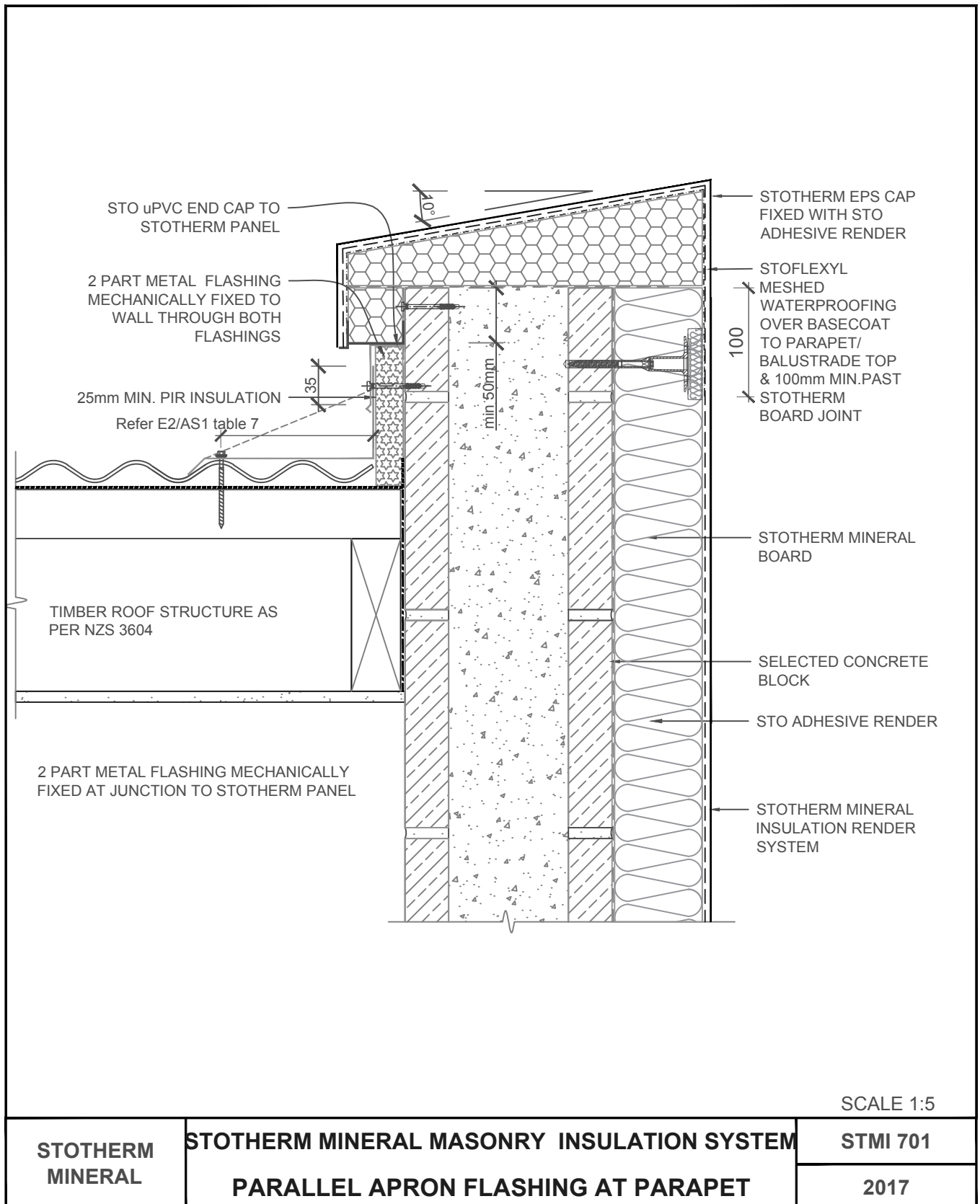
- ROOF SLOPE IS 10° or LESS
- SOFFIT WIDTH IS 100mm or LESS
- WIND ZONES ARE VERY HIGH or EXTRA HIGH

SCALE 1:10

STOTHERM MINERAL	STOTHERM MINERAL MASONRY INSULATION SYSTEM  FACE FIXED FASCIA	STMI 603
		2017

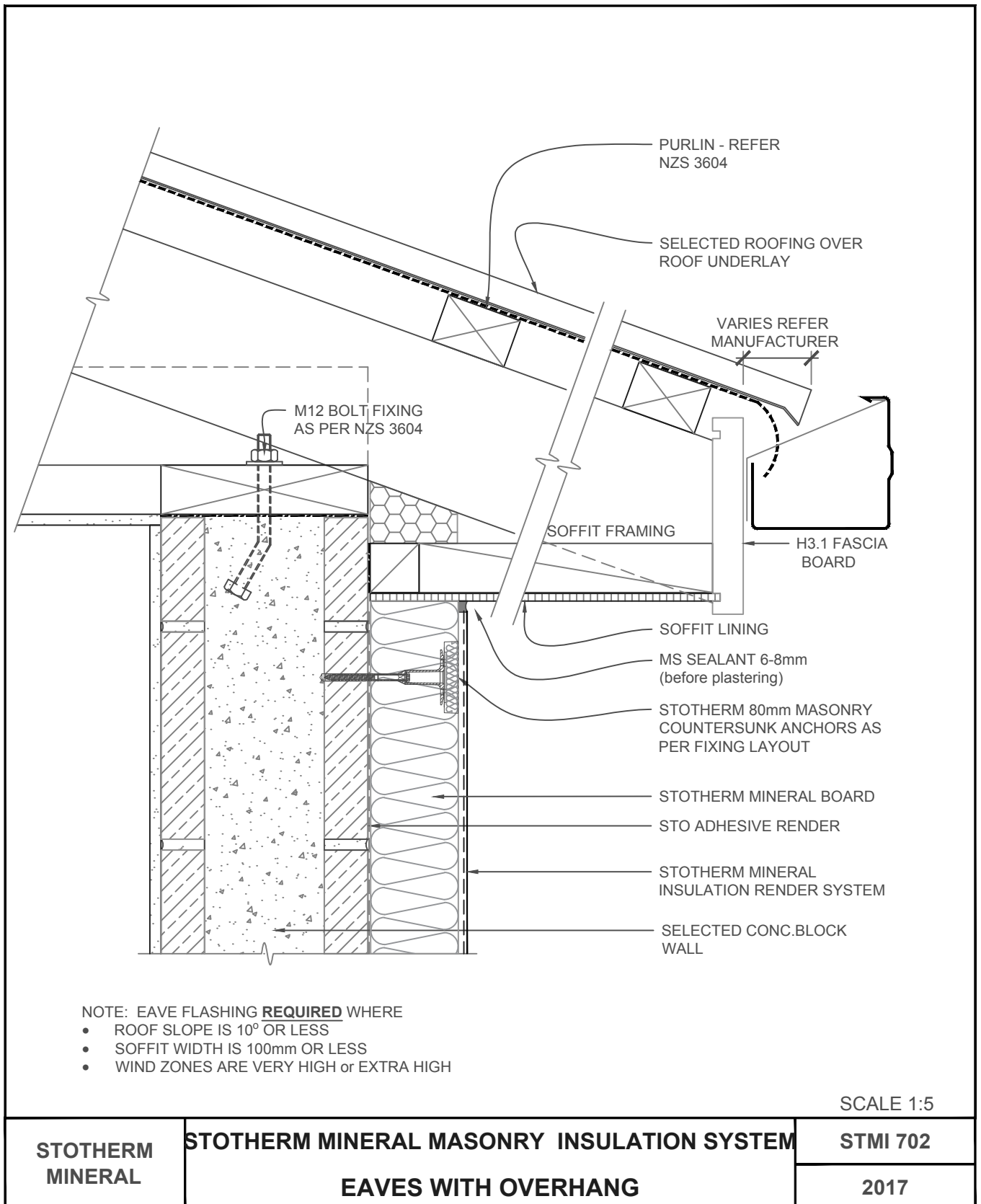
The information contained on this page is based on our experience and research at the date of issue. The detail is for use by Registered Architects, Licensed Designers or Chartered Engineers to assist in developing project details using Sto Systems. Stoanz Ltd reserve the right to alter or update information at any time without prior notice and it is the responsibility of the designer, project manager or Sto contractor to insure they have and use the current Sto details and specifications on site.

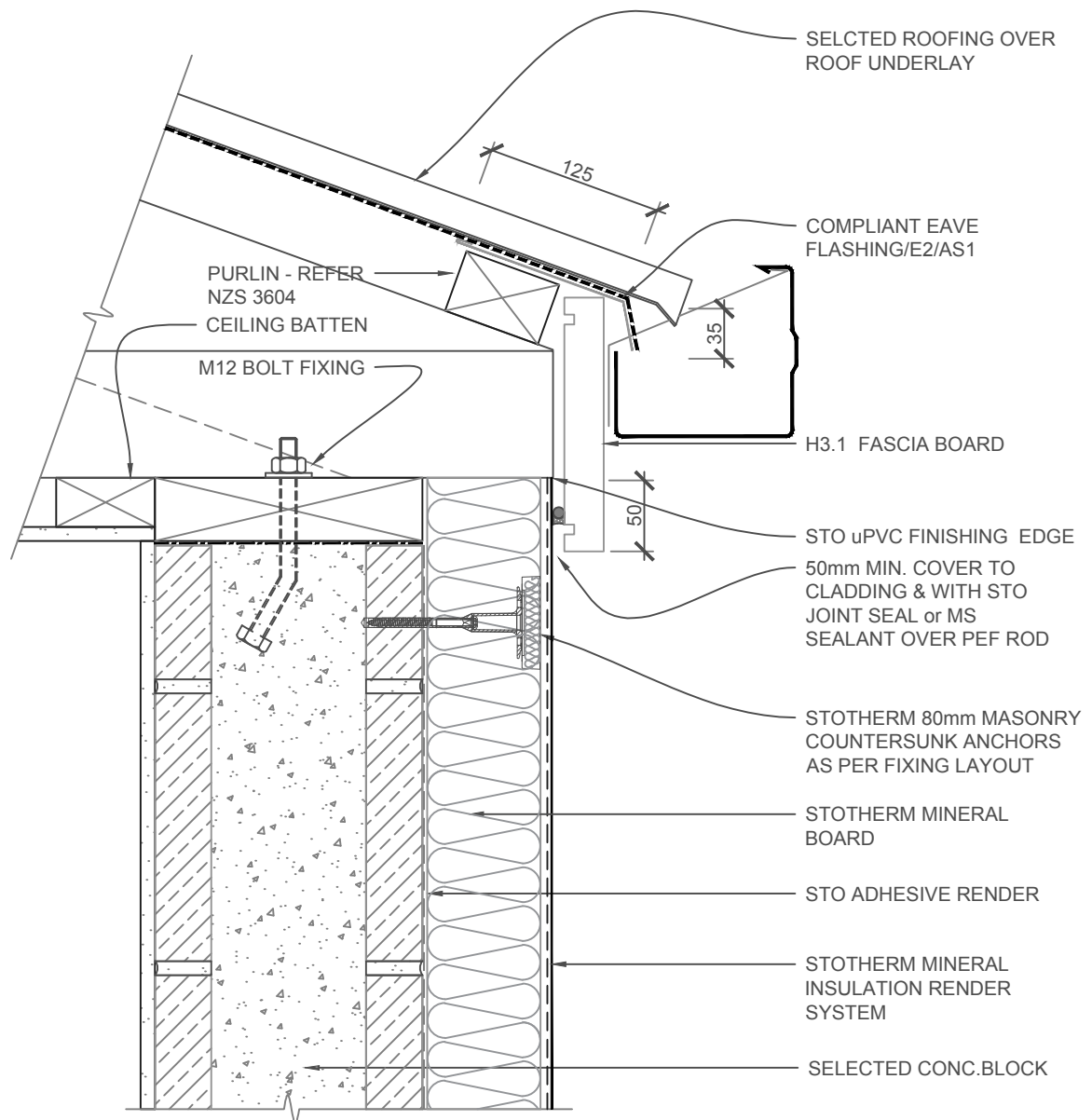




The information contained on this page is based on our experience and research at the date of issue. The detail is for use by Registered Architects, Licensed Designers or Chartered Engineers to assist in developing project details using Sto Systems. Stoanz Ltd reserve the right to alter or update information at any time without prior notice and it is the responsibility of the designer, project manager or Sto contractor to insure they have and use the current Sto details and specifications on site.







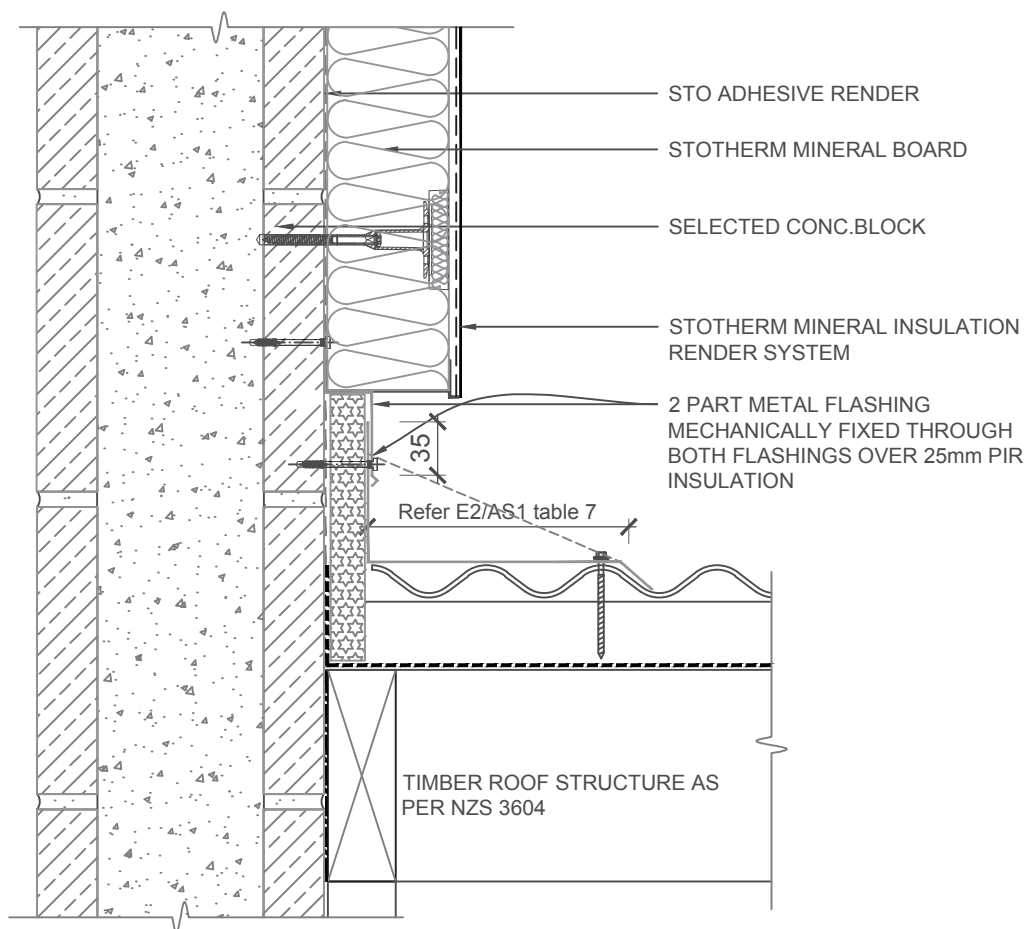
NOTE: EAVE FLASHING **REQUIRED** WHERE

- ROOF SLOPE IS 10° OR LESS
- SOFFIT WIDTH IS 100mm OR LESS
- WIND ZONES ARE VERY HIGH or EXTRA HIGH

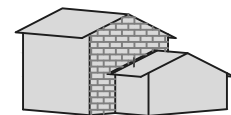
SCALE 1:5

STOTHERM MINERAL	STOTHERM MINERAL MASONRY INSULATION SYSTEM  EAVES WITH NO OVERHANG	STMI 703
		2017

The information contained on this page is based on our experience and research at the date of issue. The detail is for use by Registered Architects, Licensed Designers or Chartered Engineers to assist in developing project details using Sto Systems. Stoanz Ltd reserve the right to alter or update information at any time without prior notice and it is the responsibility of the designer, project manager or Sto contractor to insure they have and use the current Sto details and specifications on site.



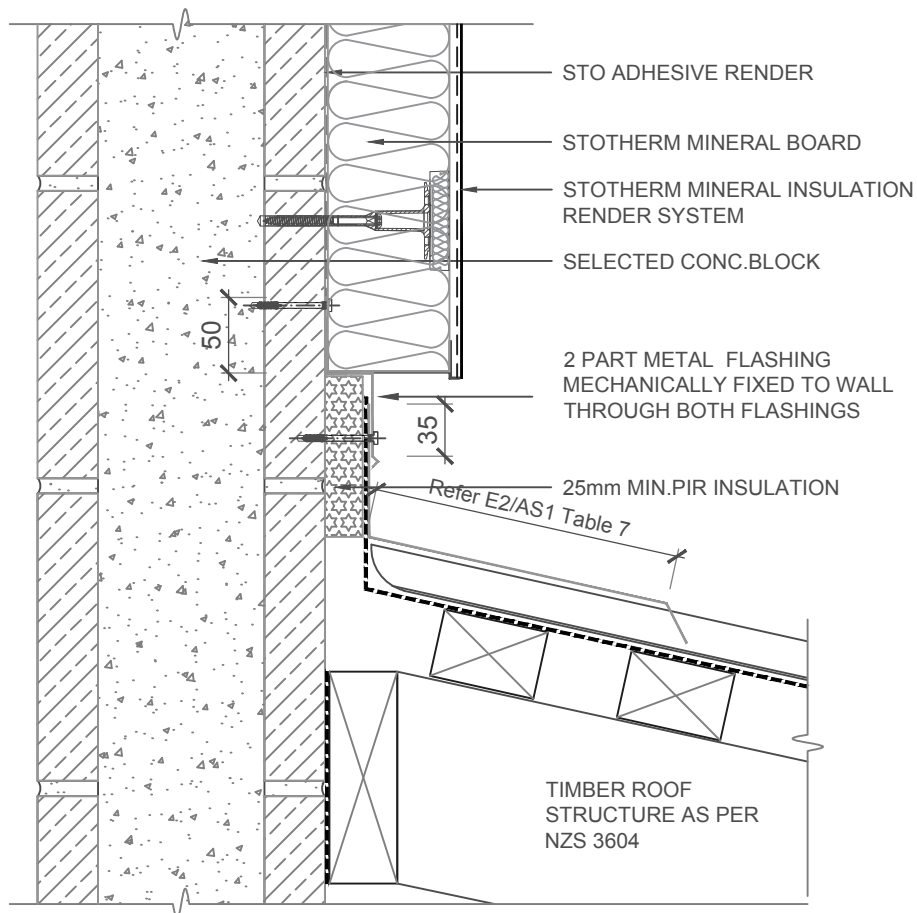
**NOTE:** INSTALL DIVERTER FLASHING  
AT ROOF/GUTTER JUNCTION



SCALE 1:5

STOTHERM MINERAL	STOTHERM MINERAL MASONRY INSULATION SYSTEM  PARALLEL APRON FLASHING	STMI 704  2017
---------------------	---	----------------------

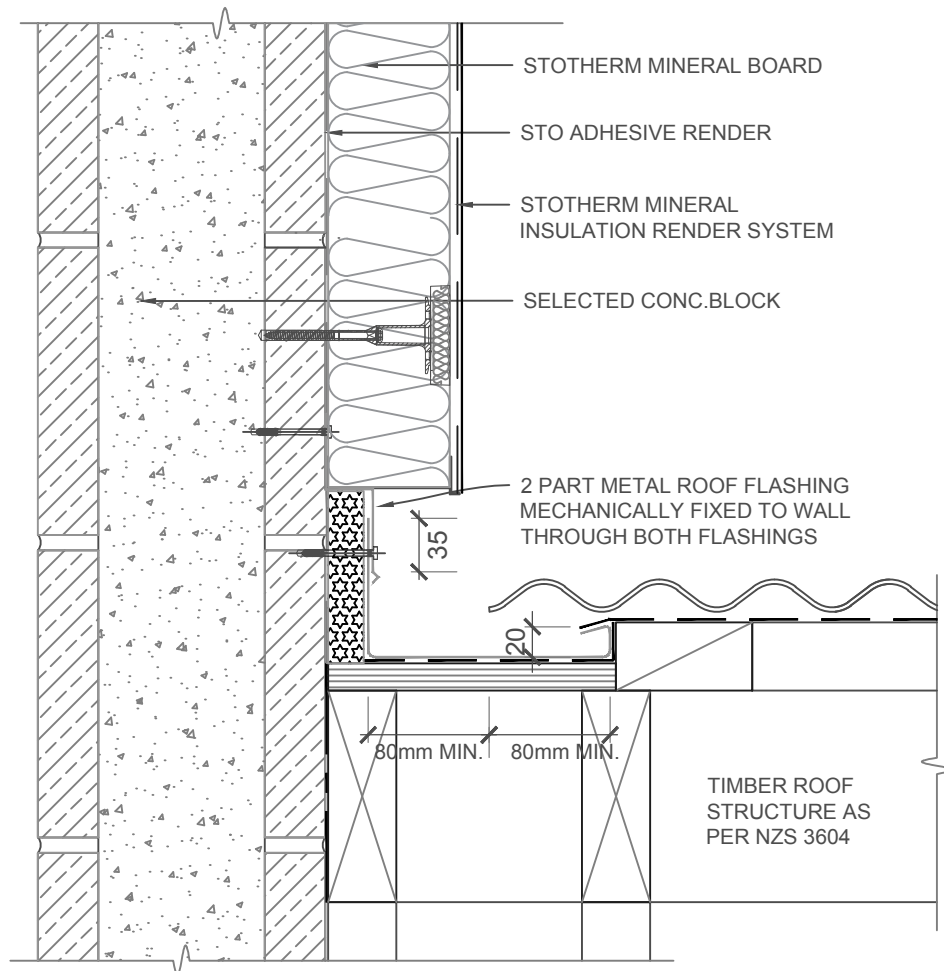
The information contained on this page is based on our experience and research at the date of issue. The detail is for use by Registered Architects, Licensed Designers or Chartered Engineers to assist in developing project details using Sto Systems. Stoanz Ltd reserve the right to alter or update information at any time without prior notice and it is the responsibility of the designer, project manager or Sto contractor to insure they have and use the current Sto details and specifications on site.



SCALE 1:5

STOTHERM MINERAL	STOTHERM MINERAL MASONRY INSULATION SYSTEM TRANSVERSE APRON FLASHING	STMI 705
		2017

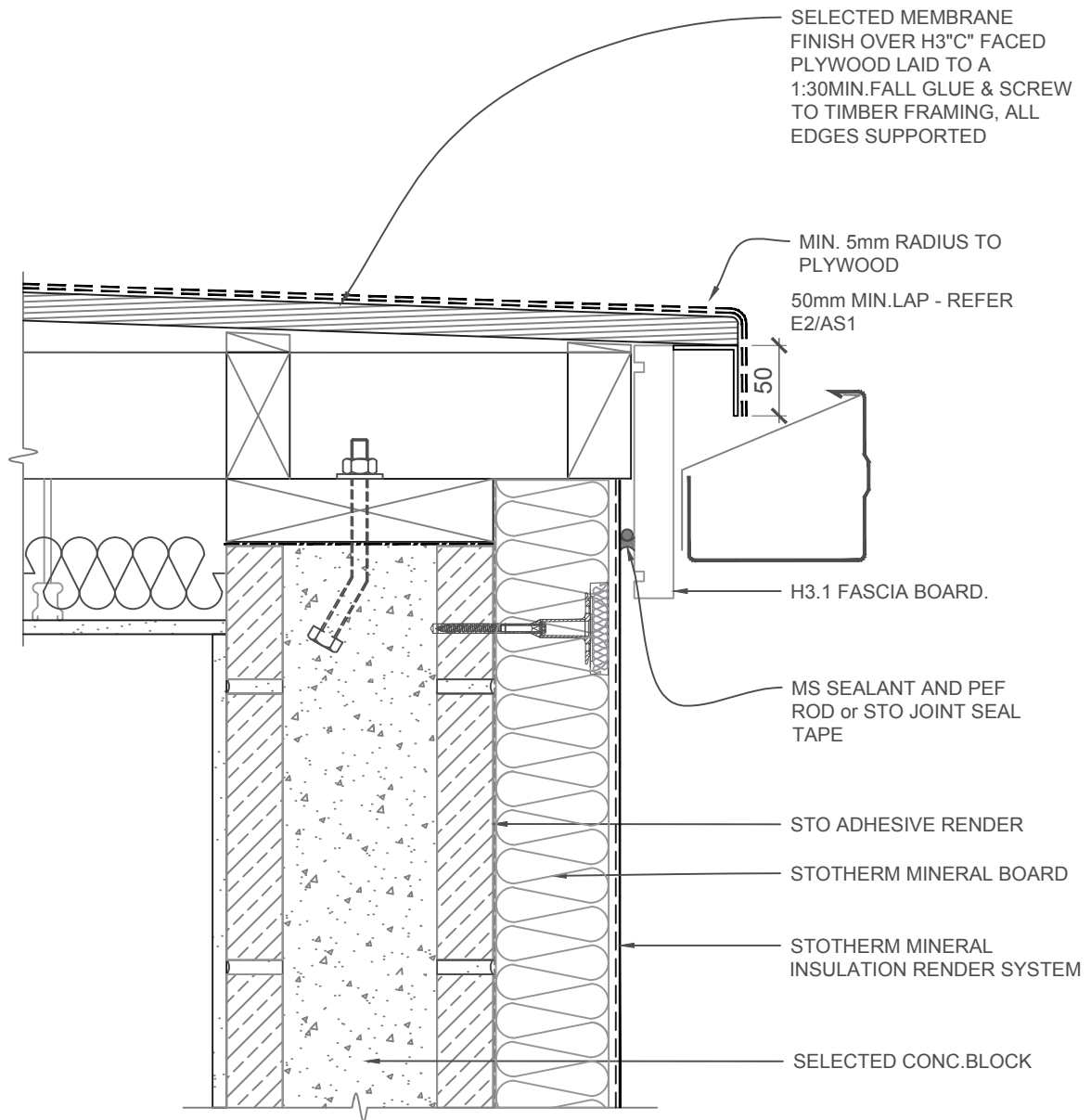
The information contained on this page is based on our experience and research at the date of issue. The detail is for use by Registered Architects, Licensed Designers or Chartered Engineers to assist in developing project details using Sto Systems. Stoanz Ltd reserve the right to alter or update information at any time without prior notice and it is the responsibility of the designer, project manager or Sto contractor to insure they have and use the current Sto details and specifications on site.



SCALE 1:5

STOTHERM MINERAL	STOTHERM MINERAL MASONRY INSULATION SYSTEM PARALLEL ROOF HIDDEN GUTTER	STMI 706
		2017

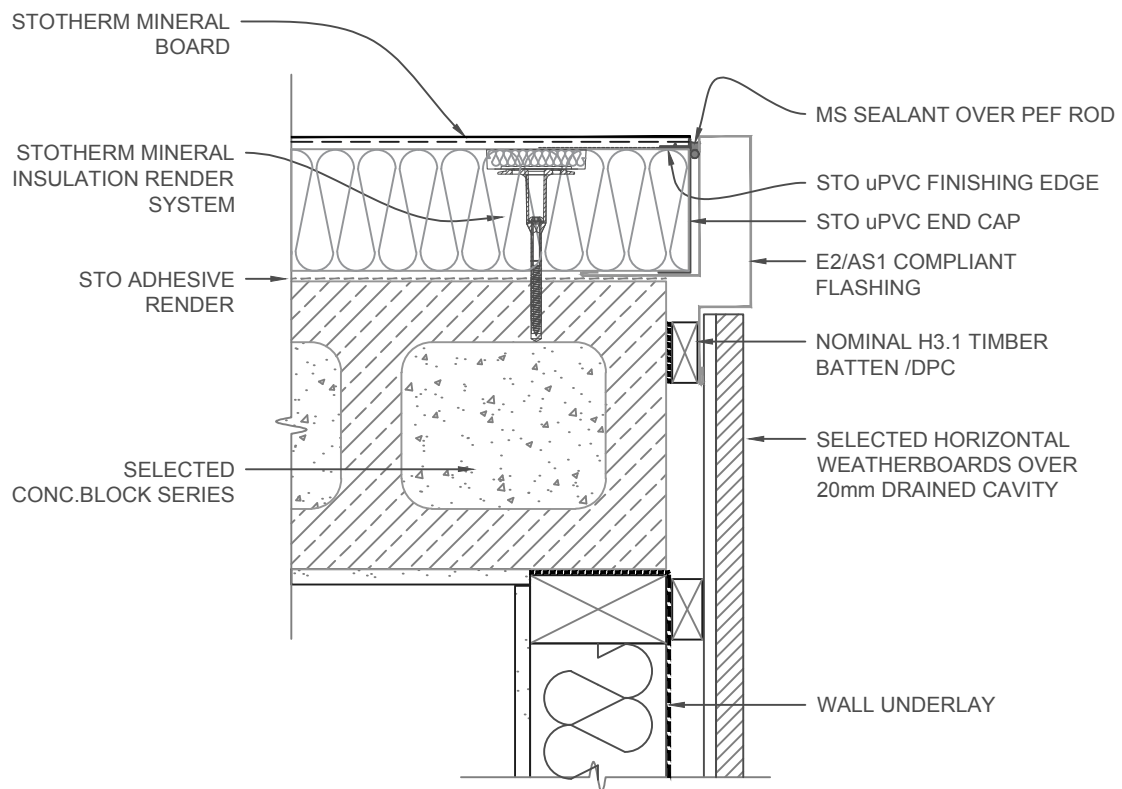
The information contained on this page is based on our experience and research at the date of issue. The detail is for use by Registered Architects, Licensed Designers or Chartered Engineers to assist in developing project details using Sto Systems. Stoanz Ltd reserve the right to alter or update information at any time without prior notice and it is the responsibility of the designer, project manager or Sto contractor to insure they have and use the current Sto details and specifications on site.



SCALE 1:5

STOTHERM MINERAL	STOTHERM MINERAL MASONRY INSULATION SYSTEM  FACE FIXED FASCIA/MEMBRANE ROOF	STMI 707
		2017

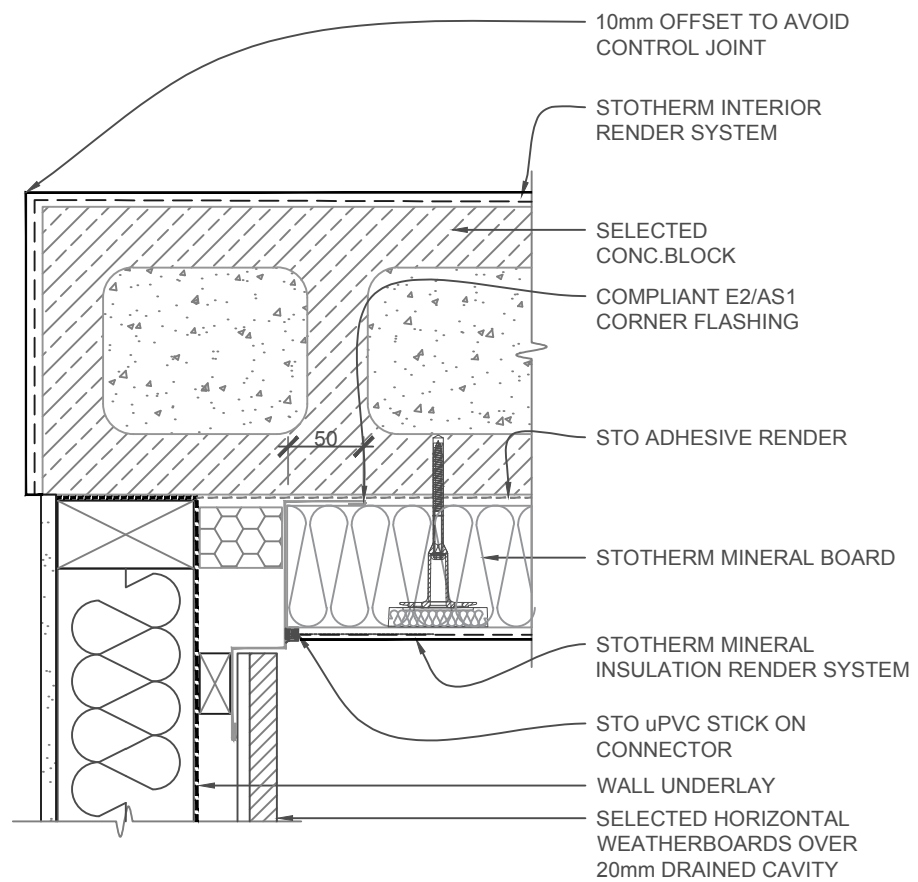
The information contained on this page is based on our experience and research at the date of issue. The detail is for use by Registered Architects, Licensed Designers or Chartered Engineers to assist in developing project details using Sto Systems. Stoanz Ltd reserve the right to alter or update information at any time without prior notice and it is the responsibility of the designer, project manager or Sto contractor to insure they have and use the current Sto details and specifications on site.



SCALE 1:5

STOTHERM MINERAL	STOTHERM MINERAL MASONRY INSULATION SYSTEM EXTERNAL CORNER	STMI 800
		2017

The information contained on this page is based on our experience and research at the date of issue. The detail is for use by Registered Architects, Licensed Designers or Chartered Engineers to assist in developing project details using Sto Systems. Stoanz Ltd reserve the right to alter or update information at any time without prior notice and it is the responsibility of the designer, project manager or Sto contractor to insure they have and use the current Sto details and specifications on site.

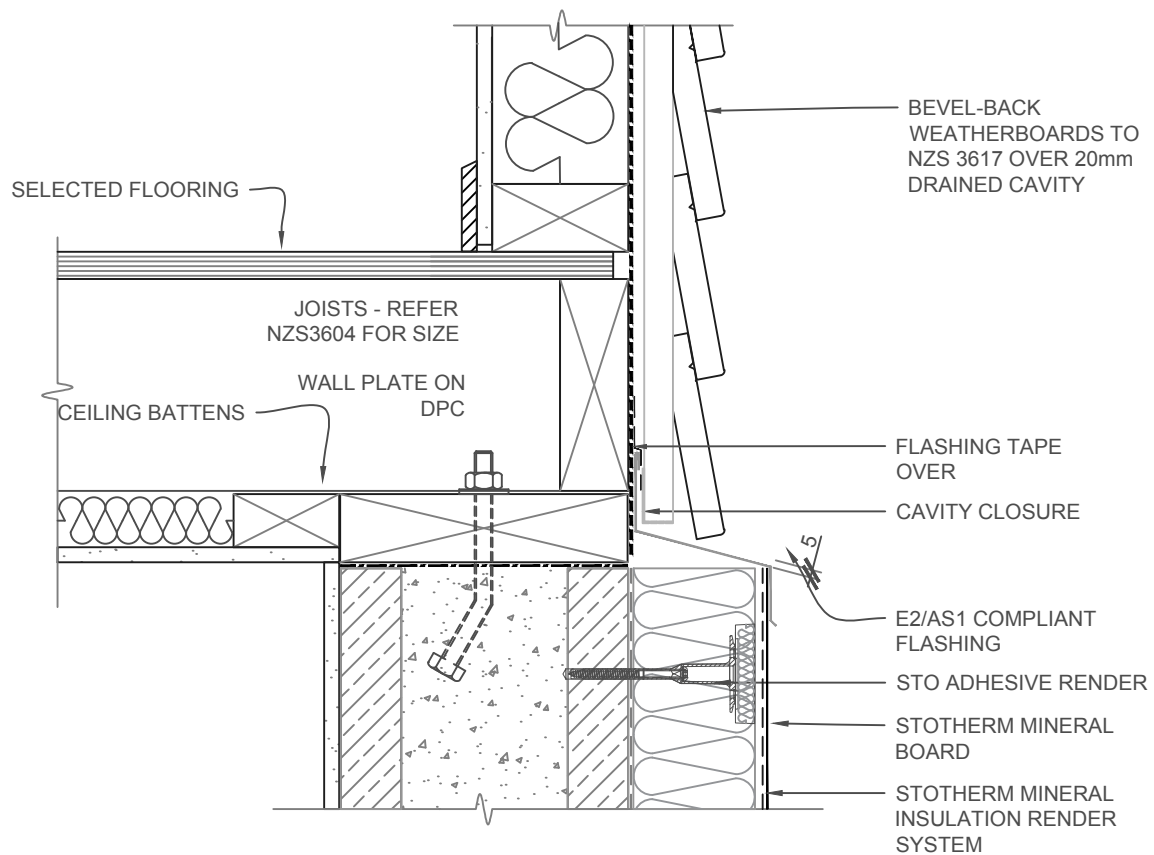


SCALE 1:5

STOTHERM MINERAL	STOTHERM MINERAL MASONRY INSULATION SYSTEM  INTERNAL CORNER	STMI 801
		2017

The information contained on this page is based on our experience and research at the date of issue. The detail is for use by Registered Architects, Licensed Designers or Chartered Engineers to assist in developing project details using Sto Systems. Stoanz Ltd reserve the right to alter or update information at any time without prior notice and it is the responsibility of the designer, project manager or Sto contractor to insure they have and use the current Sto details and specifications on site.

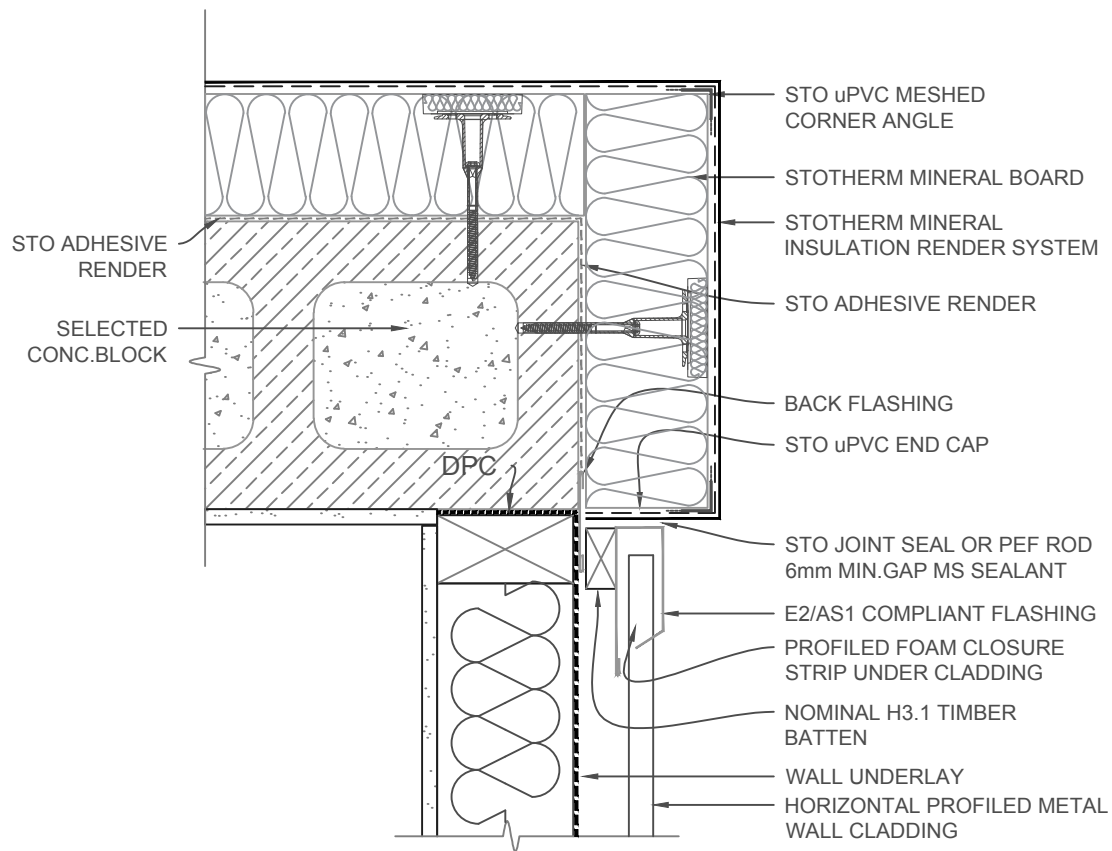




SCALE 1:5

STOTHERM MINERAL	STOTHERM MINERAL MASONRY INSULATION SYSTEM  HORIZONTAL JUNCTION	STMI 802
		2017

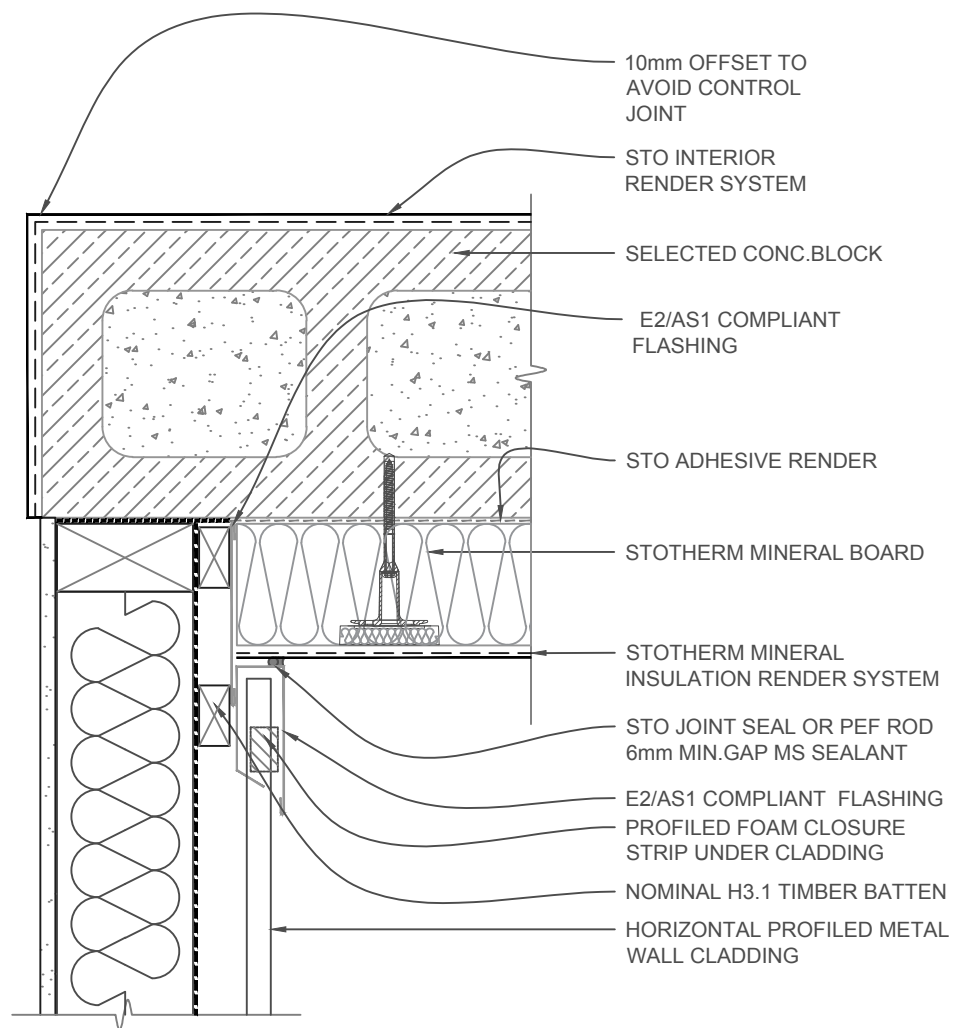
The information contained on this page is based on our experience and research at the date of issue. The detail is for use by Registered Architects, Licensed Designers or Chartered Engineers to assist in developing project details using Sto Systems. Stoanz Ltd reserve the right to alter or update information at any time without prior notice and it is the responsibility of the designer, project manager or Sto contractor to insure they have and use the current Sto details and specifications on site.



SCALE 1:5

STOTHERM MINERAL	STOTHERM MINERAL MASONRY INSULATION SYSTEM EXTERNAL CORNER/HORIZ.PROFILED METAL	STMI 850
		2017

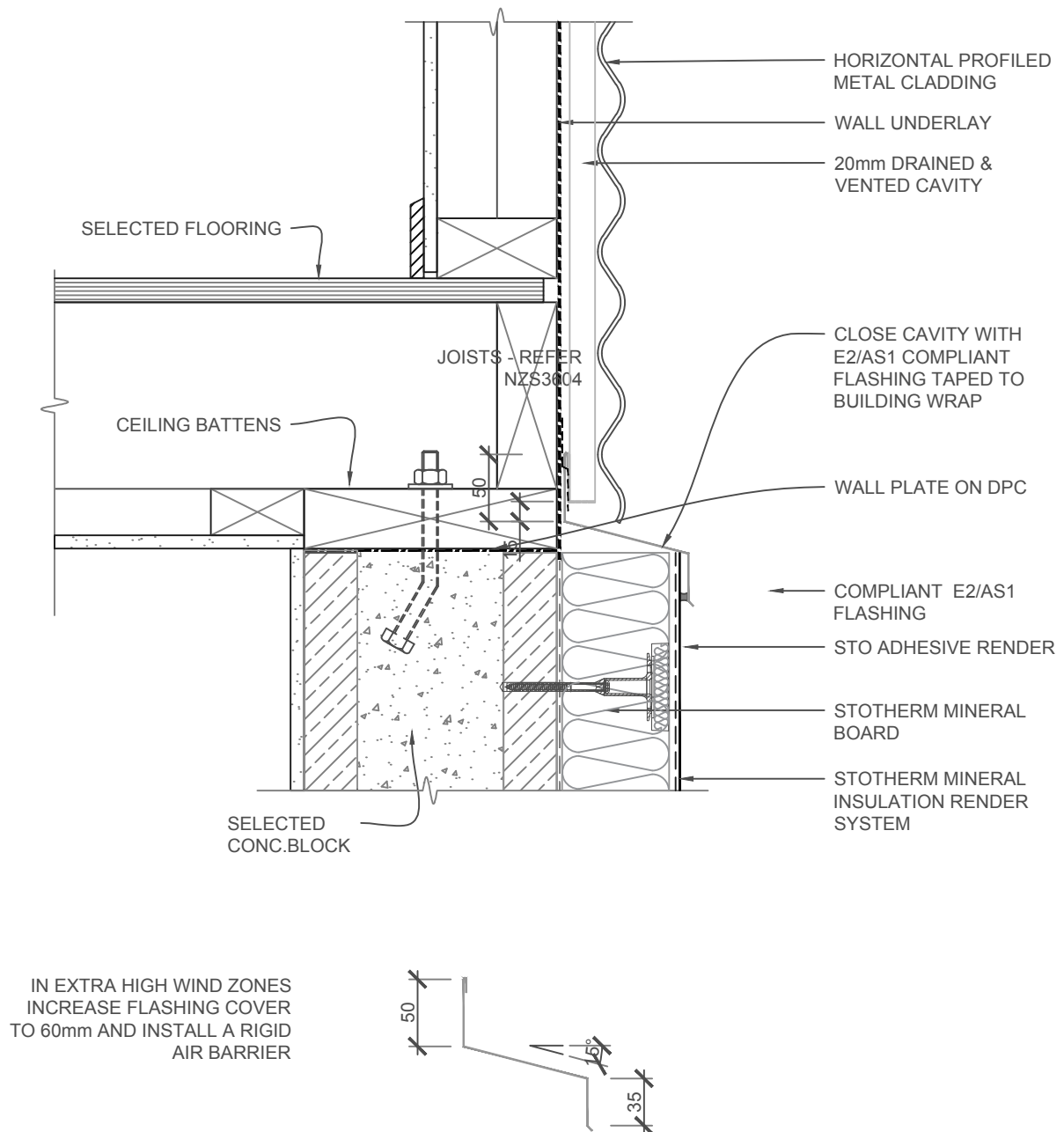
The information contained on this page is based on our experience and research at the date of issue. The detail is for use by Registered Architects, Licensed Designers or Chartered Engineers to assist in developing project details using Sto Systems. Stoanz Ltd reserve the right to alter or update information at any time without prior notice and it is the responsibility of the designer, project manager or Sto contractor to insure they have and use the current Sto details and specifications on site.



SCALE 1:5

STOTHERM MINERAL	STOTHERM MINERAL MASONRY INSULATION SYSTEM INTERNAL CORNER/HORIZ.PROFIED METAL	STMI 851
		2017

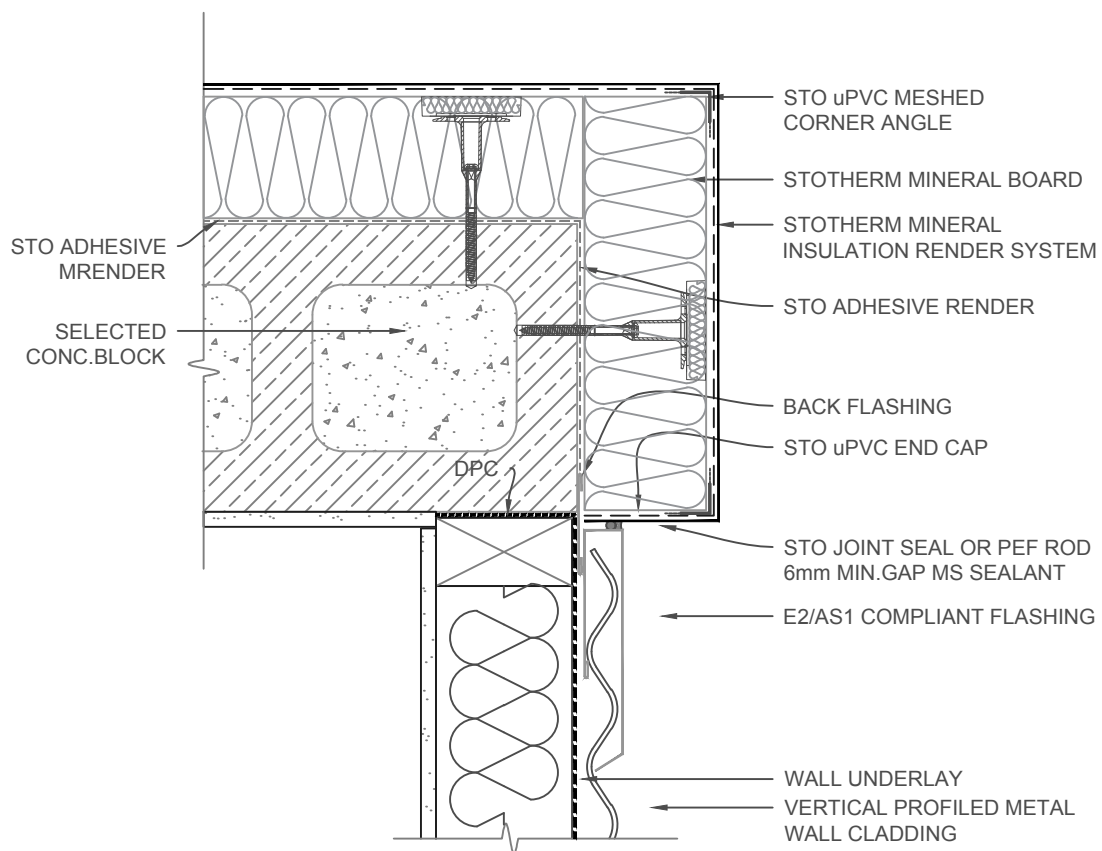
The information contained on this page is based on our experience and research at the date of issue. The detail is for use by Registered Architects, Licensed Designers or Chartered Engineers to assist in developing project details using Sto Systems. Stoanz Ltd reserve the right to alter or update information at any time without prior notice and it is the responsibility of the designer, project manager or Sto contractor to insure they have and use the current Sto details and specifications on site.



SCALE 1:5

STOTHERM MINERAL	STOTHERM MINERAL INSULATION SYSTEM STOTHERM MINERAL MASONRY INSULATION SYSTEM	STMI 852
		2017

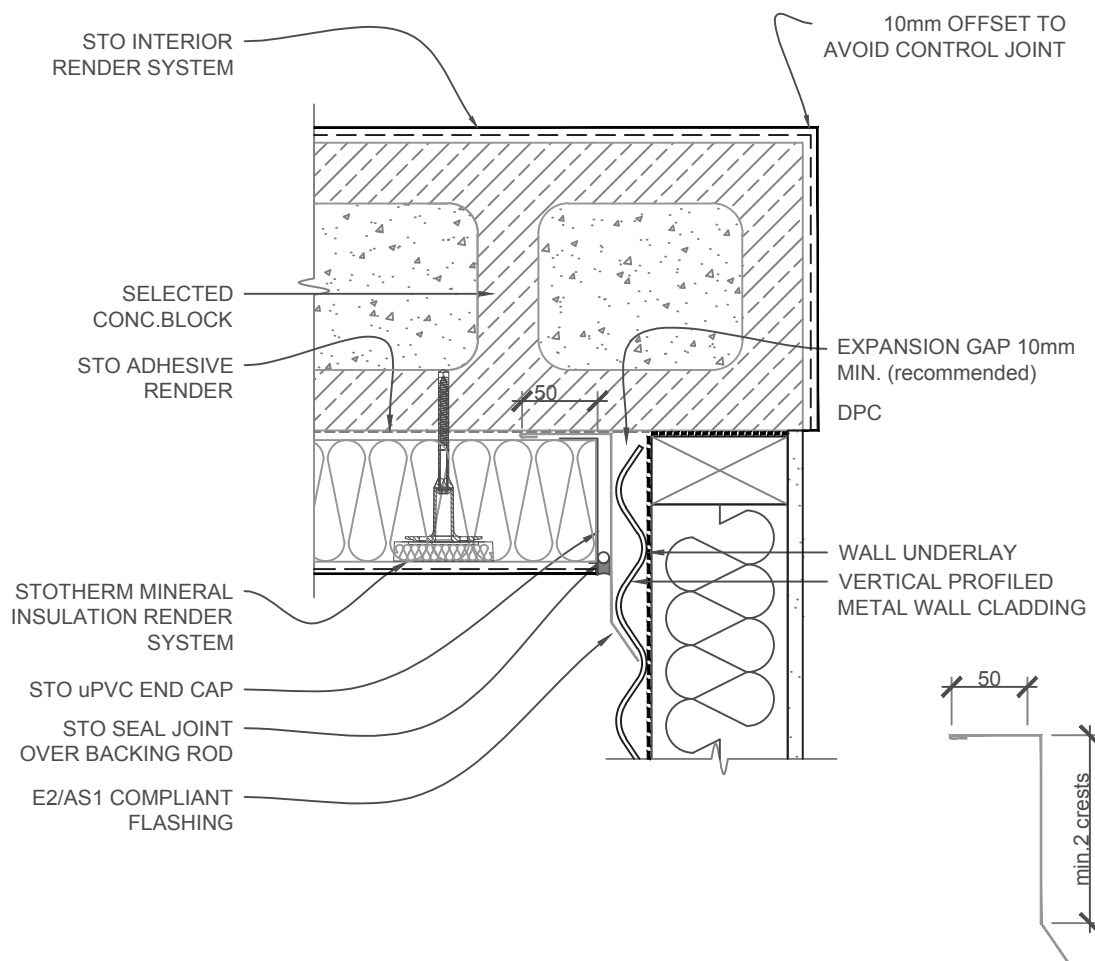
The information contained on this page is based on our experience and research at the date of issue. The detail is for use by Registered Architects, Licensed Designers or Chartered Engineers to assist in developing project details using Sto Systems. Stoanz Ltd reserve the right to alter or update information at any time without prior notice and it is the responsibility of the designer, project manager or Sto contractor to insure they have and use the current Sto details and specifications on site.



SCALE 1:5

STOTHERM MINERAL	STOTHERM MINERAL MASONRY INSULATION SYSTEM EXT.CORNER/VERTICAL PROFILED METAL	STM 853
		2017

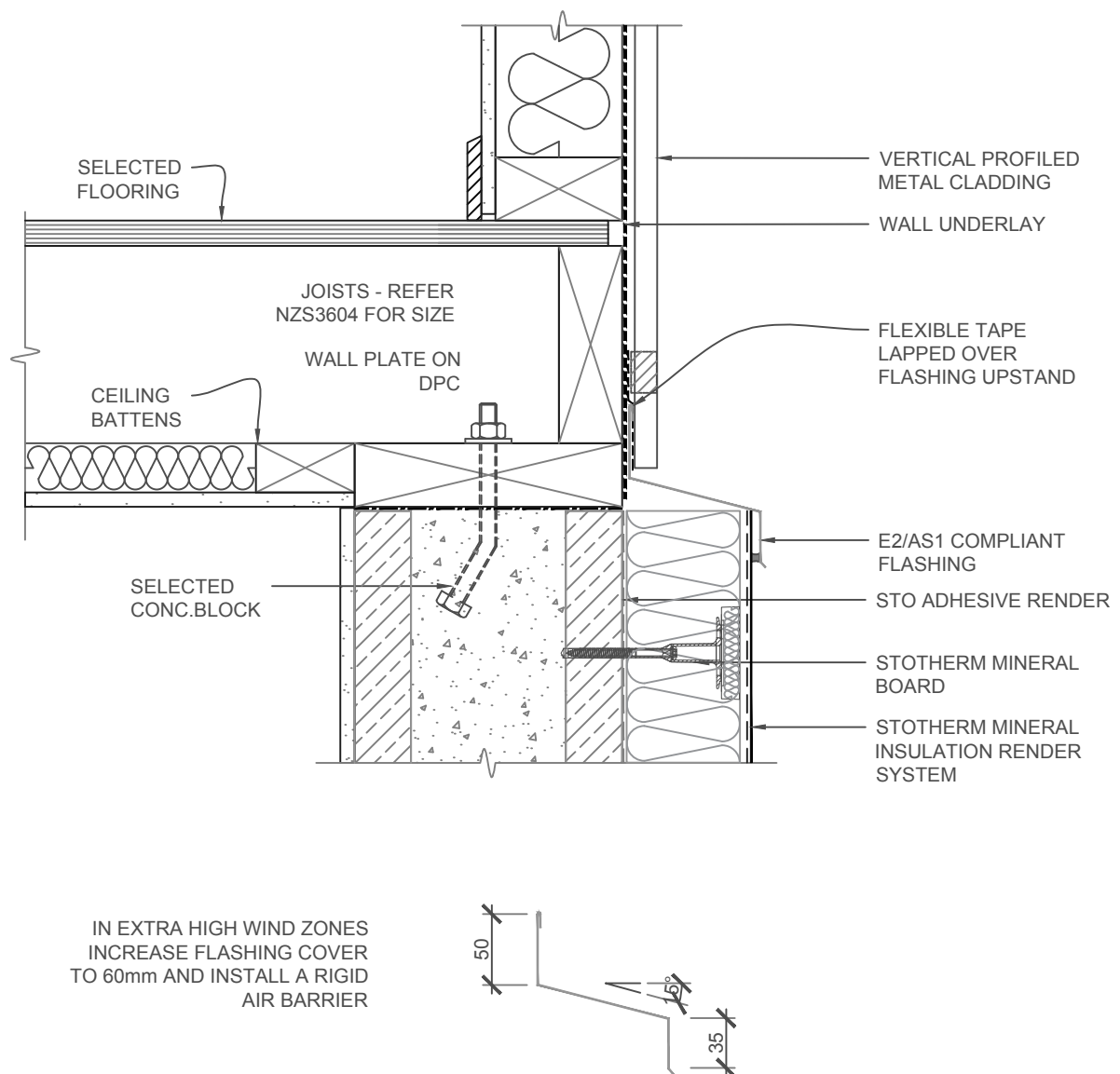
The information contained on this page is based on our experience and research at the date of issue. The detail is for use by Registered Architects, Licensed Designers or Chartered Engineers to assist in developing project details using Sto Systems. Stoanz Ltd reserve the right to alter or update information at any time without prior notice and it is the responsibility of the designer, project manager or Sto contractor to insure they have and use the current Sto details and specifications on site.



SCALE 1:5

STOTHERM MINERAL	STOTHERM MINERAL MASONRY INSULATION SYSTEM INT.CORNER/VERTICAL PROFILED METAL	STMI 854
		2017

The information contained on this page is based on our experience and research at the date of issue. The detail is for use by Registered Architects, Licensed Designers or Chartered Engineers to assist in developing project details using Sto Systems. Stoanz Ltd reserve the right to alter or update information at any time without prior notice and it is the responsibility of the designer, project manager or Sto contractor to insure they have and use the current Sto details and specifications on site.



SCALE 1:5

STOTHERM MINERAL	STOTHERM MINERAL MASONRY INSULATION SYSTEM HORIZ.JUNCTION/VERTICAL PROFILED METAL	STMI 855
		2017

The information contained on this page is based on our experience and research at the date of issue. The detail is for use by Registered Architects, Licensed Designers or Chartered Engineers to assist in developing project details using Sto Systems. Stoanz Ltd reserve the right to alter or update information at any time without prior notice and it is the responsibility of the designer, project manager or Sto contractor to insure they have and use the current Sto details and specifications on site.