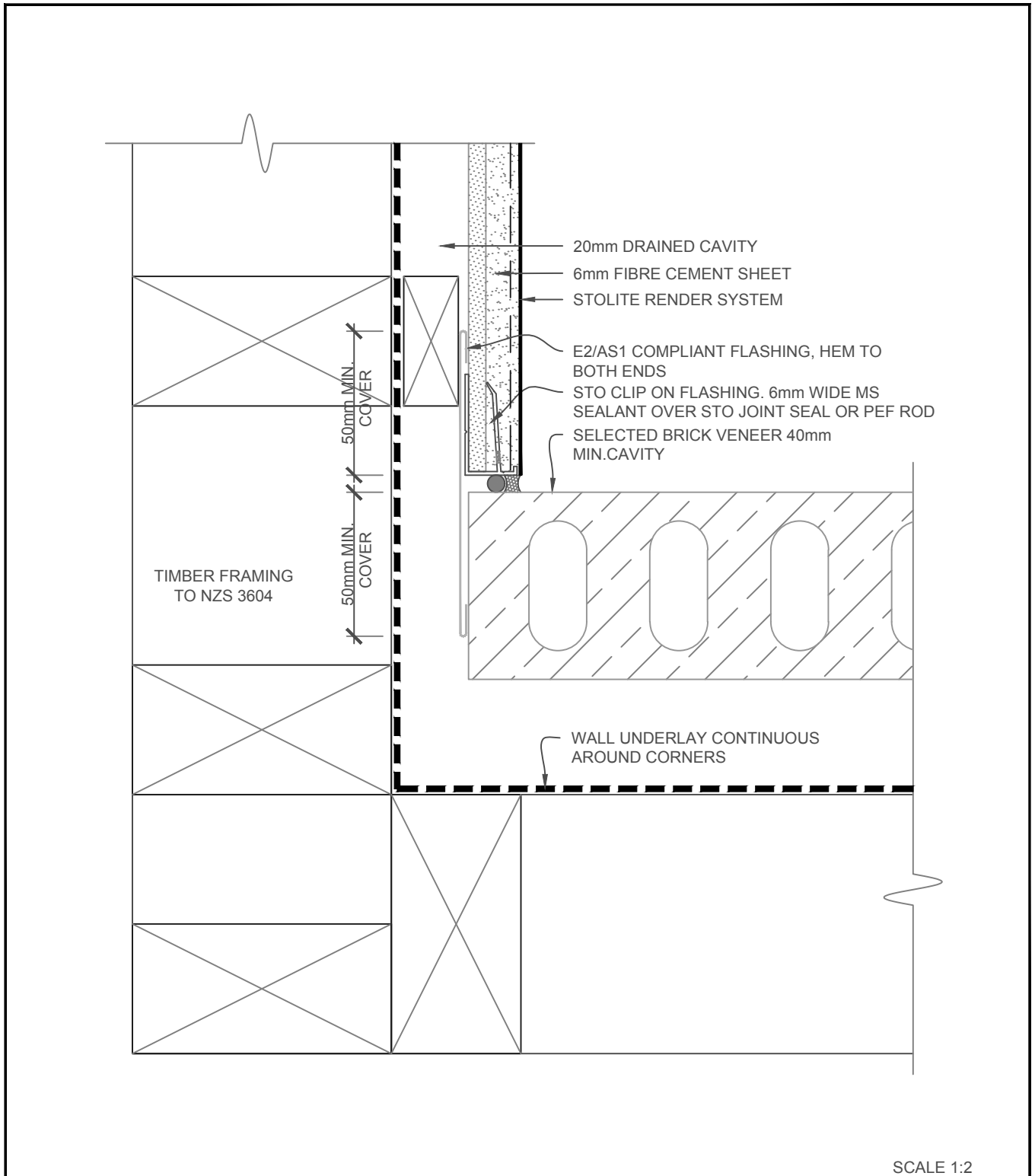


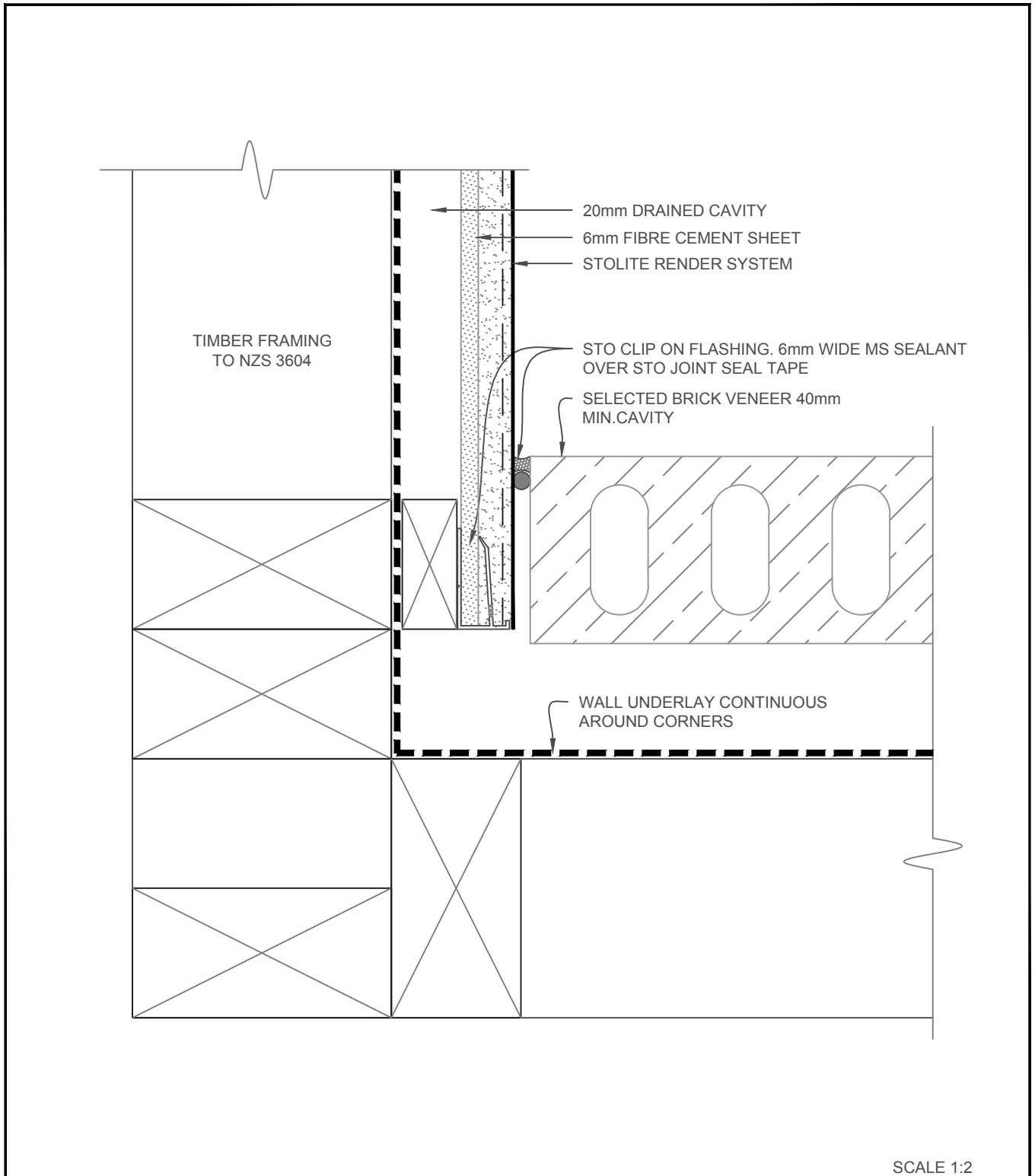
STOLITE SYSTEM	STOLITE CONSTRUCTION SYSTEM	SCALE 1:2
	BRICK VENEER/STOLITE EXTERNAL CORNER	SL 810
		2017

The information contained on this page is based on our experience and research at the date of issue. The detail is for use by Registered Architects, Licensed Designers or Chartered Engineers to assist in developing project details using Sto Systems. Stoanz Ltd reserve the right to alter or update information at any time without prior notice and it is the responsibility of the designer, project manager or Sto contractor to insure they have and use the current Sto details and specifications on site.



STOLITE SYSTEM	STOLITE CONSTRUCTION SYSTEM	SCALE 1:2
	INTERNAL CORNER BRICK VENEER/STOLITE - OPT 1	SL 811
		2017

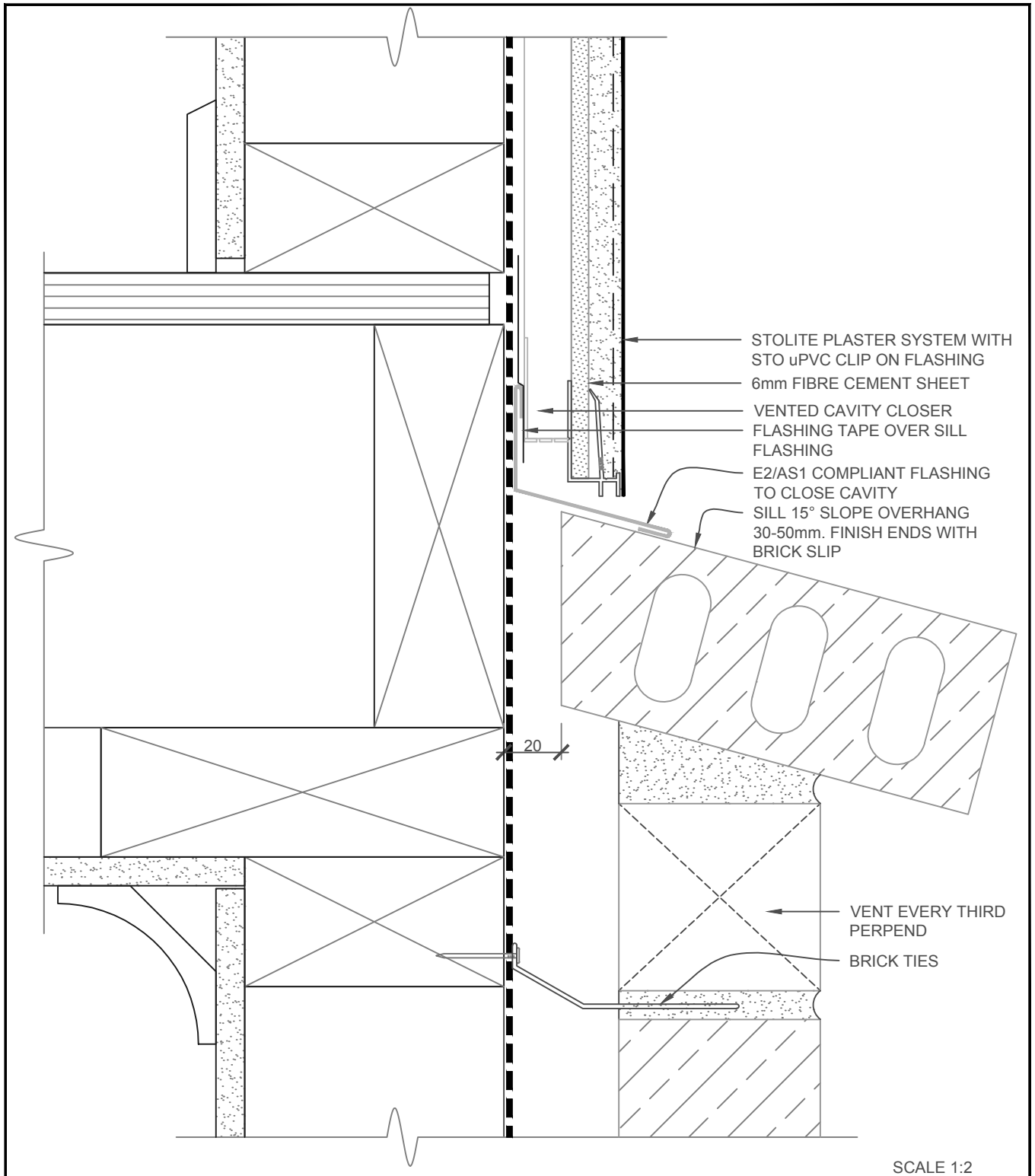
The information contained on this page is based on our experience and research at the date of issue. The detail is for use by Registered Architects, Licensed Designers or Chartered Engineers to assist in developing project details using Sto Systems. Stoanz Ltd reserve the right to alter or update information at any time without prior notice and it is the responsibility of the designer, project manager or Sto contractor to insure they have and use the current Sto details and specifications on site.



SCALE 1:2

STOLITE SYSTEM	STOLITE CONSTRUCTION SYSTEM	SL 812
	INTERNAL CORNER BRICK VENEER/STOLITE - OPT 2	2017

The information contained on this page is based on our experience and research at the date of issue. The detail is for use by Registered Architects, Licensed Designers or Chartered Engineers to assist in developing project details using Sto Systems. Stoanz Ltd reserve the right to alter or update information at any time without prior notice and it is the responsibility of the designer, project manager or Sto contractor to insure they have and use the current Sto details and specifications on site.



STOLITE SYSTEM	STOLITE CONSTRUCTION SYSTEM	SL 813
	INTER-STOREY JUNCTION - STOLITE/BRICK VENEER	2017

The information contained on this page is based on our experience and research at the date of issue. The detail is for use by Registered Architects, Licensed Designers or Chartered Engineers to assist in developing project details using Sto Systems. Stoanz Ltd reserve the right to alter or update information at any time without prior notice and it is the responsibility of the designer, project manager or Sto contractor to insure they have and use the current Sto details and specifications on site.