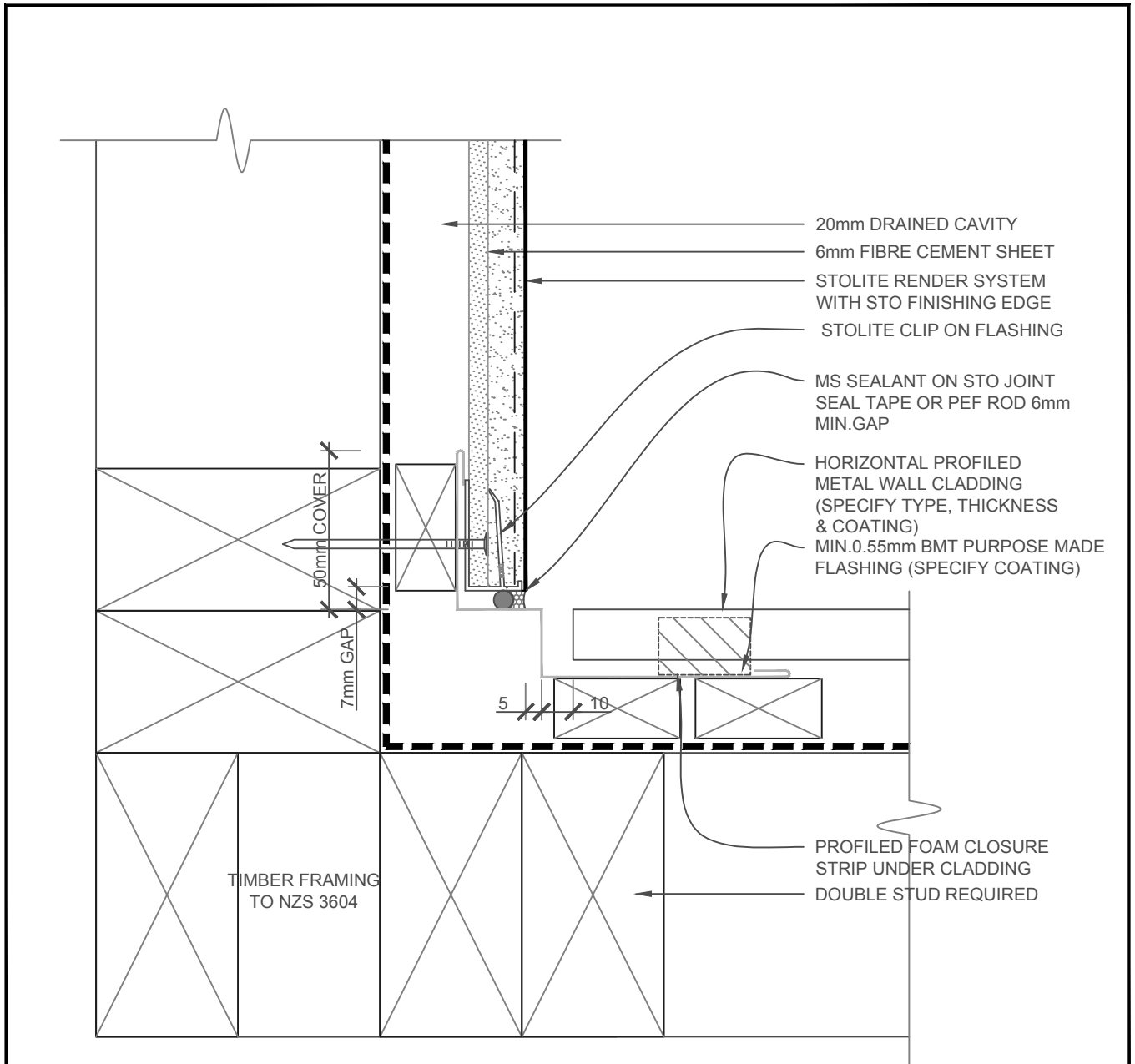


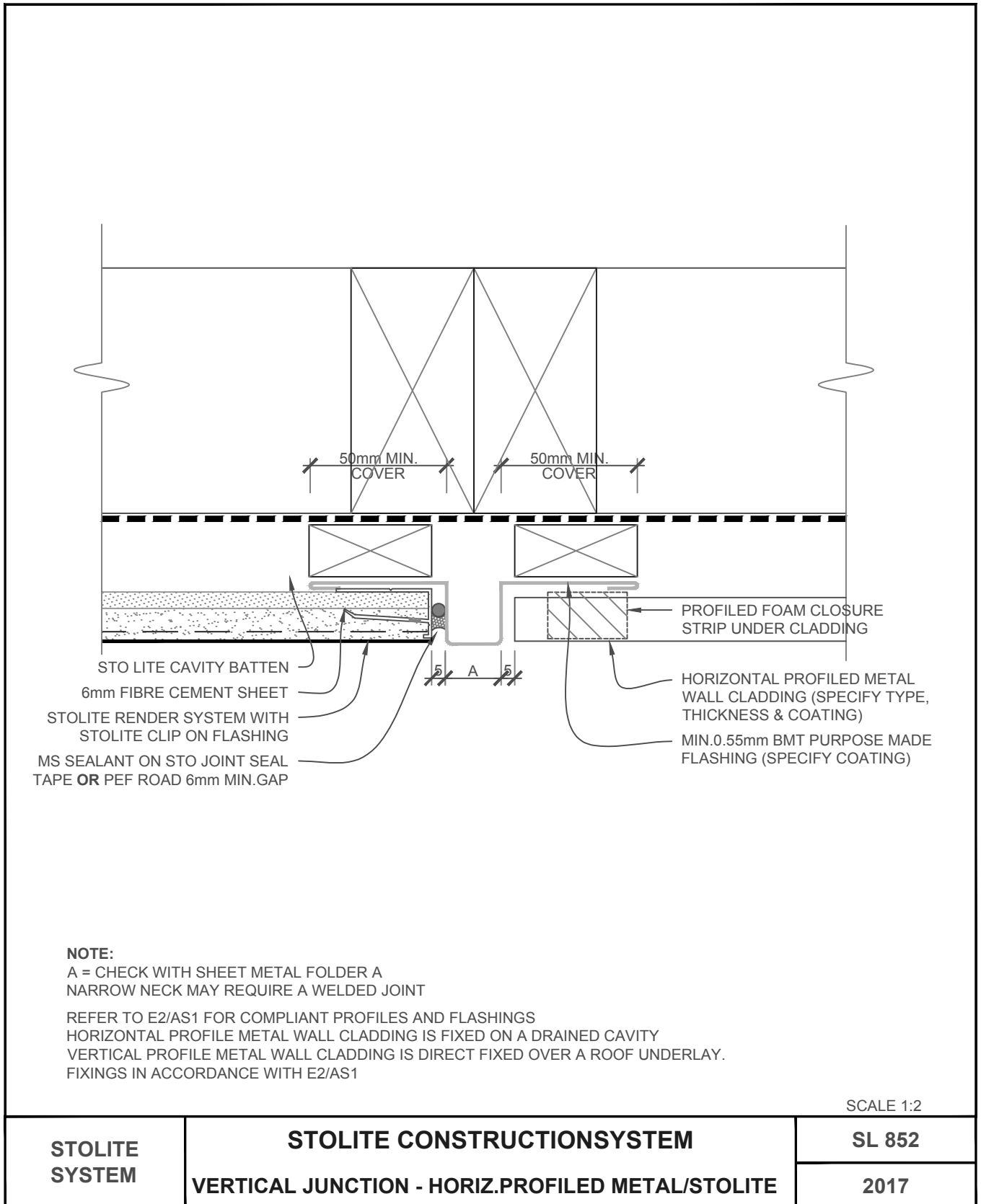
The information contained on this page is based on our experience and research at the date of issue. The detail is for use by Registered Architects, Licensed Designers or Chartered Engineers to assist in developing project details using Sto Systems. Stoanz Ltd reserve the right to alter or update information at any time without prior notice and it is the responsibility of the designer, project manager or Sto contractor to insure they have and use the current Sto details and specifications on site.

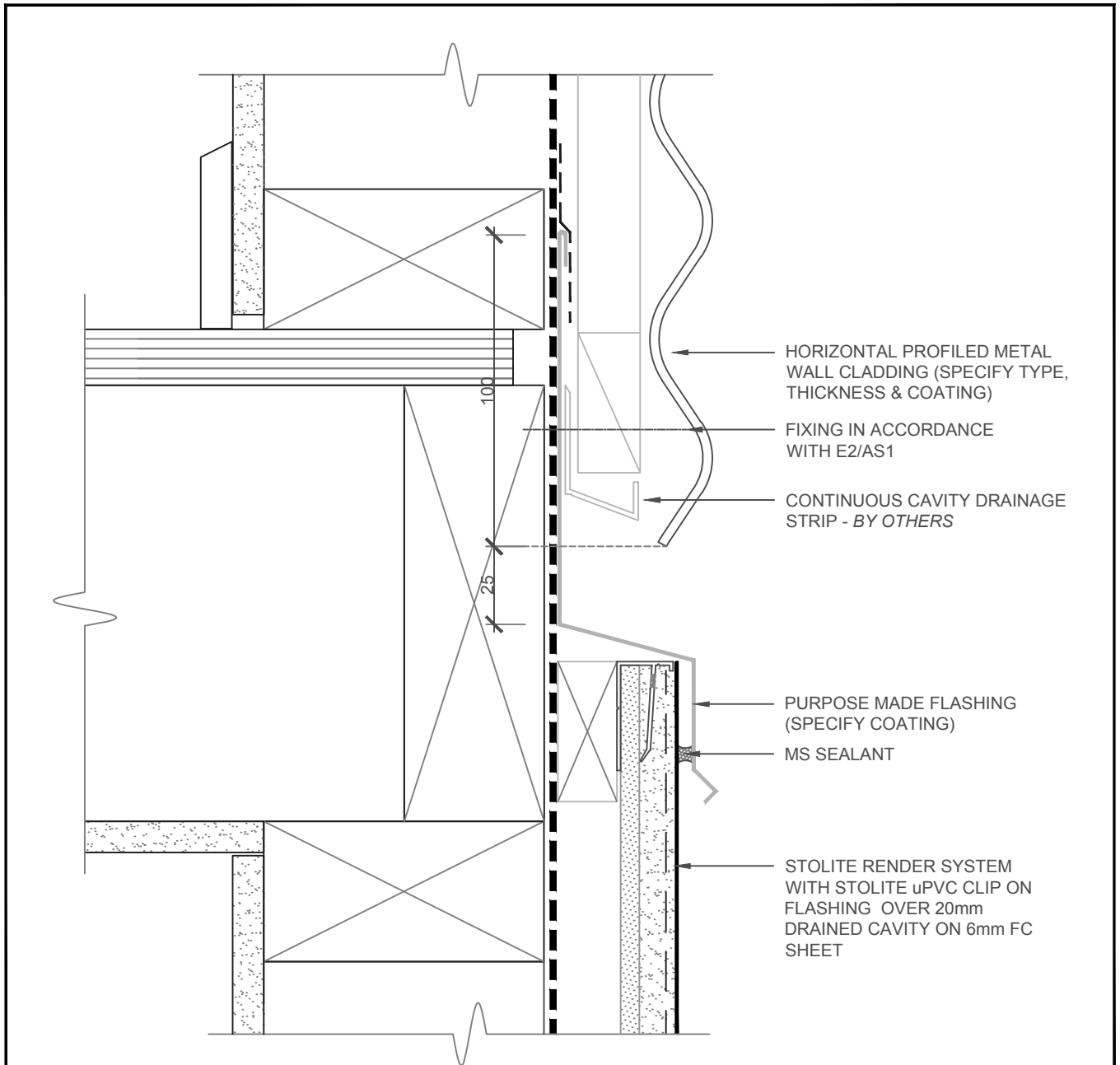


REFER TO E2/AS1 FOR COMPLIANT PROFILES AND FLASHINGS
 HORIZONTAL PROFILE METAL WALL CLADDING IS FIXED ON A DRAINED CAVITY
 VERTICAL PROFILE METAL WALL CLADDING IS DIRECT FIXED OVER A ROOF UNDERLAY.
 FIXINGS IN ACCORDANCE WITH E2/AS1

SCALE 1:2

STOLITE SYSTEM	STOLITE CONSTRUCTION SYSTEM	SL 851
	INT.CORNER - HORIZ.PROFILED METAL/STOLITE	2017

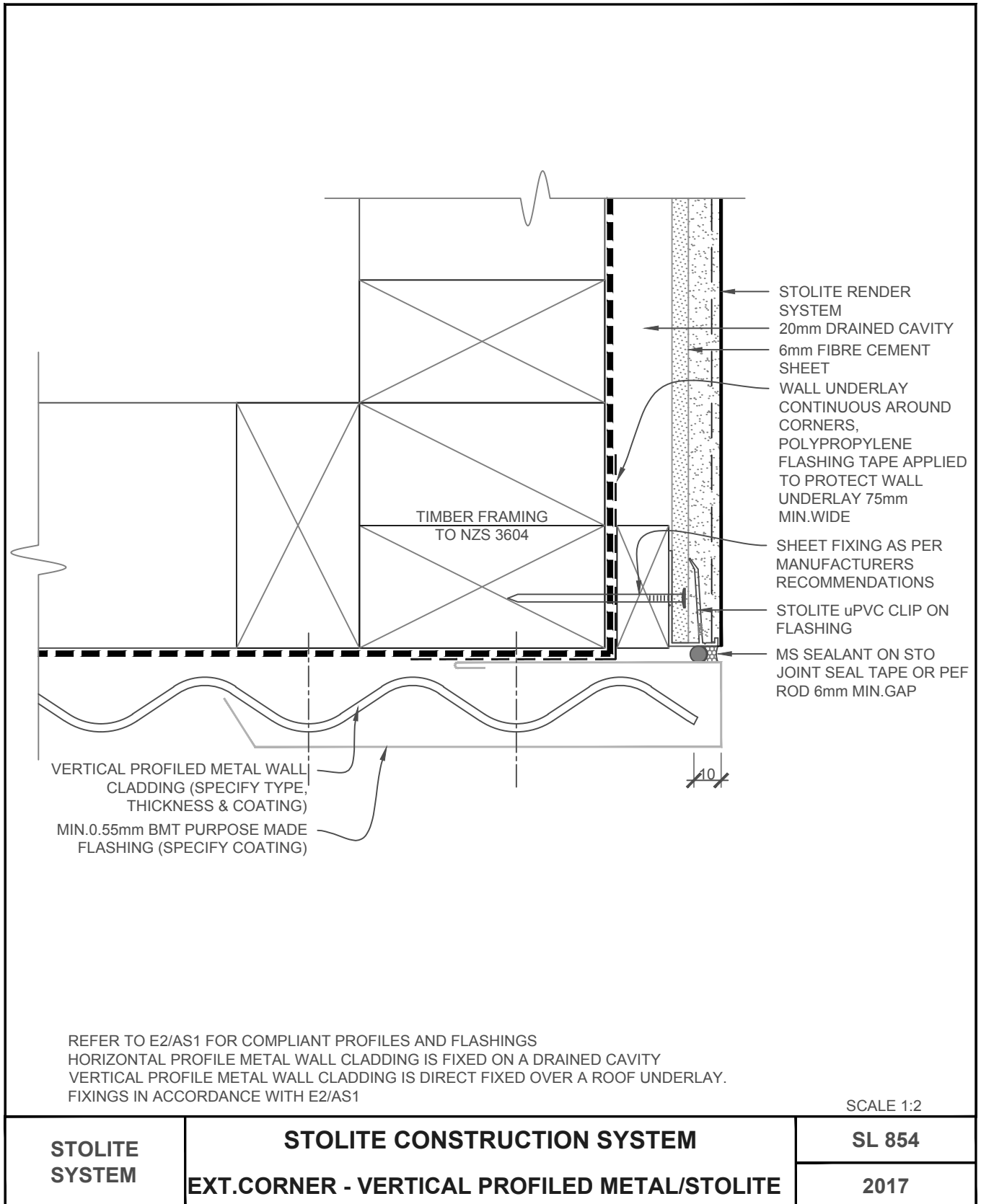




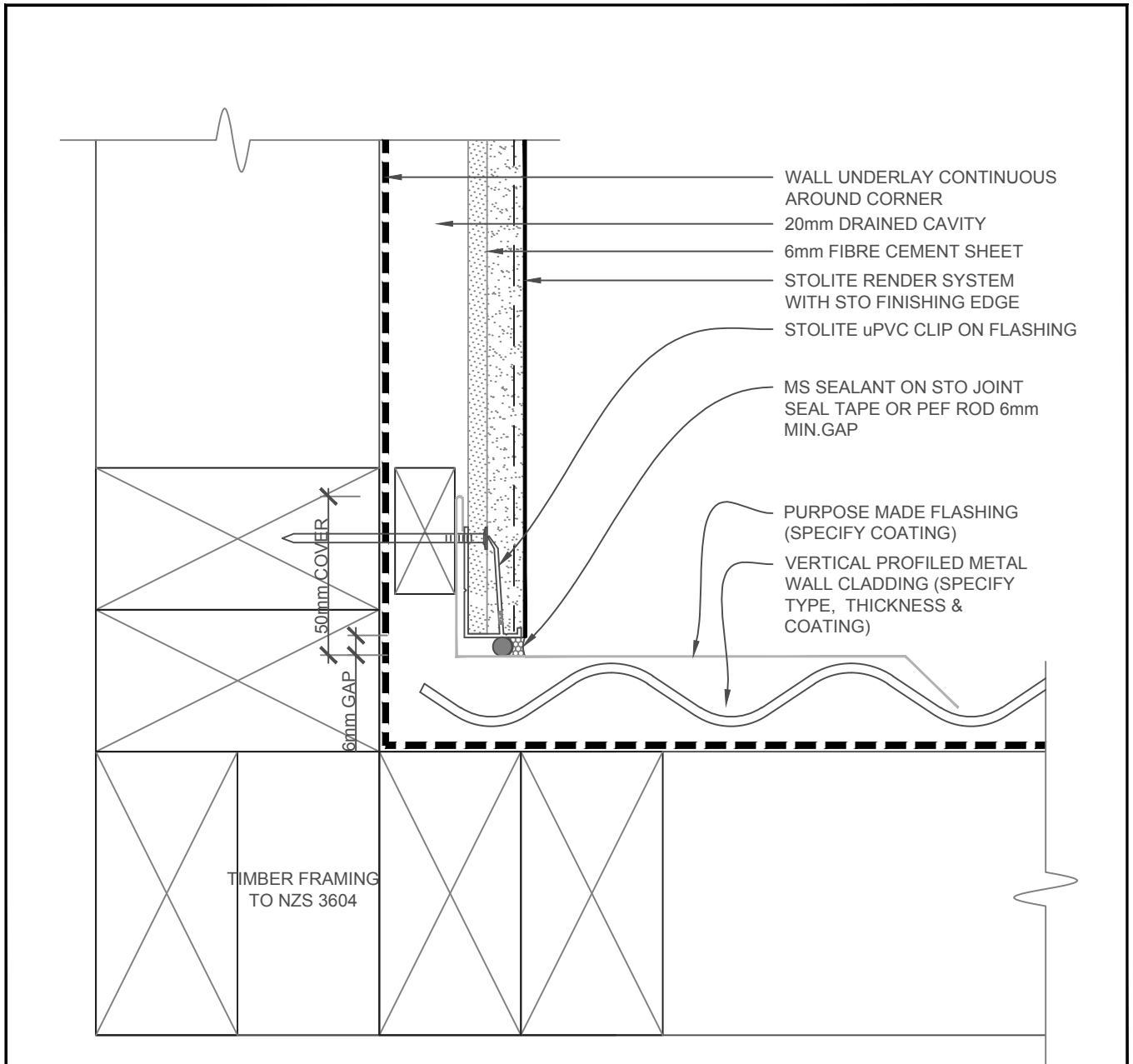
1. REFER TO E2/AS1 FOR COMPLIANT PROFILES AND FLASHINGS
2. HORIZONTAL PROFILE METAL WALL CLADDING IS FIXED ON A **DRAINED CAVITY**
3. VERTICAL PROFILE METAL WALL CLADDING IS **DIRECT FIXED** OVER A ROOF UNDERLAY. FIXINGS IN ACCORDANCE WITH E2/AS1
4. IN EXTRA HIGH WIND ZONES INCREASE FLASHING COVER TO 60mm MIN. AND USE A RIGID UNDERLAY

SCALE 1:2

STOLITE SYSTEM	STOLITE CONSTRUCTION SYSTEM	SL 853
	HORIZ.JUNCTION HORIZ.PROFILED METAL/STOLITE	2017



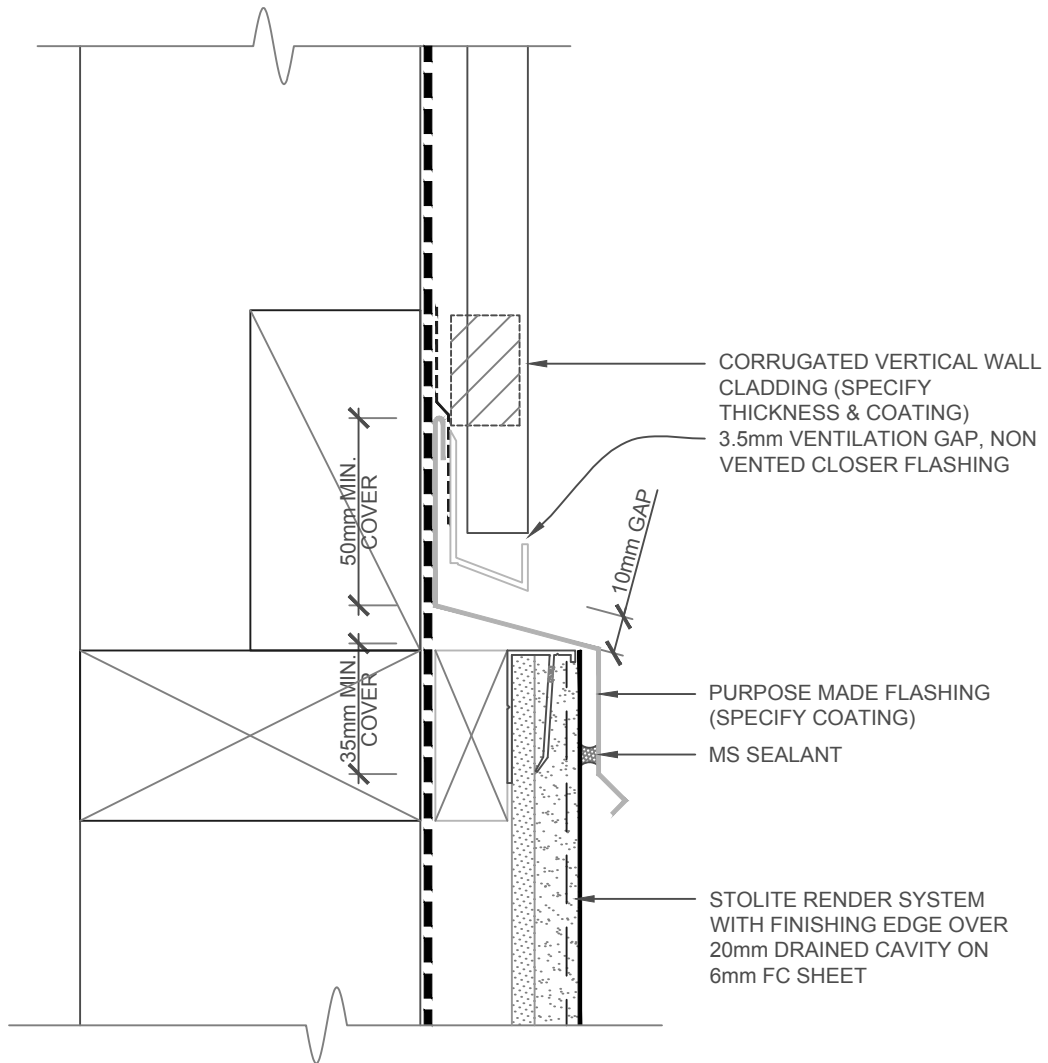
The information contained on this page is based on our experience and research at the date of issue. The detail is for use by Registered Architects, Licensed Designers or Chartered Engineers to assist in developing project details using Sto Systems. Stoanz Ltd reserve the right to alter or update information at any time without prior notice and it is the responsibility of the designer, project manager or Sto contractor to insure they have and use the current Sto details and specifications on site.



REFER TO E2/AS1 FOR COMPLIANT PROFILES AND FLASHINGS
 HORIZONTAL PROFILE METAL WALL CLADDING IS FIXED ON A DRAINED CAVITY
 VERTICAL PROFILE METAL WALL CLADDING IS DIRECT FIXED OVER A ROOF UNDERLAY.
 FIXINGS IN ACCORDANCE WITH E2/AS1

SCALE 1:2

STOLITE SYSTEM	STOLITE CONSTRUCTION SYSTEM	SL 855
	INT.CORNER - VERTICAL PROFILED METAL/STOLITE	2017



1. REFER TO E2/AS1 FOR COMPLIANT PROFILES AND FLASHINGS
2. HORIZONTAL PROFILE METAL WALL CLADDING IS FIXED ON A **DRAINED CAVITY**
3. VERTICAL PROFILE METAL WALL CLADDING IS **DIRECT FIXED** OVER A ROOF UNDERLAY. FIXING IN ACCORDANCE WITH E2/AS1
4. IN EXTRA HIGH WIND ZONES INCREASE FLASHING COVER TO 60mm MIN. AND USE A RIGID UNDERLAY

SCALE 1:2

STOLITE SYSTEM	STOLITE CONSTRUCTION SYSTEM	SL 856
	HORIZ.JUNCTION - VERTICAL PROFILED METAL/STOLITE	2017

The information contained on this page is based on our experience and research at the date of issue. The detail is for use by Registered Architects, Licensed Designers or Chartered Engineers to assist in developing project details using Sto Systems. Stoanz Ltd reserve the right to alter or update information at any time without prior notice and it is the responsibility of the designer, project manager or Sto contractor to insure they have and use the current Sto details and specifications on site.