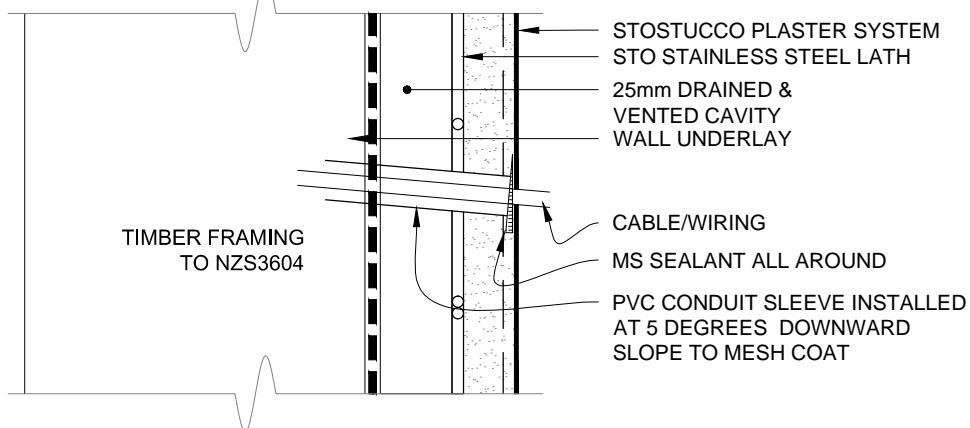


1. DOWNPIPE/CLIP - SADDLE DETAIL



2. WIRING PENETRATION DETAIL

NOTE: ENSURE THE AMOUNT OF PENETRATIONS THROUGH THE SYSTEM IS KEPT TO A MINIMUM. THE WEATHERSEALING OF ALL WIRING, ETC AS SHOWN, IS THE RESPONSIBILITY OF THE APPLICABLE TRADE

SCALE 1:2

STOSTUCCO SYSTEM	STOSTUCCO CONSTRUCTION SYSTEM	SS 355
	DOWNPIPE SADDLE FIXING & WIRING DETAILS	2014

The information contained in this detail is based on our experience and testing and represents the latest information available at the date of issue. This detail is intended for use by the design professional and users of Sto products to assist in developing specific project details to be used in conjunction with a Sto Specification. We reserve the right to alter or update information at any time without prior notice & it is the responsibility of the specifier and/or the project manager to insure that they have the current Sto details and specifications.