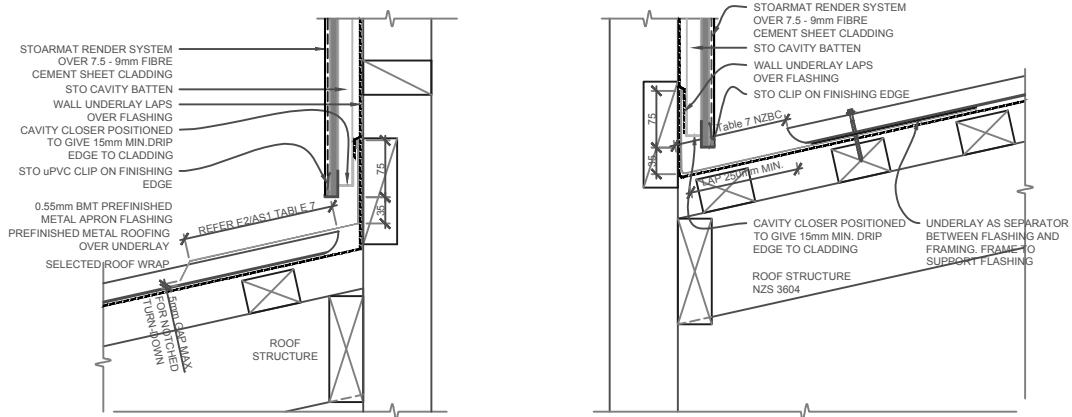


SCALE 1:20
FRAMED CHIMNEY

NOTE:
 SUITABLE FOR RECTANGULAR PENETRATIONS UP TO 1200mm WIDE.
 ROOF PITCH MUST BE 10° or HIGHER - REFER TO E2/AS1 TABLE 9 or 17 FOR MAX. ROOF LENGTH ABOVE PENETRATIONS. BLOCKING REQUIRED FOR PENETRATIONS OVER 200mm.
 FLASHING SHOWN IS MINIMUM REQUIREMENT FOR COMPLIANCE WITH E2/AS1. REFER SPECIFIED ROOFING MANUFACTURER FOR SPECIFIC DETAILS RELATING TO CRICKET FLASHING IF USED



SCALE 1:10

STOPOREN FACADE	STOPOREN FACADE SYSTEM	PP 710
	FRAMED CHIMNEY	2018

The information contained on this page is based on our experience and research at the date of issue. The detail is for use by Registered Architects, Licensed Designers or Chartered Engineers to assist in developing project details using Sto Systems. Stoanz Ltd reserve the right to alter or update information at any time without prior notice and it is the responsibility of the designer, project manager or Sto contractor to insure they have and use the current Sto details and specifications on site.