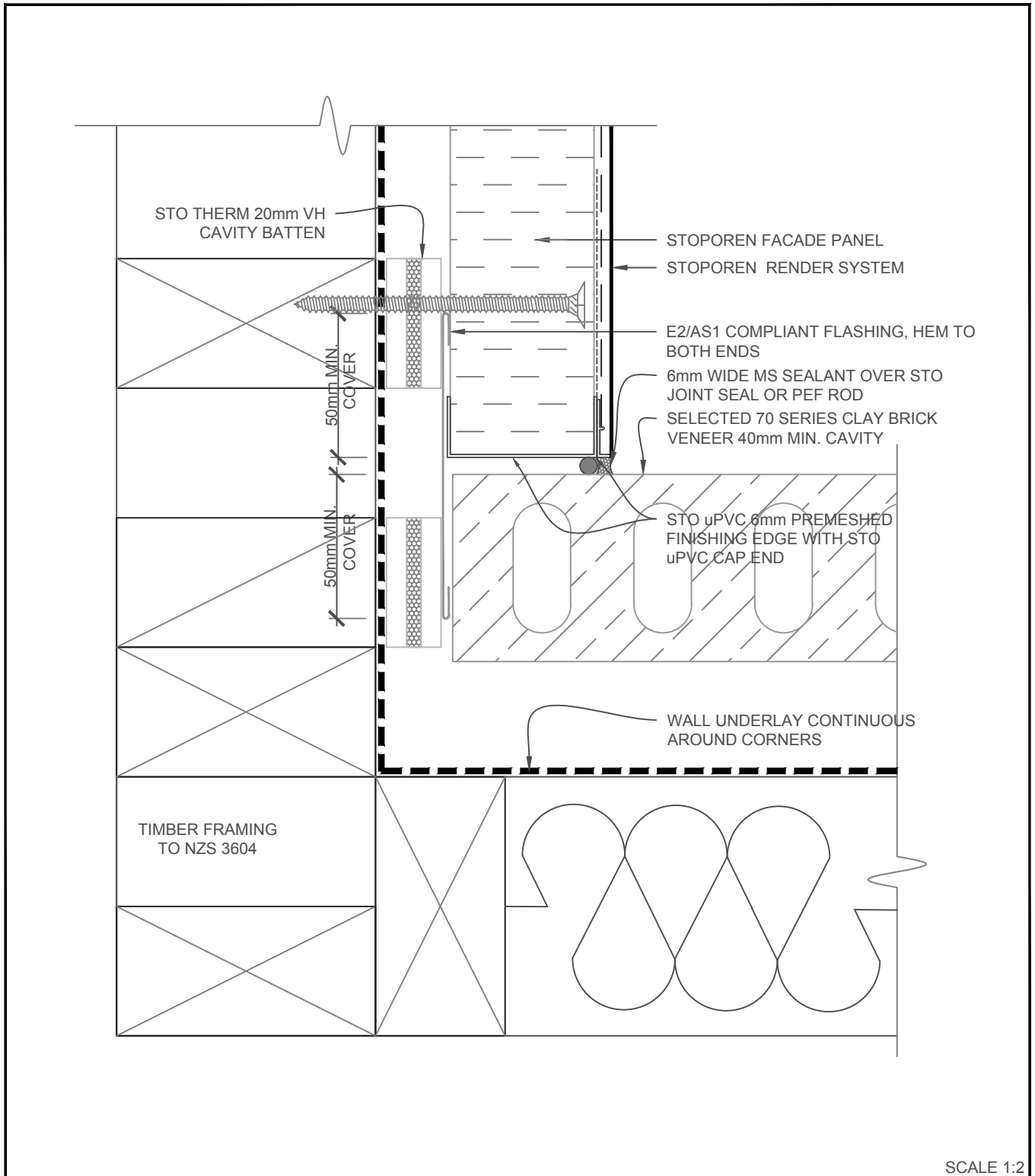


SCALE 1:2

<b>STOPOREN FACADE</b>	<b>STOPOREN FACADE SYSTEM</b>	<b>PP 810</b>
	<b>EXTERNAL CORNER BRICK VENEER/STOPOREN</b>	<b>2018</b>

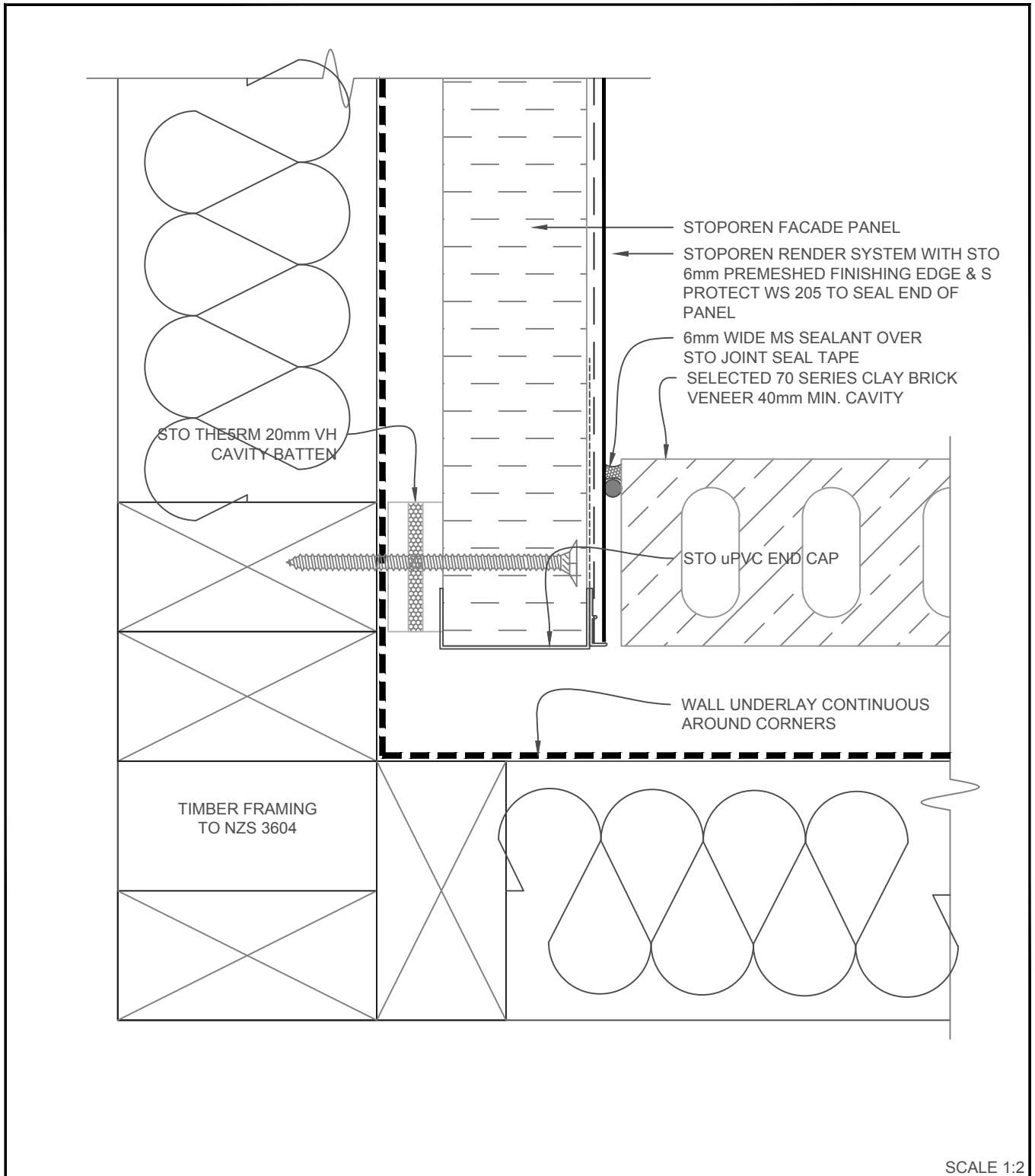
The information contained on this page is based on our experience and research at the date of issue. The detail is for use by Registered Architects, Licensed Designers or Chartered Engineers to assist in developing project details using Sto Systems. Stoanz Ltd reserve the right to alter or update information at any time without prior notice and it is the responsibility of the designer, project manager or Sto contractor to insure they have and use the current Sto details and specifications on site.



SCALE 1:2

<b>STOPOREN FACADE</b>	<b>STOPOREN FACADE SYSTEM</b>	<b>PP 811</b>
	<b>INT. CNR BRICK VENEER/STOPOREN - OPT 1</b>	<b>2018</b>

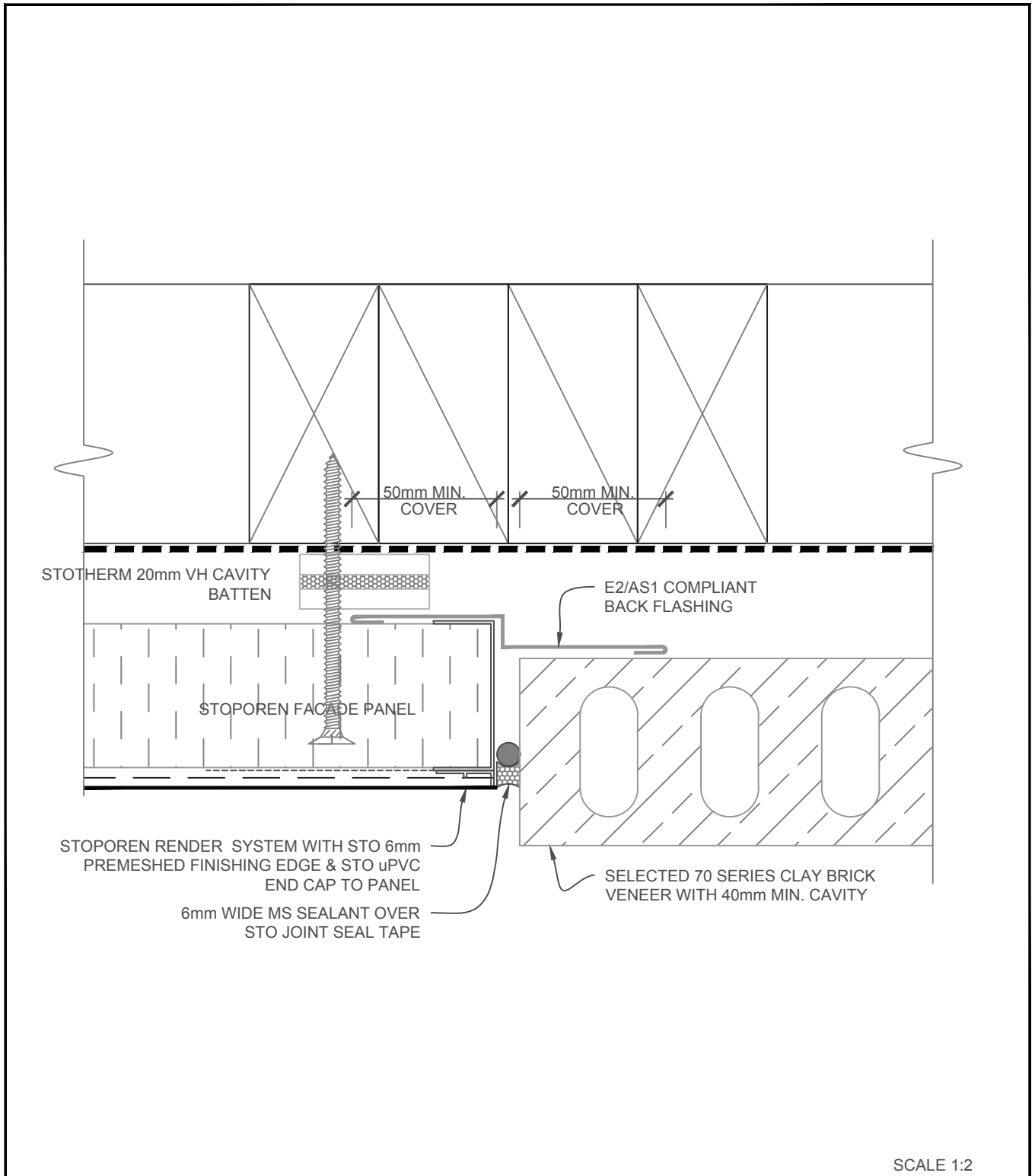
The information contained on this page is based on our experience and research at the date of issue. The detail is for use by Registered Architects, Licensed Designers or Chartered Engineers to assist in developing project details using Sto Systems. Stoanz Ltd reserve the right to alter or update information at any time without prior notice and it is the responsibility of the designer, project manager or Sto contractor to insure they have and use the current Sto details and specifications on site.



SCALE 1:2

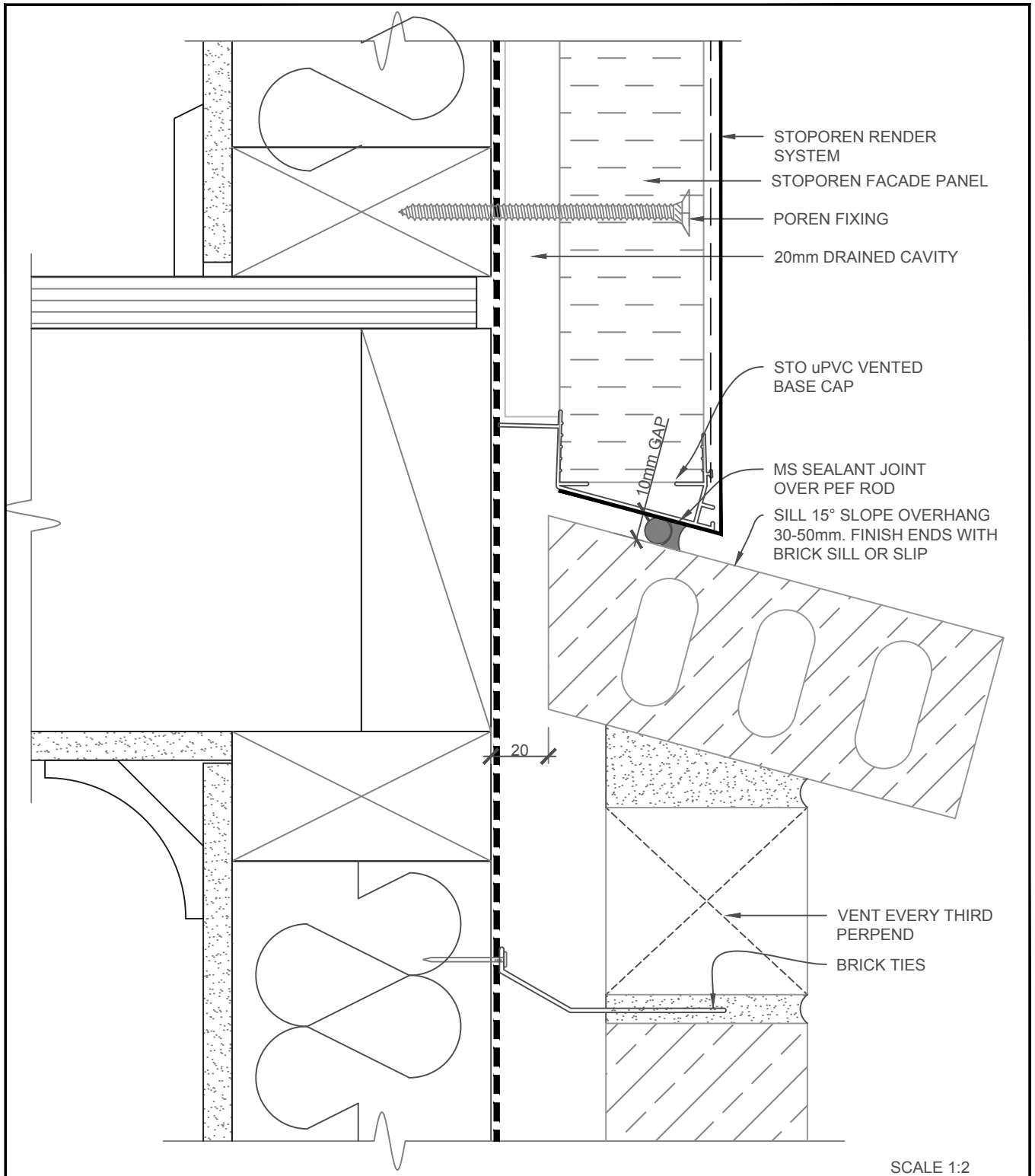
<b>STOPOREN FACADE</b>	<b>STOPOREN FACADE SYSTEM</b>	<b>PP 812</b>
	<b>INT. CNR BRICK VENEER/STOPOREN - OPT 2</b>	<b>2018</b>

The information contained on this page is based on our experience and research at the date of issue. The detail is for use by Registered Architects, Licensed Designers or Chartered Engineers to assist in developing project details using Sto Systems. Stoanz Ltd reserve the right to alter or update information at any time without prior notice and it is the responsibility of the designer, project manager or Sto contractor to insure they have and use the current Sto details and specifications on site.



<b>STOPOREN FACADE</b>	<b>STOPOREN FACADE SYSTEM</b>	<b>PP 813</b>
	<b>VERTICAL JUNCTION - BRICK VENEER/STOPOREN</b>	<b>2018</b>

The information contained on this page is based on our experience and research at the date of issue. The detail is for use by Registered Architects, Licensed Designers or Chartered Engineers to assist in developing project details using Sto Systems. Stoanz Ltd reserve the right to alter or update information at any time without prior notice and it is the responsibility of the designer, project manager or Sto contractor to insure they have and use the current Sto details and specifications on site.



<b>STOPOREN FACADE</b>	<b>STOPOREN FACADE SYSTEM</b>	<b>PP 814</b>
	<b>HORIZ. JUNCTION - BRICK VENEER/STOPOREN</b>	<b>2018</b>

The information contained on this page is based on our experience and research at the date of issue. The detail is for use by Registered Architects, Licensed Designers or Chartered Engineers to assist in developing project details using Sto Systems. Stoanz Ltd reserve the right to alter or update information at any time without prior notice and it is the responsibility of the designer, project manager or Sto contractor to insure they have and use the current Sto details and specifications on site.