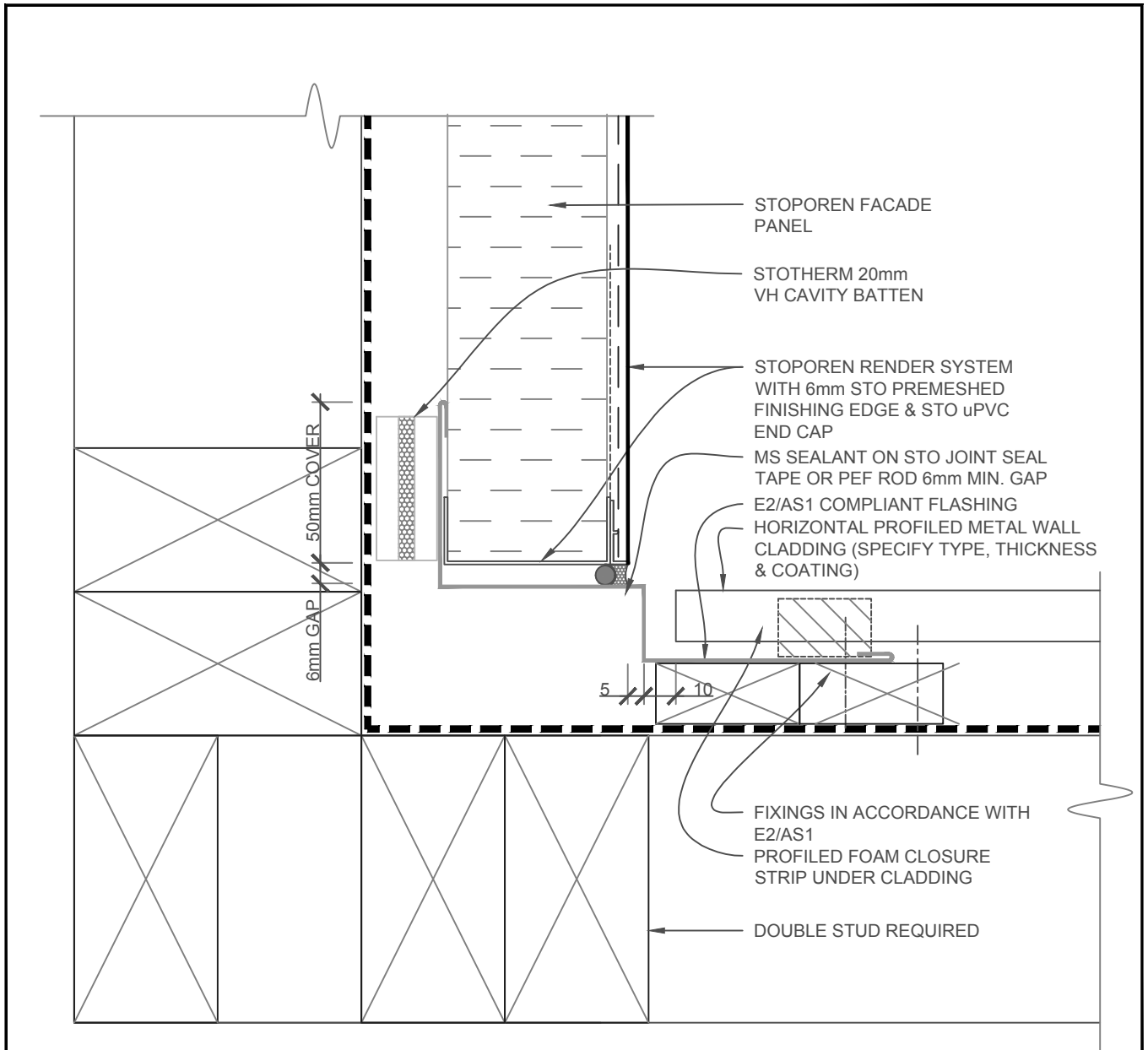


STOPOREN FACADE	STOPOREN FACADE SYSTEM	PP 850
	EXT. CORNER - HORIZ. PROFILED METAL/STOPOREN	2018

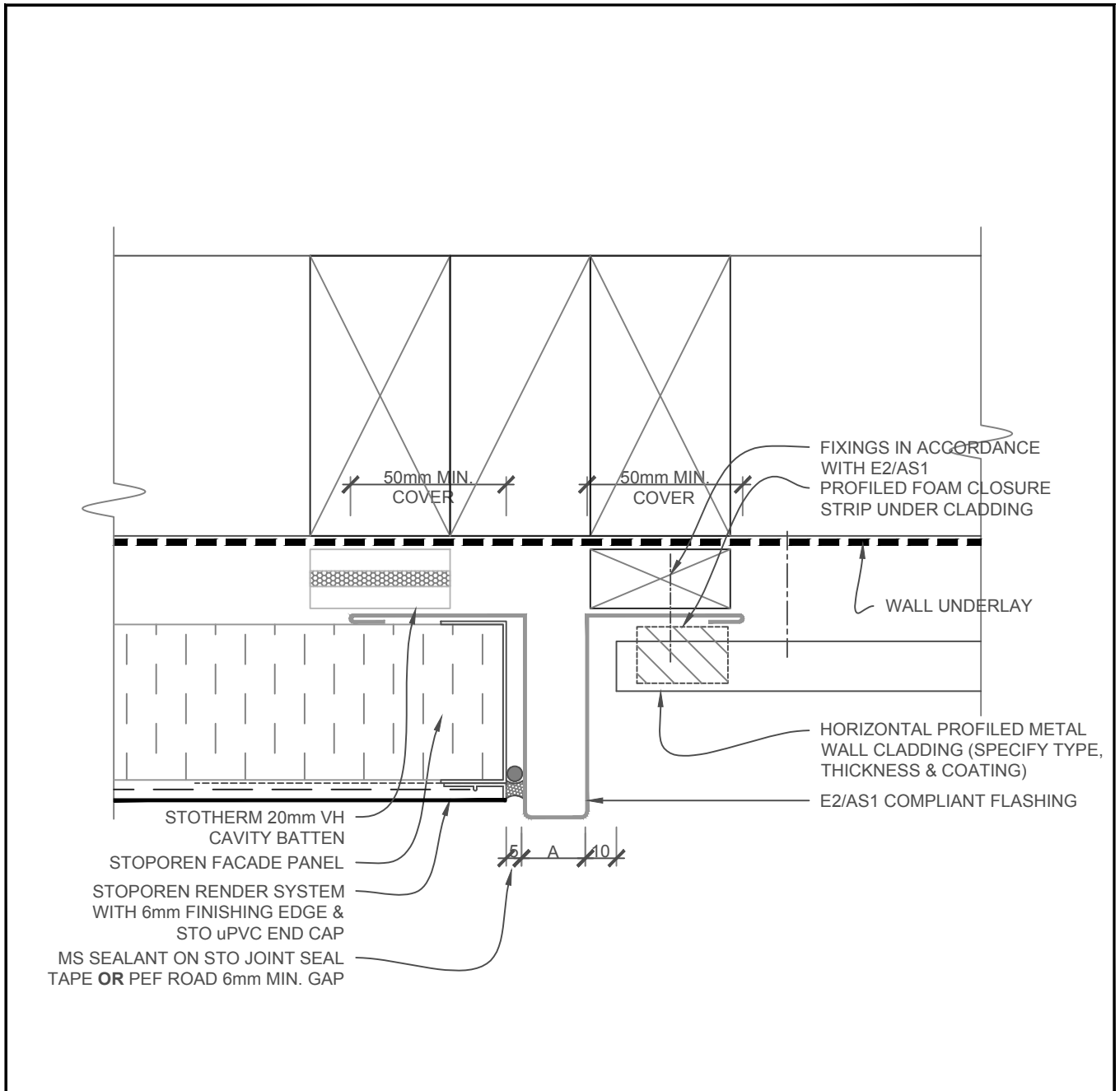
The information contained on this page is based on our experience and research at the date of issue. The detail is for use by Registered Architects, Licensed Designers or Chartered Engineers to assist in developing project details using Sto Systems. Stoanz Ltd reserve the right to alter or update information at any time without prior notice and it is the responsibility of the designer, project manager or Sto contractor to insure they have and use the current Sto details and specifications on site.



REFER TO E2/AS1 FOR COMPLIANT PROFILES AND FLASHINGS
 HORIZONTAL PROFILE METAL WALL CLADDING IS FIXED ON A DRAINED CAVITY
 VERTICAL PROFILE METAL WALL CLADDING IS DIRECT FIXED OVER A ROOF UNDERLAY

SCALE 1:2

STOPOREN FACADE	STOPOREN FACADE SYSTEM	PP 851
	INT. CORNER - HORIZ. PROFILED METAL/STOPOREN	2018

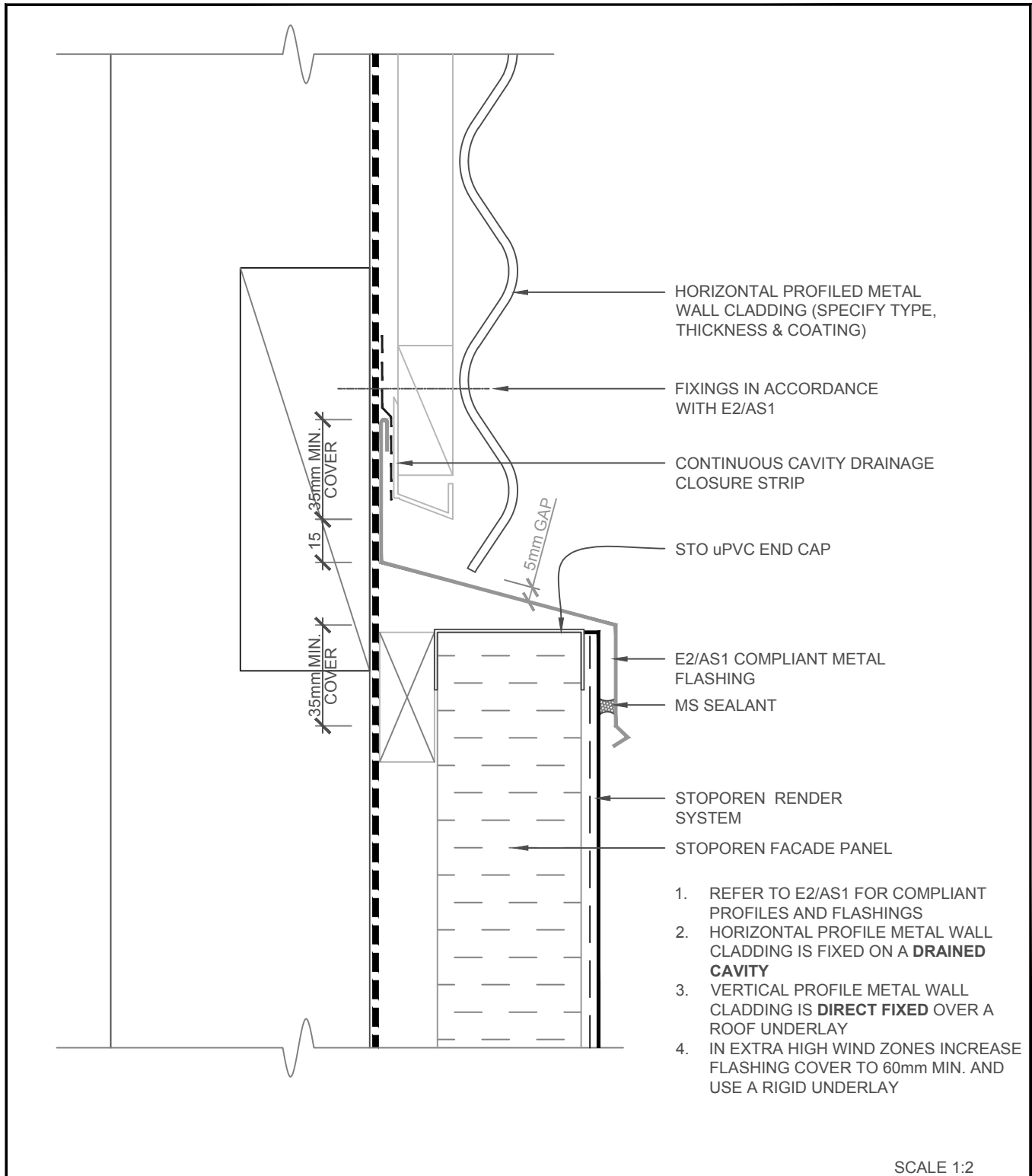


NOTE:
 A = CHECK WITH SHEET METAL FOLDER A NARROW NECK
 MAY REQUIRE A WELDED JOINT OR TOP HAT

REFER TO E2/AS1 FOR COMPLIANT PROFILES AND FLASHINGS
 HORIZONTAL PROFILE METAL WALL CLADDING IS FIXED ON A DRAINED CAVITY
 VERTICAL PROFILE METAL WALL CLADDING IS DIRECT FIXED OVER A ROOF UNDERLAY

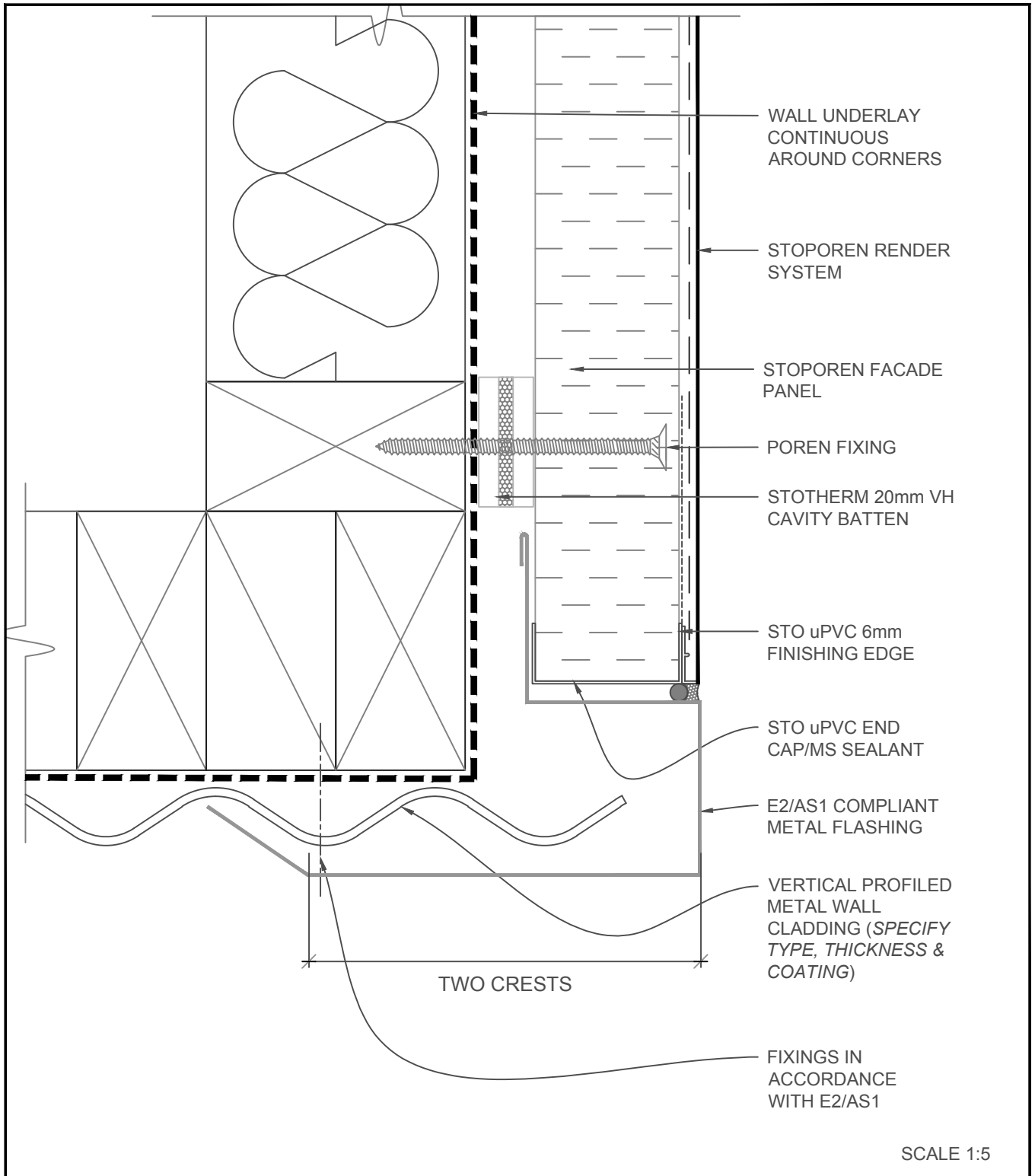
SCALE 1:2

STOPOREN FACADE	STOPOREN FACADE SYSTEM	PP 852
	VERT. JUNCTION - HORIZ.PROFILED METAL/STOPOREN	2018



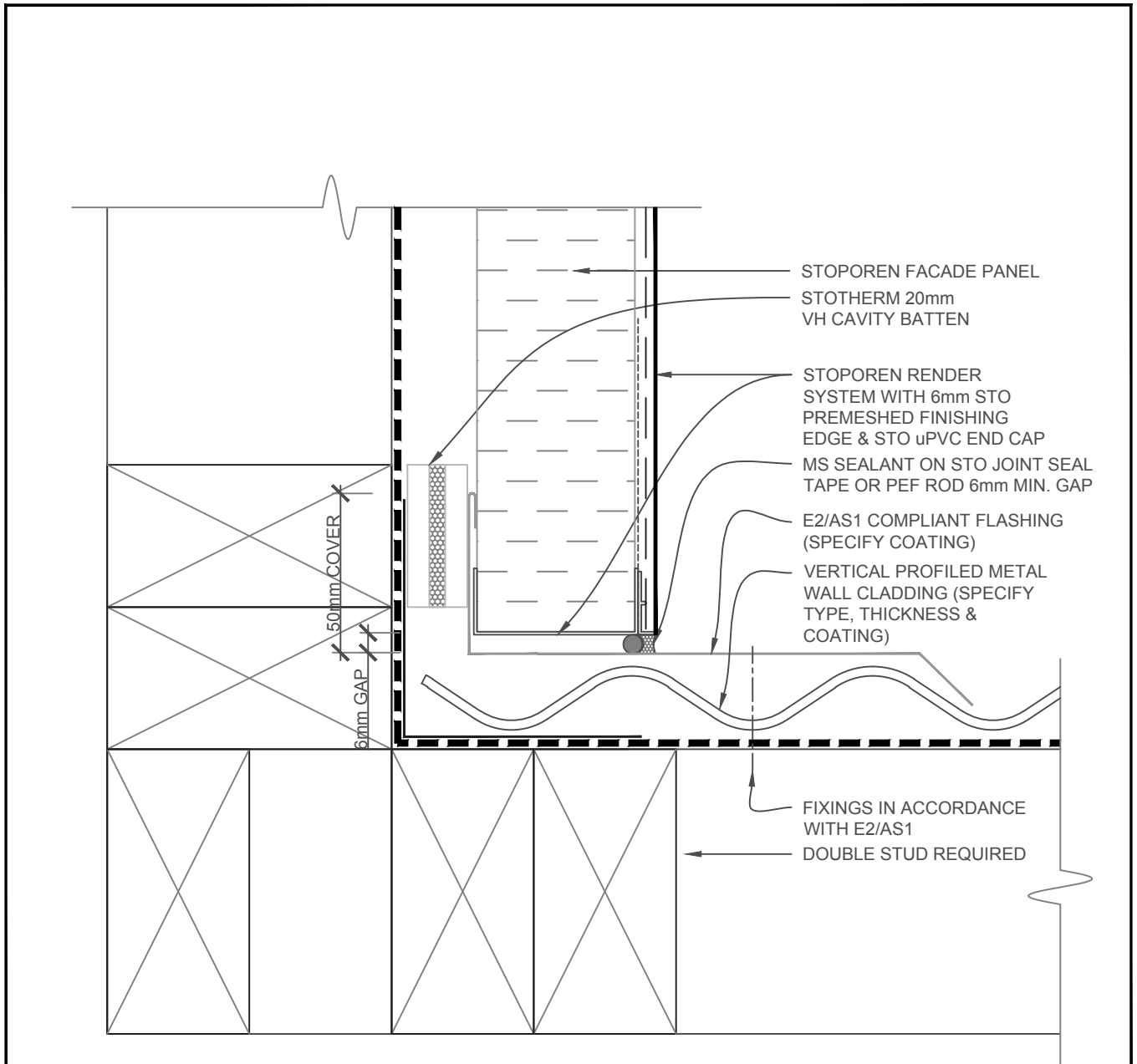
STOPOREN FACADE	STOPOREN FACADE SYSTEM	PP 853
	HORIZ. JUNCTION - HORIZ.PROFILED METAL/STOPOREN	2018

The information contained on this page is based on our experience and research at the date of issue. The detail is for use by Registered Architects, Licensed Designers or Chartered Engineers to assist in developing project details using Sto Systems. Stoanz Ltd reserve the right to alter or update information at any time without prior notice and it is the responsibility of the designer, project manager or Sto contractor to insure they have and use the current Sto details and specifications on site.



STOPOREN FACADE	STOPOREN FACADE SYSTEM	PP 854
	EXT. CORNER - VERTICAL PROFILED METAL/STOPOREN	2018

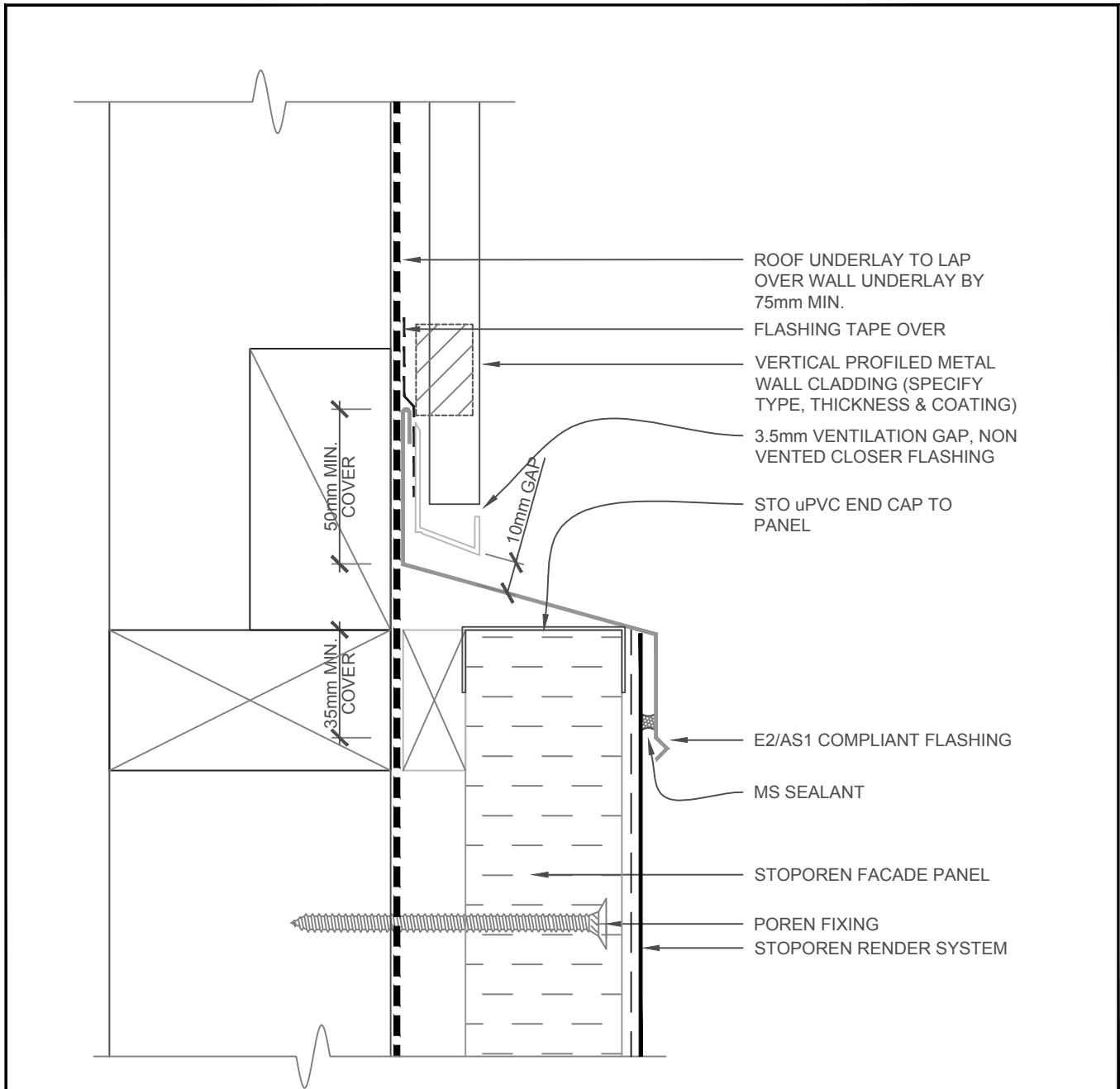
The information contained on this page is based on our experience and research at the date of issue. The detail is for use by Registered Architects, Licensed Designers or Chartered Engineers to assist in developing project details using Sto Systems. Stoanz Ltd reserve the right to alter or update information at any time without prior notice and it is the responsibility of the designer, project manager or Sto contractor to insure they have and use the current Sto details and specifications on site.



REFER TO E2/AS1 FOR COMPLIANT PROFILES AND FLASHINGS
 HORIZONTAL PROFILE METAL WALL CLADDING IS FIXED ON A DRAINED CAVITY
 VERTICAL PROFILE METAL WALL CLADDING IS DIRECT FIXED OVER A ROOF UNDERLAY

SCALE 1:2

STOPOREN FACADE	STOPOREN FACADE SYSTEM	PP 855
	INT. CORNER - VERTICAL PROFILED METAL/STOPOREN	2018



1. REFER TO E2/AS1 FOR COMPLIANT PROFILES AND FLASHINGS
2. HORIZONTAL PROFILE METAL WALL CLADDING IS FIXED ON A **DRAINED CAVITY**
3. VERTICAL PROFILE METAL WALL CLADDING IS **DIRECT FIXED** OVER A ROOF UNDERLAY. FIXING IN ACCORDANCE WITH E2/AS1
4. IN EXTRA HIGH WIND ZONES INCREASE FLASHING COVER TO 60mm MIN. AND USE A RIGID UNDERLAY

SCALE 1:2

STOPOREN FACADE	STOPOREN FACADE SYSTEM	PP 856
	HORIZ. JUNCTION - VERT. PROFILED METAL/STOPOREN	2018

The information contained on this page is based on our experience and research at the date of issue. The detail is for use by Registered Architects, Licensed Designers or Chartered Engineers to assist in developing project details using Sto Systems. Stoanz Ltd reserve the right to alter or update information at any time without prior notice and it is the responsibility of the designer, project manager or Sto contractor to insure they have and use the current Sto details and specifications on site.