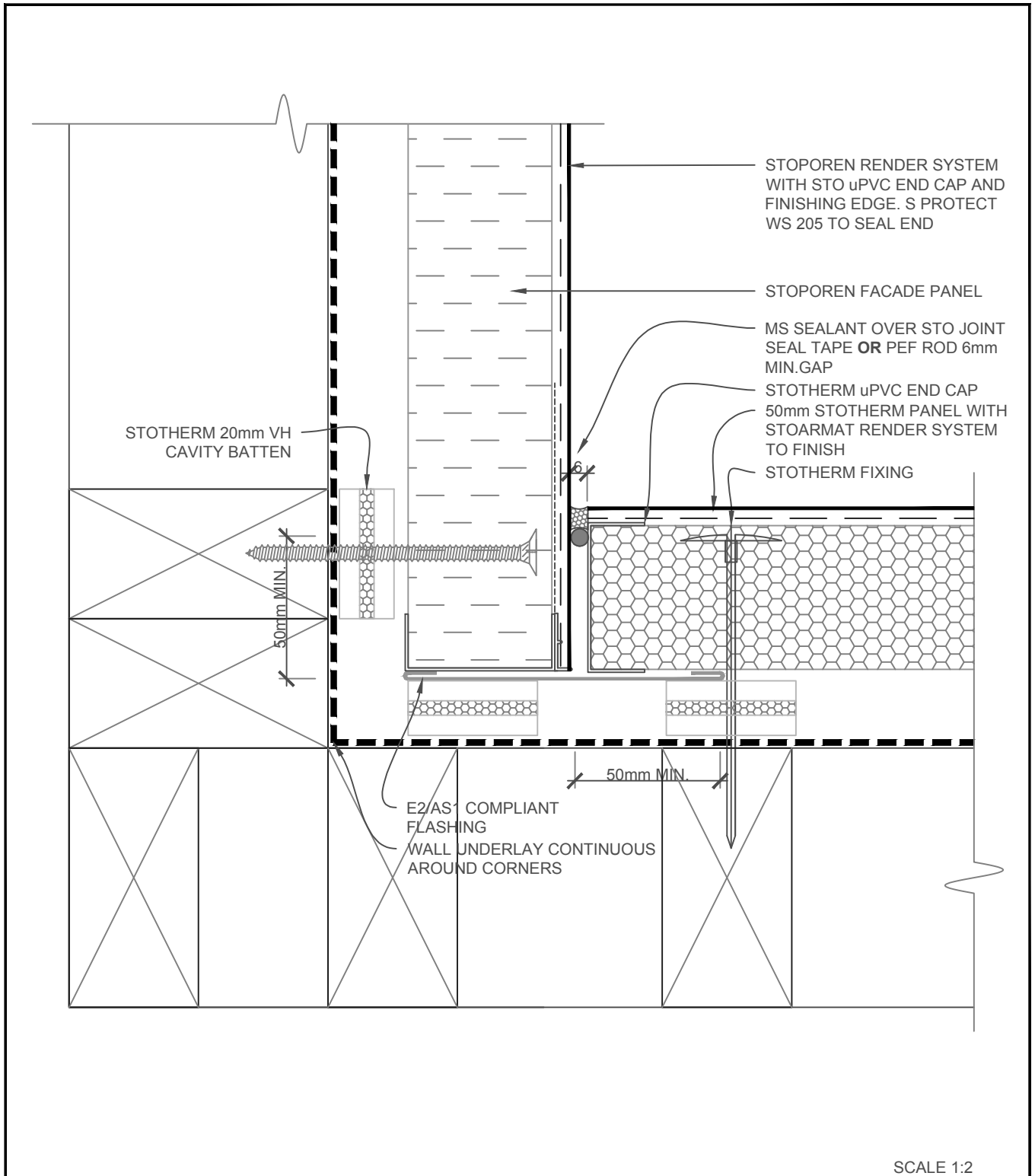


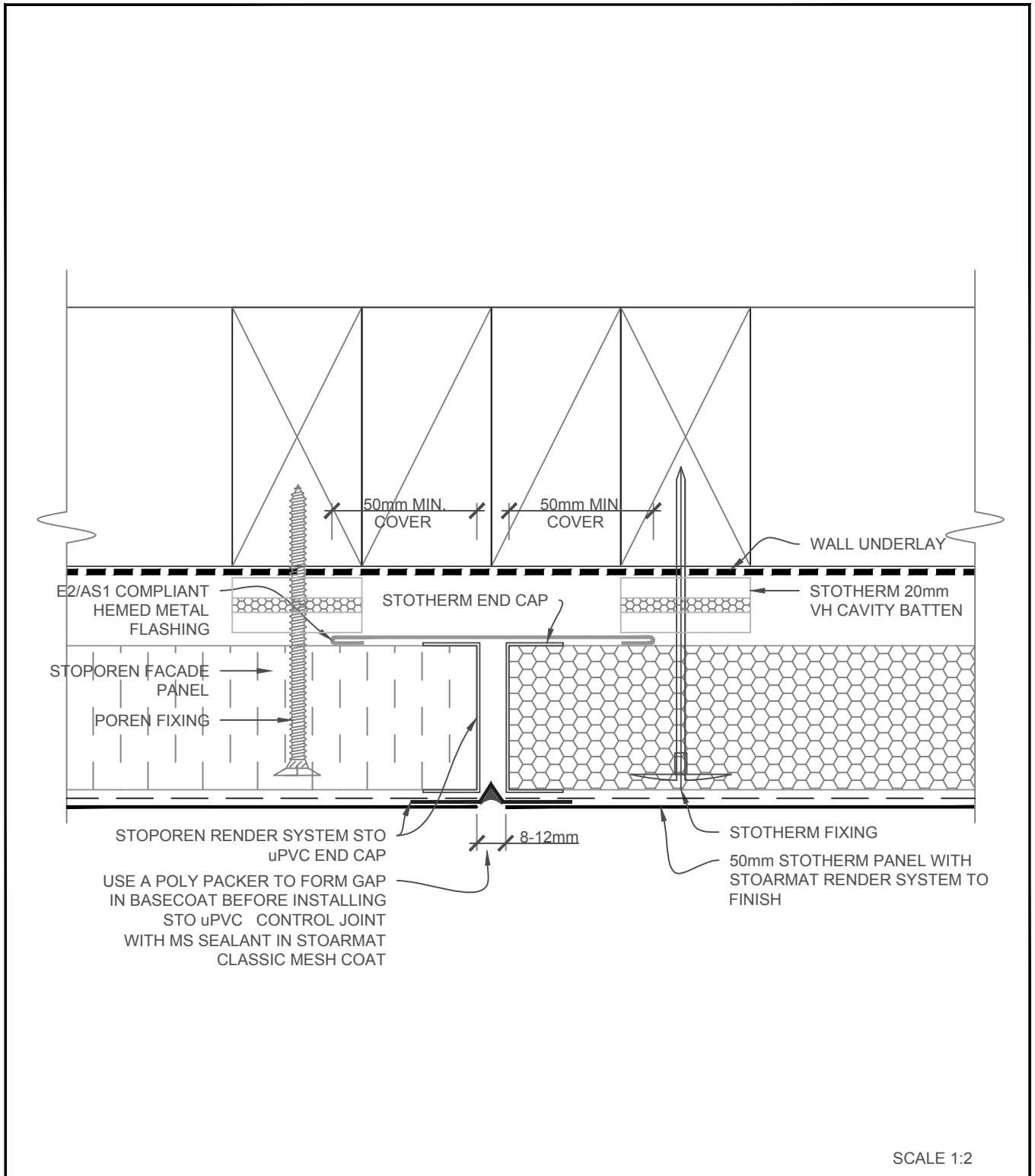
STOPOREN FACADE	STOPOREN FACADE SYSTEM	PP 860
	EXTERNAL CORNER - STOTHERM/STOPOREN	2018

The information contained on this page is based on our experience and research at the date of issue. The detail is for use by Registered Architects, Licensed Designers or Chartered Engineers to assist in developing project details using Sto Systems. Stoanz Ltd reserve the right to alter or update information at any time without prior notice and it is the responsibility of the designer, project manager or Sto contractor to insure they have and use the current Sto details and specifications on site.



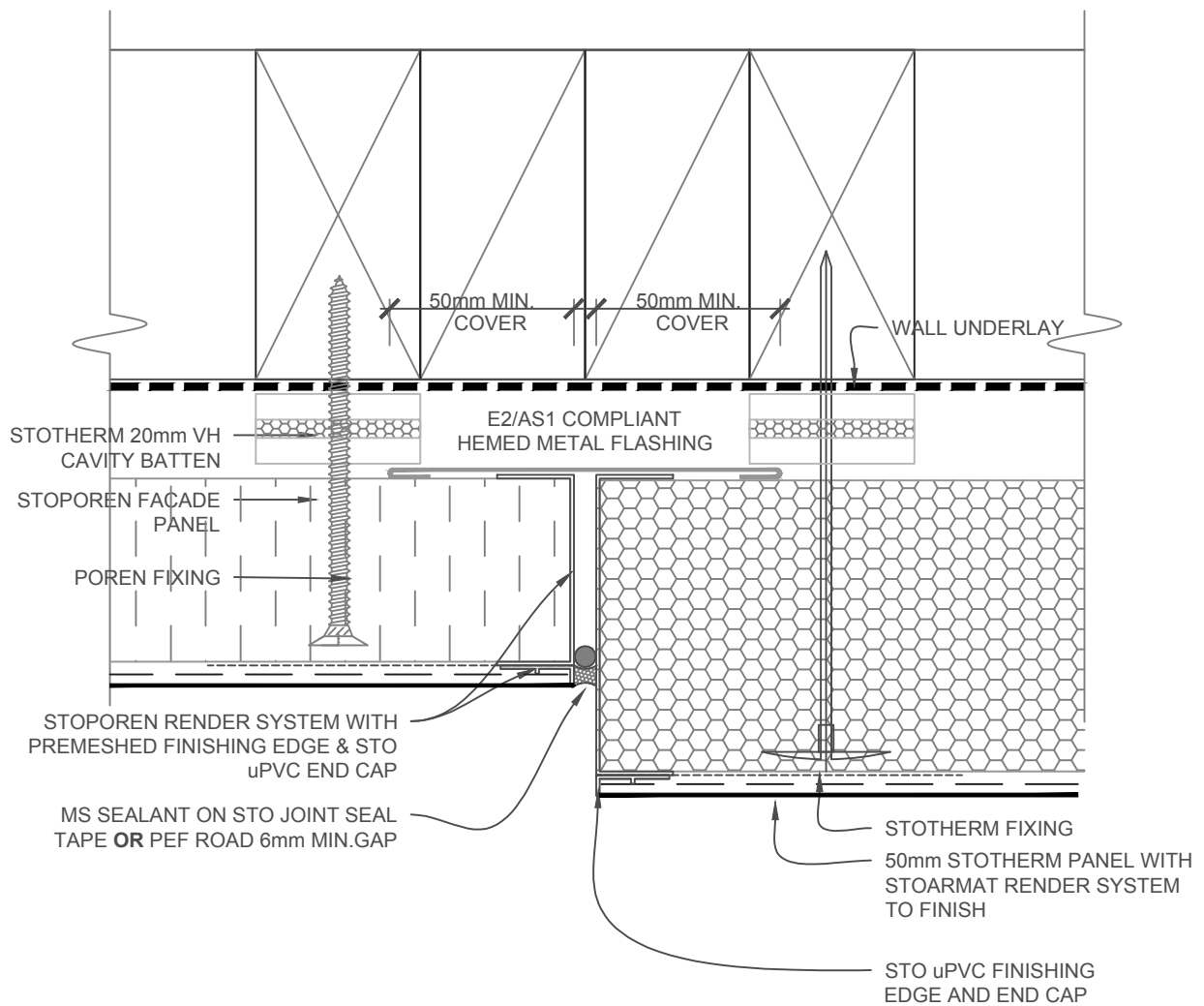
STOPOREN FACADE	STOPOREN FACADE SYSTEM	PP 861
	INTERNAL CORNER - STOTHERM/STOPOREN	2018

The information contained on this page is based on our experience and research at the date of issue. The detail is for use by Registered Architects, Licensed Designers or Chartered Engineers to assist in developing project details using Sto Systems. Stoanz Ltd reserve the right to alter or update information at any time without prior notice and it is the responsibility of the designer, project manager or Sto contractor to insure they have and use the current Sto details and specifications on site.



STOPOREN FACADE	STOPOREN FACADE SYSTEM	PP 862
	VERTICAL JOINT - 50mm STOTHERM/STOPOREN	2018

The information contained on this page is based on our experience and research at the date of issue. The detail is for use by Registered Architects, Licensed Designers or Chartered Engineers to assist in developing project details using Sto Systems. Stoanz Ltd reserve the right to alter or update information at any time without prior notice and it is the responsibility of the designer, project manager or Sto contractor to insure they have and use the current Sto details and specifications on site.

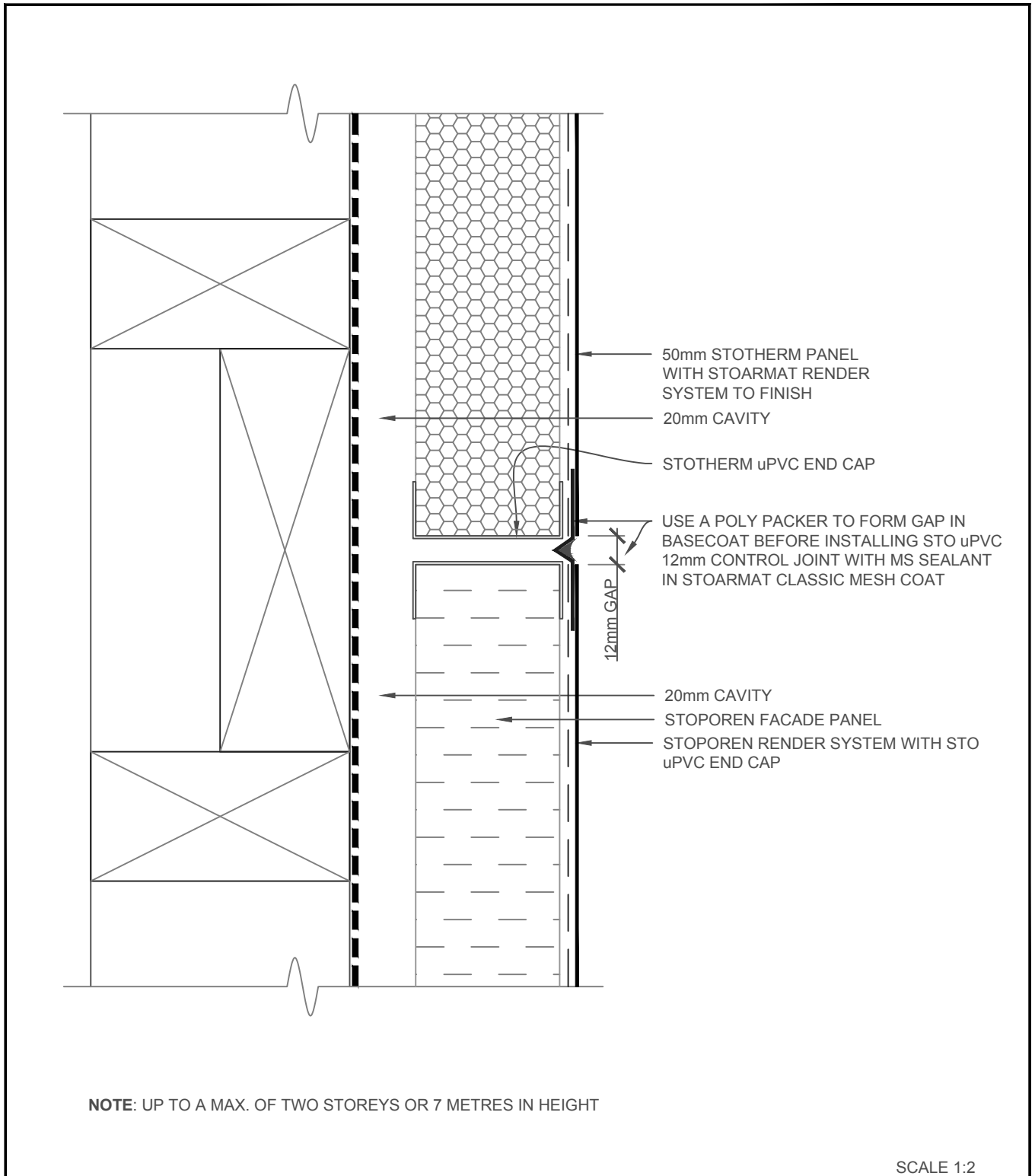


NOTE: ADJUST FOR SELECTED STOTHERM PANEL SIZES - 60, 80 OR 100mm (SHOWN - 80mm PANEL)

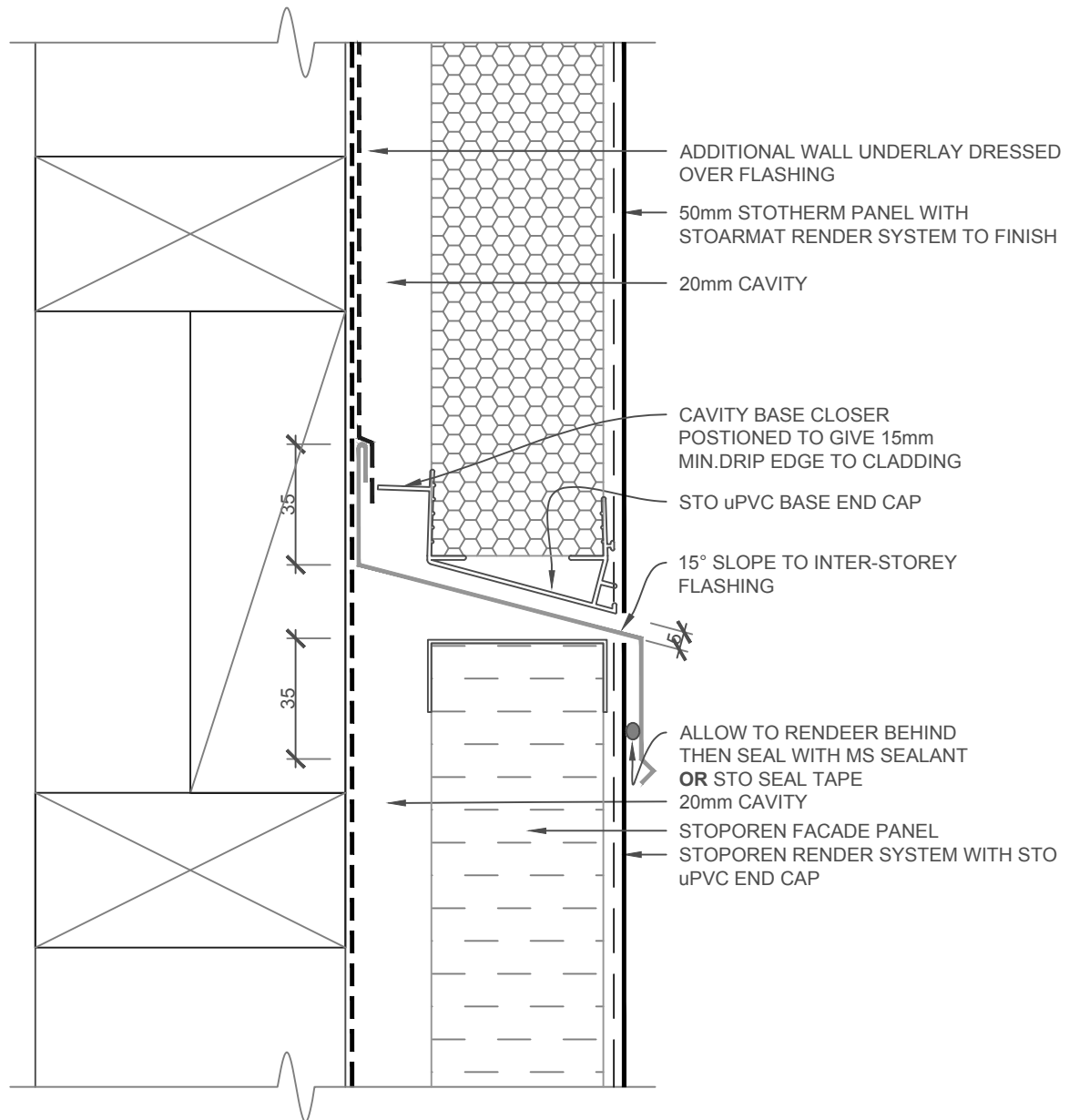
SCALE 1:2

STOPOREN FAÇADE	STOPOREN FAÇADE SYSTEM	PP 863
	VERTICAL JOINT - 80mm STOTHERM/STOPOREN	2018

The information contained on this page is based on our experience and research at the date of issue. The detail is for use by Registered Architects, Licensed Designers or Chartered Engineers to assist in developing project details using Sto Systems. Stoanz Ltd reserve the right to alter or update information at any time without prior notice and it is the responsibility of the designer, project manager or Sto contractor to insure they have and use the current Sto details and specifications on site.



STOPOREN FACADE	STOPOREN FACADE SYSTEM	PP 864
	INTER-STOREY JUNCTION - STOTHERM/STOPOREN	2018



1. DRAINED INTER-STOREY FLASHING REQUIRED TO LIMIT CONTINUOUS CAVITY CONSTRUCTION TO TWO (2) STOREYS, GABLE END OR 7 METRES
2. IN EXTRA HIGH WIND ZONES INCREASE FLASHING UPSTAND TO 60mm MIN. AND USE A RIGID UNDERLAY

SCALE 1:2

STOPEN FACADE	STOPEN FACADE SYSTEM	PP 865
	THIRD STOREY DRAINED INTER-STOREY JUNCTION	2018