

## STO RENDER BRICK PLASTER SYSTEM

### SS505 STOARMAT MIRAL PLASTER SYSTEM

BRANZ APPRAISAL CERTIFICATE NO. 515

INCORPORATING:

1. STO FLEXYL WATERPROOFING 18kg PAIL  
PLUS CEMENT EVALUATED BY BRANZ TO MEET AS/NZS 4858 AS A WATERPROOFING MEMBRANE OVER PLASTER SUBSTRATES,  
IN ACCORDANCE WITH NZBC E2/AS1.
2. LEVELLITE BASE PLASTER 20kg BAG  
MINERAL LITEWEIGHT BASE PLASTER FOR LEVELLING AND STRAIGHTENING WALLS, CAN BE MACHINE APPLIED.
3. STOARMAT PLASTER 23kg PAIL  
EUROPEAN FIBRE REINFORCED NON-CEMENT BASED CRACK RESISTANT PLASTER USED WITH EUROPEAN MESH AS A  
REINFORCEMENT PLASTER.
4. STOLIT K or MP COLOURED RENDER 25kg PAIL  
EUROPEAN FIBRE REINFORCED NON-CEMENT BASED COLOURED FINISHING RENDER AVAILABLE IN 1.0/1.5/2.0/3.0mm SIZED  
TEXTURE AND MP or MP NATURAL SPONGE FINISHED RENDER.
5. STOCOLOR MAXICRYL FACADE PAINT 15lt PAIL  
STOLASTIC COLOR FACADE PAINT 15lt PAIL  
STOLOTUSAN COLOR G 15lt PAIL

### SS500 STOMIRAL PLASTER SYSTEM

BRANZ APPRAISAL CERTIFICATE NO. 515

INCORPORATING:

1. STO FLEXYL WATERPROOFING 18kg PAIL  
PLUS CEMENT EVALUATED BY BRANZ TO MEET AS/NZS 4858 AS A WATERPROOFING MEMBRANE OVER PLASTER SUBSTRATES,  
IN ACCORDANCE WITH NZBC E2/AS1.
2. LEVELLITE BASE PLASTER 20kg BAG  
MINERAL LITEWEIGHT BASE PLASTER FOR LEVELLING AND STRAIGHTENING WALLS, CAN BE MACHINE APPLIED.
3. STOPLEX W SEALER 10lt CONTAINER  
EUROPEAN CONSOLIDATION SEALER WITH ADHESION IMPROVING, ABSORBANCY REGULATING AND WATER REPELLENT  
PROPERTIES.
4. STOLIT K or MP COLOURED RENDER 25kg PAIL  
EUROPEAN FIBRE REINFORCED NON-CEMENT BASED COLOURED FINISHING RENDER AVAILABLE IN 1.0/1.5/2.0/3.0mm SIZED  
TEXTURE AND MP or MP NATURAL SPONGE FINISHED RENDER.
5. STOCOLOR MAXICRYL FACADE PAINT 15lt PAIL  
STOLASTIC COLOR FACADE PAINT 15lt PAIL  
STOLOTUSAN COLOR G 15lt PAIL

STO RB PLASTER SYSTEM	INTRODUCTION	RB-001
		JULY 2010

The information contained in this detail is based on our experience and testing and represents the latest information available at the date of issue. This detail is intended for use by the design professional and users of Sto products to assist in developing specific project details to be used in conjunction with a Sto Specification. We reserve the right to alter or update information at any time without prior notice & it is the responsibility of the specifier and/or the project manager to insure that they have the current Sto details and specifications.

## STO DRAWING REGISTER

Drawing Description	Drawing No.
Sto Render Brick Introduction	RB-001
Sto Render Brick Index	RB-002
StoArmat Miral Plaster System on Render Brick	RB-100
StoMiral Plaster System on Render Brick	RB-101
Sto Render Brick Foundation	RB-200
Sto Render Brick Soffit Detail	RB-300
Sto Render Brick Base to StoTherm EPS	RB-400
Sto Render Brick with Tap Fixing	RB-500
Sto Render Brick with Galvanised Fixing Bracket	RB-501
Sto Render Brick Joinery Jamb Detail	RB-550
Sto Render Brick Joinery Sill Detail	RB-551
Sto Render Brick Joinery Head Detail	RB-552

### SS505 STOARMAT MIRAL PLASTER SYSTEM

ON RENDER BRICK CONSTRUCTION - BRANZ APPRAISAL CERTIFICATE 515

### SS500 STOMIRAL PLASTER SYSTEM (NON-MESH)

ON RENDER BRICK CONSTRUCTION - BRANZ APPRAISAL CERTIFICATE 515

#### GENERAL NOTES:

- Render bricks are to be laid and reinforced in accordance with the relevant New Zealand standards and the brick manufacturers specifications and drawings.
- Due care must be exercised to maintain clearances and distances so as not to compromise the componentry and weathertightness of the building system.

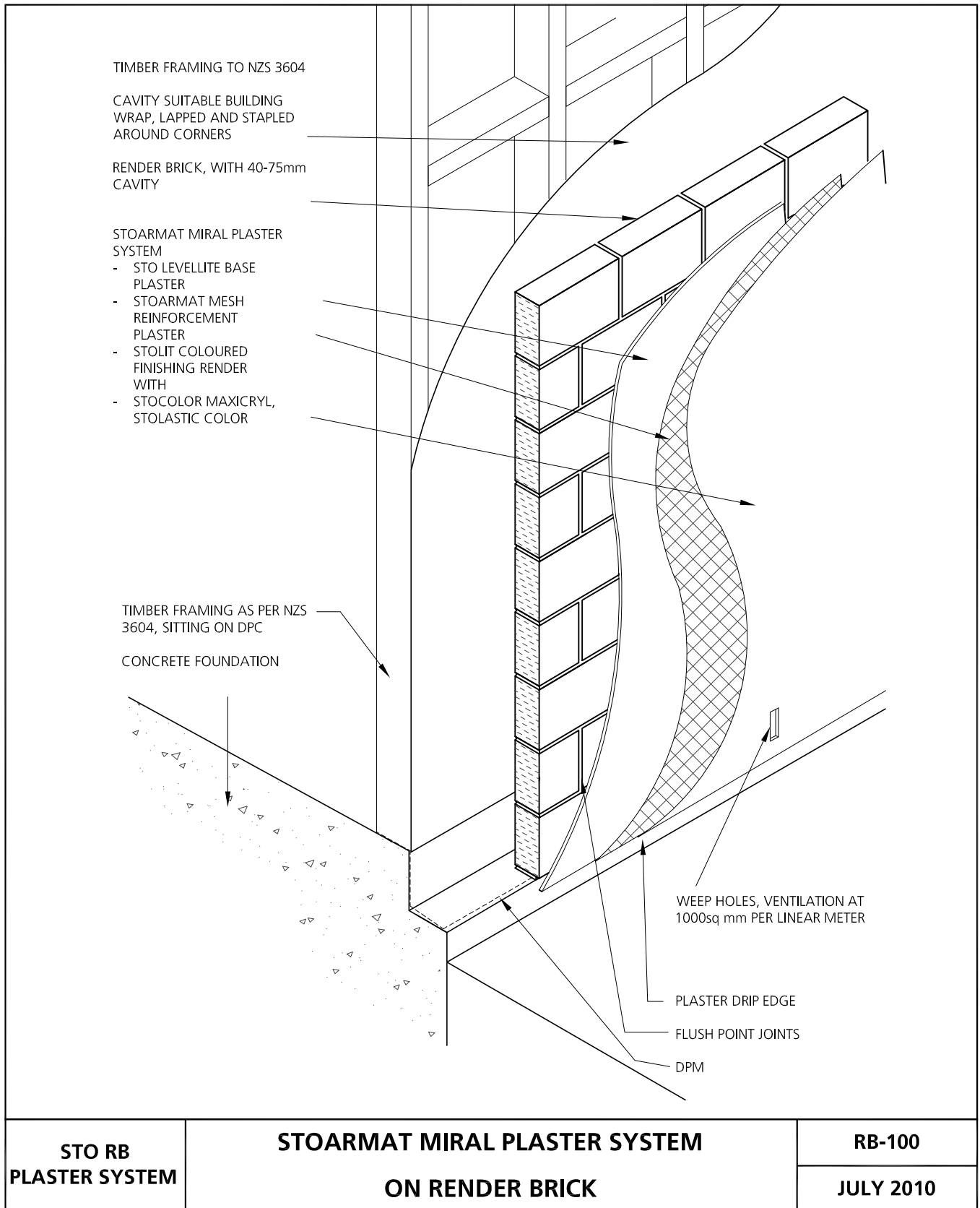
THESE DETAILS HAVE BEEN ISSUED AS A GUIDELINE ONLY TO INCORPORATE STANDARD BUILDING PRACTICES.

ALWAYS REFER TO MANUFACTURERS CURRENT DETAILS AND SPECIFICATIONS.

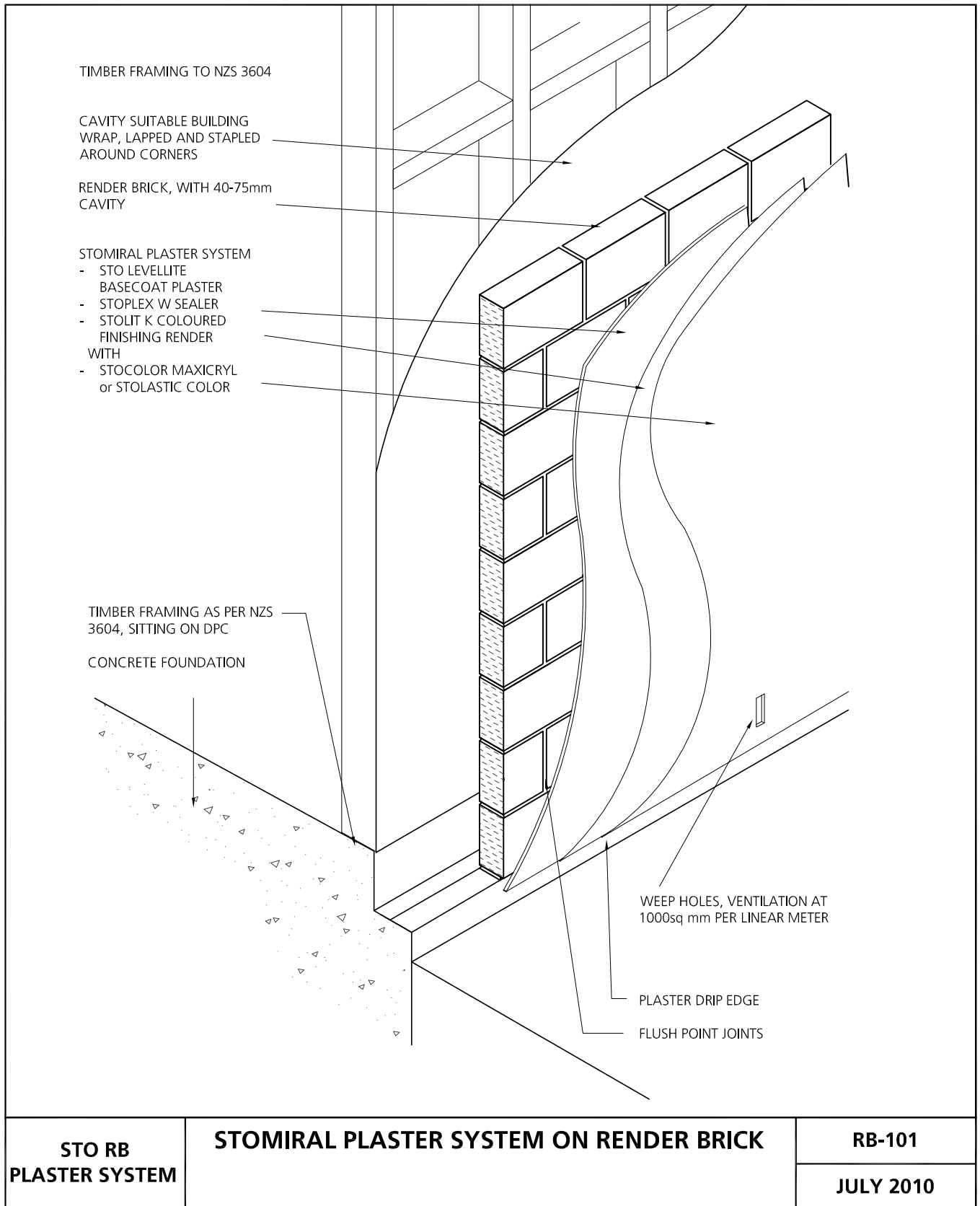
THE SEQUENCE OF WORK COVERS VARIOUS BUILDING COMPONENTS, EACH TRADE IS RESPONSIBLE TO ENSURE THEIR ELEMENTS ARE FULLY INSTALLED INCLUDING ALL WATERPROOFING/SEALANT/ FLASHINGS AS IS APPLICABLE.

<b>STO RB PLASTER SYSTEM</b>	<b>STO RENDER BRICK INDEX</b>	<b>RB-002</b>
		<b>JULY 2010</b>

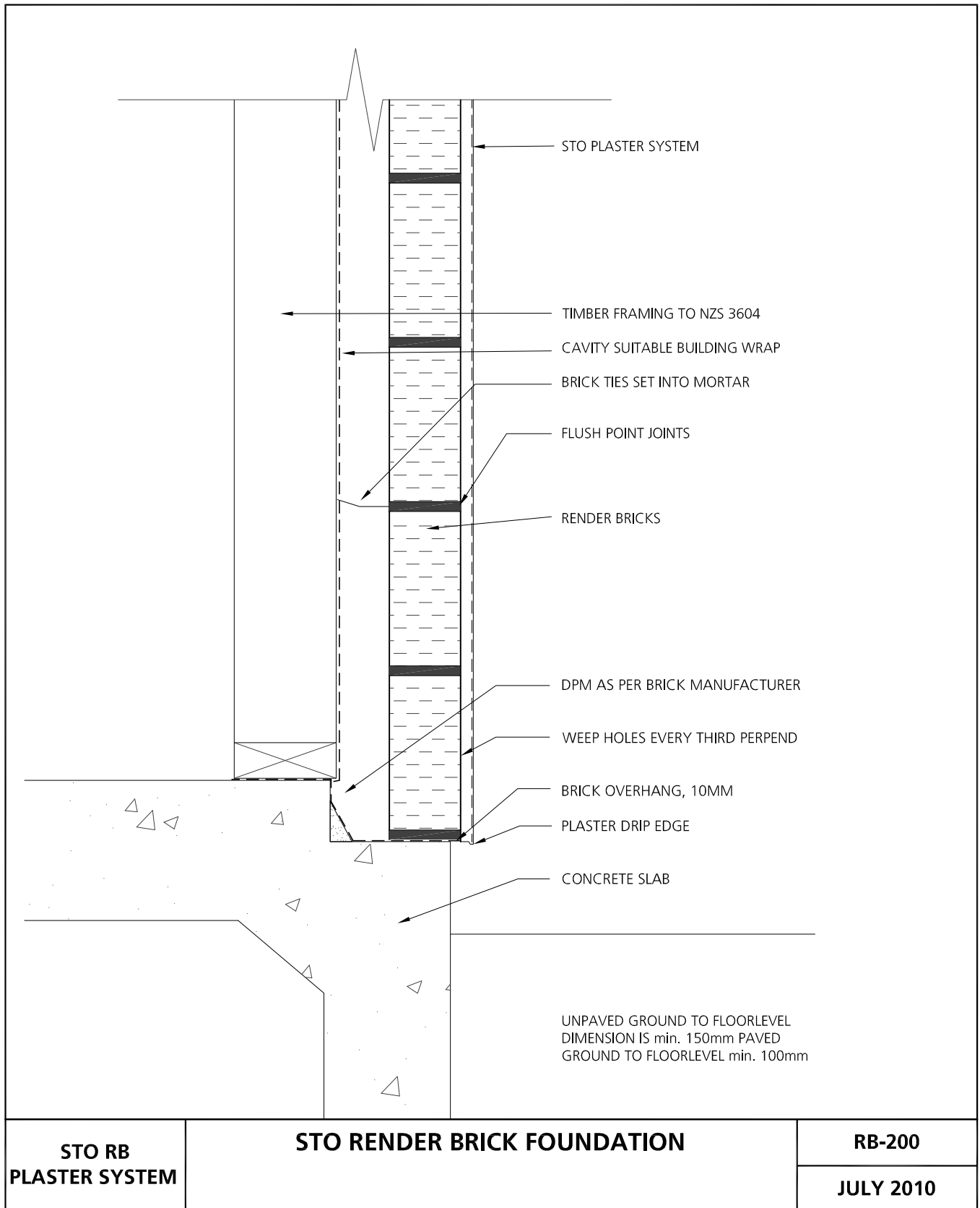
The information contained in this detail is based on our experience and testing and represents the latest information available at the date of issue. This detail is intended for use by the design professional and users of Sto products to assist in developing specific project details to be used in conjunction with a Sto Specification. We reserve the right to alter or update information at any time without prior notice & it is the responsibility of the specifier and/or the project manager to insure that they have the current Sto details and specifications.



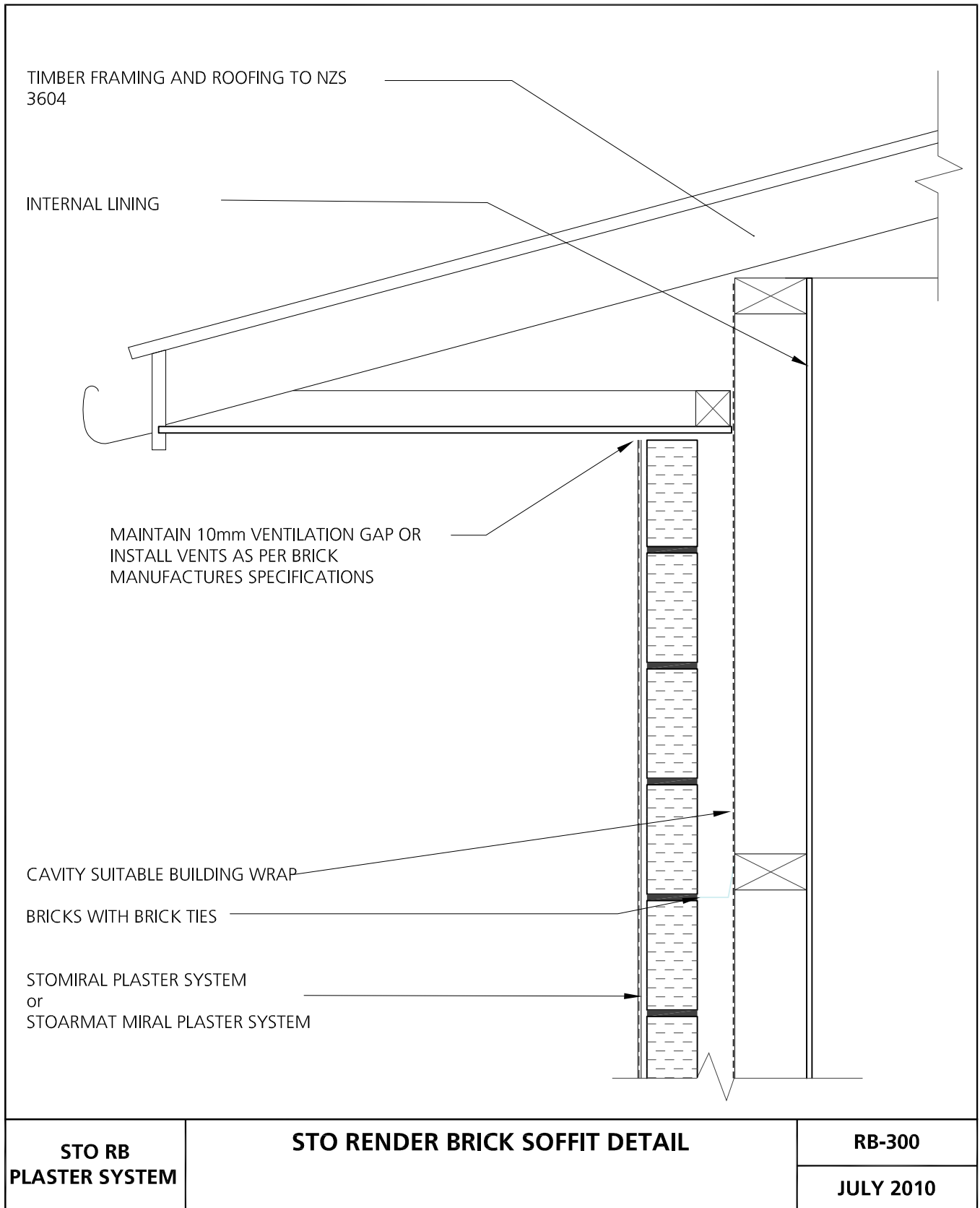
The information contained in this detail is based on our experience and testing and represents the latest information available at the date of issue. This detail is intended for use by the design professional and users of Sto products to assist in developing specific project details to be used in conjunction with a Sto Specification. We reserve the right to alter or update information at any time without prior notice & it is the responsibility of the specifier and/or the project manager to insure that they have the current Sto details and specifications.



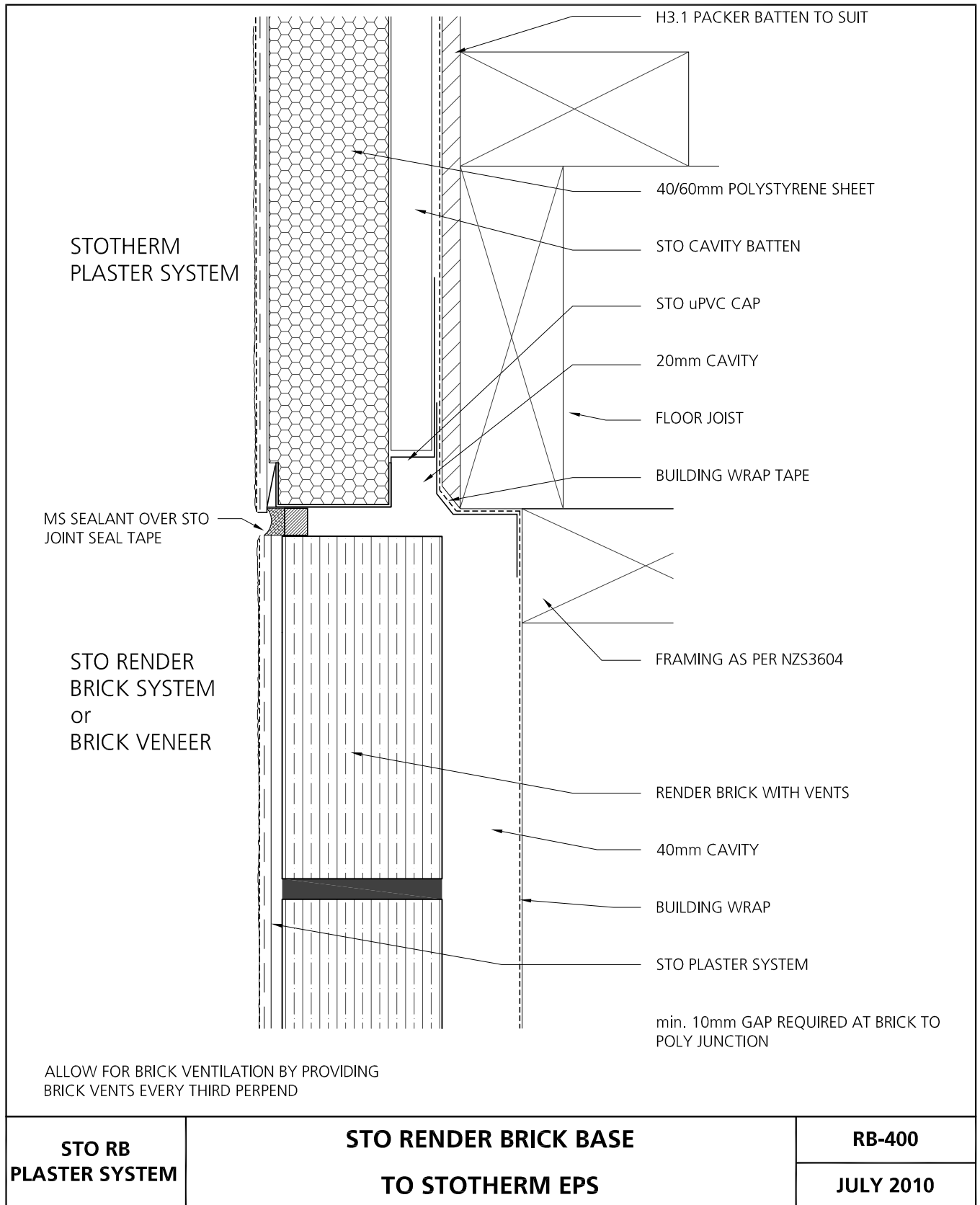
The information contained in this detail is based on our experience and testing and represents the latest information available at the date of issue. This detail is intended for use by the design professional and users of Sto products to assist in developing specific project details to be used in conjunction with a Sto Specification. We reserve the right to alter or update information at any time without prior notice & it is the responsibility of the specifier and/or the project manager to insure that they have the current Sto details and specifications.



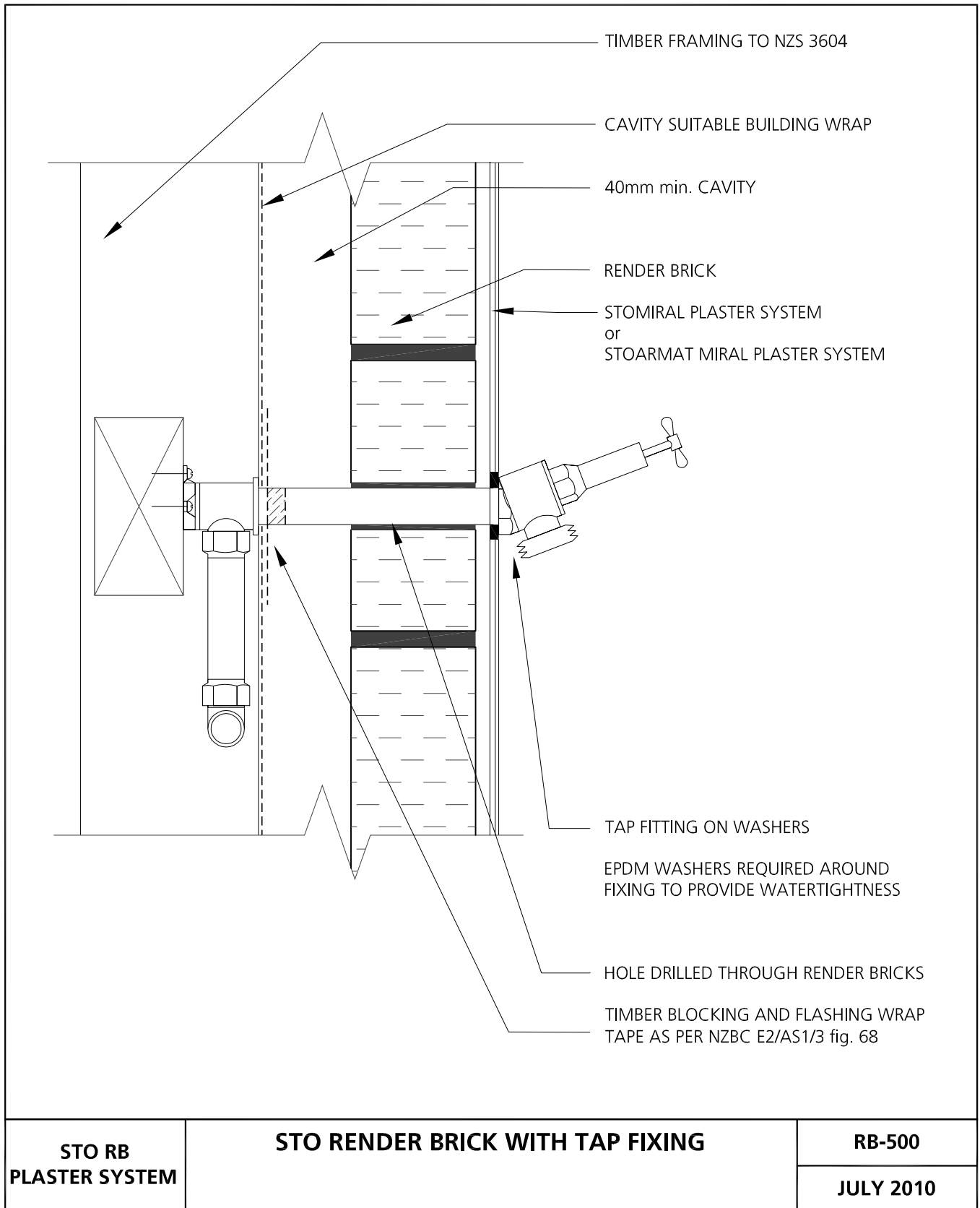
The information contained in this detail is based on our experience and testing and represents the latest information available at the date of issue. This detail is intended for use by the design professional and users of Sto products to assist in developing specific project details to be used in conjunction with a Sto Specification. We reserve the right to alter or update information at any time without prior notice & it is the responsibility of the specifier and/or the project manager to insure that they have the current Sto details and specifications.



The information contained in this detail is based on our experience and testing and represents the latest information available at the date of issue. This detail is intended for use by the design professional and users of Sto products to assist in developing specific project details to be used in conjunction with a Sto Specification. We reserve the right to alter or update information at any time without prior notice & it is the responsibility of the specifier and/or the project manager to insure that they have the current Sto details and specifications.

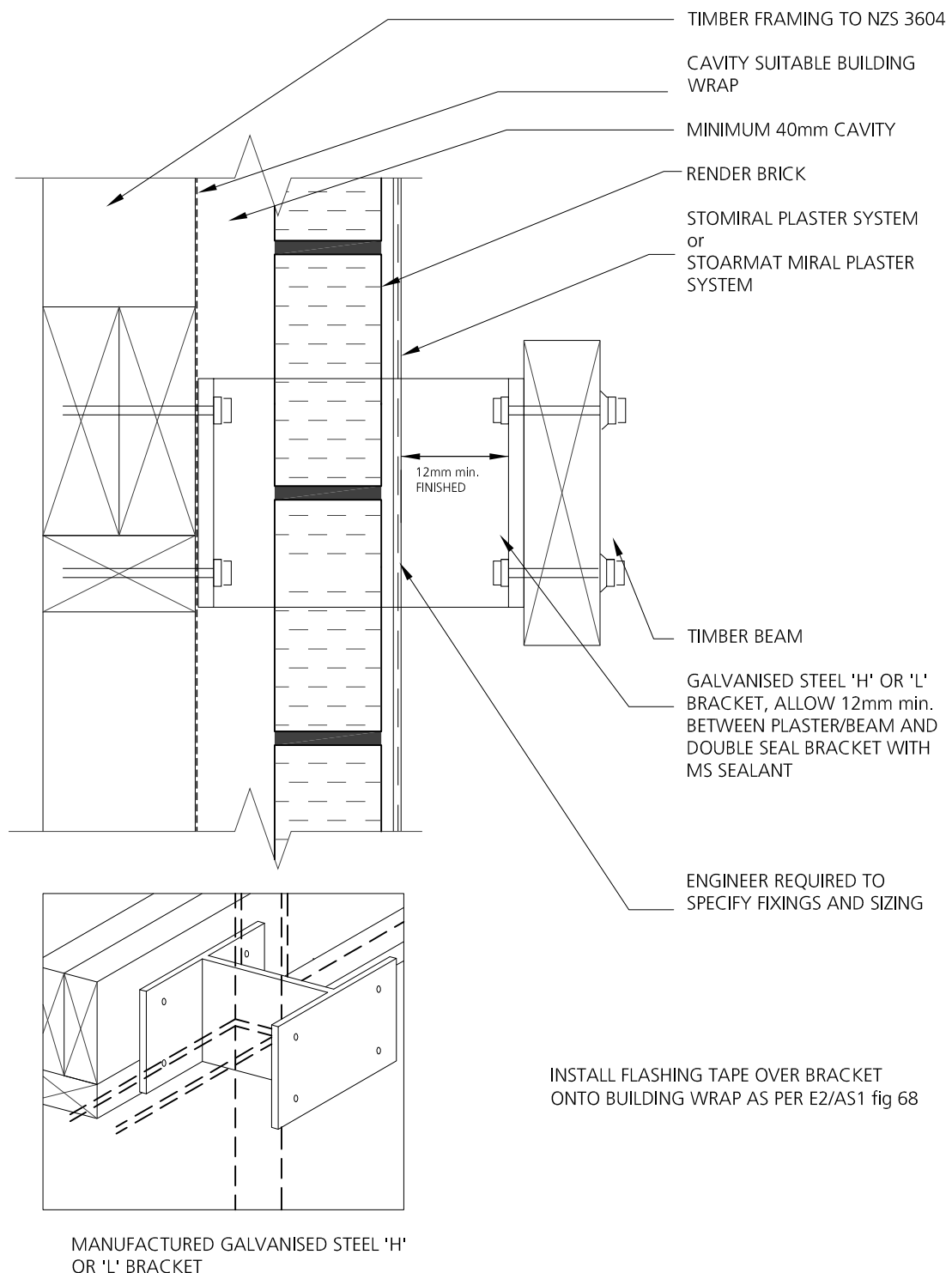


The information contained in this detail is based on our experience and testing and represents the latest information available at the date of issue. This detail is intended for use by the design professional and users of Sto products to assist in developing specific project details to be used in conjunction with a Sto Specification. We reserve the right to alter or update information at any time without prior notice & it is the responsibility of the specifier and/or the project manager to insure that they have the current Sto details and specifications.



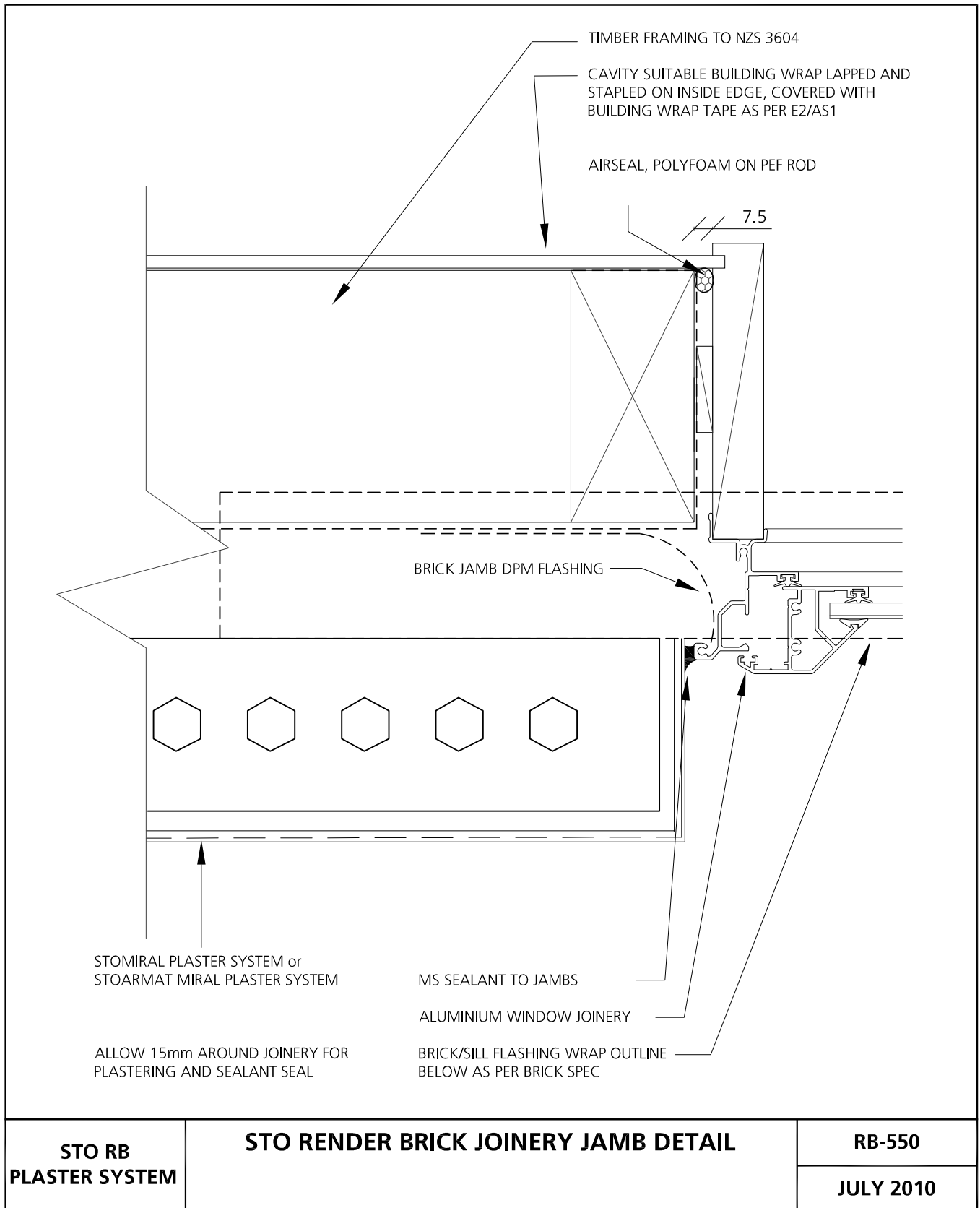
The information contained in this detail is based on our experience and testing and represents the latest information available at the date of issue. This detail is intended for use by the design professional and users of Sto products to assist in developing specific project details to be used in conjunction with a Sto Specification. We reserve the right to alter or update information at any time without prior notice & it is the responsibility of the specifier and/or the project manager to insure that they have the current Sto details and specifications.



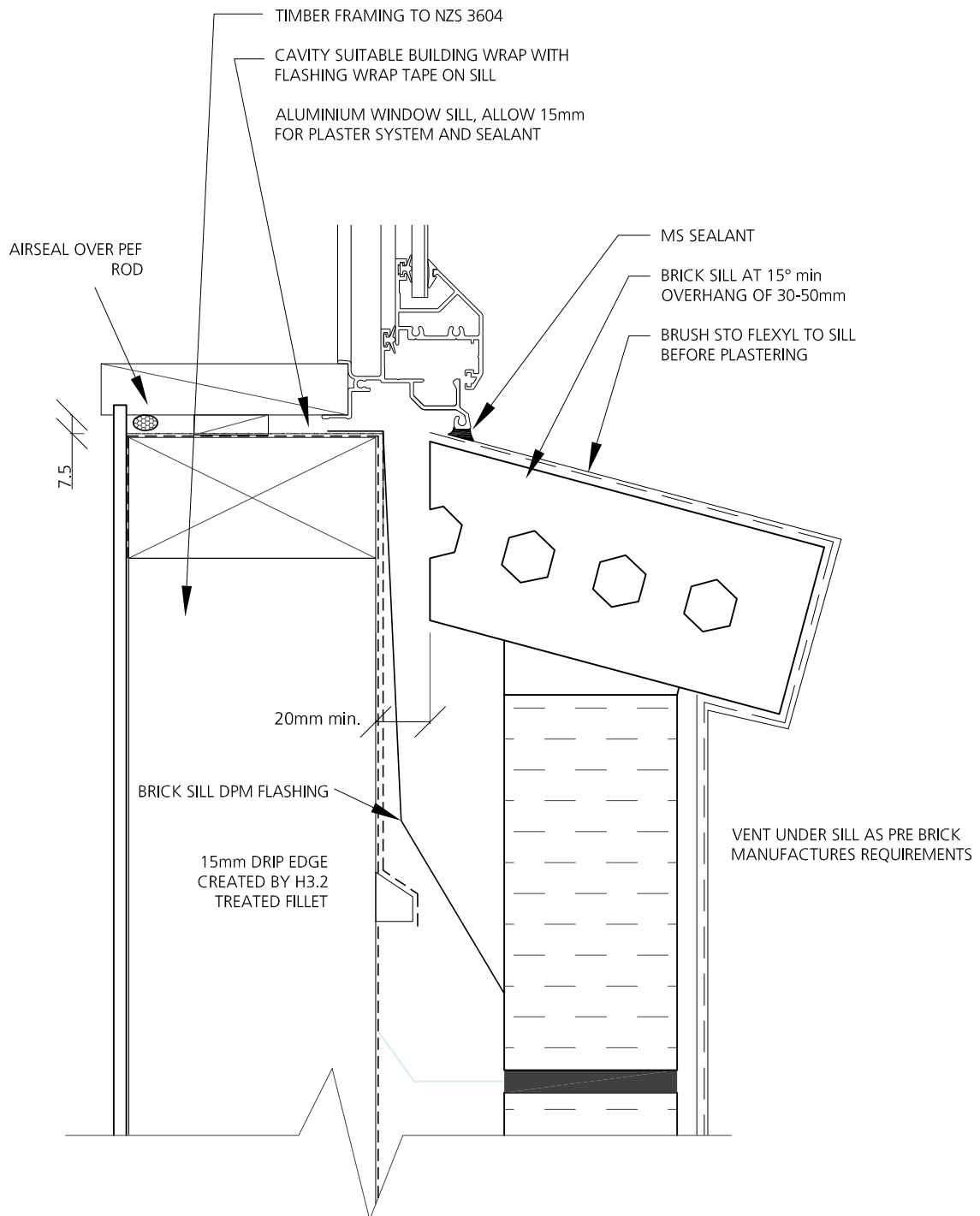


<b>STO RB PLASTER SYSTEM</b>	<b>STO RENDER BRICK WITH GALVANISED FIXING BRACKET</b>	<b>RB-501</b>
		<b>JULY 2010</b>

The information contained in this detail is based on our experience and testing and represents the latest information available at the date of issue. This detail is intended for use by the design professional and users of Sto products to assist in developing specific project details to be used in conjunction with a Sto Specification. We reserve the right to alter or update information at any time without prior notice & it is the responsibility of the specifier and/or the project manager to insure that they have the current Sto details and specifications.



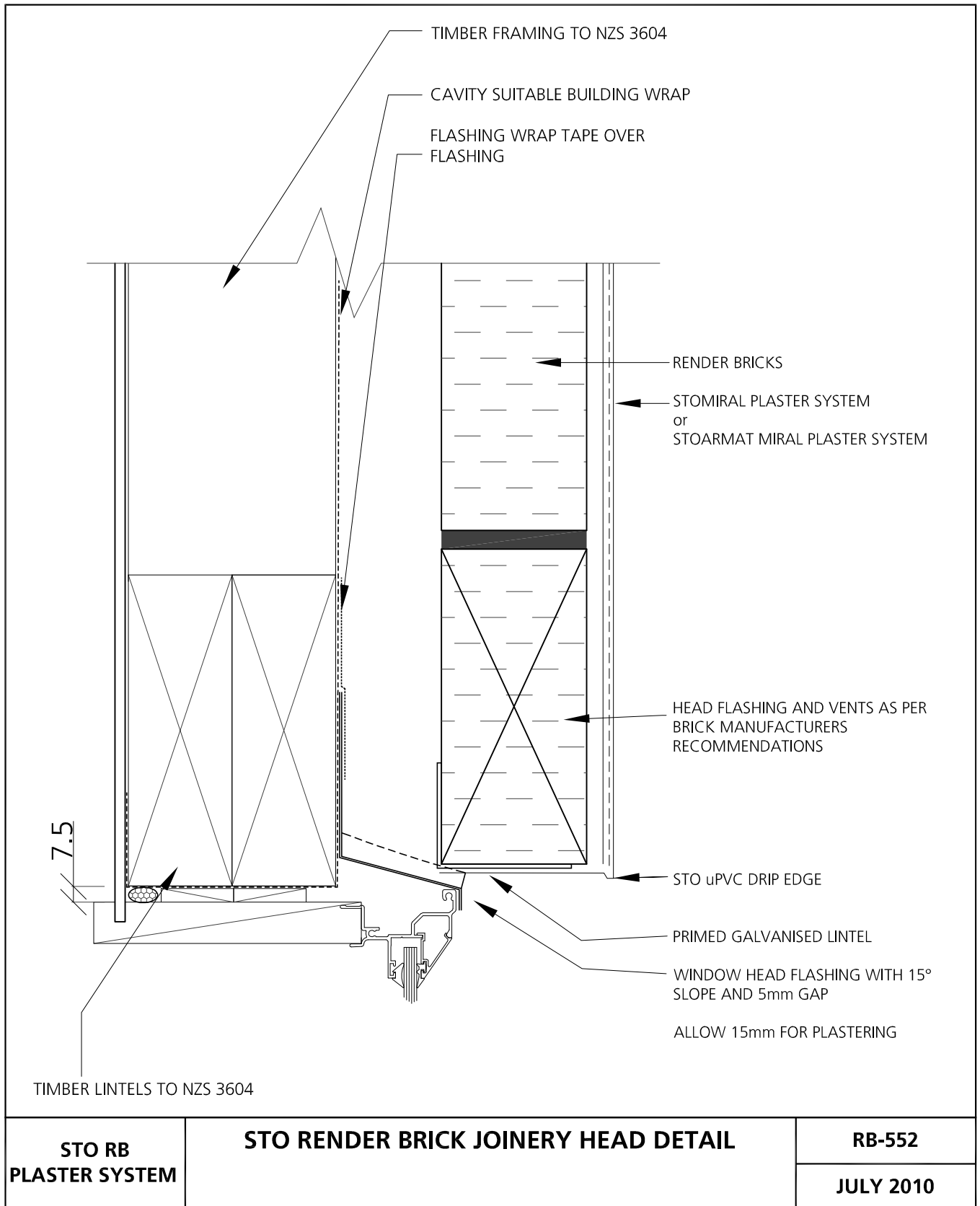
The information contained in this detail is based on our experience and testing and represents the latest information available at the date of issue. This detail is intended for use by the design professional and users of Sto products to assist in developing specific project details to be used in conjunction with a Sto Specification. We reserve the right to alter or update information at any time without prior notice & it is the responsibility of the specifier and/or the project manager to insure that they have the current Sto details and specifications.



WARNING: SOME BRANDS OF ALUMINIUM JOINERY HAVE DRAINAGE VENTS IN THE BOTTOM EDGE OF THE SILL FLANGE. ENSURE DRAINAGE VENTS REMAIN CLEAR.

<b>STO RB PLASTER SYSTEM</b>	<b>STO RENDER BRICK JOINERY SILL DETAIL</b>	<b>RB-551</b>
		<b>JULY 2010</b>

The information contained in this detail is based on our experience and testing and represents the latest information available at the date of issue. This detail is intended for use by the design professional and users of Sto products to assist in developing specific project details to be used in conjunction with a Sto Specification. We reserve the right to alter or update information at any time without prior notice & it is the responsibility of the specifier and/or the project manager to insure that they have the current Sto details and specifications.



The information contained in this detail is based on our experience and testing and represents the latest information available at the date of issue. This detail is intended for use by the design professional and users of Sto products to assist in developing specific project details to be used in conjunction with a Sto Specification. We reserve the right to alter or update information at any time without prior notice & it is the responsibility of the specifier and/or the project manager to insure that they have the current Sto details and specifications.