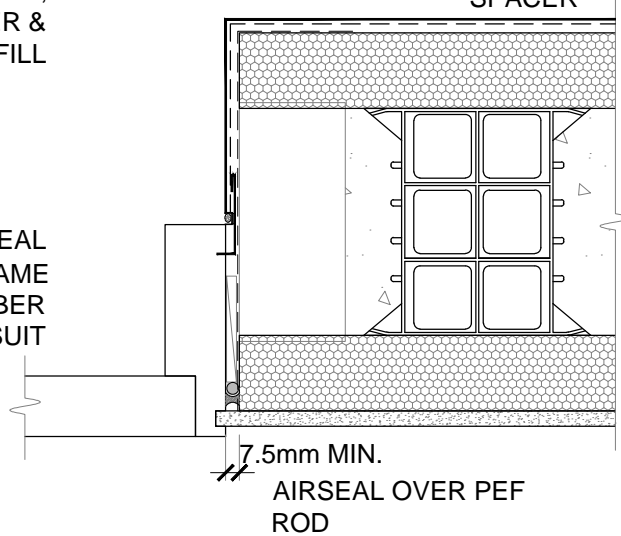


70x45mm H3.1 TIMBER
BLOCKS @ 600CTRS LENGTH
OF BLOCK TO SUIT WIDTH
OF CONCRETE INFILL - FIX
WITH 100mm GALV.NAILS,
SKEW NAILED TO TIMBER &
CAST IN CONCRETE INFILL

CONCRETE INFILL &
REINFORCEMENT AS
PER MANUFACTURER
THERMOPLASTIC PP
SPACER

REBATED REVEAL
DOOR FRAME
H3.1 TIMBER
PACKER TO SUIT



SCALE 1:5

<p>STO EPS-B SYSTEM</p>	<p>STO EPS/ICF BLOCK DOOR JAMB DETAIL</p>	<p>EB 403</p>
		<p>2014</p>

The information contained in this detail is based on our experience and testing and represents the latest information available at the date of issue. This detail is intended for use by the design professional and users of Sto products to assist in developing specific project details to be used in conjunction with a Sto Specification. We reserve the right to alter or update information at any time without prior notice & it is the responsibility of the specifier and/or the project manager to insure that they have the current Sto details and specifications.