

Sto DRAWING REGISTER

Drawing Description	Drawing No.
Drawing Register	EB 001 - 002
Introduction Series 000	
Sto EPS/ICF Block Plaster System - Introduction	EB 003
Block Layout Series 100	
Sto EPS/ICF Block - Construction	EB 100
Sto EPS/ICF Block - Stotherm Plaster System	EB 101
Foundation Series 200	
Sto EPS/ICF Block - Standard Edge	EB 200
Sto EPS/ICF Block - Strip Footing	EB 201
Sto EPS/ICF Block - Thickened edge	EB 202
Sto EPS/ICF Block - Basement	EB 203
Sto EPS/ICF Block - Tanking to Plaster Transition	EB 204
Walls Series 300	
Sto EPS/ICF Block - External Corner	EB 300
Sto EPS/ICF Block - Internal Corner	EB 301
Sto EPS/ICF Block - Wall Fixing to Deck	EB 302
Sto EPS/ICF Block - Timber Floor/Wall Detail	EB 303
Sto EPS/ICF Block - Timber Floor/Wall Detail (parallel to wall)	EB 304
Sto EPS/ICF Block - Concrete Floor/Wall Detail	EB 305
Wall Penetrations & Fittings Series 350	
Sto EPS/ICF Block Pipe Penetration (up to 150mm Ø) Detail	EB 350
Sto EPS/ICF Block Meterbox	EB 351
Sto EPS/ICF Block Light Fitting/Fixing Detail	EB 352
Sto EPS/ICF Block Tap Fitting/Fixing Detail	EB 353
Sto EPS/ICF Block Handrail Bracket/Fixing Detail	EB 354
Sto EPS/ICF Block Downpipe Saddle Fixing & Wiring Detail	EB 355
Sto EPS/ICF Block Fan Vent Detail	EB 356
Joinery Series 400	
Sto EPS/ICF Block Alu. Joinery Head and Sill Detail	EB 400
Sto EPS/ICF Block Alu. Jamb Detail	EB 401
Sto EPS/ICF Block Timber Door Head Detail	EB 402
Sto EPS/ICF Block Timber Door Jamb Detail	EB 403
Sto EPS/ICF Block Timber Window Head and Sill Detail	EB 404
Sto EPS/ICF Block Timber Window Jamb Detail	EB 405
Sto EPS/ICF Block for Solid Masonry Rebates	EB 406
Sto EPS/ICF Block for Arched Openings	EB 407
Parapets, Balustrades, Decks Series 500	
Sto EPS/ICF Block Parapet - Metal Flashing Detail	EB 500
Sto EPS/ICF Block Plastered Parapet/Balustrade Detail	EB 501
Sto EPS/ICF Block Balustrade/Parapet to Wall	EB 502

THESE DETAILS ARE ISSUED AS A GUIDE INCORPORATING CBANDARD BUILDING PRACTICES.
 ALWAYS REFER TO MANUFACTURERS CURRENT DETAILS AND SPECIFICATIONS.
 THE SEQUENCE OF WORK COVERS VARIOUS BUILDING COMPONENTS, EACH TRADE IS
 RESPONSIBLE TO ENSURE THEIR ELEMENTS ARE FULLY INCBALLED INCLUDING ALL
 WATERPROOFING/SEALANT/ FLASHINGS AS IS APPLICABLE.

PAGE 1 OF 2

STO EPS-B SYSTEM	STO EPS/ICF BLOCK DRAWING REGISTER	EB 001
		2014

The information contained in this detail is based on our experience and testing and represents the latest information available at the date of issue. This detail is intended for use by the design professional and users of Sto products to assist in developing specific project details to be used in conjunction with a Sto Specification. We reserve the right to alter or update information at any time without prior notice & it is the responsibility of the specifier and/or the project manager to insure that they have the current Sto details and specifications.

Sto DRAWING REGISTER

Drawing Description

Drawing No.

Soffit Series 600 series *not* issued

Roof Series 700

Sto EPS/ICF Block Typical Eaves Detail
Sto EPS/ICF Block Reverse Slope Eaves Detail
Sto EPS/ICF Block Gable End / Roof Junction

EB700
EB701
EB702

Dissimilar Material series *not* issued

Weatherboard Series 800 series *not* issued

Brick Series 810 series *not* issued

Fibre Cement Sheet Series 820 series *not* issued

Manufactured Stone - Schist & Natural Stone Series 840 series *not* issued

Profile Metal Series 850 series *not* issued

DISSIMILAR JOINERY Series 870 series *not* issued

THESE DETAILS ARE ISSUED AS A GUIDE INCORPORATING CBANDARD BUILDING PRACTICES.
ALWAYS REFER TO MANUFACTURERS CURRENT DETAILS AND SPECIFICATIONS.
THE SEQUENCE OF WORK COVERS VARIOUS BUILDING COMPONENTS, EACH TRADE IS
RESPONSIBLE TO ENSURE THEIR ELEMENTS ARE FULLY INCBALLED INCLUDING ALL
WATERPROOFING/SEALANT/ FLASHINGS AS IS APPLICABLE.

PAGE 3 OF 3

STO EPS-B SYSTEM	STO EPS/ICF BLOCK DRAWING REGISTER	EB 002
		2014

The information contained in this detail is based on our experience and testing and represents the latest information available at the date of issue. This detail is intended for use by the design professional and users of Sto products to assist in developing specific project details to be used in conjunction with a Sto Specification. We reserve the right to alter or update information at any time without prior notice & it is the responsibility of the specifier and/or the project manager to insure that they have the current Sto details and specifications.

STO EPS/ICF BLOCK

SS707 STOTHERM CLASSIC PLASTER SYSTEM BRANZ APPRAISAL CERTIFICATE NO. 515
INCORPORATING:

1. STO FLEXYL WATERPROOFING 18kg PAIL PLUS CEMENT EVALUATED BY BRANZ TO MEET AS/NZS4858 WATERPROOFING MEMBRANE REQUIREMENTS AS REQUIRED BY NZBC E2/AS1
2. MULTISCREED BASE PLASTER 25kg BAG. LITEWEIGHT MINERAL BASE PLASTER FOR LEVELING and STRAIGHTENING WALLS - CAN BE MACHINE APPLIED
3. STOARMAT CLASSIC PLASTER 23kg PAIL. EUROPEAN FIBRE REINFORCED NON-CEMENT BASED CRACK RESISTANT PLASTER USED WITH EUROPEAN MESH AS A REINFORMENT PLASTER
4. STOLIT K or MP COLOURED RENDER 25kg PAIL. EUROPEAN FIBRE REINFORCED NON-CEMENT BASED COLOURED FINISHING RENDER AVAILABLE IN 1.0/1.5/2.0 & 3.0mm SIZED TEXTURE AND MP or MP NATURAL SPONGE FINISH RENDER
5. STOCOLOR : MAXICRYL MATT FACADE PAINT 15lt PAIL
: LASTIC SATIN FACADE PAINT 15lt PAIL
: LOTUSAN MINERAL RESIN PAINT 15lt PAIL

EPS = EXPANDED POLYSTYRENE BLOCK

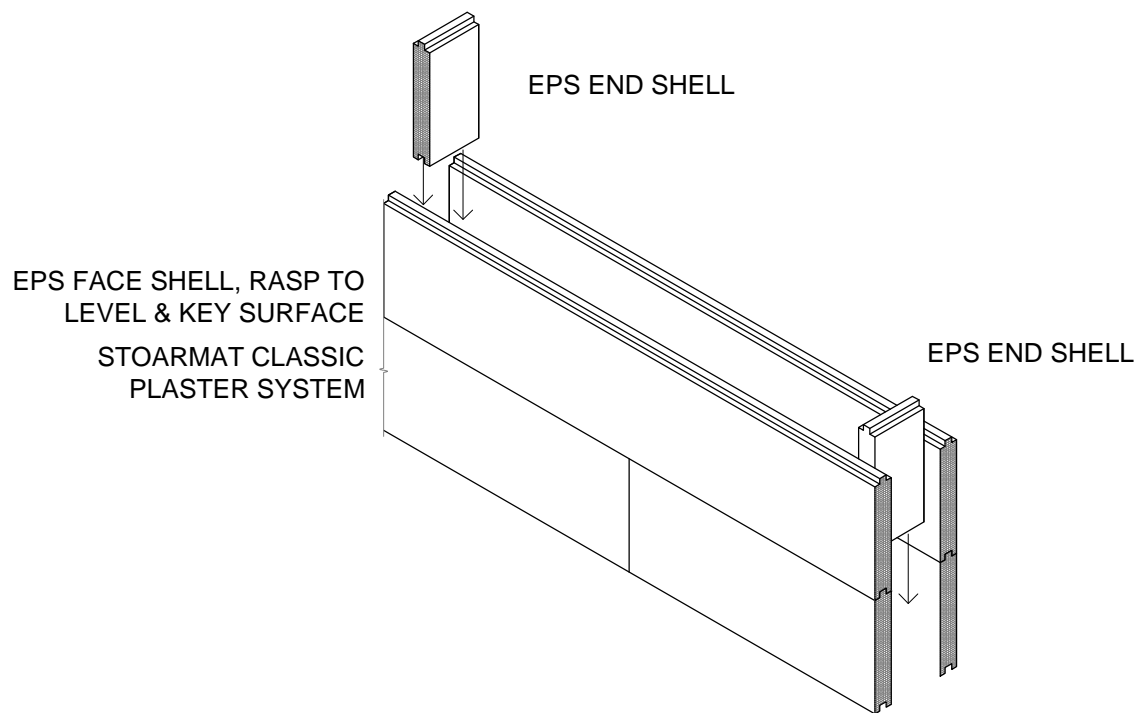
ICF = INSULATED CONCRETE FORMWORK

SS707 STOARMAT MIRAL PLASTER SYSTEM
BRANZ APPRAISAL CERTIFICATE NO. 515 - GENERAL NOTES

1. EPS BLOCKS ARE TO BE LAID AND REINFORCED IN ACCORDANCE WITH THE RELEVANT STANDARDS AND EPS BLOCK MANUFACTURERS SPECIFICATIONS & DRAWINGS
2. DUE CARE MUST BE TAKEN TO MAINTAIN CLEARANCES AND DISTANCES SO AS NOT TO COMPROMISE THE COMPONENTRY & WEATHERTIGHTNESS OF THE BUILDING SYSTEM
3. THE MAIN CONTRACTOR MUST ENSURE THAT ALL DISSIMILAR MATERIALS ARE ADEQUATELY WATERPROOFED BEFORE THE STO PLASTER SYSTEM IS APPLIED

<p>STO EPS-B BLOCK</p>	<p>STO EPS/ICF BLOCK</p> <p>INTRODUCTION</p>	<p>EB 003</p> <p>2014</p>
-----------------------------------	--	---

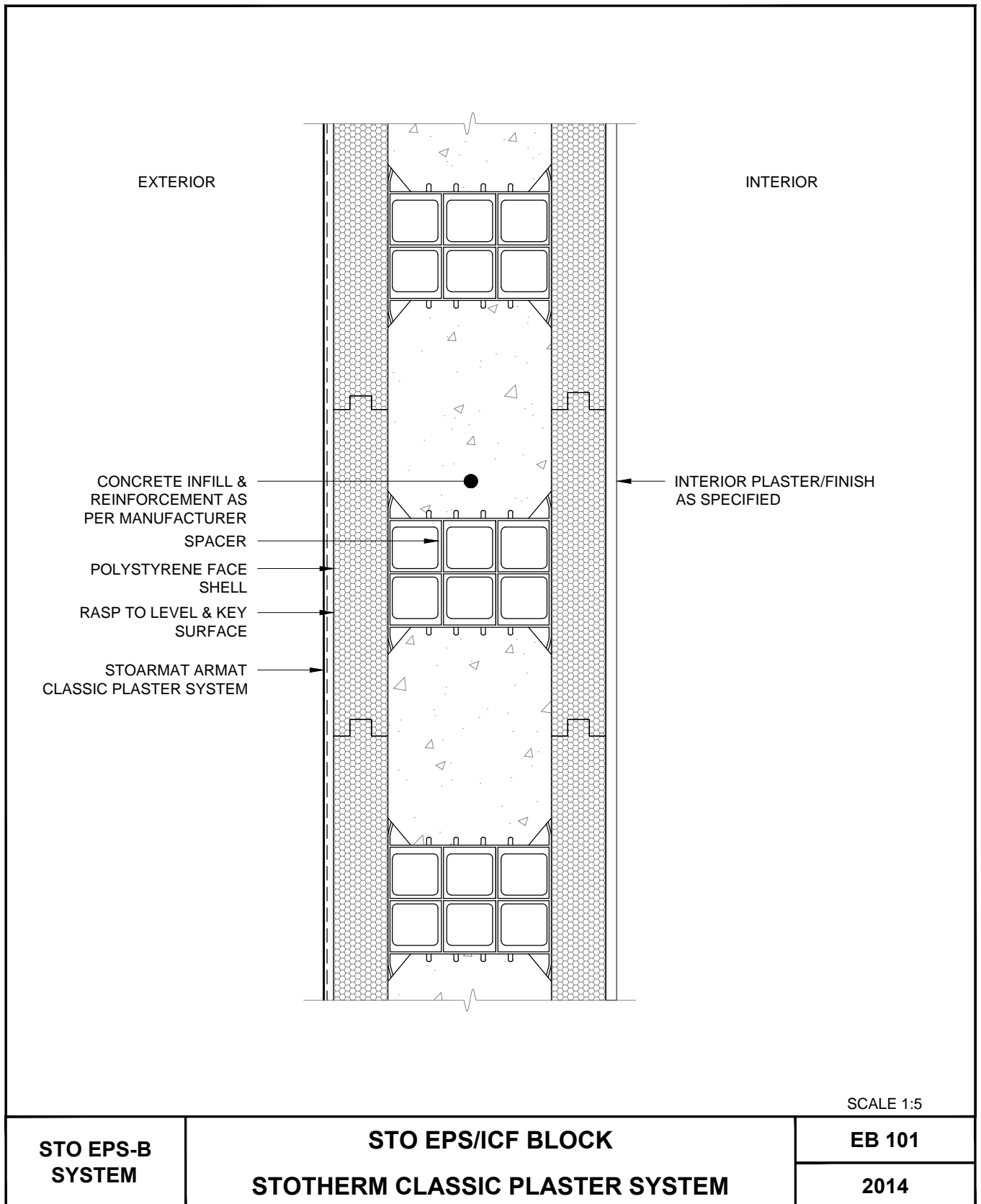
The information contained in this detail is based on our experience and testing and represents the latest information available at the date of issue. This detail is intended for use by the design professional and users of Sto products to assist in developing specific project details to be used in conjunction with a Sto Specification. We reserve the right to alter or update information at any time without prior notice & it is the responsibility of the specifier and/or the project manager to insure that they have the current Sto details and specifications.



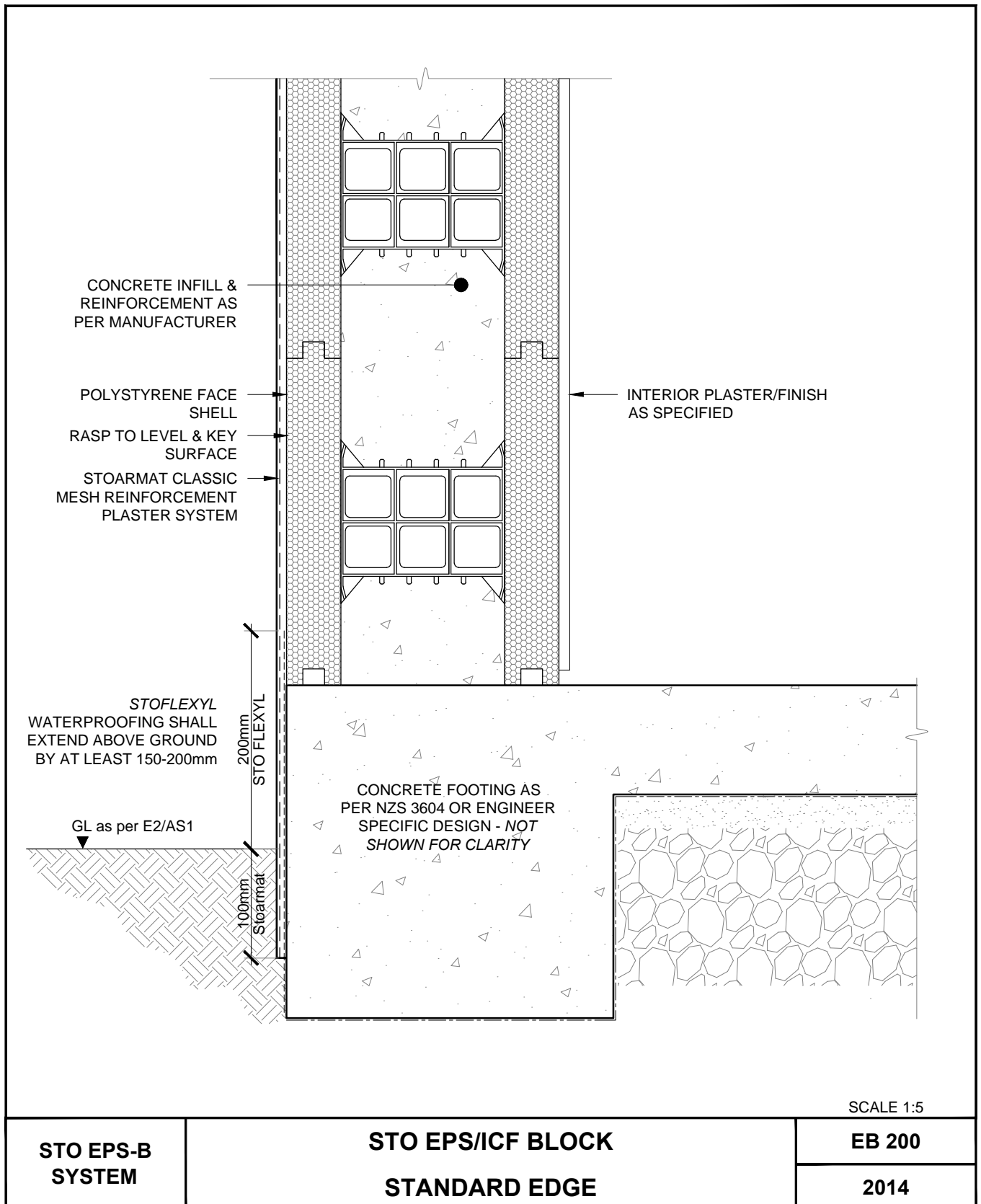
SCALE 1:20

STO EPS-B SYSTEM	STO EPS/ICF BLOCK TYPICAL CONSTRUCTION	EB-100 2014
-----------------------------	---	------------------------

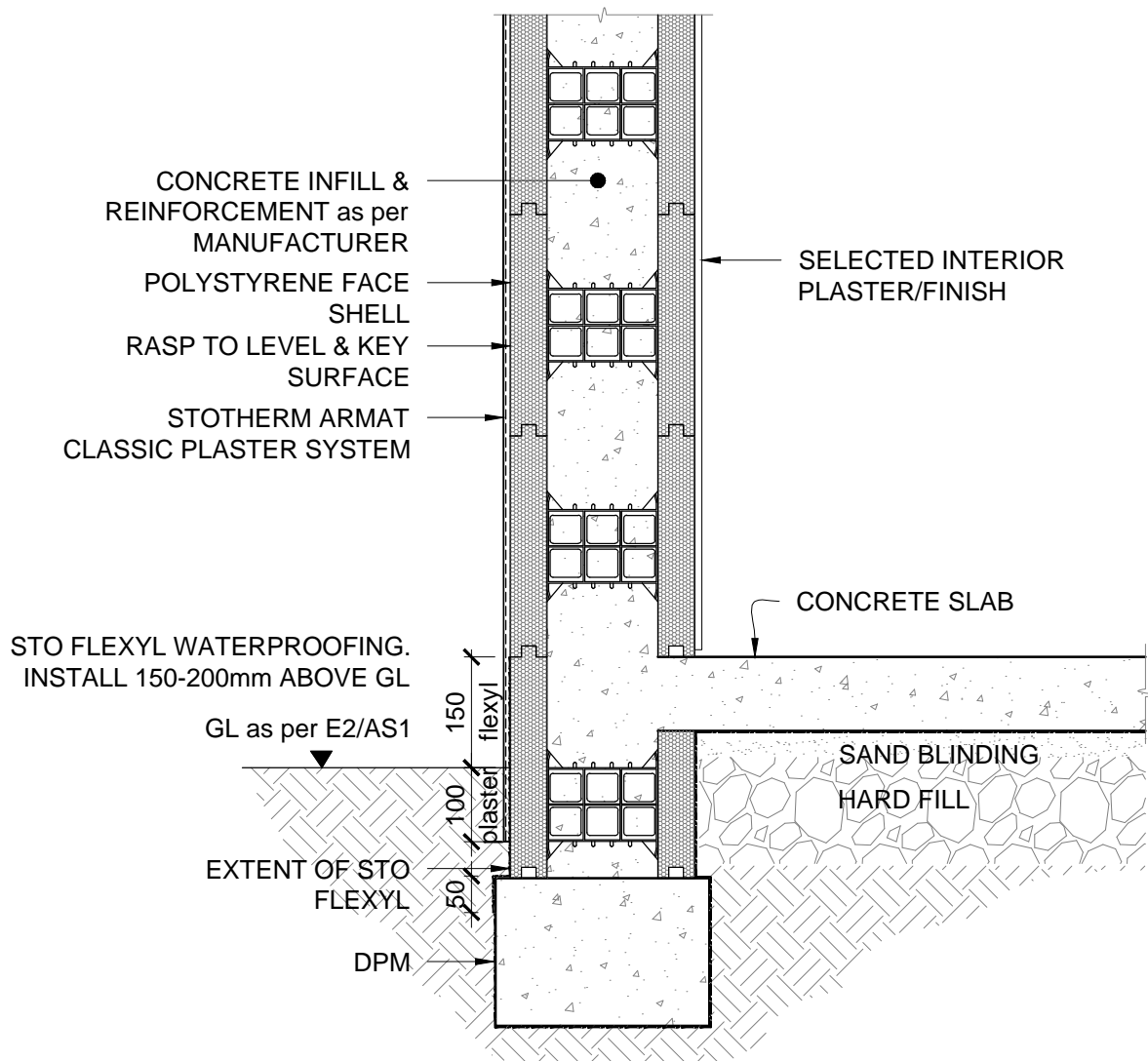
The information contained in this detail is based on our experience and testing and represents the latest information available at the date of issue. This detail is intended for use by the design professional and users of Sto products to assist in developing specific project details to be used in conjunction with a Sto Specification. We reserve the right to alter or update information at any time without prior notice & it is the responsibility of the specifier and/or the project manager to insure that they have the current Sto details and specifications.



The information contained in this detail is based on our experience and testing and represents the latest information available at the date of issue. This detail is intended for use by the design professional and users of Sto products to assist in developing specific project details to be used in conjunction with a Sto Specification. We reserve the right to alter or update information at any time without prior notice & it is the responsibility of the specifier and/or the project manager to insure that they have the current Sto details and specifications.



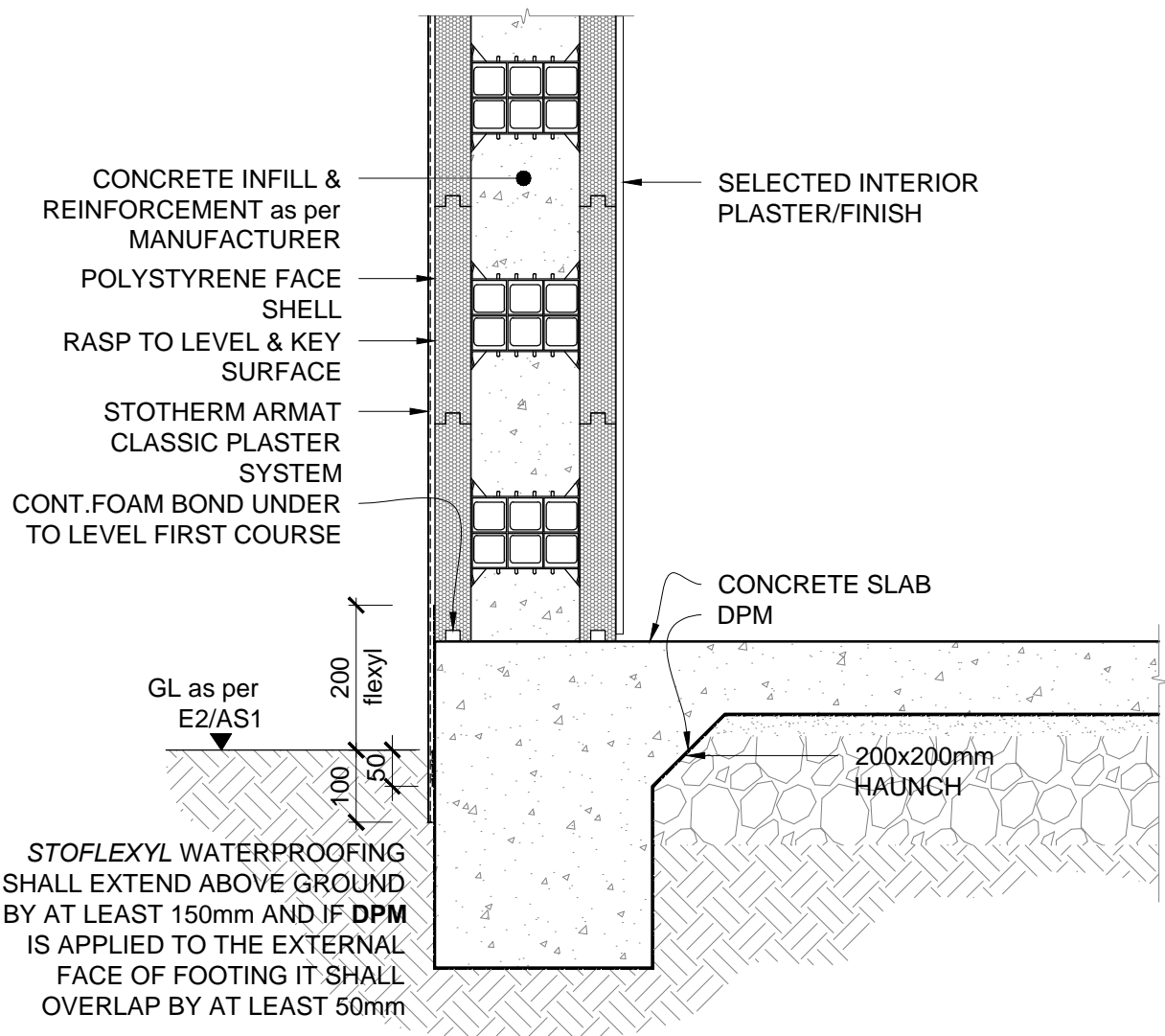
The information contained in this detail is based on our experience and testing and represents the latest information available at the date of issue. This detail is intended for use by the design professional and users of Sto products to assist in developing specific project details to be used in conjunction with a Sto Specification. We reserve the right to alter or update information at any time without prior notice & it is the responsibility of the specifier and/or the project manager to insure that they have the current Sto details and specifications.



SCALE 1:10

STO EPS-B SYSTEM	STO EPS/ICF BLOCK STRIP FOOTING	EB 201
		2014

The information contained in this detail is based on our experience and testing and represents the latest information available at the date of issue. This detail is intended for use by the design professional and users of Sto products to assist in developing specific project details to be used in conjunction with a Sto Specification. We reserve the right to alter or update information at any time without prior notice & it is the responsibility of the specifier and/or the project manager to insure that they have the current Sto details and specifications.



SCALE 1:10

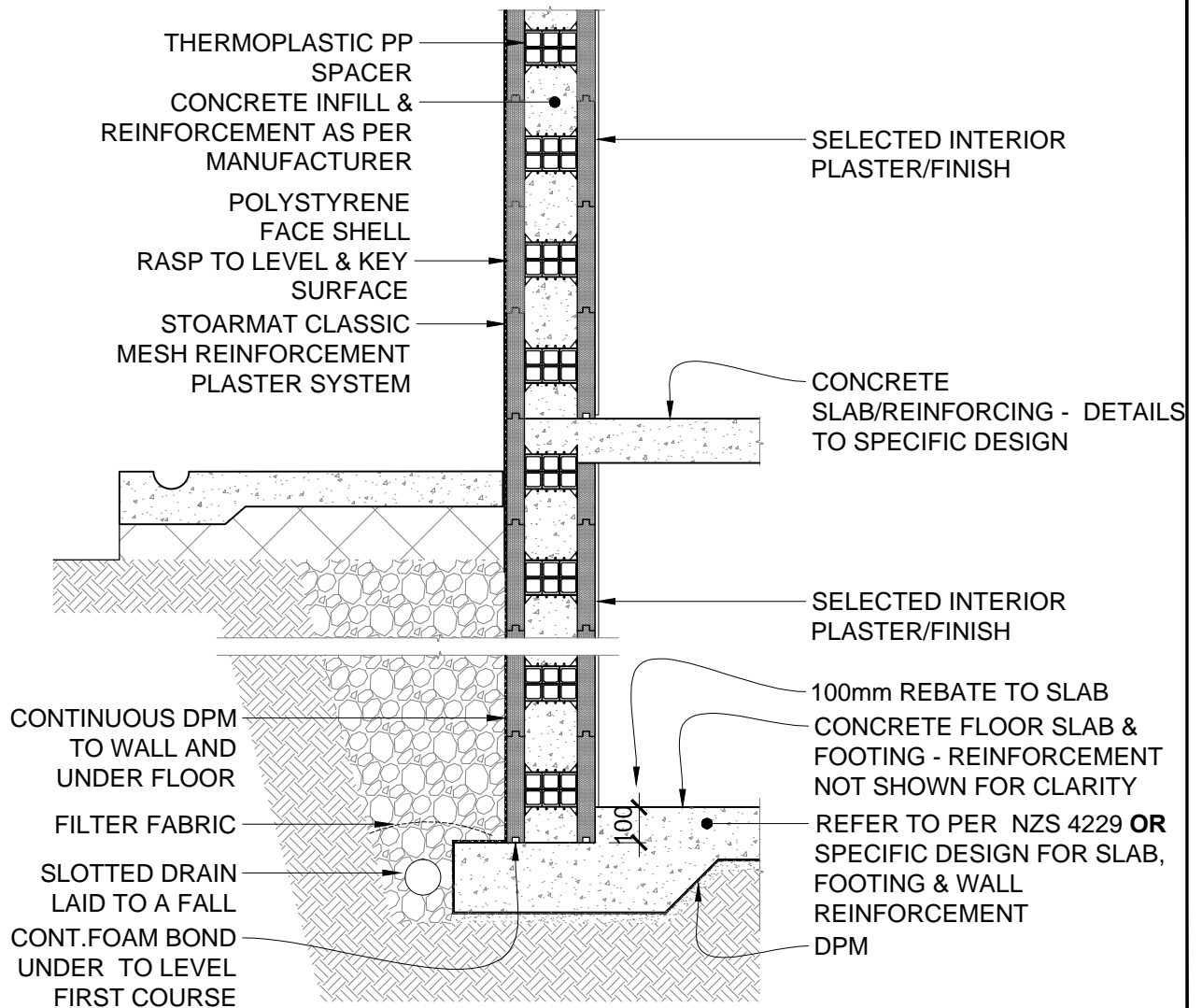
**STO EPS-B
SYSTEM**

**STO EPS/ICF BLOCK
THICKENED EDGE**

EB 202

2014

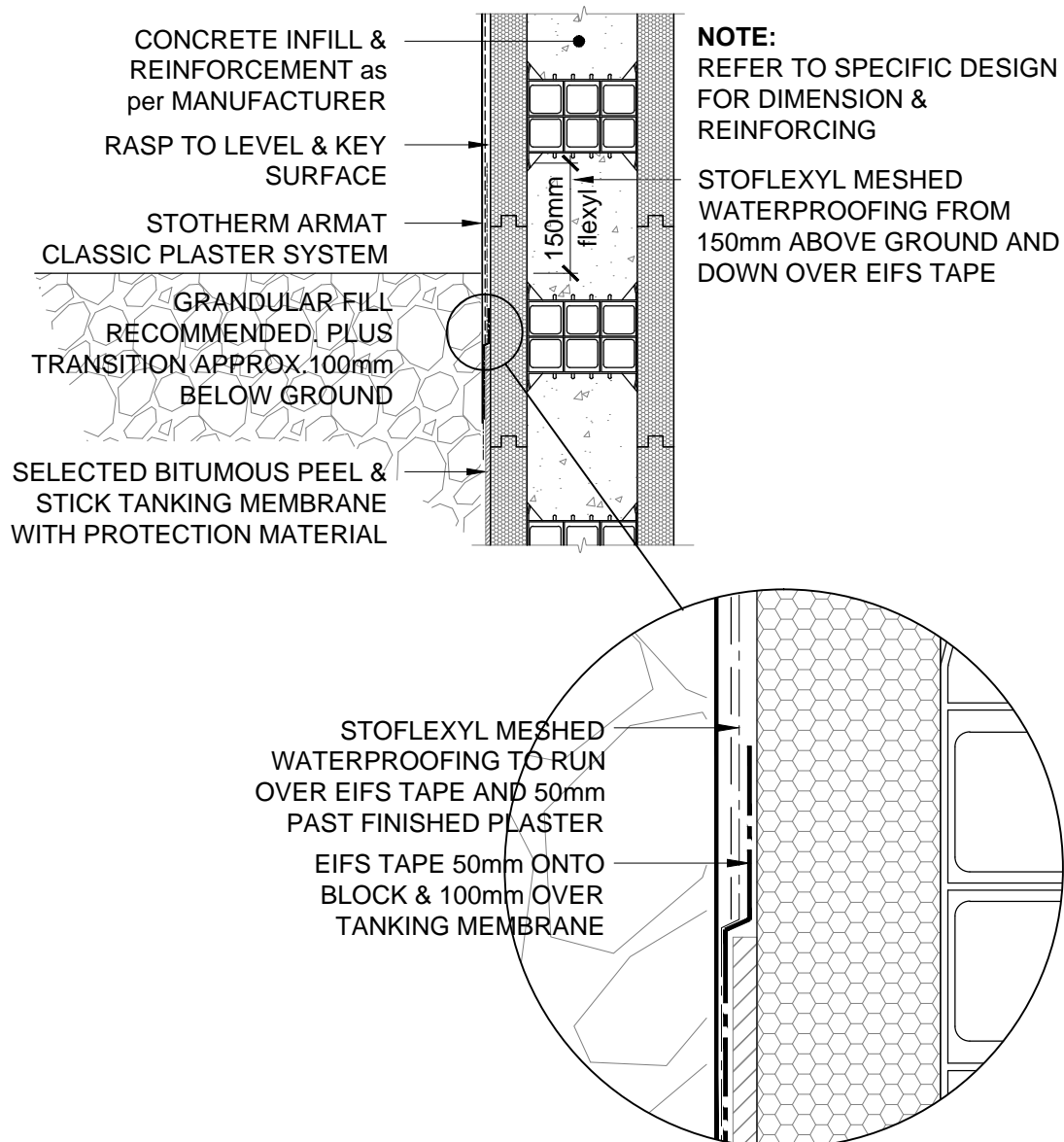
The information contained in this detail is based on our experience and testing and represents the latest information available at the date of issue. This detail is intended for use by the design professional and users of Sto products to assist in developing specific project details to be used in conjunction with a Sto Specification. We reserve the right to alter or update information at any time without prior notice & it is the responsibility of the specifier and/or the project manager to insure that they have the current Sto details and specifications.



SCALE 1:20

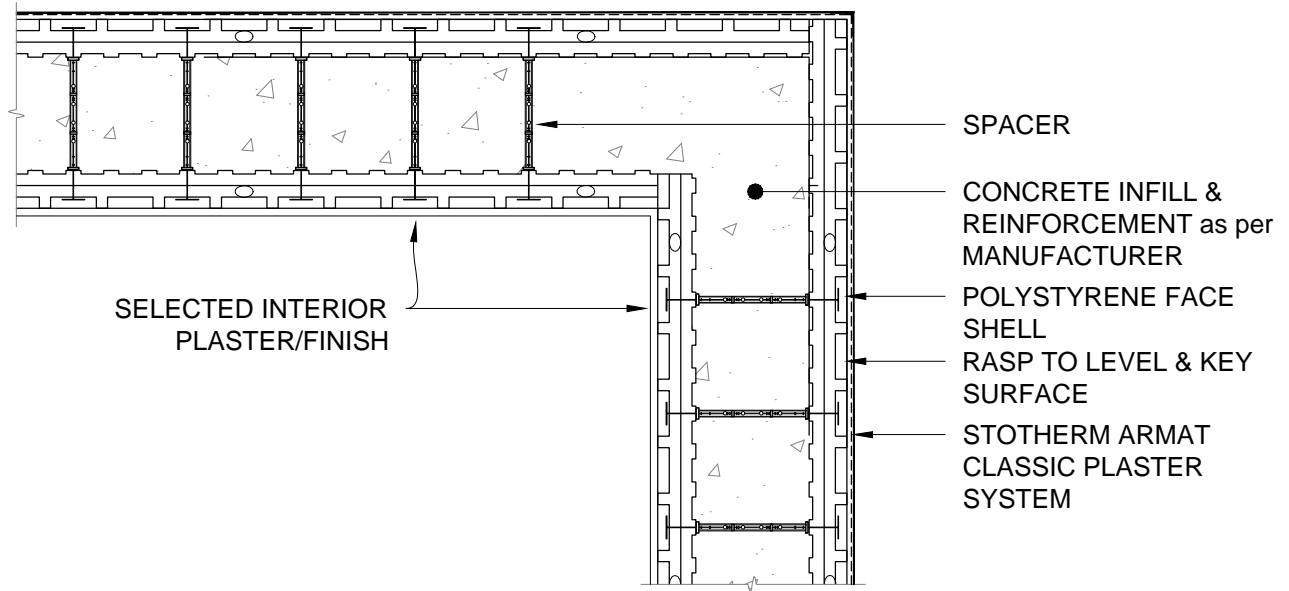
<p>STO EPS-B SYSTEM</p>	<p>STO EPS/ICF BLOCK BASEMENT</p>	<p>EB 203 2014</p>
------------------------------------	--	-------------------------------

The information contained in this detail is based on our experience and testing and represents the latest information available at the date of issue. This detail is intended for use by the design professional and users of Sto products to assist in developing specific project details to be used in conjunction with a Sto Specification. We reserve the right to alter or update information at any time without prior notice & it is the responsibility of the specifier and/or the project manager to insure that they have the current Sto details and specifications.



STO EPS-B BLOCK	STO EPS/ICF BLOCK TANKING TO PLASTER TRANSITION	EB 204 2014
----------------------------	--	----------------------------------

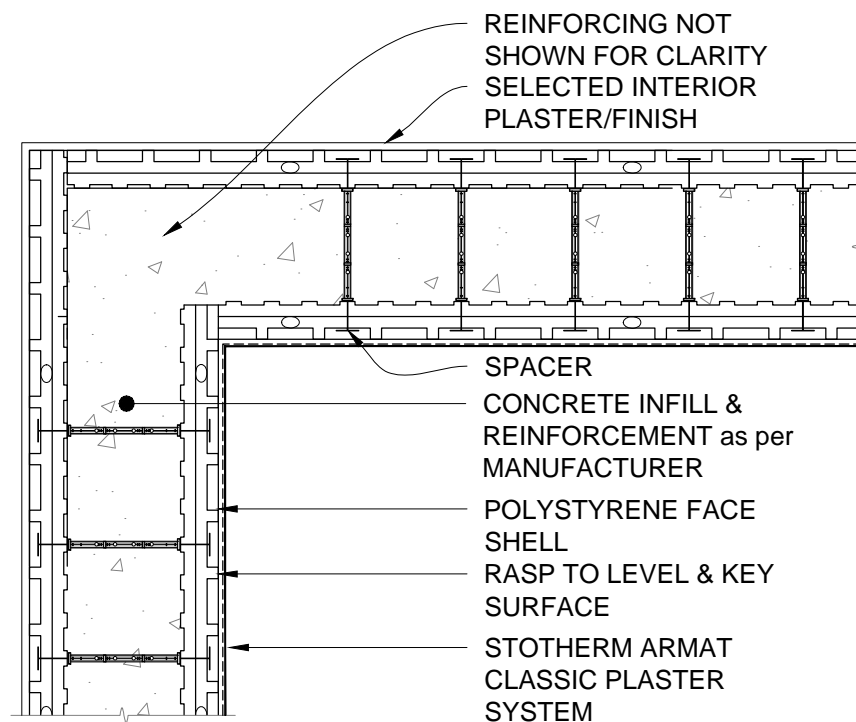
The information contained in this detail is based on our experience and testing and represents the latest information available at the date of issue. This detail is intended for use by the design professional and users of Sto products to assist in developing specific project details to be used in conjunction with a Sto Specification. We reserve the right to alter or update information at any time without prior notice & it is the responsibility of the specifier and/or the project manager to insure that they have the current Sto details and specifications.



SCALE 1:10

STO EPS-B SYSTEM	STO EPS/ICF BLOCK EXTERNAL CORNER	EB 300
		2014

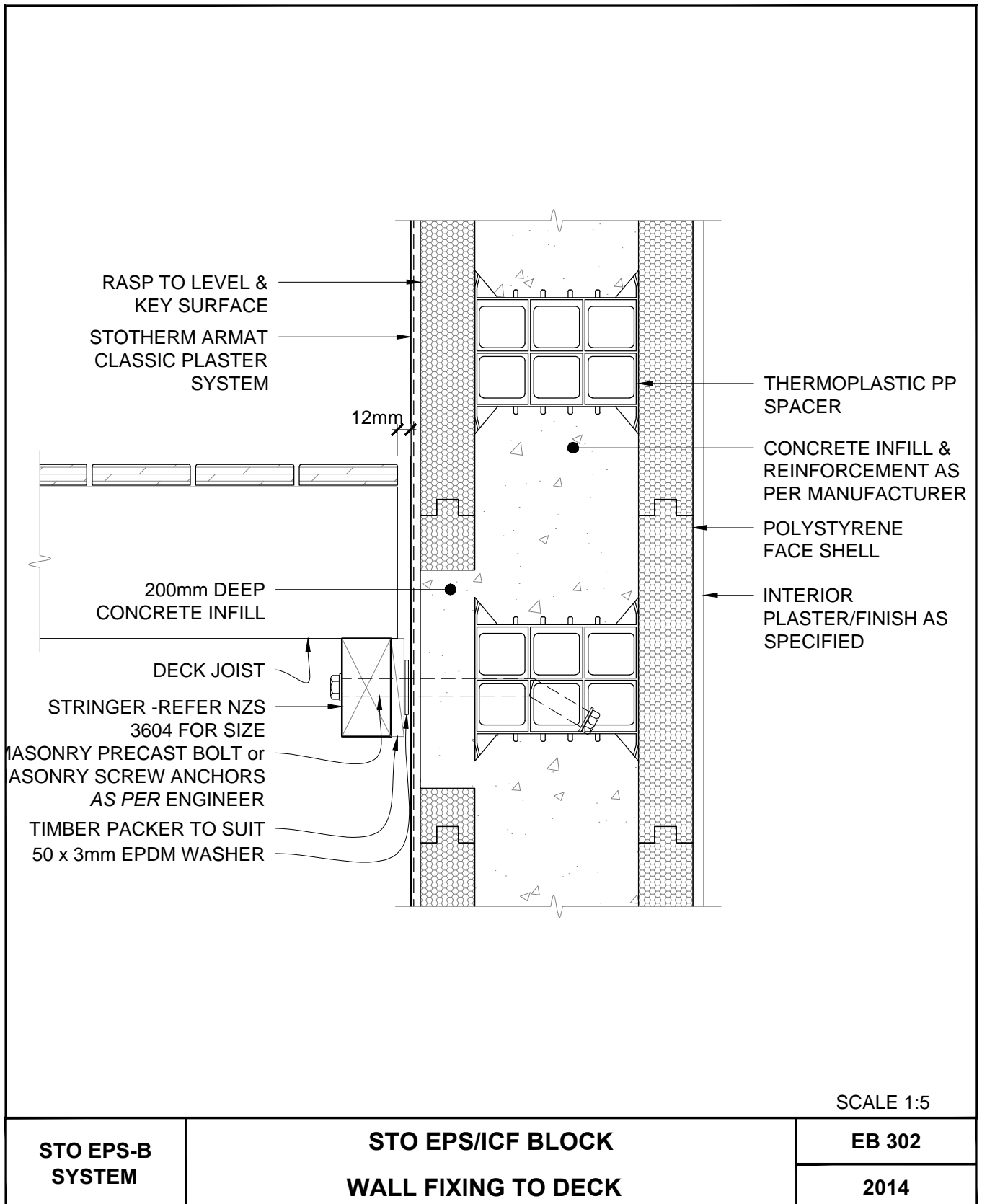
The information contained in this detail is based on our experience and testing and represents the latest information available at the date of issue. This detail is intended for use by the design professional and users of Sto products to assist in developing specific project details to be used in conjunction with a Sto Specification. We reserve the right to alter or update information at any time without prior notice & it is the responsibility of the specifier and/or the project manager to insure that they have the current Sto details and specifications.



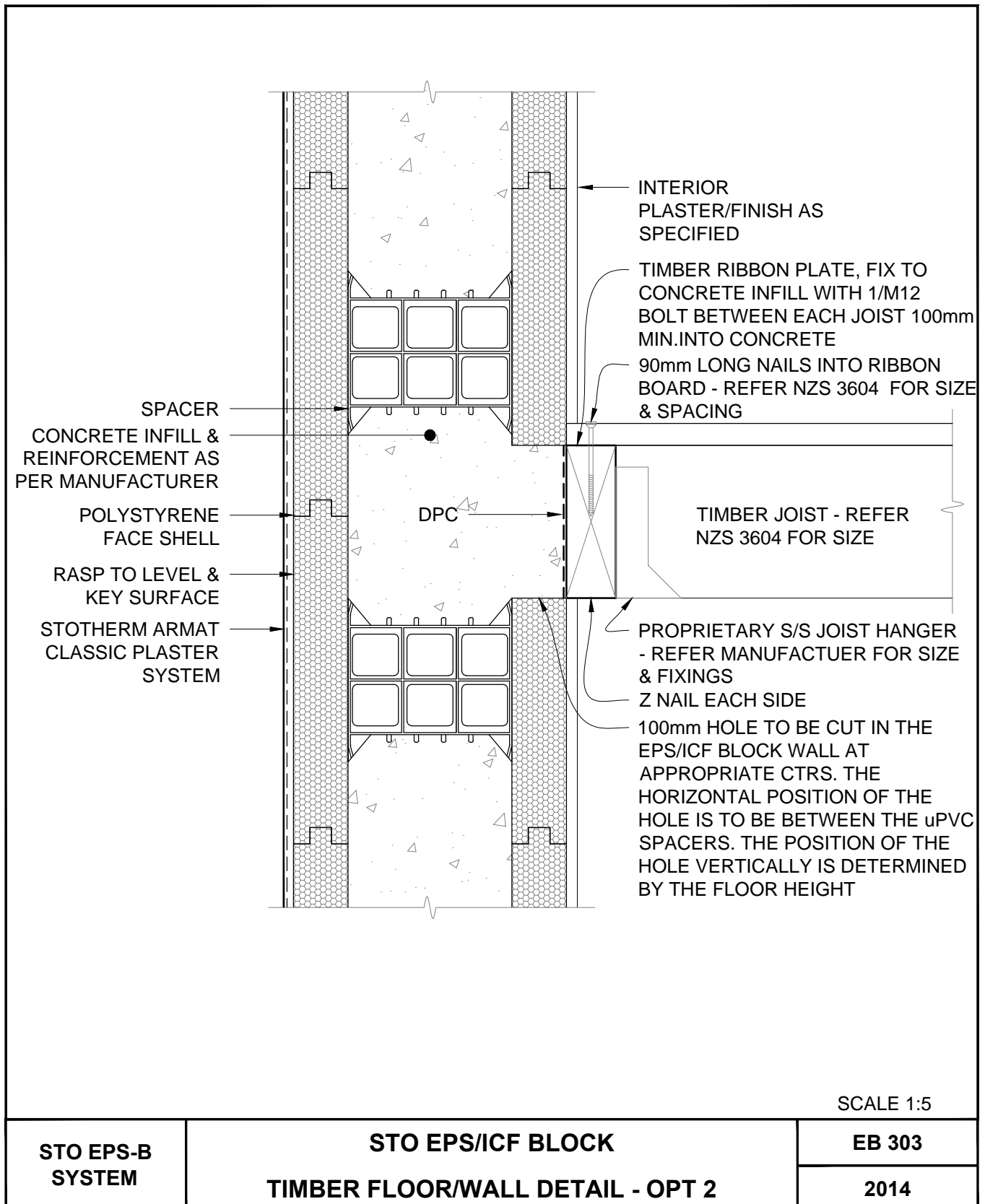
SCALE 1:10

STO EPS-B SYSTEM	STO EPS/ICF BLOCK INTERNAL CORNER	EB 301
		2014

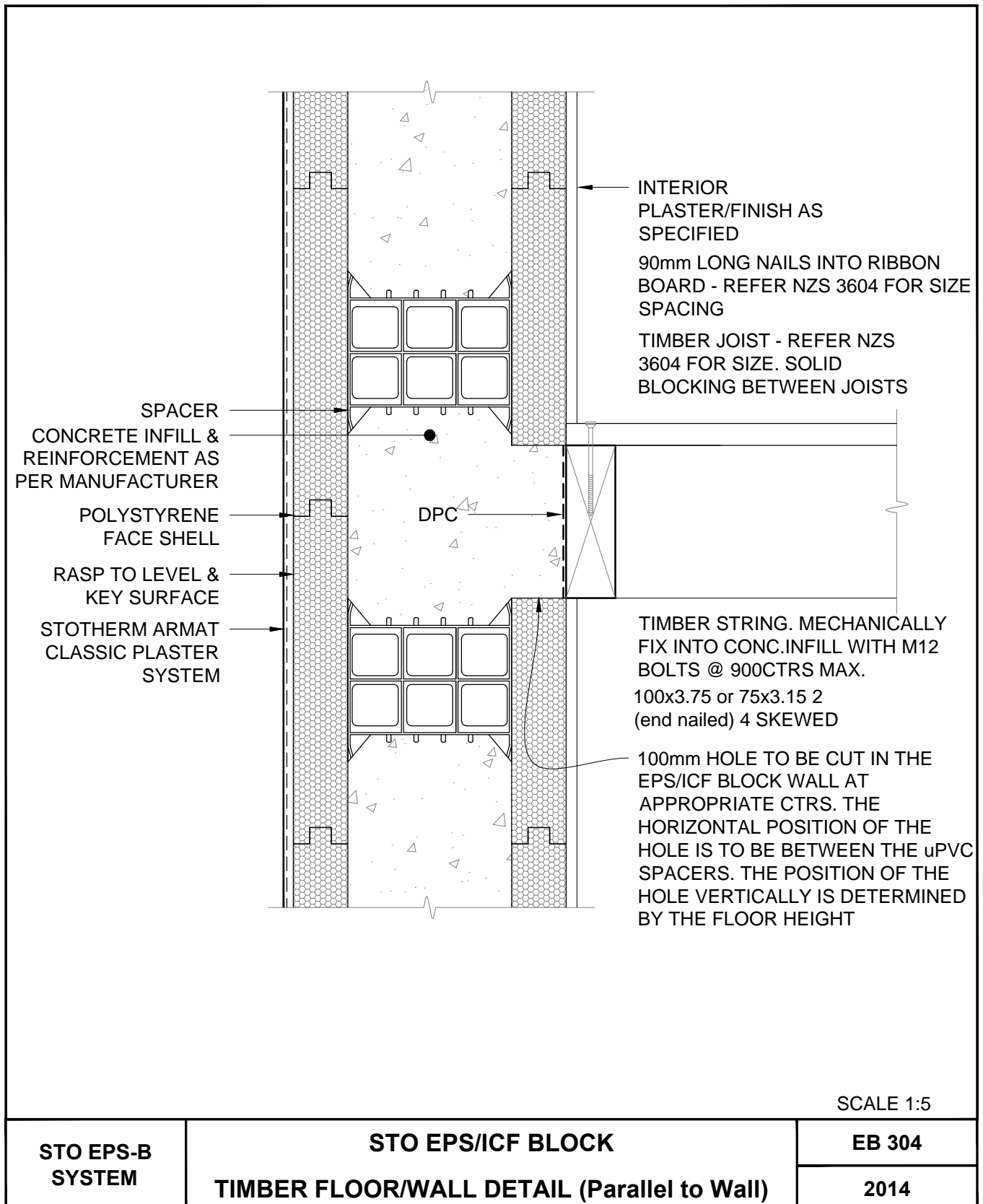
The information contained in this detail is based on our experience and testing and represents the latest information available at the date of issue. This detail is intended for use by the design professional and users of Sto products to assist in developing specific project details to be used in conjunction with a Sto Specification. We reserve the right to alter or update information at any time without prior notice & it is the responsibility of the specifier and/or the project manager to insure that they have the current Sto details and specifications.



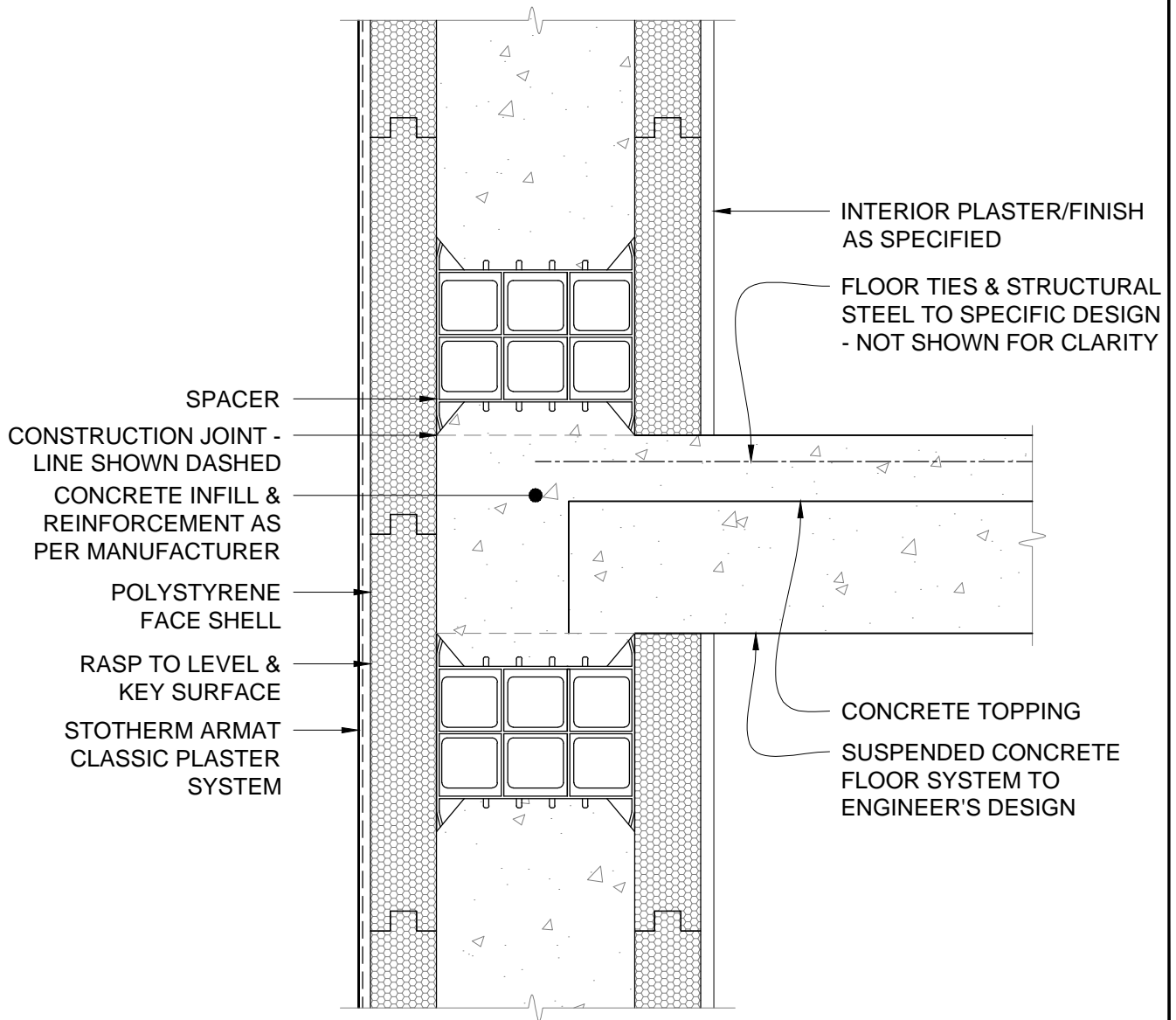
The information contained in this detail is based on our experience and testing and represents the latest information available at the date of issue. This detail is intended for use by the design professional and users of Sto products to assist in developing specific project details to be used in conjunction with a Sto Specification. We reserve the right to alter or update information at any time without prior notice & it is the responsibility of the specifier and/or the project manager to insure that they have the current Sto details and specifications.



The information contained in this detail is based on our experience and testing and represents the latest information available at the date of issue. This detail is intended for use by the design professional and users of Sto products to assist in developing specific project details to be used in conjunction with a Sto Specification. We reserve the right to alter or update information at any time without prior notice & it is the responsibility of the specifier and/or the project manager to insure that they have the current Sto details and specifications.



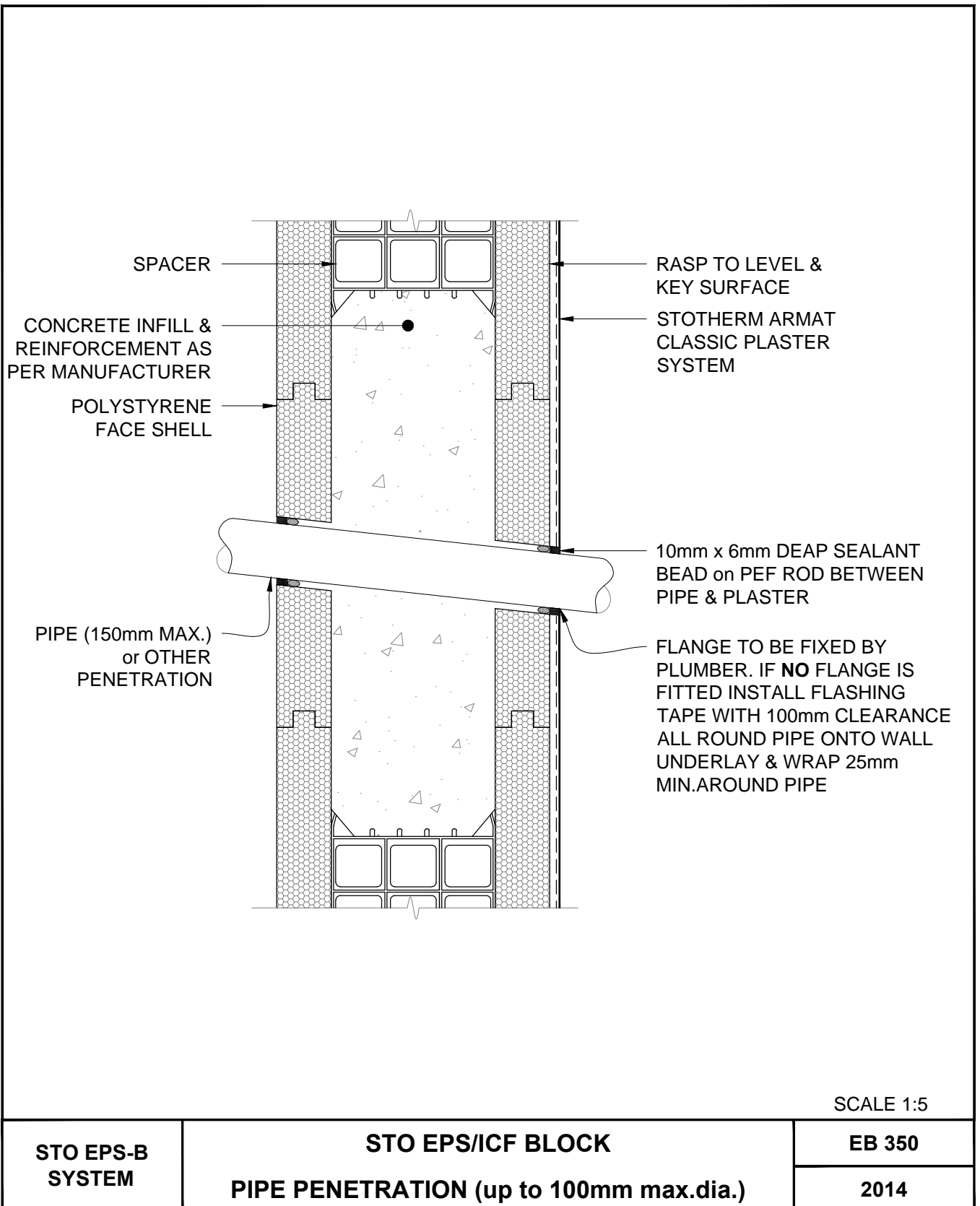
The information contained in this detail is based on our experience and testing and represents the latest information available at the date of issue. This detail is intended for use by the design professional and users of Sto products to assist in developing specific project details to be used in conjunction with a Sto Specification. We reserve the right to alter or update information at any time without prior notice & it is the responsibility of the specifier and/or the project manager to insure that they have the current Sto details and specifications.



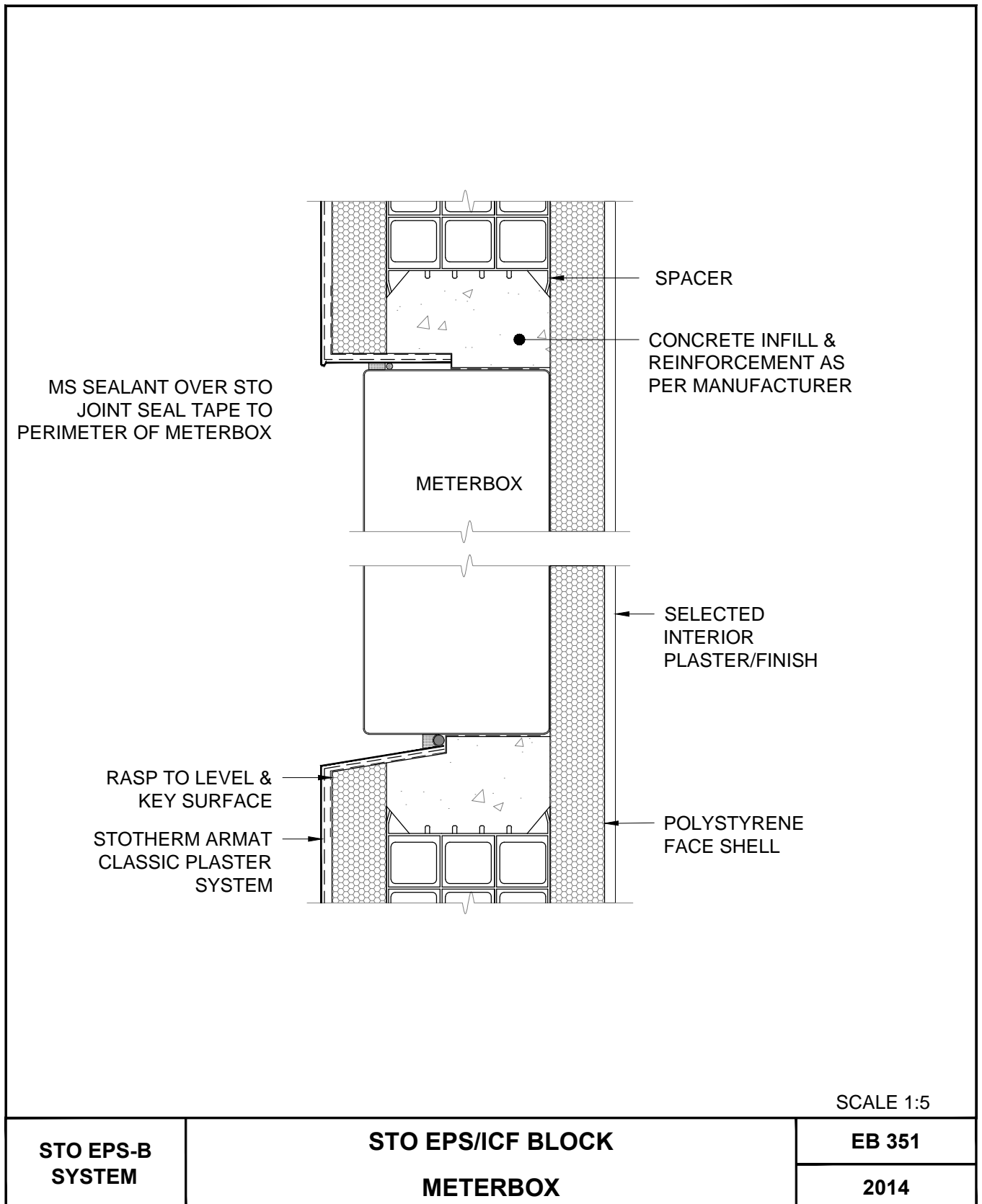
SCALE 1:5

STO EPS-B SYSTEM	STO EPS/ICF BLOCK CONCRETE FLOOR/WALL DETAIL	EB 305
		2014

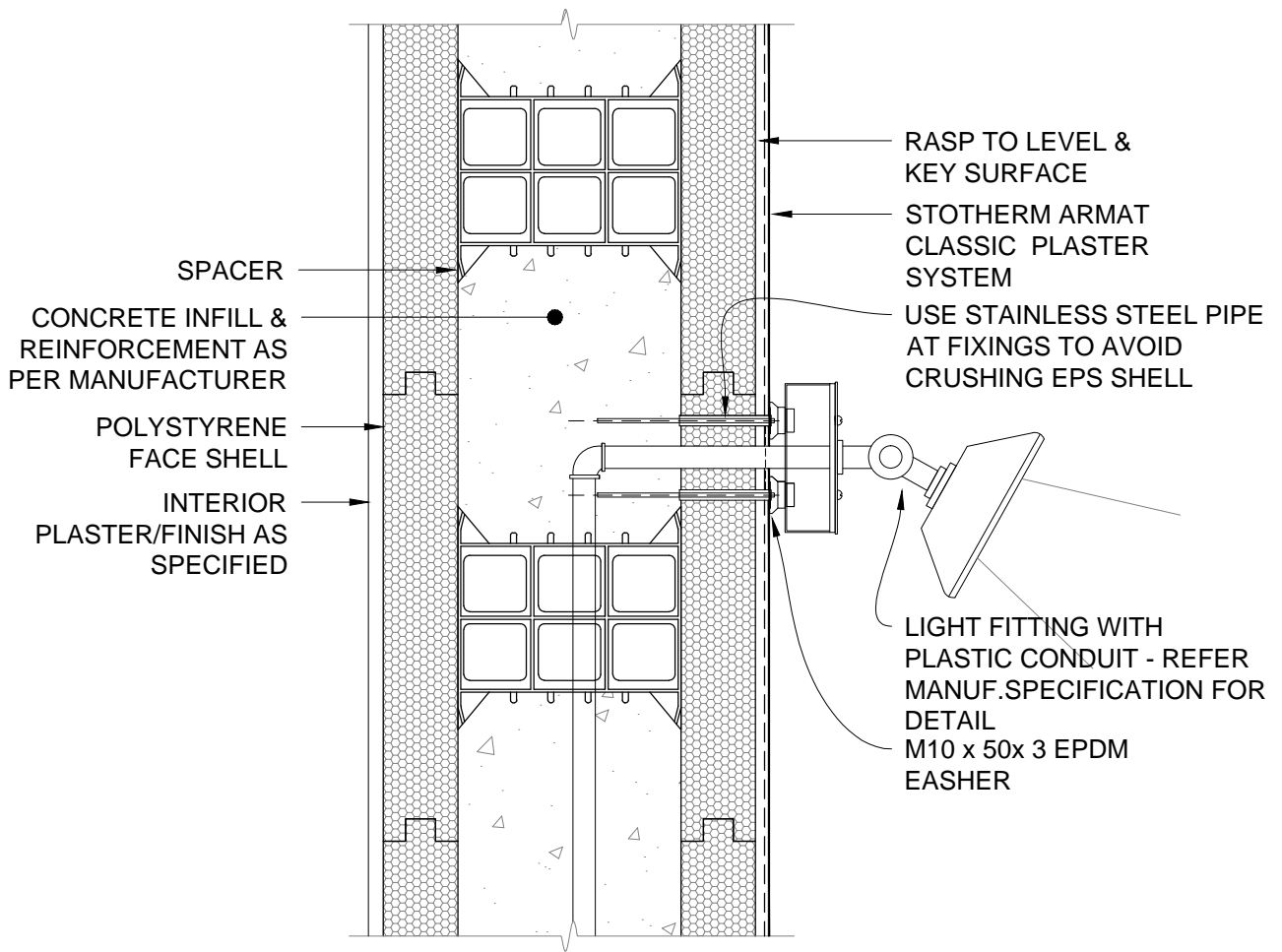
The information contained in this detail is based on our experience and testing and represents the latest information available at the date of issue. This detail is intended for use by the design professional and users of Sto products to assist in developing specific project details to be used in conjunction with a Sto Specification. We reserve the right to alter or update information at any time without prior notice & it is the responsibility of the specifier and/or the project manager to insure that they have the current Sto details and specifications.



The information contained in this detail is based on our experience and testing and represents the latest information available at the date of issue. This detail is intended for use by the design professional and users of Sto products to assist in developing specific project details to be used in conjunction with a Sto Specification. We reserve the right to alter or update information at any time without prior notice & it is the responsibility of the specifier and/or the project manager to insure that they have the current Sto details and specifications.



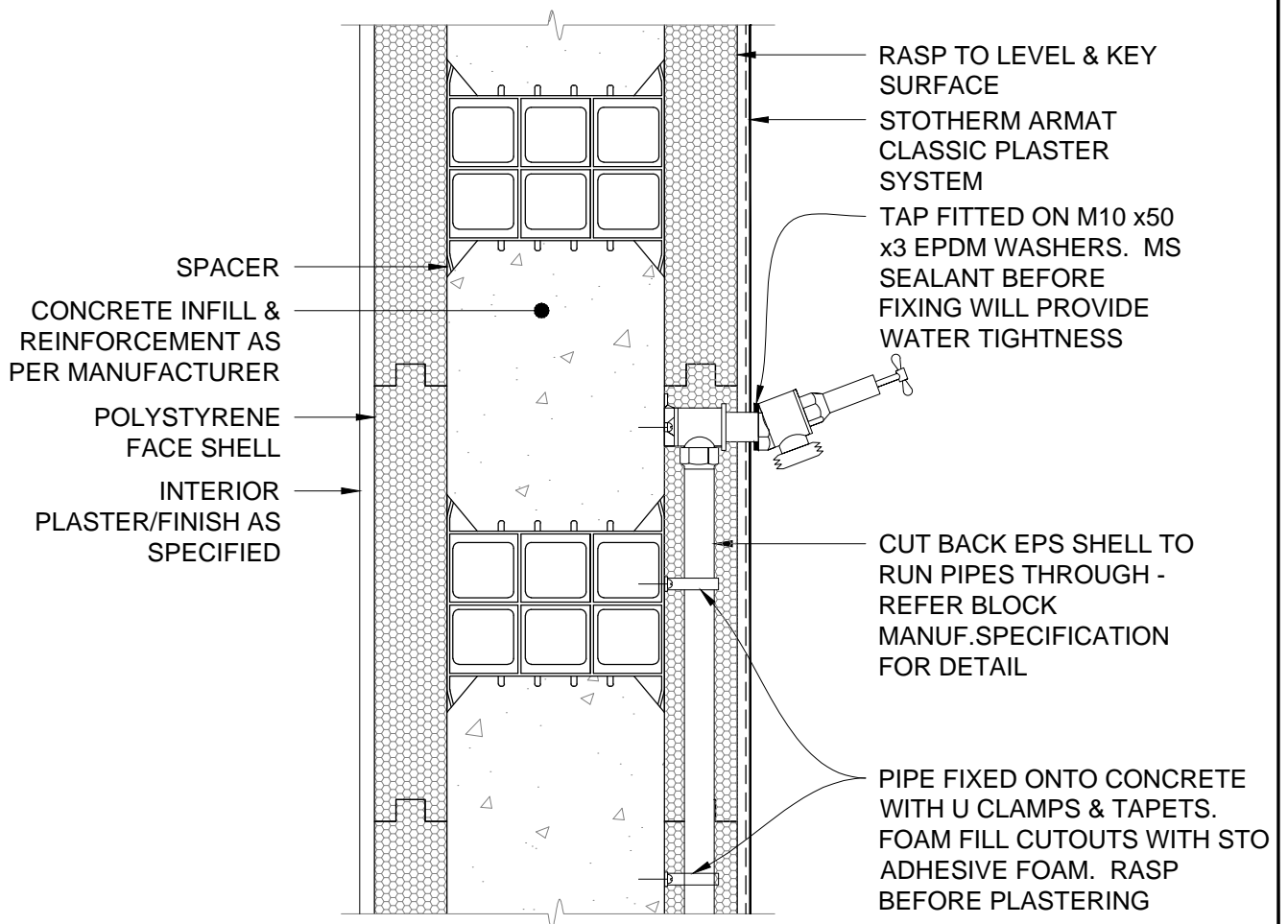
The information contained in this detail is based on our experience and testing and represents the latest information available at the date of issue. This detail is intended for use by the design professional and users of Sto products to assist in developing specific project details to be used in conjunction with a Sto Specification. We reserve the right to alter or update information at any time without prior notice & it is the responsibility of the specifier and/or the project manager to insure that they have the current Sto details and specifications.



SCALE 1:5

STO EPS-B SYSTEM	STO EPS/ICF BLOCK LIGHT FITTING/FIXING DETAIL	EB 352
		2014

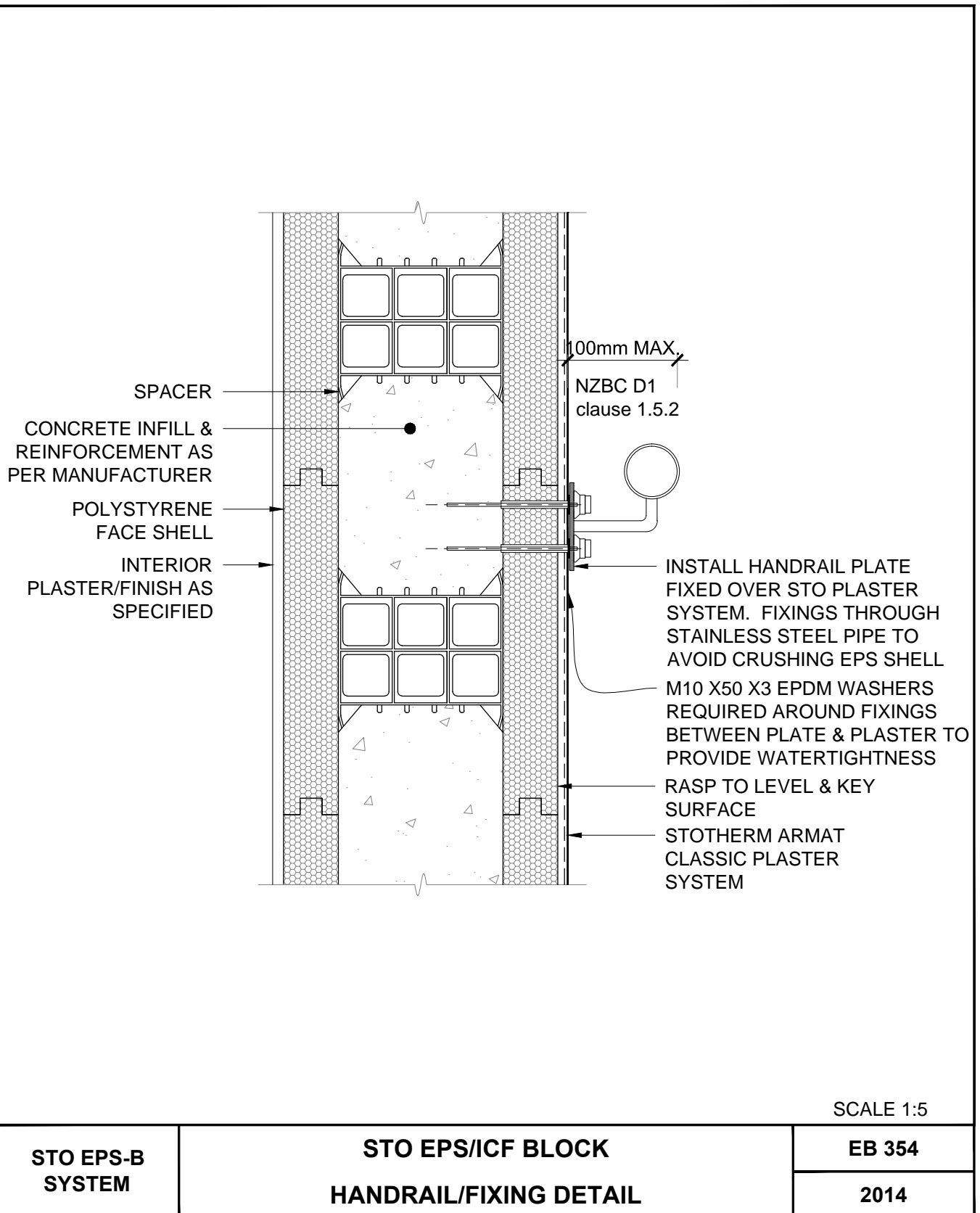
The information contained in this detail is based on our experience and testing and represents the latest information available at the date of issue. This detail is intended for use by the design professional and users of Sto products to assist in developing specific project details to be used in conjunction with a Sto Specification. We reserve the right to alter or update information at any time without prior notice & it is the responsibility of the specifier and/or the project manager to insure that they have the current Sto details and specifications.



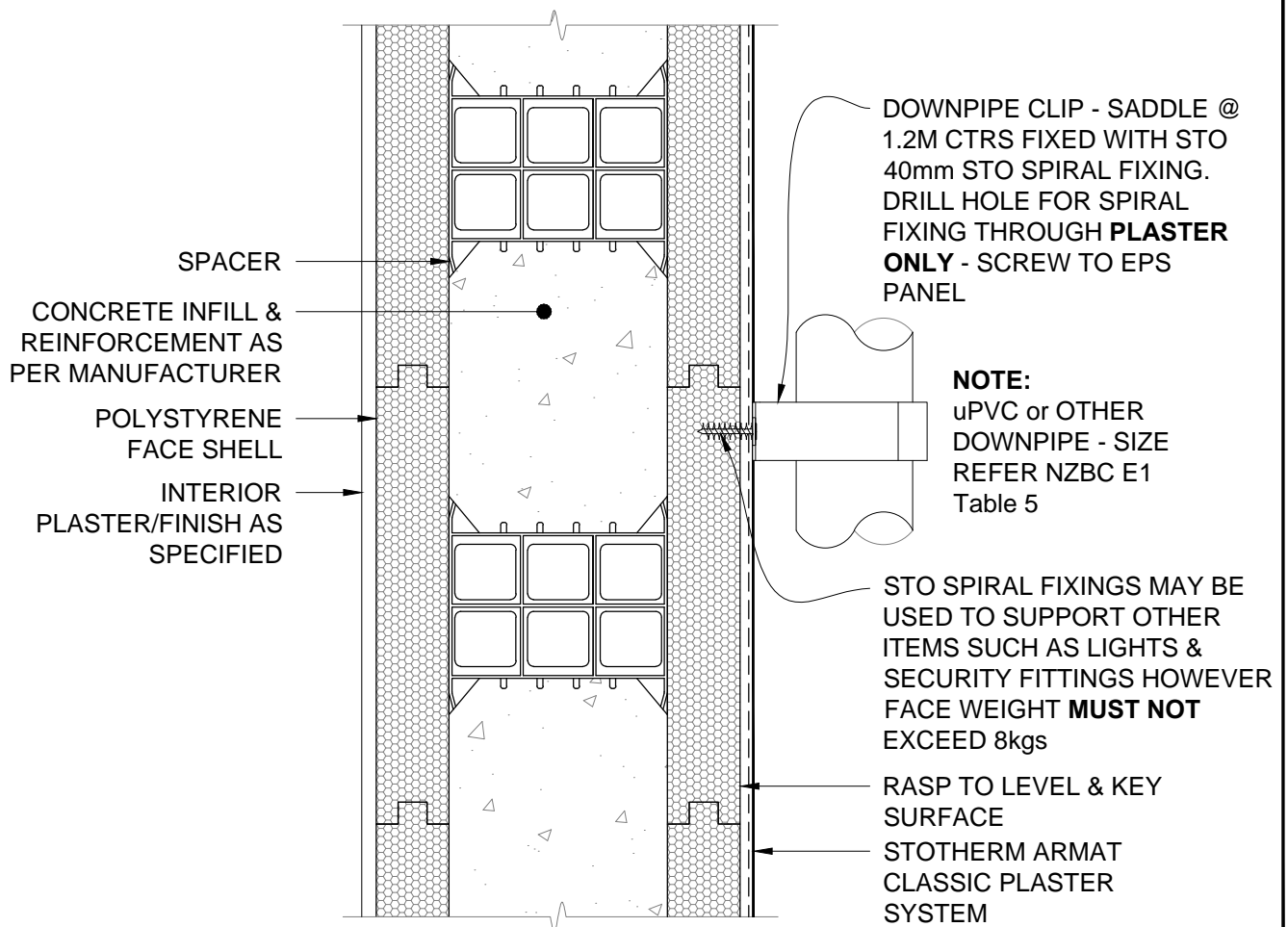
SCALE 1:5

STO EPS-B SYSTEM	STO EPS/ICF BLOCK TAP FITTING/FIXING DETAIL	EB 353
		2014

The information contained in this detail is based on our experience and testing and represents the latest information available at the date of issue. This detail is intended for use by the design professional and users of Sto products to assist in developing specific project details to be used in conjunction with a Sto Specification. We reserve the right to alter or update information at any time without prior notice & it is the responsibility of the specifier and/or the project manager to insure that they have the current Sto details and specifications.



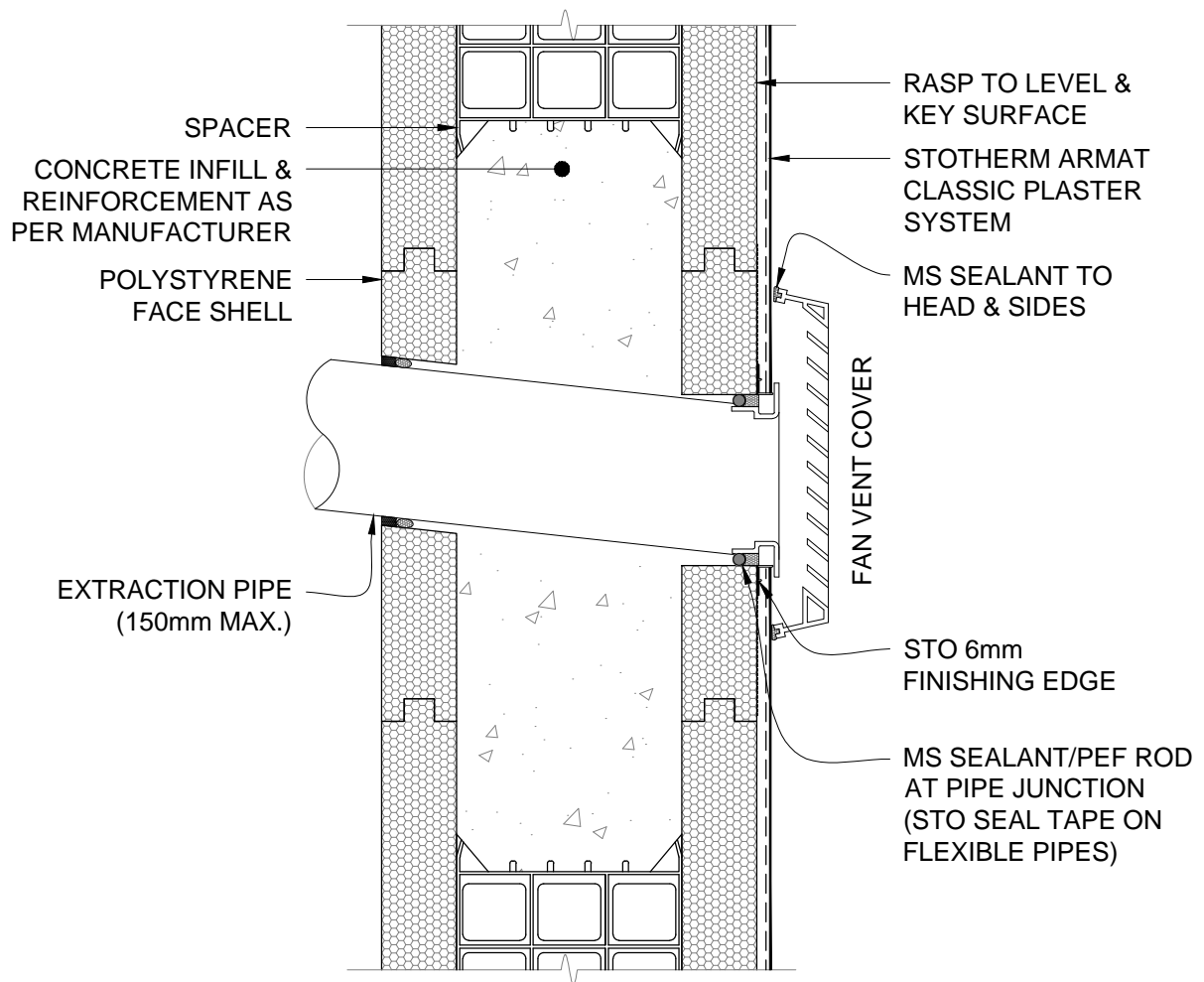
The information contained in this detail is based on our experience and testing and represents the latest information available at the date of issue. This detail is intended for use by the design professional and users of Sto products to assist in developing specific project details to be used in conjunction with a Sto Specification. We reserve the right to alter or update information at any time without prior notice & it is the responsibility of the specifier and/or the project manager to insure that they have the current Sto details and specifications.



SCALE 1:5

<p>STO EPS-B SYSTEM</p>	<p>STO EPS/ICF BLOCK</p> <p>DOWNPIPE SADDLE FIXING & WIRING DETAIL</p>	<p>EB 355</p> <p>2014</p>
--------------------------------	--	---

The information contained in this detail is based on our experience and testing and represents the latest information available at the date of issue. This detail is intended for use by the design professional and users of Sto products to assist in developing specific project details to be used in conjunction with a Sto Specification. We reserve the right to alter or update information at any time without prior notice & it is the responsibility of the specifier and/or the project manager to insure that they have the current Sto details and specifications.

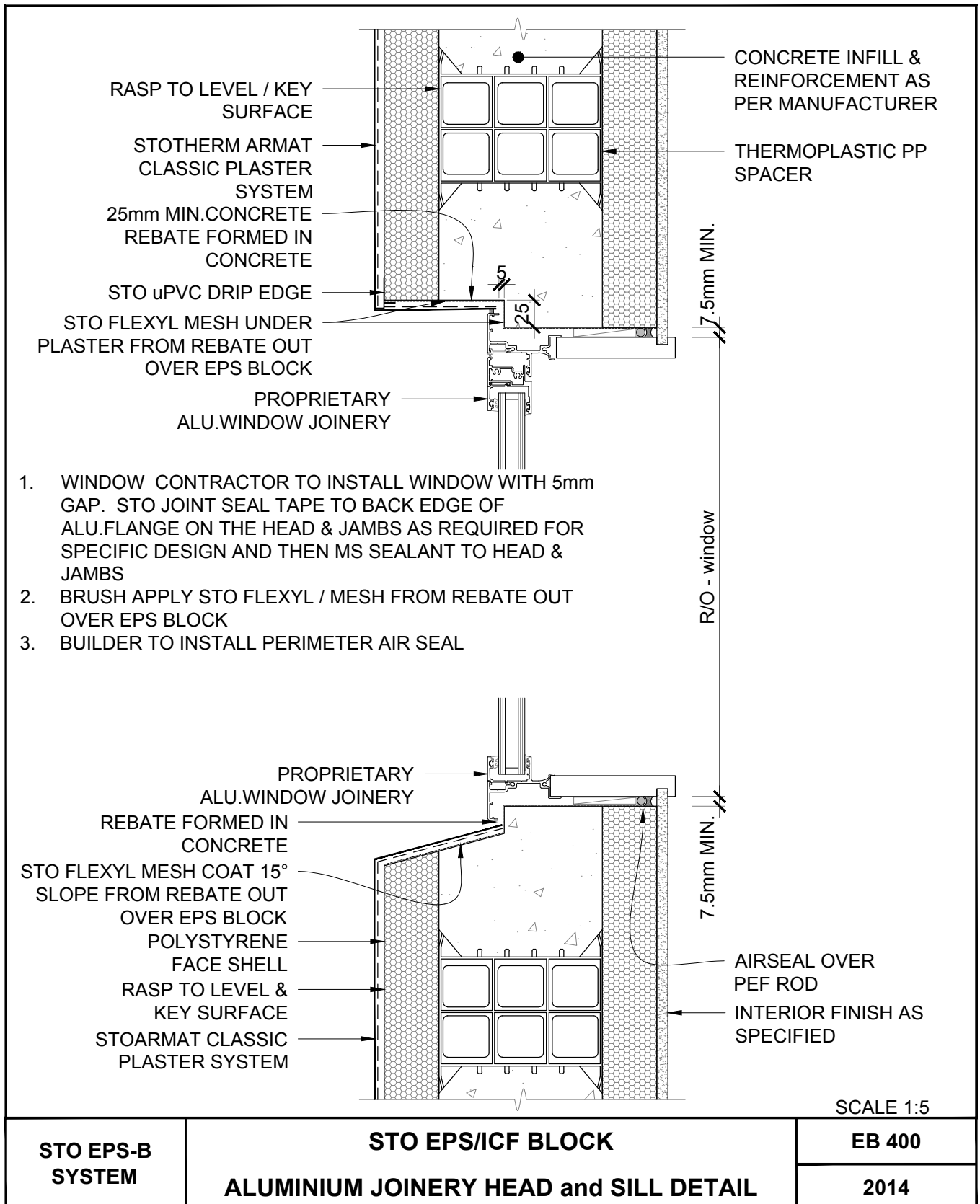


NOTE:

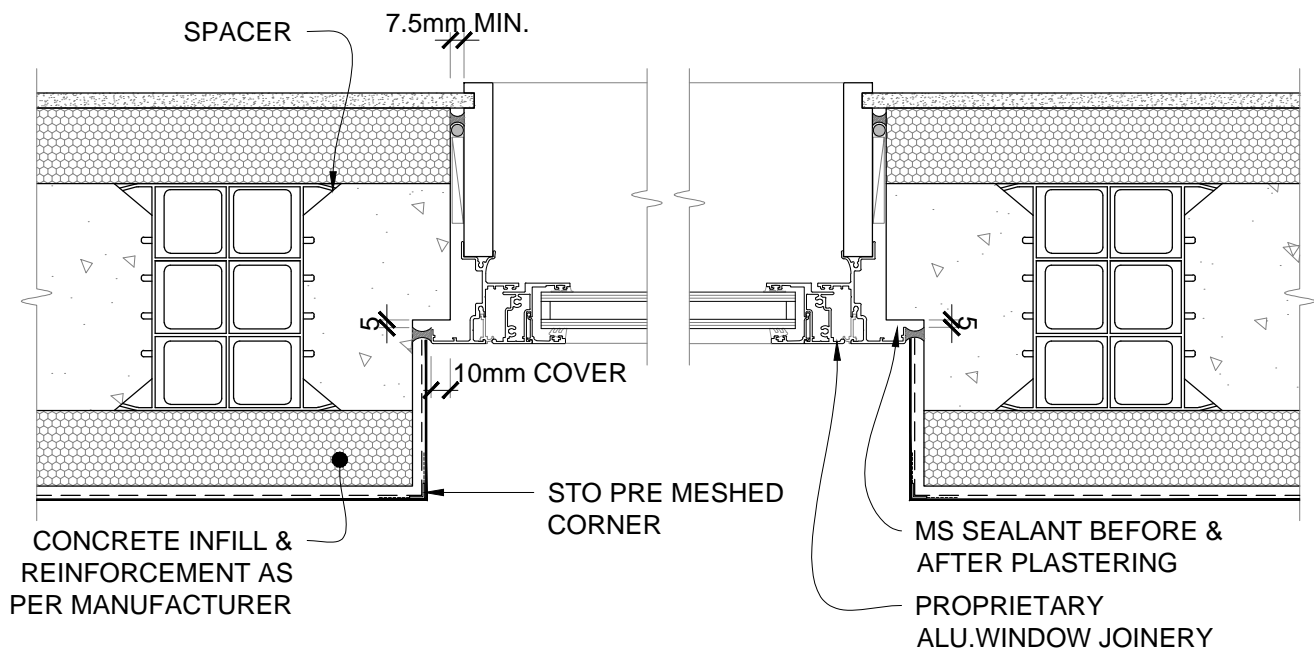
LEAVE 40mm DRAINAGE GAP IN SEALANT AT BOTTOM OF FANCOVER. INSTALL FLASHING TAPE 100mm AROUND PIPE & 25mm ROUND PPIPE. FOR FLEXIBLE PIPES, TAPE PIPE TO FAN COVER APPLY STO JOINT SEAL TAPE AROUND. TAPE BEFORE PLACING IN HOLE. ALWAYS FINISH PLASTER BEFORE INSTALLING FAN COVER

SCALE 1:5

<p>STO EPS-B SYSTEM</p>	<p>STO EPS/ICF BLOCK</p> <p>FAN VENT DETAIL</p>	<p>EB 356</p> <p>2014</p>
------------------------------------	---	---



The information contained in this detail is based on our experience and testing and represents the latest information available at the date of issue. This detail is intended for use by the design professional and users of Sto products to assist in developing specific project details to be used in conjunction with a Sto Specification. We reserve the right to alter or update information at any time without prior notice & it is the responsibility of the specifier and/or the project manager to insure that they have the current Sto details and specifications.



1. WINDOW CONTRACTOR TO INSTALL WINDOW WITH 5mm GAP. STO JOINT SEAL TAPE TO BACK EDGE OF ALU.FLANGE ON THE HEAD & JAMBS AS REQUIRED FOR SPECIFIC DESIGN AND THEN MS SEALANT TO HEAD & JAMBS
2. BRUSH APPLY STO FLEXYL / MESH FROM REBATE OUT OVER EPS BLOCK
3. BUILDER TO INSTALL PERIMETER AIR SEAL

WARNING

SOME BRANDS OF ALUMINUM JOINERY HAVE DRAINAGE VENTS IN THE BOTTOM EDGE OF THE SILL FLANGE. ENSURE DRAINAGE VENTS REMAIN CLEAR

SCALE 1:5

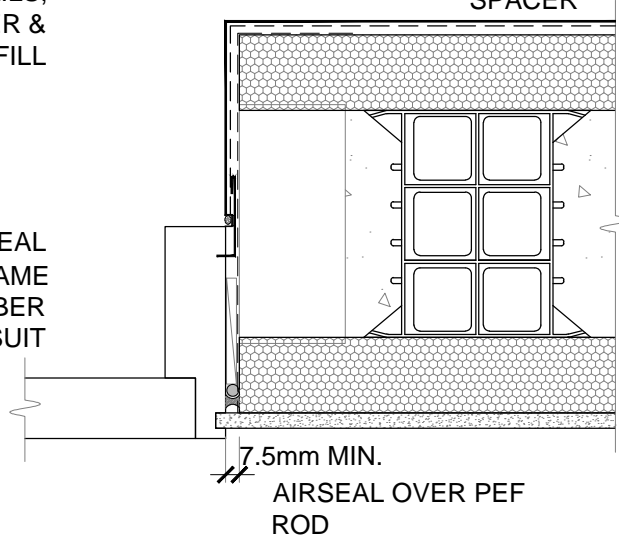
STO EPS-B SYSTEM	STO EPS/ICF BLOCK ALUMINIUM JOINERY JAMB DETAIL	EB 401
		2014

The information contained in this detail is based on our experience and testing and represents the latest information available at the date of issue. This detail is intended for use by the design professional and users of Sto products to assist in developing specific project details to be used in conjunction with a Sto Specification. We reserve the right to alter or update information at any time without prior notice & it is the responsibility of the specifier and/or the project manager to insure that they have the current Sto details and specifications.

70x45mm H3.1 TIMBER
BLOCKS @ 600CTRS LENGTH
OF BLOCK TO SUIT WIDTH
OF CONCRETE INFILL - FIX
WITH 100mm GALV.NAILS,
SKEW NAILED TO TIMBER &
CAST IN CONCRETE INFILL

CONCRETE INFILL &
REINFORCEMENT AS
PER MANUFACTURER
THERMOPLASTIC PP
SPACER

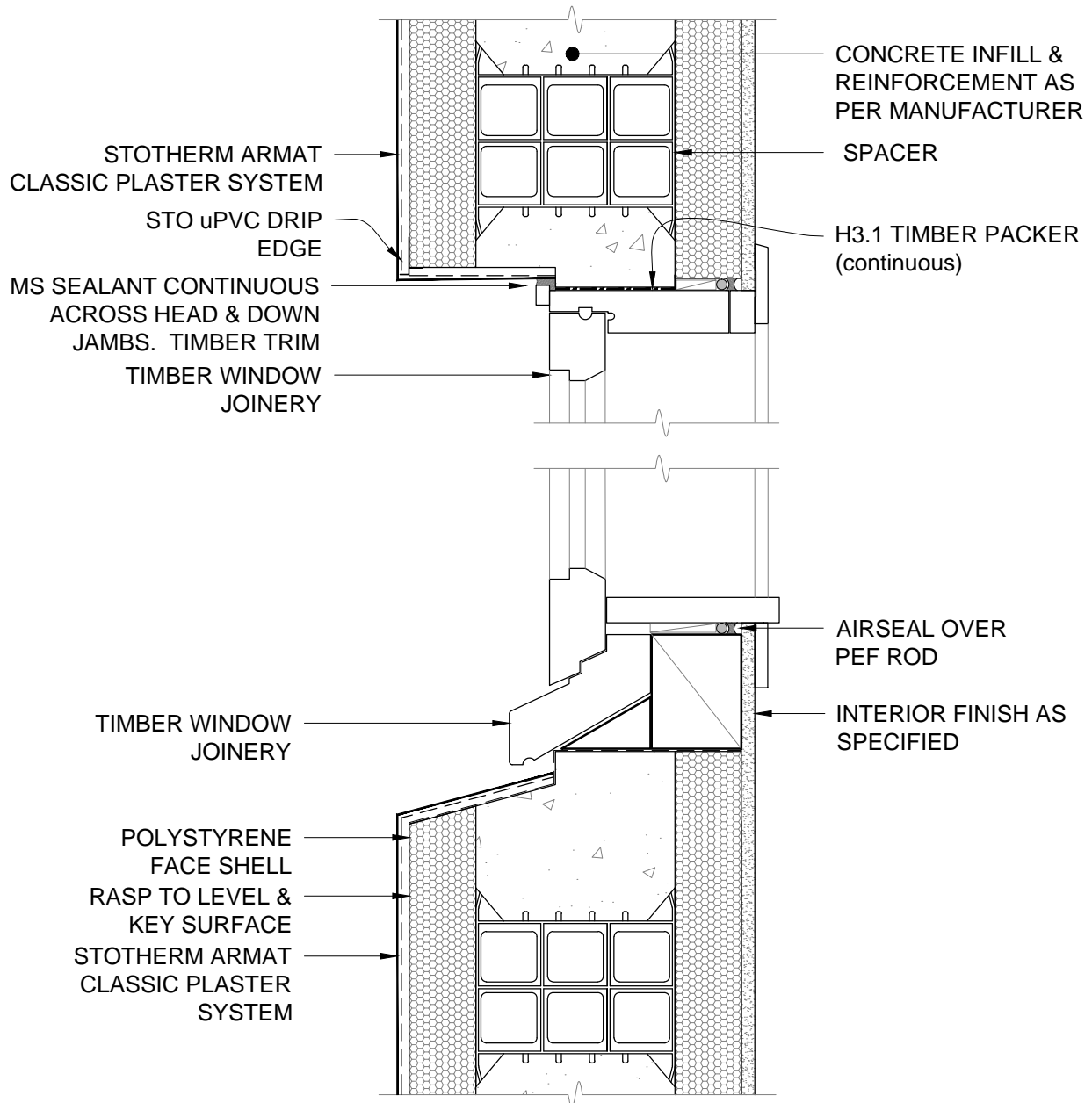
REBATED REVEAL
DOOR FRAME
H3.1 TIMBER
PACKER TO SUIT



SCALE 1:5

STO EPS-B SYSTEM	STO EPS/ICF BLOCK DOOR JAMB DETAIL	EB 403
		2014

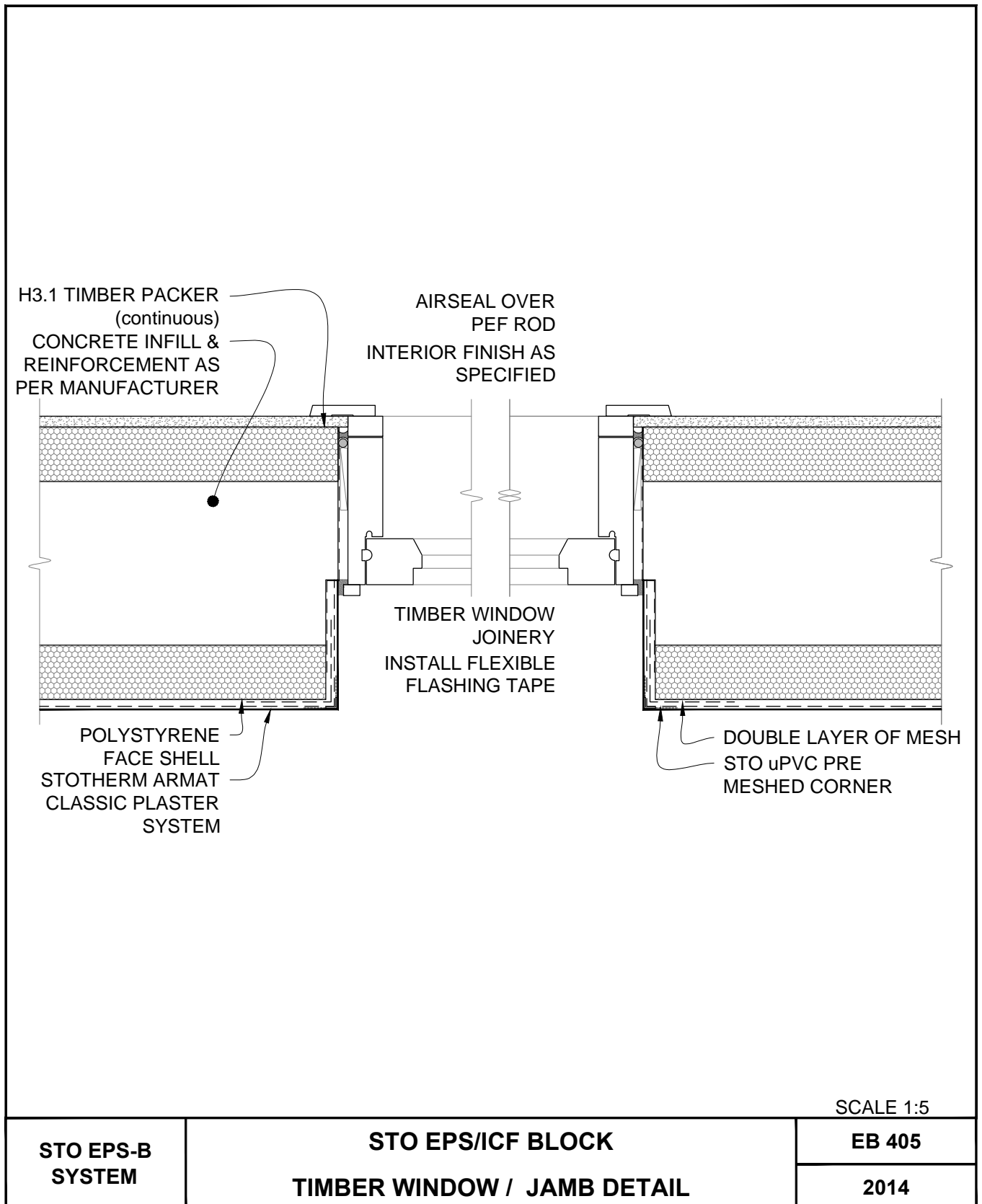
The information contained in this detail is based on our experience and testing and represents the latest information available at the date of issue. This detail is intended for use by the design professional and users of Sto products to assist in developing specific project details to be used in conjunction with a Sto Specification. We reserve the right to alter or update information at any time without prior notice & it is the responsibility of the specifier and/or the project manager to insure that they have the current Sto details and specifications.



SCALE 1:5

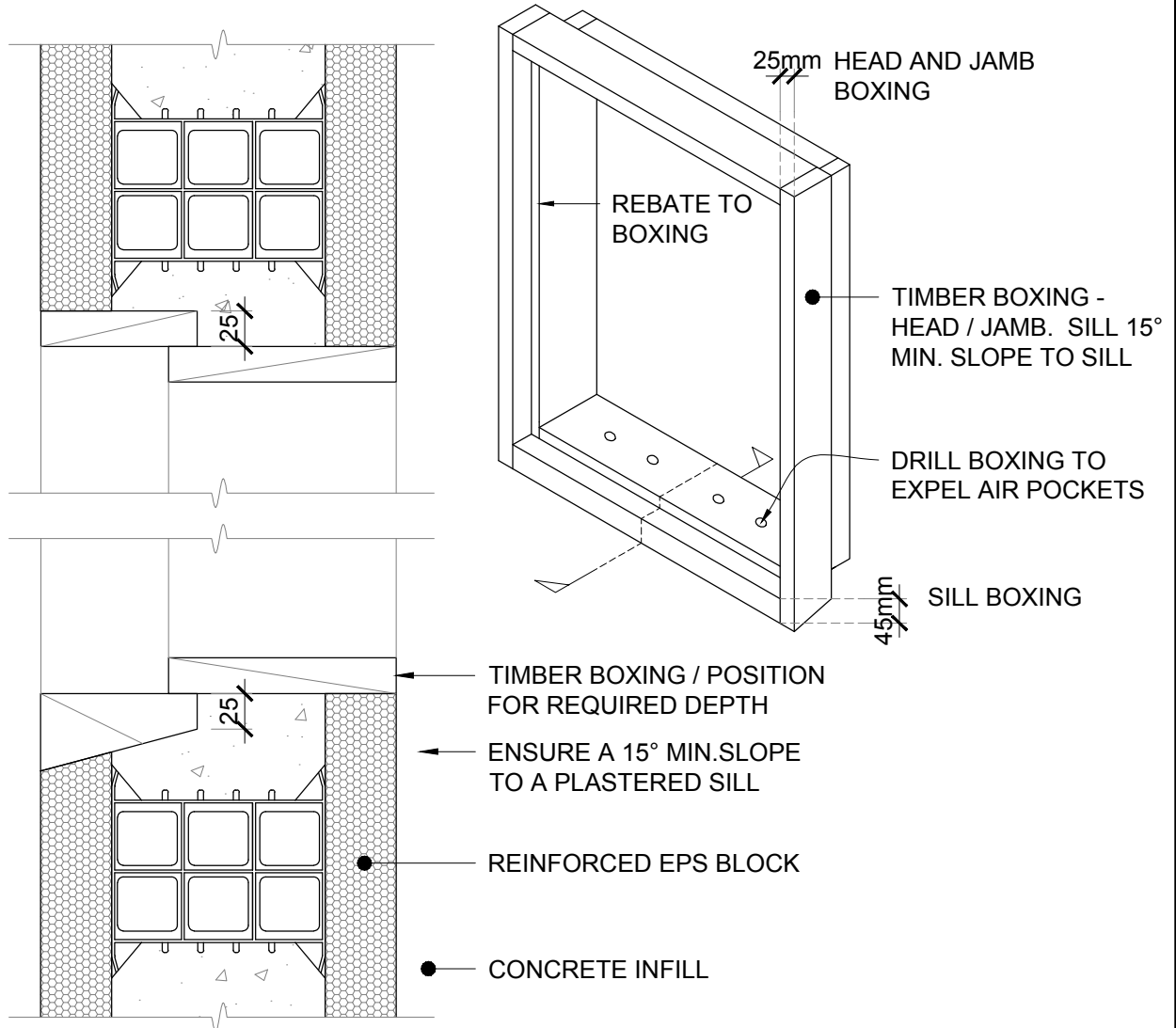
STO EPS-B SYSTEM	STO EPS/ICF BLOCK TIMBER JOINERY HEAD and SILL DETAIL	EB 404
		2014

The information contained in this detail is based on our experience and testing and represents the latest information available at the date of issue. This detail is intended for use by the design professional and users of Sto products to assist in developing specific project details to be used in conjunction with a Sto Specification. We reserve the right to alter or update information at any time without prior notice & it is the responsibility of the specifier and/or the project manager to insure that they have the current Sto details and specifications.



The information contained in this detail is based on our experience and testing and represents the latest information available at the date of issue. This detail is intended for use by the design professional and users of Sto products to assist in developing specific project details to be used in conjunction with a Sto Specification. We reserve the right to alter or update information at any time without prior notice & it is the responsibility of the specifier and/or the project manager to insure that they have the current Sto details and specifications.

HEAD / JAMB DETAIL



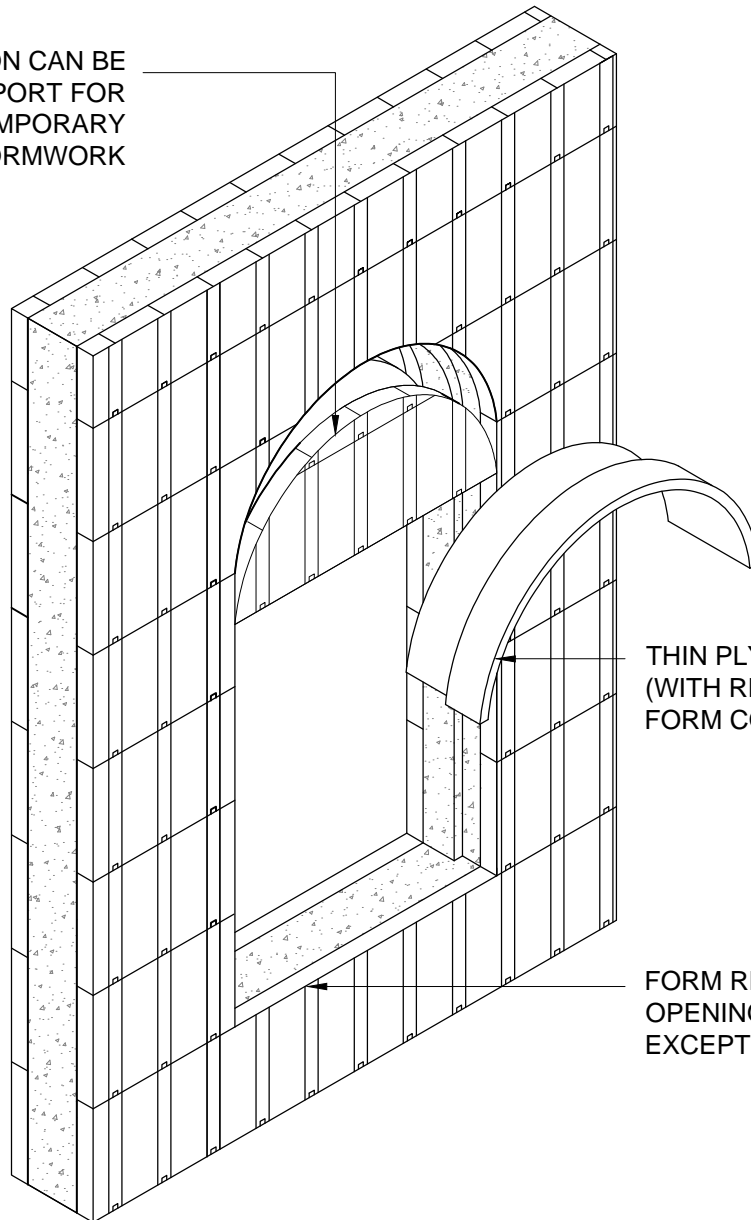
NOTE:

THIS IS A DETAIL FOR A 25mm CONCRETE REBATE IN THE WINDOW OPENING WITH STO EPS BLOCK CONSTRUCTION

STO EPS-B SYSTEM	STO EPS/ICF BLOCK FOR SOLID MASONRY REBATES	EB 406
		2014

The information contained in this detail is based on our experience and testing and represents the latest information available at the date of issue. This detail is intended for use by the design professional and users of Sto products to assist in developing specific project details to be used in conjunction with a Sto Specification. We reserve the right to alter or update information at any time without prior notice & it is the responsibility of the specifier and/or the project manager to insure that they have the current Sto details and specifications.

CUT OUT SECTION CAN BE
USED AS SUPPORT FOR
THE CURVED TEMPORARY
FORMWORK



THIN PLYWOOD OR STEEL
(WITH REBATE) CURVED TO
FORM CONCRETE BARRIER

FORM RECTANGULAR
OPENING IN USUAL MANNER
EXCEPT FOR HEAD DETAIL

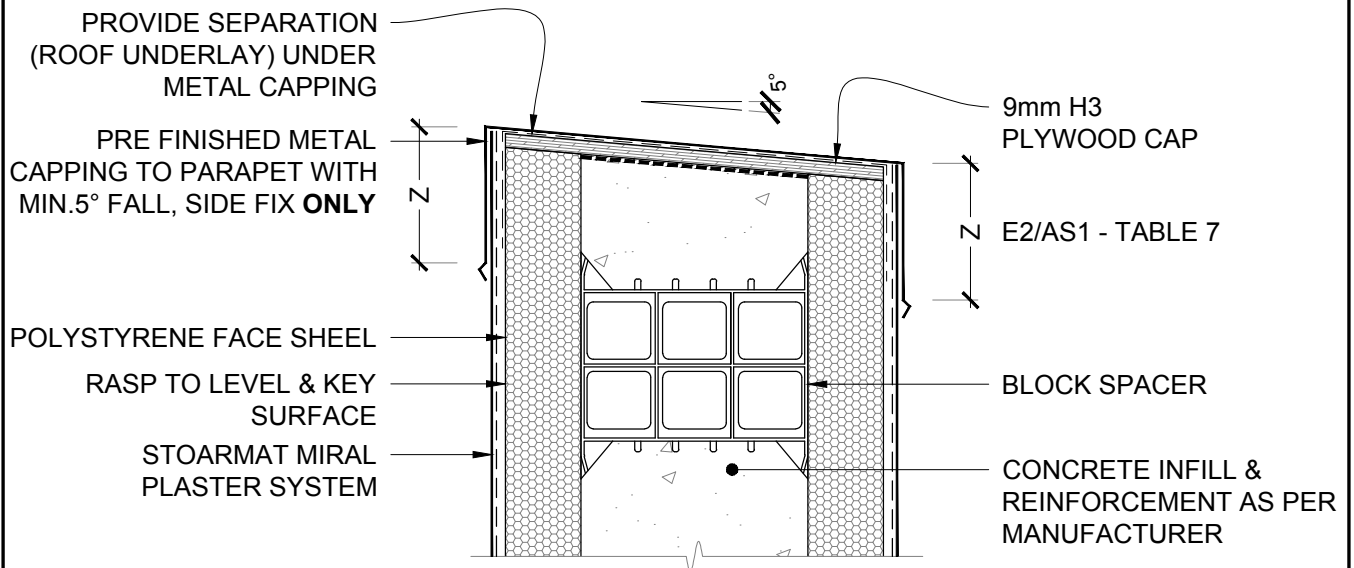
**STO EPS-B
SYSTEM**

**STO EPS/ICF BLOCK
FOR ARCHED OPENINGS**

EB 407

2014

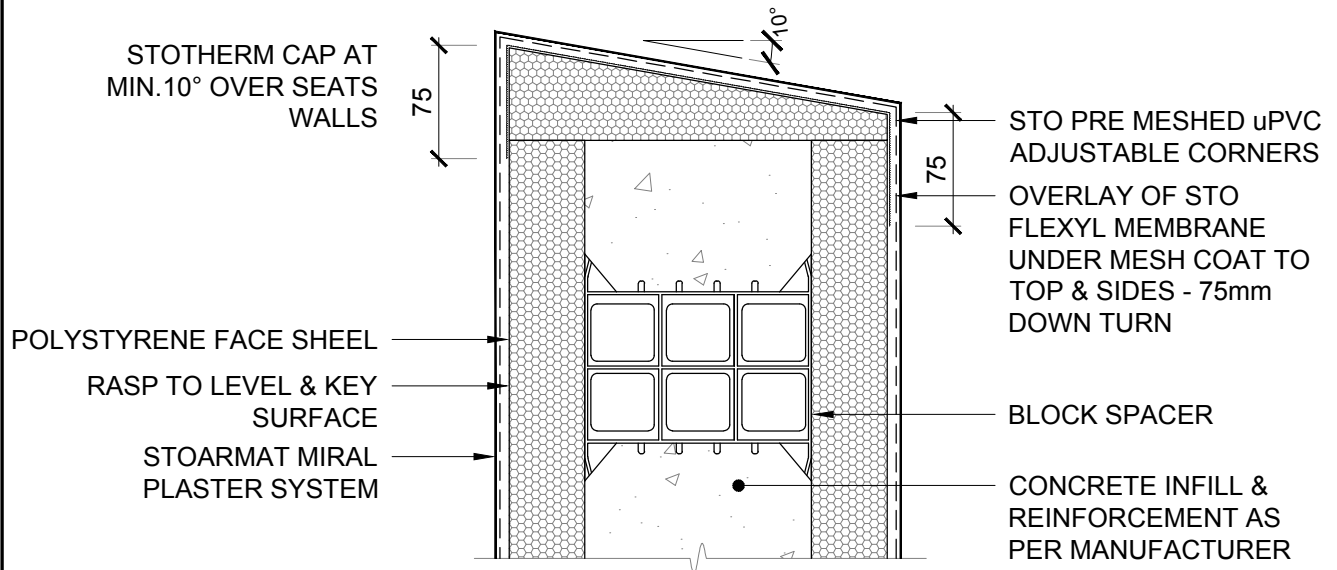
The information contained in this detail is based on our experience and testing and represents the latest information available at the date of issue. This detail is intended for use by the design professional and users of Sto products to assist in developing specific project details to be used in conjunction with a Sto Specification. We reserve the right to alter or update information at any time without prior notice & it is the responsibility of the specifier and/or the project manager to insure that they have the current Sto details and specifications.



SCALE 1:5

STO EPS-B SYSTEM	STO EPS/ICF BLOCK PARAPET - METAL FLASHING DETAIL	EB 500
		2014

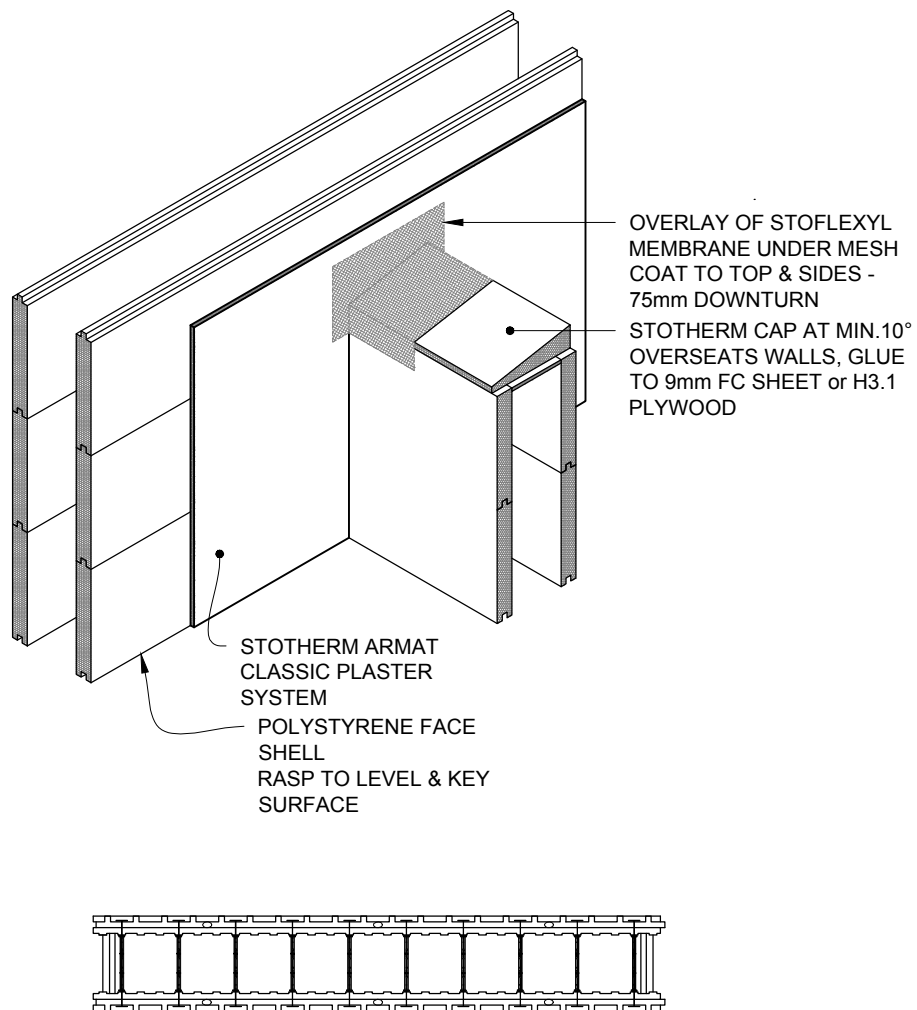
The information contained in this detail is based on our experience and testing and represents the latest information available at the date of issue. This detail is intended for use by the design professional and users of Sto products to assist in developing specific project details to be used in conjunction with a Sto Specification. We reserve the right to alter or update information at any time without prior notice & it is the responsibility of the specifier and/or the project manager to insure that they have the current Sto details and specifications.



SCALE 1:5

STO EPS-B SYSTEM	STO EPS/ICF BLOCK PLASTERED PARAPET/BALUSTRADE DETAIL	EB 501
		2014

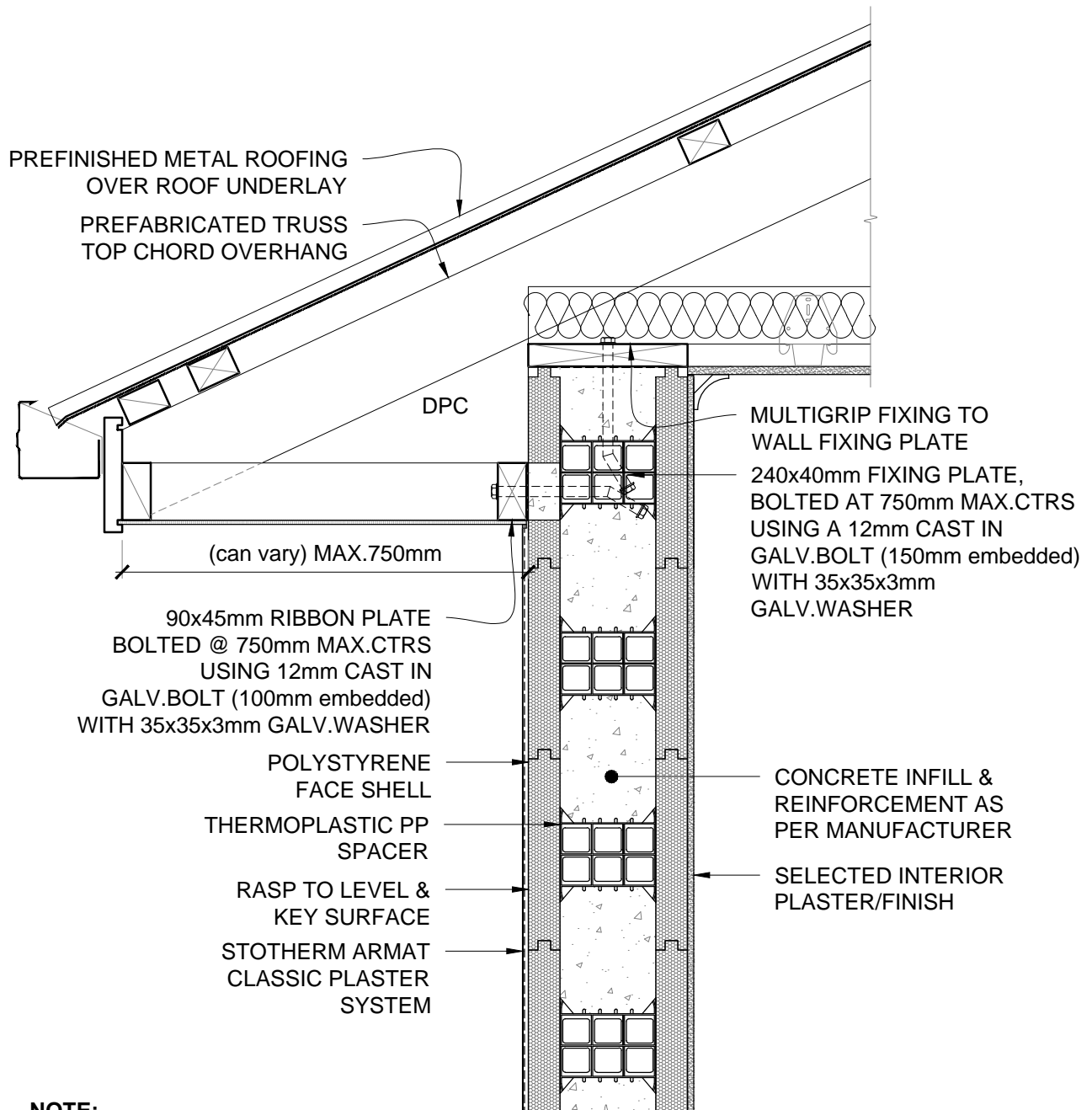
The information contained in this detail is based on our experience and testing and represents the latest information available at the date of issue. This detail is intended for use by the design professional and users of Sto products to assist in developing specific project details to be used in conjunction with a Sto Specification. We reserve the right to alter or update information at any time without prior notice & it is the responsibility of the specifier and/or the project manager to insure that they have the current Sto details and specifications.



SCALE 1:20

STO EPS-B SYSTEM	STO EPS/ICF BLOCK BALUSTRADE/PARAPET to WALL DETAIL	EB 502
		2014

The information contained in this detail is based on our experience and testing and represents the latest information available at the date of issue. This detail is intended for use by the design professional and users of Sto products to assist in developing specific project details to be used in conjunction with a Sto Specification. We reserve the right to alter or update information at any time without prior notice & it is the responsibility of the specifier and/or the project manager to insure that they have the current Sto details and specifications.

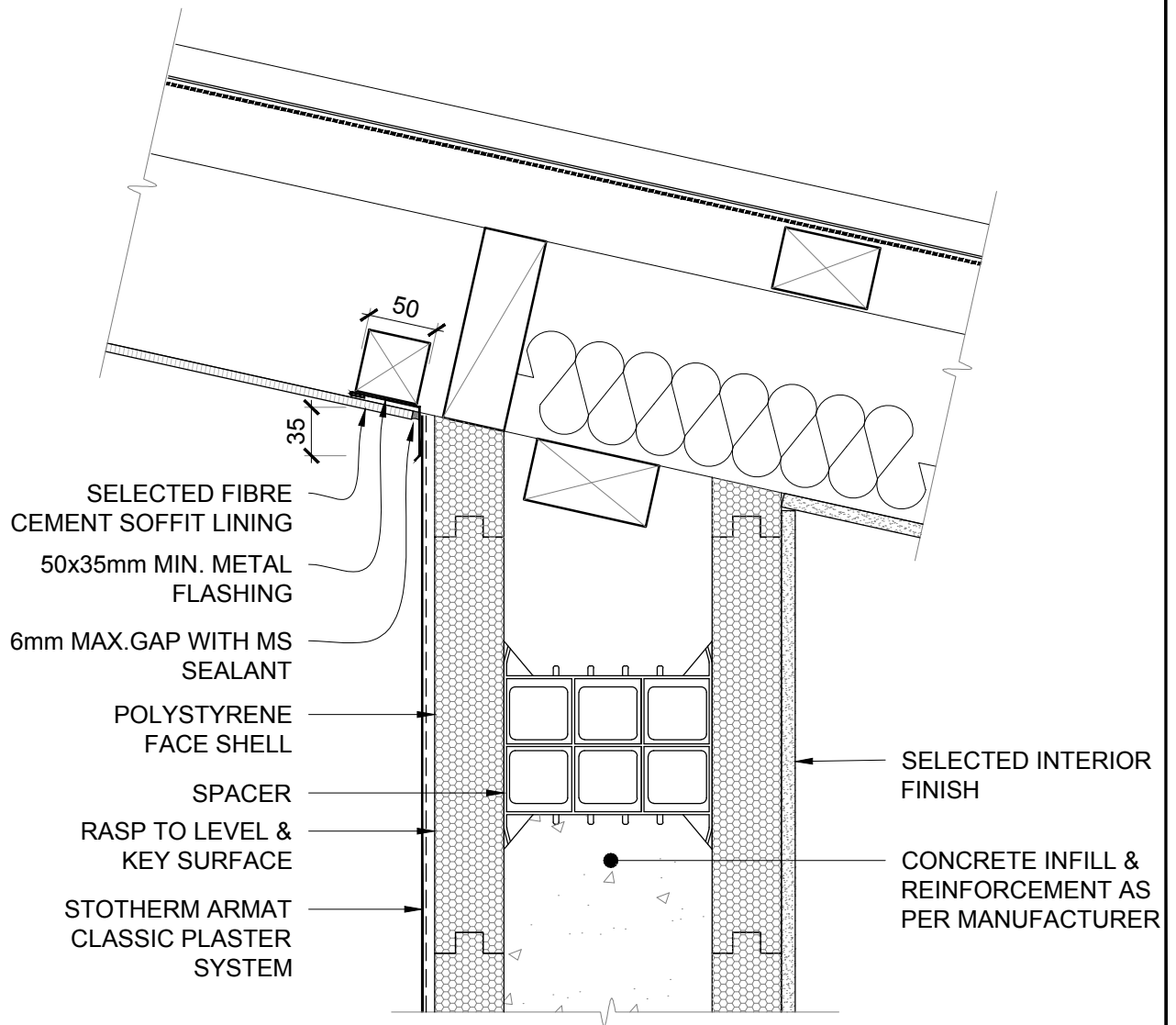


NOTE:
BOND BEAM/LINTEL REINFORCING -
REFER TO MANUFACTURER
SPECIFICATIONS & DETAILS

SCALE 1:10

STO EPS-B SYSTEM	STO EPS/ICF BLOCK TYPICAL EAVES DETAIL	EB 700
		2014

The information contained in this detail is based on our experience and testing and represents the latest information available at the date of issue. This detail is intended for use by the design professional and users of Sto products to assist in developing specific project details to be used in conjunction with a Sto Specification. We reserve the right to alter or update information at any time without prior notice & it is the responsibility of the specifier and/or the project manager to insure that they have the current Sto details and specifications.



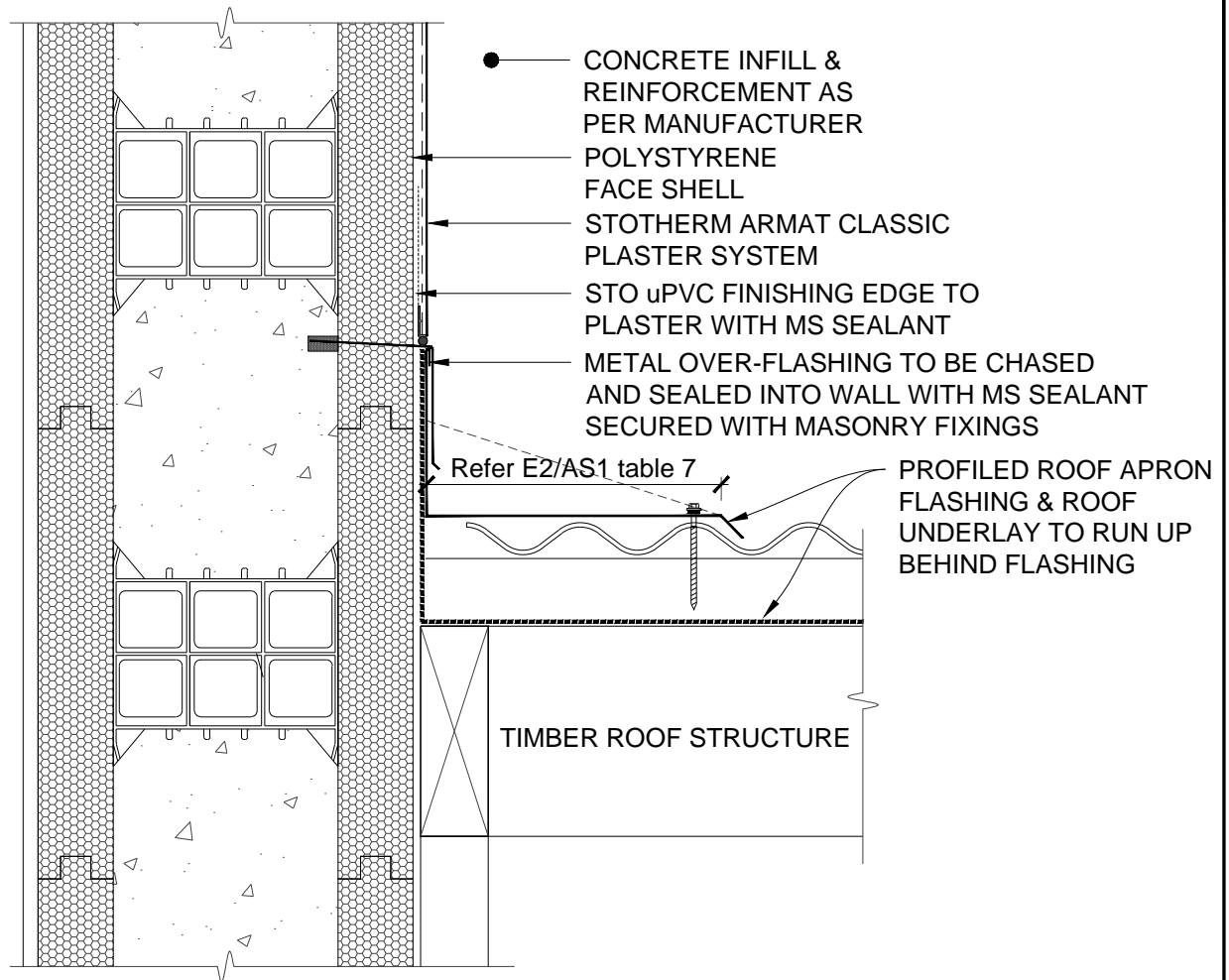
NOTE:

MAX.ANGLE OF SOFFIT RESTRICTED TO BETWEEN 91°-115°

SCALE 1:5

STO EPS-B SYSTEM	STO EPS/ICF BLOCK REVERSE SLOPE EAVES DETAIL	EB 701 2014
-----------------------------	---	------------------------

The information contained in this detail is based on our experience and testing and represents the latest information available at the date of issue. This detail is intended for use by the design professional and users of Sto products to assist in developing specific project details to be used in conjunction with a Sto Specification. We reserve the right to alter or update information at any time without prior notice & it is the responsibility of the specifier and/or the project manager to insure that they have the current Sto details and specifications.



NOTE: INSTALL DIVERTER FLASHING AT ROOF/GUTTER JUNCTION

SCALE 1:5

STO EPS-B SYSTEM	STO EPS/ICF BLOCK GABLE END/ROOF JUNCTION	EB 702
		2014

The information contained in this detail is based on our experience and testing and represents the latest information available at the date of issue. This detail is intended for use by the design professional and users of Sto products to assist in developing specific project details to be used in conjunction with a Sto Specification. We reserve the right to alter or update information at any time without prior notice & it is the responsibility of the specifier and/or the project manager to insure that they have the current Sto details and specifications.