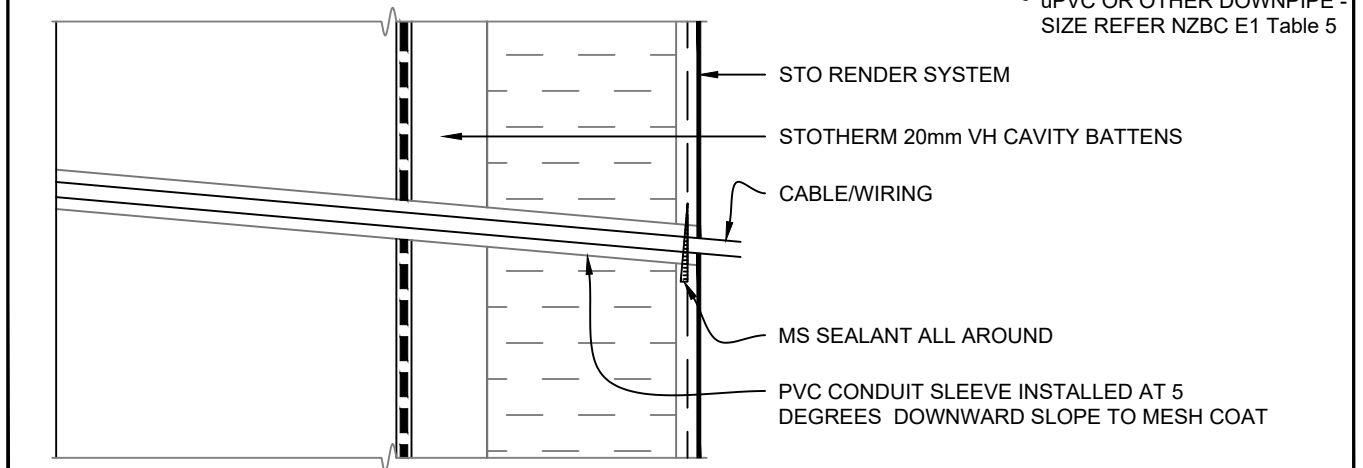


1. DOWNPIPE/CLIP - SADDLE DETAIL



2. WIRING PENETRATION DETAIL

**NOTE:** ENSURE THE AMOUNT OF PENETRATIONS THROUGH THE SYSTEM IS KEPT TO A MINIMUM. THE WEATHERSEALING OF ALL WIRING, ETC AS SHOWN, IS THE RESPONSIBILITY OF THE APPLICABLE TRADE

SCALE 1:2

<b>STOPOREN FACADE</b>	<b>STOPOREN FACADE SYSTEM</b>	<b>PP 356</b>
	<b>DOWNPIPE SADDLE FIXING &amp; WIRING DETAILS</b>	<b>2020</b>