



Building with conscience.

StoColor Dryonic®

Beautifully dry, come what may



Facade Paint



The fog-basking beetle was the inspiration for the new facade paint StoColor Dryonic®. Like the beetle's shell, it has a hydrophilic-hydrophobic microtexture. We used the advantages of this surface to develop the innovative Dryonic® Technology: It allows water on the facade resulting from rain, dew, and fog to run off almost instantly, guaranteeing dry, clean and radiant facades year in, year out.



StoColor Dryonic®

Facade paint with Dryonic® Technology – for naturally dry, clean and radiant facades year in, year out.

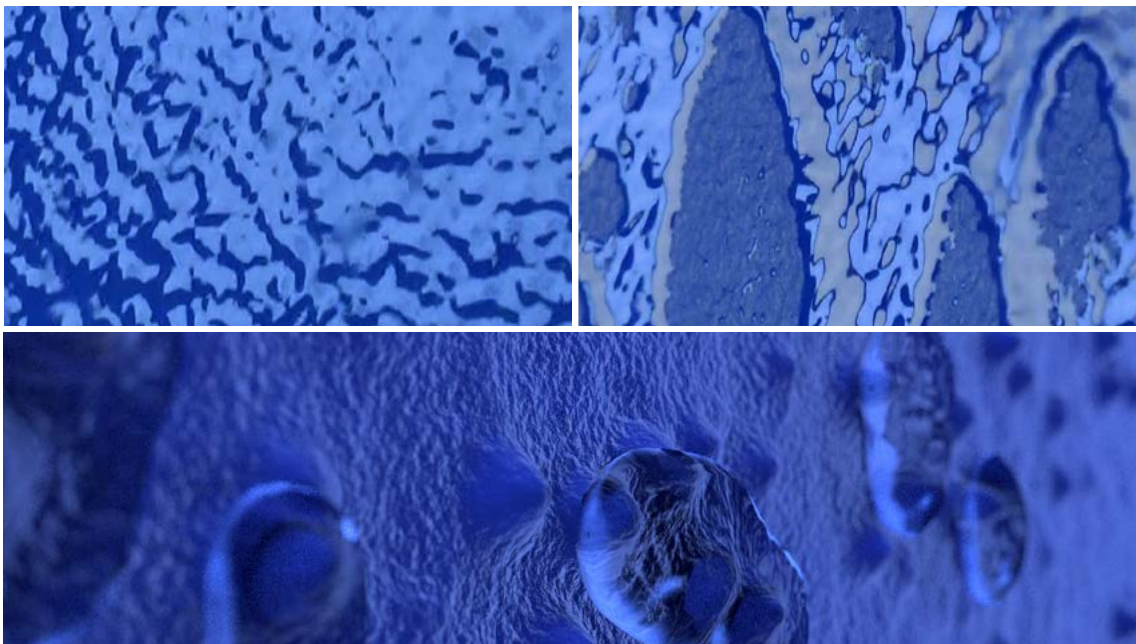
When it comes to facade paint, aesthetic appeal is what counts. However, achieving a successful facade design is not simply about choosing the right colour. Facade paints are constantly exposed to weathering and therefore run the risk of fading or being attacked by unpleasant microorganism, they have to be able to do much more.

This is exactly what we strive for at Sto. In order to offer facade paints with high-levels of performance and innovative properties, we research and develop new technologies. One particularly pioneering field here is biomimetics, which we have been working on for over 20 years: StoColor Dryonic Technology too is based on a biomimetic principle.

StoColor Dryonic®

Our inspiration was the fog-basking beetle. It lives in the Namib desert and has adapted to the conditions that prevail there perfectly. For this beetle, constant drought is no problem, as it can turn fog into drinking water.

So what is its secret? Its shell is covered in countless microscopic bumps. Thanks to this unique surface texture, the beetle is able to turn fog into liquid fast: while the hydrophilic tips let the water condense, the hydrophobic depressions in between divert the water away. We took this observation from nature and transferred it into our top-performing facade paint. Thanks to an innovative formulation, a micro-texture forms on the paint surface and ensures that rain, fog and dew on the facade dry in record time, depriving algae and fungi of the nutrients they need to grow.



StoColor Dryonic® comparison test

Left: Standard facade paint

Right: StoColor Dryonic® excelled. The smallest amount of condensate formed on its surface, it absorbed the least amount of water into its film, and it dried the fastest.

Left: Macro shot of a StoColor Dryonic® surface – the new biomimetic solution from Sto uses the principle of the fog-basking beetle to produce dry facades.

StoColor Dryonic® at a glance

- Can be applied to virtually all conventional construction substrates, render, concrete, brick, metal or wood.
- Biomimetic principle for dry and clean facades to protect against algae and fungal attack.
- High level of colour stability thanks to SunBlock Technology.
- X-black Technology reliably keeps the facade temperature below 70°C.
- Minimal extender material breakdown (not easily scuffed).
- Highly weather resistant.
- Very high mechanical resistance.
- Slight silk gloss visible depending on angle.
- Available in the full StoColor range.
- 12 year re-coat cycle (depending on environmental conditions).



What's behind biomimetics at Sto
www.sto.co.nz/dryonic



Dryonic® Technology – natural protection against algae and fungi.

Whether it's render, concrete, brick, metal or wood facades, Dryonic® Technology ensures that dew or rain water drains off in the shortest possible time so the facade can dry as quickly as possible. The facade remains naturally clean and attractive, as microorganisms cannot grow on dry surfaces.

SunBlock Technology – colour variety and stability.

The integrated SunBlock Technology protects against aggressive UV radiation. This technology ensures that even intense colour shades with sensitive pigments stay vibrant over a long period of time and offers the widest possible range of colours.

X-black Technology – cool facades in dark colours.

X-black Technology ensures that temperature peaks are kept reliably below 70°C. It therefore removes virtually all thermal limits when it comes to the colour design of buildings and reliably prevents facades getting hot or crack formation resulting from high temperatures. Even with dark colour shades.

StoColor Dryonic® guarantee naturally dry, clean and radiant facades on virtually any substrate year in, year out.

For project specification please contact us.



**Residential house,
Dettingen/Teck, DE**
StoTherm Classic,
Stolit K 1.5,
StoColor Dryonic®



Building with conscience.

Head Office

Wellington

Stoanz Ltd
72 Abel Smith Street
Wellington, New Zealand
Phone +64 4 801 7794
Fax +64 4 384 9828

General Enquiries

Phone +64 4 801 7794
Email info@sto.co.nz
Web www.sto.co.nz



Auckland & Northland

309 Rosebank Road, Avondale
Auckland, New Zealand
Phone +64 9 522 1058
Fax +64 9 522 1054

Central North Island

Phone +64 4 801 7794
Mobile +64 27 299 9290

**Christchurch &
Upper South Island**

47A Waterloo Road, Hornby
Christchurch, New Zealand
Phone +64 3 338 3570
Fax +64 3 338 3571

Lower South Island

Phone +64 4 801 7794
Mobile +64 27 304 8650