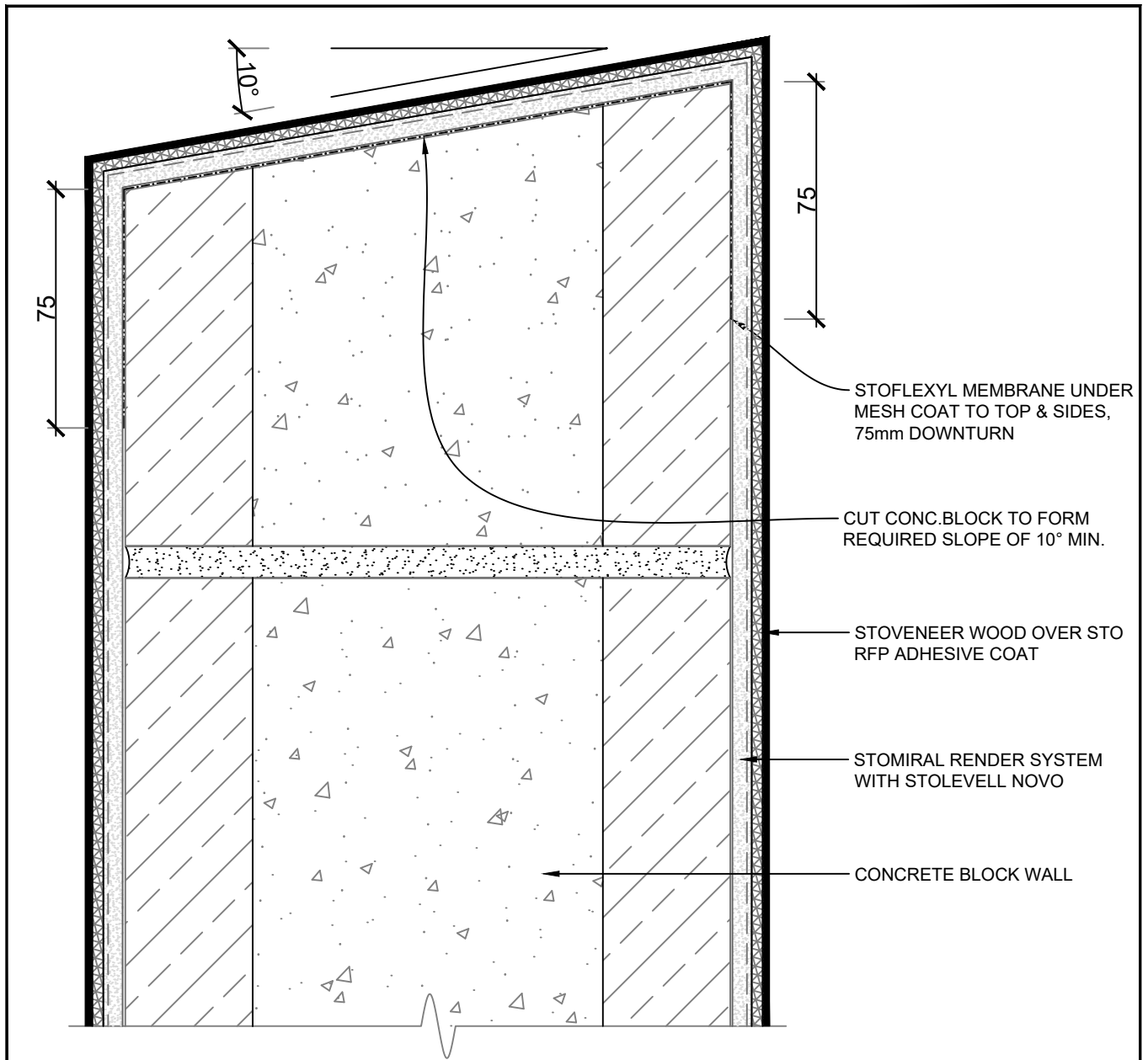


**NOTE:** CUT BLOCK TO SUIT OR BASECOAT PLASTER TO A FALL APPROX. 18mm FROM FRONT EDGE BEFORE INSTALLING PLYWOOD ON DPC. ALTERNATIVELY USE H3.1 TIMBER PLATE, MAINTAINING FLASHING COVER OVER CONC.BLOCK OF 50mm MIN.

SCALE 1:2

<b>STO/CONCRETE BLOCK</b>	<b>STOVENEER WOOD SYSTEM</b>	<b>VWCB 500</b>
	<b>PARAPET WITH METAL FLASHING DETAIL</b>	<b>2020</b>

The information contained on this page is based on our experience and research at the date of issue. The detail is for use by Registered Architects, Licensed Designers or Chartered Engineers to assist in developing project details using Sto Systems. Stoanz Ltd reserve the right to alter or update information at any time without prior notice and it is the responsibility of the designer, project manager or Sto contractor to insure they have and use the current Sto details and specifications on site.

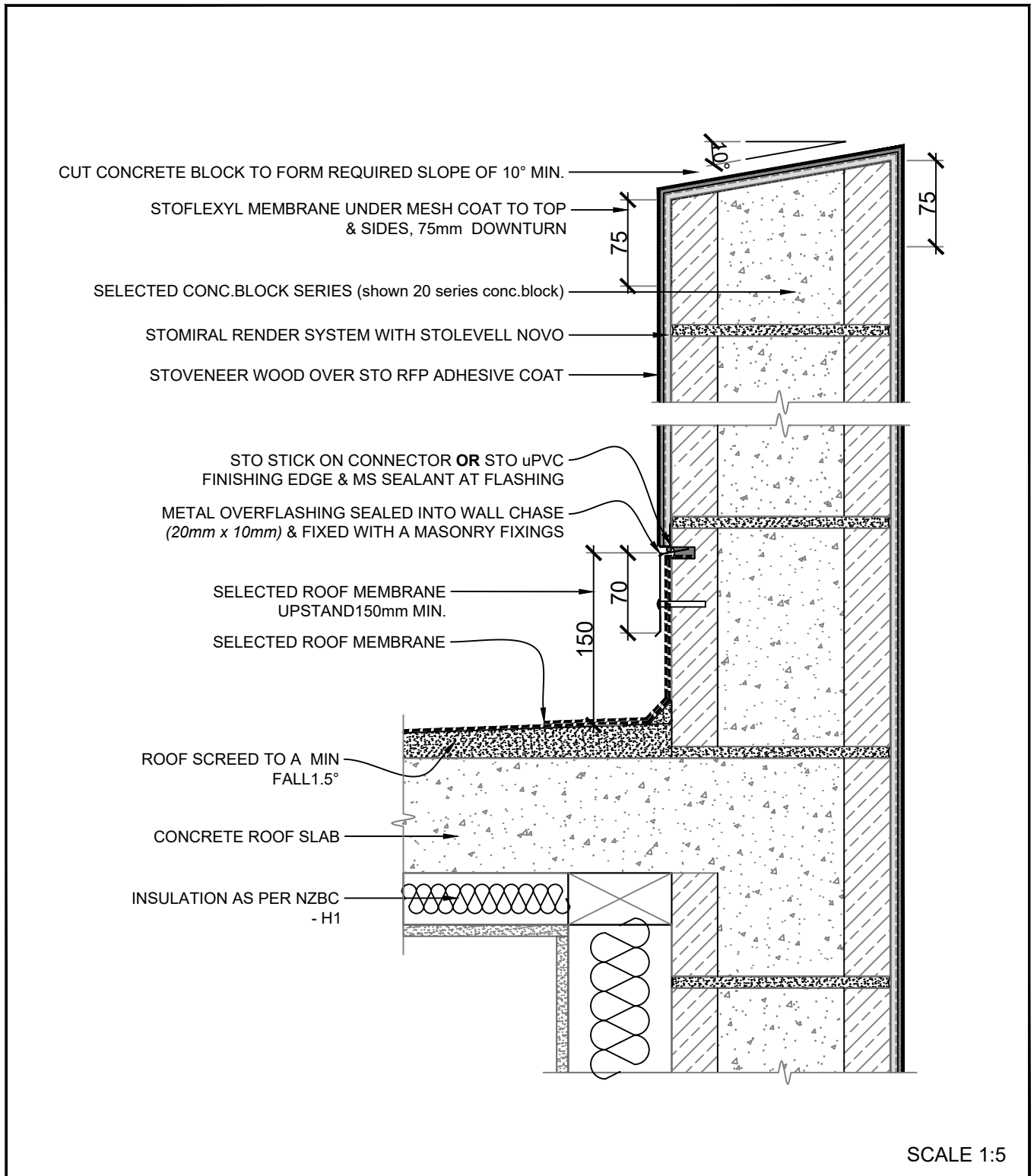


**NOTE:**  
 CUT BLOCKS TO SUIT or BASECOAT PLASTER TO A FALL 10° MIN.

SCALE 1:2

<b>STO/CONCRETE BLOCK</b>	<b>STOVENEER WOOD SYSTEM</b>	<b>VWCB 501</b>
	<b>RENDERED PARAPET/ BALUSTRADE DETAIL</b>	<b>2020</b>

The information contained on this page is based on our experience and research at the date of issue. The detail is for use by Registered Architects, Licensed Designers or Chartered Engineers to assist in developing project details using Sto Systems. Stoanz Ltd reserve the right to alter or update information at any time without prior notice and it is the responsibility of the designer, project manager or Sto contractor to insure they have and use the current Sto details and specifications on site.



<b>STO/CONCRETE BLOCK</b>	<b>STOVENEER WOOD SYSTEM</b>	<b>VWCB 502</b>
	<b>PARAPET/ROOF/WALL DETAIL</b>	<b>2020</b>

The information contained on this page is based on our experience and research at the date of issue. The detail is for use by Registered Architects, Licensed Designers or Chartered Engineers to assist in developing project details using Sto Systems. Stoanz Ltd reserve the right to alter or update information at any time without prior notice and it is the responsibility of the designer, project manager or Sto contractor to insure they have and use the current Sto details and specifications on site.