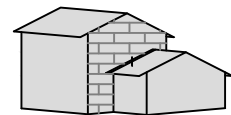


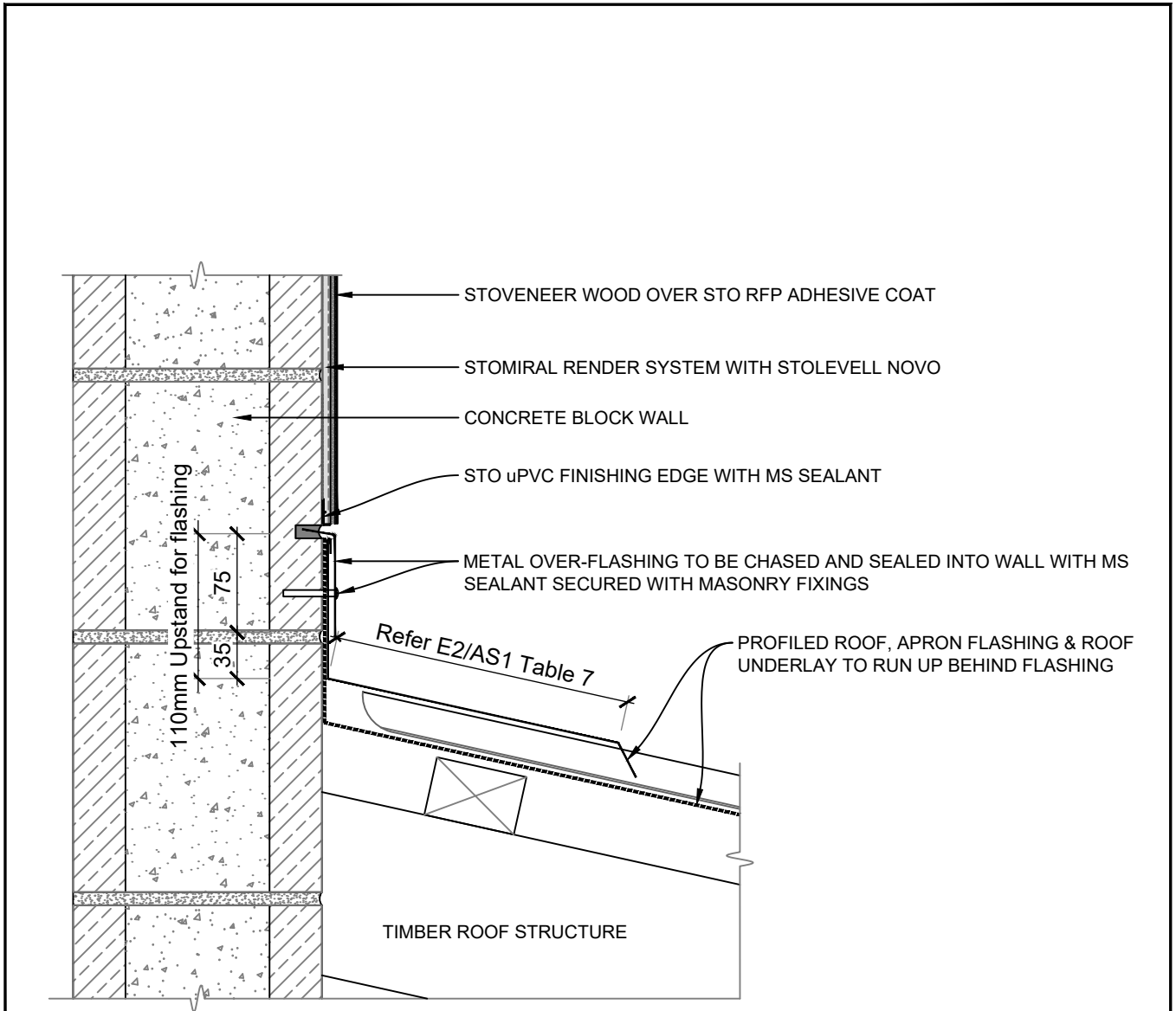
**NOTE:**  
INSTALL DIVERTER FLASHING AT ROOF/GUTTER JUNCTION



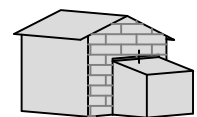
SCALE 1:5

<b>STO/CONCRETE BLOCK</b>	<b>STOVENEER WOOD SYSTEM</b>	<b>VWCB 700</b>
	<b>GABLE END/ROOF JUNCTION</b>	<b>2020</b>

The information contained in this detail is based on our experience and testing and represents the latest information available at the date of issue. This detail is intended for use by the design professional and users of Sto products to assist in developing specific project details to be used in conjunction with a Sto Specification. We reserve the right to alter or update information at any time without prior notice & it is the responsibility of the specifier and/or the project manager to insure that they have the current Sto details and specifications.



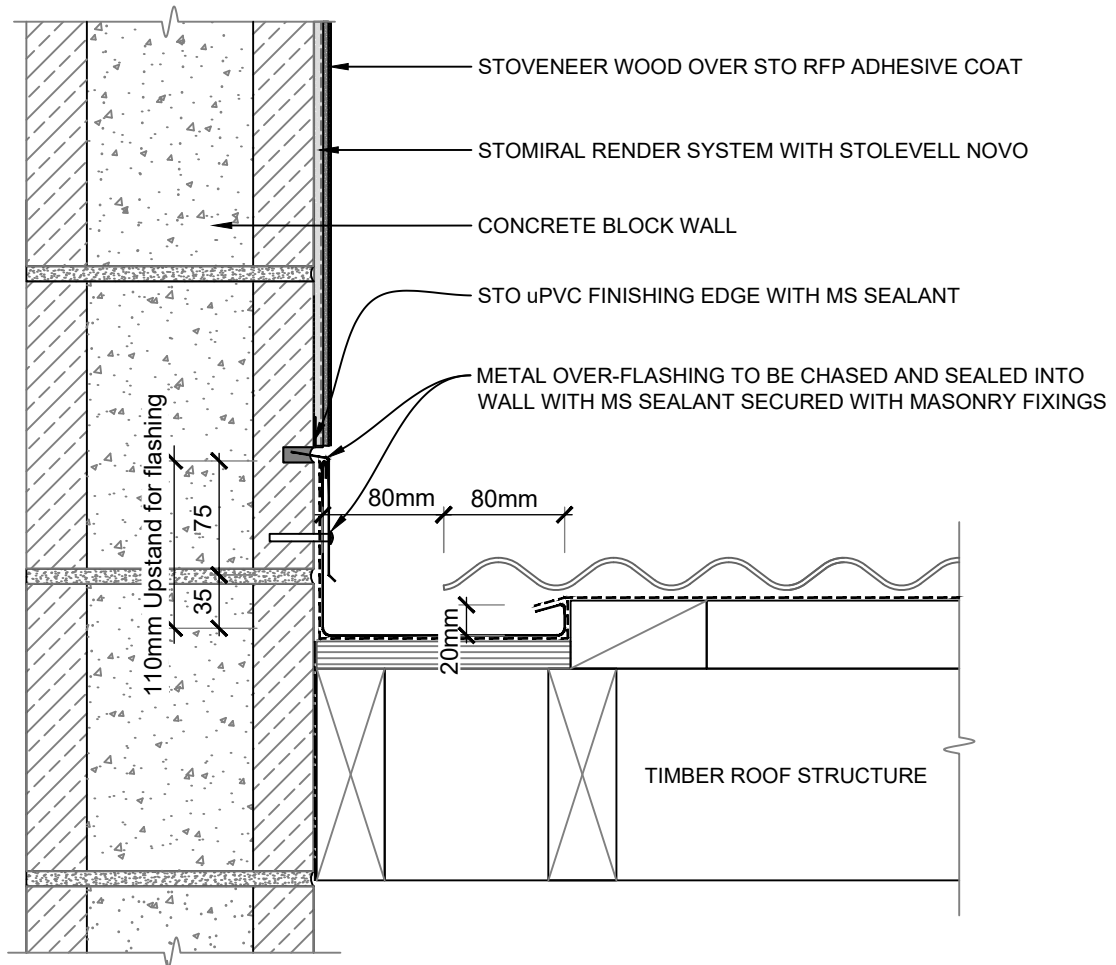
**NOTE:**  
ENSURE APRON FLASHING IS OVER FLASHED AT BOTH ENDS



SCALE 1:5

<b>STO/CONCRETE BLOCK</b>	<b>STOVENEER WOOD SYSTEM</b>	<b>VWCB 701</b>
	<b>APRON FLASHING</b>	<b>2020</b>

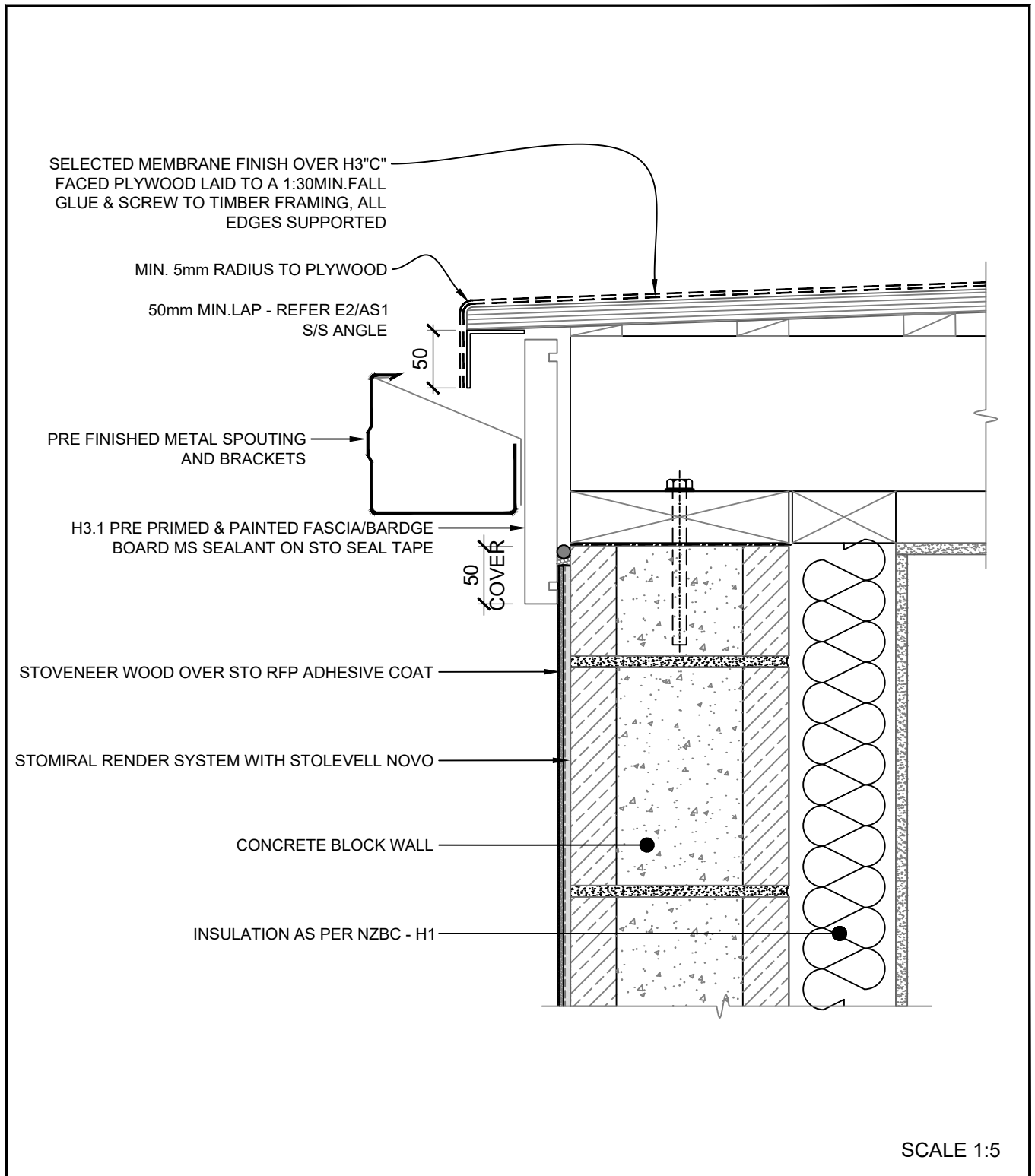
The information contained in this detail is based on our experience and testing and represents the latest information available at the date of issue. This detail is intended for use by the design professional and users of Sto products to assist in developing specific project details to be used in conjunction with a Sto Specification. We reserve the right to alter or update information at any time without prior notice & it is the responsibility of the specifier and/or the project manager to insure that they have the current Sto details and specifications.



SCALE 1:5

<b>STO/CONCRETE BLOCK</b>	<b>STOVENEER WOOD SYSTEM</b>	<b>VWCB 702</b>
	<b>PARALLEL ROOF/HIDDEN GUTTER</b>	<b>2020</b>

The information contained in this detail is based on our experience and testing and represents the latest information available at the date of issue. This detail is intended for use by the design professional and users of Sto products to assist in developing specific project details to be used in conjunction with a Sto Specification. We reserve the right to alter or update information at any time without prior notice & it is the responsibility of the specifier and/or the project manager to insure that they have the current Sto details and specifications.



STO/CONCRETE BLOCK	STOVENEER WOOD SYSTEM FACE FIXED FASCIA/MEMBRANE ROOF	VWCB 703
		2020

The information contained in this detail is based on our experience and testing and represents the latest information available at the date of issue. This detail is intended for use by the design professional and users of Sto products to assist in developing specific project details to be used in conjunction with a Sto Specification. We reserve the right to alter or update information at any time without prior notice & it is the responsibility of the specifier and/or the project manager to insure that they have the current Sto details and specifications.