

STO DRAWING REGISTER

Drawing Description	Drawing No.
Drawing Register	VWFC 001 - 002
Introduction Series 000	
StoVeneer Wood System Introduction	VWFC 003
StoVeneer Wood System Sheet Layout	VWFC 004
Panel Layout Series 100	
StoVeneer Wood System Monotek Sheet - Isometric	VWFC 100
Foundation Series 200	
StoVeneer Wood System Foundation Slab-on-ground	VWFC 200
StoVeneer Wood System Rebated Slab-on-Ground	VWFC 201
StoVeneer Wood System Concrete Foundation/ Timber Floor	VWFC 202
StoVeneer Wood System Conc. Block Foundation Edge Detail	VWFC 203
Walls Series 300	
StoVeneer Wood System External Corner	VWFC 300
StoVeneer Wood System Internal Corner	VWFC 301
StoVeneer Wood System Vertical Control Joint	VWFC 302
StoVeneer Wood System Horizontal Junction - Non Draining	VWFC 303
Wall Penetrations & Fittings Series 350	
StoVeneer Wood System Pipe Penetration Detail	VWFC 350
StoVeneer Wood System Light Fitting/ Fixing Detail	VWFC 351
StoVeneer Wood System Tap Fitting/ Fixing Detail	VWFC 352
StoVeneer Wood System Handrail Bracket/ Fixing Detail	VWFC 353
StoVeneer Wood System Meterbox - Cross Section	VWFC 354
StoVeneer Wood System Downpipe Saddle Fixing & Wiring Detail	VWFC 355
StoVeneer Wood System Fan Vent Detail	VWFC 356

THESE DETAILS ARE ISSUED AS A GUIDE USING STANDARD BUILDING PRACTICES BASED ON THE NZBC. VARIOUS BUILDING COMPONENTS ARE DETAILED AND IT IS THE RESPONSIBILITY OF EACH TRADE INVOLVED TO ENSURE THAT THEIR PARTICULAR ELEMENTS ARE INSTALLED CORRECTLY. NOTE: REFER TO INDIVIDUAL MANUFACTURERS FOR CURRENT DETAILS AND SPECIFICATIONS - SEE www.sto.co.nz FOR CURRENT DETAILS. RBW DETAILS MUST BE ISSUED BY A; REGISTERED ARCHITECT, LICENSED DESIGNER OR CHARTERED ENGINEER

PAGE 1 OF 2

STO/ MONOTEK	STOVENEER WOOD SYSTEM	VWFC 001
	DRAWING REGISTER	2021

The information contained on this page is based on our experience and research at the date of issue. The detail is for use by Registered Architects, Licensed Designers or Chartered Engineers to assist in developing project details using Sto Systems. Stoanz Ltd reserve the right to alter or update information at any time without prior notice and it is the responsibility of the designer, project manager or Sto contractor to insure they have and use the current Sto details and specifications on site.

STO DRAWING REGISTER

Drawing Description

Drawing No.

Joinery Series 400

StoVeneer Wood System Alu.Joinery - Head Detail	VWFC 400
StoVeneer Wood System Alu.Joinery - Sill Detail	VWFC 401
StoVeneer Wood System Alu.Joinery - Jamb Detail	VWFC 402
StoVeneer Wood System Int.Cnr Alu.Window/Door Joinery - Jamb Detail	VWFC 403
StoVeneer Wood System Entry Door - Head Detail	VWFC 404
StoVeneer Wood System Entry Door - Threshold Detail	VWFC 405
StoVeneer Wood System Entry Door - Jamb Detail	VWFC 406
StoVeneer Wood System Sliding Door - Head Detail	VWFC 407
StoVeneer Wood System Sliding Door - Threshold Detail - Concrete Floor	VWFC 408
StoVeneer Wood System Slide Door - Threshold Detail - Timber Floor	VWFC 409
StoVeneer Wood System Sliding Door- Jamb Detail	VWFC 410
StoVeneer Wood System BiFold Door - Head Detail	VWFC 411
StoVeneer Wood System BiFold Door - Threshold Detail - Concrete Floor	VWFC 412
StoVeneer Wood System BiFold Door - Threshold Detail - Timber Floor	VWFC 413
StoVeneer Wood System BiFold Door - Jamb Detail	VWFC 414
StoVeneer Wood System Level Entry - Threshold Detail	VWFC 415
StoVeneer Wood System Garage Door - Timber Head	VWFC 416

Parapets, Balustrades, Decks Series 500

StoVeneer Wood System Parapet/ Metal Flashing Detail	VWFC 500
StoVeneer Wood System Parapet/ Balustrade Rendered Detail	VWFC 501
StoVeneer Wood System Balustrade/ Enclosed Deck Detail	VWFC 502
StoVeneer Wood System Cantilevered Slatted Deck Detail	VWFC 503
StoVeneer Wood System Timber Beam/ Pergola Detail	VWFC 504
StoVeneer Wood System RWH/ Scupper Opening	VWFC 505

Soffit Series 600

StoVeneer Wood System Flat Soffit/ Wall Junction	VWFC 600
StoVeneer Wood System Face Fixed Fascia	VWFC 601
StoVeneer Wood System Raking Soffit (Reversed)	VWFC 602

Roof Series 700

StoVeneer Wood System Apron (Transverse) Flashing	VWFC 700
StoVeneer Wood System Parallel Apron Flashing	VWFC 701
StoVeneer Wood System Roof Penetration Gutter Masonry Tile Detail	VWFC 702
StoVeneer Wood System Parallel Roof/ Hidden Gutter	VWFC 703
StoVeneer Wood System Face Fixed Fascia/ Membrane Roof	VWFC 704
StoVeneer Wood System Framed Chimney or Penetration up to 1200mm	VWFC 705

THESE DETAILS ARE ISSUED AS A GUIDE USING STANDARD BUILDING PRACTICES BASED ON THE NZBC. VARIOUS BUILDING COMPONENTS ARE DETAILED AND IT IS THE RESPONSIBILITY OF EACH TRADE INVOLVED TO ENSURE THAT THEIR PARTICULAR ELEMENTS ARE INSTALLED CORRECTLY. NOTE: REFER TO INDIVIDUAL MANUFACTURERS FOR CURRENT DETAILS AND SPECIFICATIONS - SEE www.sto.co.nz FOR CURRENT DETAILS. RBW DETAILS MUST BE ISSUED BY A; REGISTERED ARCHITECT, LICENSED DESIGNER OR CHARTERED ENGINEER

PAGE 2 OF 2

STO/ MONOTEK	STOVENEER WOOD SYSTEM DRAWING REGISTER	VWFC 002 2021
-------------------------	--	-------------------------------

The information contained on this page is based on our experience and research at the date of issue. The detail is for use by Registered Architects, Licensed Designers or Chartered Engineers to assist in developing project details using Sto Systems. Stoanz Ltd reserve the right to alter or update information at any time without prior notice and it is the responsibility of the designer, project manager or Sto contractor to insure they have and use the current Sto details and specifications on site.

STO VENEER WOOD SYSTEM

STO VENEER WOOD SYSTEM

1. STO PUTZGRUND PRIMER TO FACE OF SHEETS
2. STOARMAT MESHED JOINTING OF SHEET JOINTS
3. STO RFP MESHED ADHESIVE COAT COMPLETELY OVER CLADDING
4. STO VENEER WOOD STRIPS
5. STOCOLOR : STOAQUA SATIN 15lt PAIL
: STOCOLOR MAXICRYL FACADE PAINT 15lt PAIL

STO/ MONOTEK	STO VENEER WOOD SYSTEM INTRODUCTION	VWFC 003
		2021

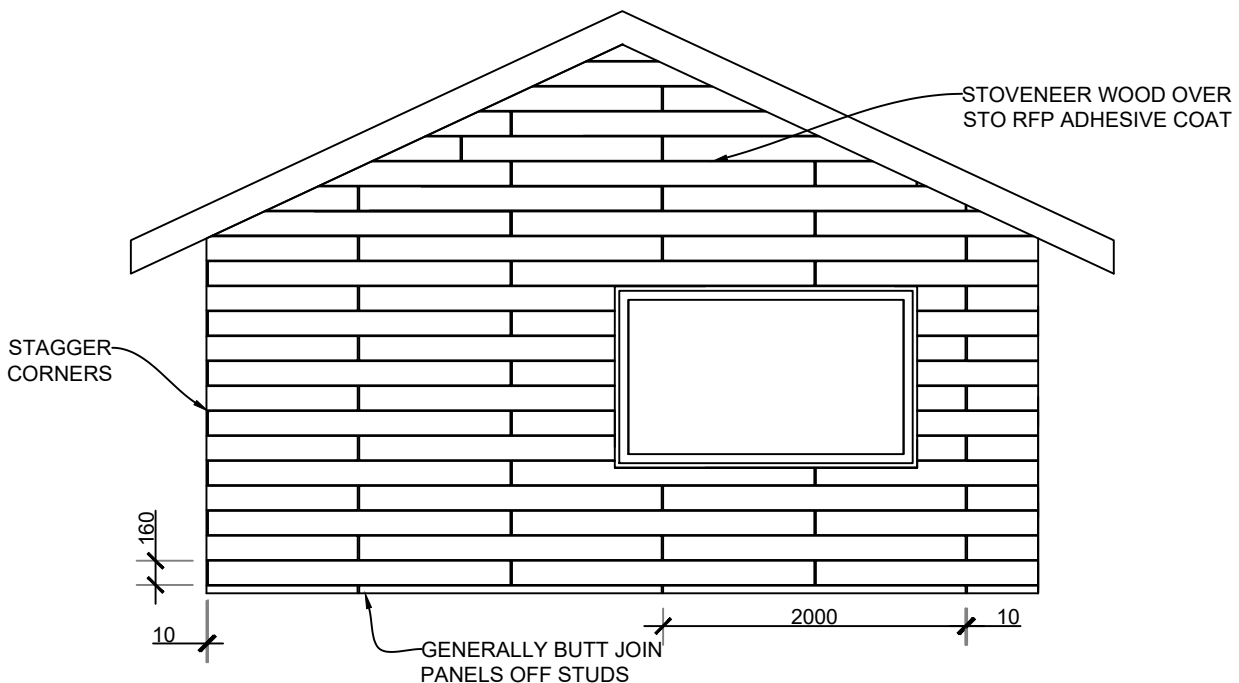
The information contained on this page is based on our experience and research at the date of issue. The detail is for use by Registered Architects, Licensed Designers or Chartered Engineers to assist in developing project details using Sto Systems. Stoanz Ltd reserve the right to alter or update information at any time without prior notice and it is the responsibility of the designer, project manager or Sto contractor to insure they have and use the current Sto details and specifications on site.

STOVENEER WOOD INSTALLATION

1. LEAVE PANELS IN PLASTIC WRAP AND COVER TO KEEP DRY BEFORE USING.
2. READ SPECIFICATIONS AND CHECK DRAWINGS, DETAILS, FRAMING, UNDERLAY, FLASHING TAPES, AND BLOCKING IS SATISFACTORY.
3. INSTALL STO PVC FOOT TRAY AND JOINERY FLASHINGS AS PER STO DETAILS (BUILDER TO SUPPLY ALUMINUM HEAD FLASHINGS)
4. CHECK PANEL LAYOUT AND INSTALL PANEL HORIZONTALLY STARTING FROM TOP TO BOTTOM
5. APPLY STO-RFP HORIZONTALLY WITH THE STO-FINISHING TROWEL NOTCHED 6 X 6mm.
6. DO NOT ALLOW STO-RFP TO DRY TOO LONG THAT A SKIN FORMS.
7. REMOVE THE RFP FROM AREAS THAT ARE NOT BEING WORKED ON YET.
8. PLACE THE FACADE PANEL APPROX. 5-10mm FROM THE JOINT.
9. PRESS AND GENTLY SLIDE THE PANEL FULL FACED INTO THE FRESHLY APPLIED RFP AND SLIDE AGAINST THE ADJACENT PANEL.
10. PRESS THE PANEL WITH THE RUBBER ROLLER SO THAT STO-RFP FLOWS OUT AT THE SIDES OF THE JOINTS.
11. THERE SHALL BE NO GAPS OR CAVITIES.
12. ALLOW EXCESS STO-RFP TO BRIEFLY HARDEN AND REMOVE WITH A SPATULA.
13. WIPE OFF ANY REMAINING STO-RFP WITH A MOIST SPONGE.
14. ALLOW THE RFP TO DRY SUFFICIENTLY AND APPLY STO-AQUA TOP SATIN WITH THE STO-WIDE BRUSH M³ TO THE STOVENEER WOOD PANELS.
15. LEAVE TO DRY THEN APPLY A SECOND PAINT COAT.

SAFE WORKING PRACTICE

1. WEAR PROTECTIVE CLOTHING, EYE AND EAR PROTECTION AND DUST MASK OR RESPIRATOR WHEN CUTTING OR SANDING.
2. EASY TO CUT USING A UTILITY KNIFE
3. PROVIDE SUITABLE ACCESS PLATFORMS, EQUIPMENT AND TOOLS TO CARRY OUT THE WORK.
4. MAINTAIN HEALTH AND SAFETY REGULATIONS AND FIRST AID EQUIPMENT IN ACCORDANCE WITH LEGISLATION.



SCALE 1:50

STO/ MONOTEK	STOVENEER WOOD SYSTEM	VWFC 004
	SHEET LAYOUT	2021

The information contained on this page is based on our experience and research at the date of issue. The detail is for use by Registered Architects, Licensed Designers or Chartered Engineers to assist in developing project details using Sto Systems. Stoanz Ltd reserve the right to alter or update information at any time without prior notice and it is the responsibility of the designer, project manager or Sto contractor to insure they have and use the current Sto details and specifications on site.