

STO DRAWING REGISTER

Drawing Description	Drawing No.
Drawing Register	VWPP 001 - 002
Introduction Series 000	
StoVeneer Wood System Introduction	VWPP 003
StoVeneer Wood System Sheet Layout	VWPP 004
Panel Layout Series 100	
StoVeneer Wood System StoPoren Panel - Isometric	VWPP 100
Foundation Series 200	
StoVeneer Wood System Foundation Slab-on-ground	VWPP 200
StoVeneer Wood System Insulated Slab-on-Ground	VWPP 201
StoVeneer Wood System Rebated Slab-on-Ground	VWPP 202
StoVeneer Wood System ESP Block Foundation Detail	VWPP 203
StoVeneer Wood System Conc.Block Foundation Edge Detail	VWPP 204
StoVeneer Wood System Solid Conc.Foundation Edge Detail	VWPP 205
StoVeneer Wood System Conc.Continuous Perimeter Found.Wall	VWPP 206
StoVeneer Wood System Masonry Conc.Block in-ground Wall	VWPP 207
StoVeneer Wood System Concrete Block Inter-Storey Drained Junction	VWPP 208
StoVeneer Wood System Ribraft Floor System / Edge Detail	VWPP 209
Walls Series 300	
StoVeneer Wood System Cross Section	VWPP 300
StoVeneer Wood System External Corner	VWPP 301
StoVeneer Wood System Internal Corner	VWPP 302
StoVeneer Wood System Vertical Control Joint	VWPP 303
StoVeneer Wood System Boxed Beam	VWPP 304
StoVeneer Wood System Horizontal Inter-storey - on dry joist	VWPP 305
StoVeneer Wood System Horizontal inter-storey Control Joint	VWPP 306
StoVeneer Wood System Drained Joint at Third Storey	VWPP 307
StoVeneer Wood System Post Detail	VWPP 308
Wall Penetrations & Fittings Series 350	
StoVeneer Wood System Pipe Penetration Detail	VWPP 350
StoVeneer Wood System Handrail Bracket/Fixing Detail	VWPP 351
StoVeneer Wood System Meterbox - Cross Section	VWPP 352
StoVeneer Wood System Fan Vent Detail	VWPP 353
StoVeneer Wood System Joint at Third Storey with Poly profile	VWPP 354

THESE DETAILS ARE ISSUED AS A GUIDE USING STANDARD BUILDING PRACTICES BASED ON THE NZBC. VARIOUS BUILDING COMPONENTS ARE DETAILED AND IT IS THE RESPONSIBILITY OF EACH TRADE INVOLVED TO ENSURE THAT THEIR PARTICULAR ELEMENTS ARE INSTALLED CORRECTLY. NOTE: REFER TO INDIVIDUAL MANUFACTURERS FOR CURRENT DETAILS AND SPECIFICATIONS - SEE www.sto.co.nz FOR CURRENT DETAILS. RBW DETAILS MUST BE ISSUED BY A; REGISTERED ARCHITECT, LICENSED DESIGNER OR CHARTERED ENGINEER

PAGE 1 OF 6

STO POREN PANEL	STOVENEER WOOD SYSTEM DRAWING REGISTER	VWPP 001
		2020

The information contained in this detail is based on our experience and testing and represents the latest information available at the date of issue. This detail is intended for use by the design professional and users of Sto products to assist in developing specific project details to be used in conjunction with a Sto Specification. We reserve the right to alter or update information at any time without prior notice & it is the responsibility of the specifier and/or the project manager to insure that they have the current Sto details and specifications.

STO DRAWING REGISTER

Drawing Description

Drawing No.

Joinery Series 400

StoVeneer Wood System Alu.Joinery - Head Detail	VWPP 400
StoVeneer Wood System Alu.Joinery - Sill Detail	VWPP 401
StoVeneer Wood System Alu.Joinery - Jamb Detail	VWPP 402
StoVeneer Wood System Int.Cnr Alu.Window/Door Joinery - Jamb Detail	VWPP 403
StoVeneer Wood System Entry Door - Head Detail	VWPP 404
StoVeneer Wood System Entry Door - Threshold Detail	VWPP 405
StoVeneer Wood System Entry Door - Jamb Detail	VWPP 406
StoVeneer Wood System Sliding Door - Head Detail	VWPP 407
StoVeneer Wood System Sliding Door - Threshold Detail - Concrete Floor	VWPP 408
StoVeneer Wood System Garage Door - Timber Head Detail	VWPP 409
StoVeneer Wood System Sliding Door- Jamb Detail	VWPP 410
StoVeneer Wood System BiFold Door - Head Detail	VWPP 411
StoVeneer Wood System BiFold Door - Threshold Detail - Concrete Floor	VWPP 412
StoVeneer Wood System BiFold Door - Threshold Detail - Timber Floor	VWPP 413
StoVeneer Wood System BiFold Door - Jamb Detail	VWPP 414
StoVeneer Wood System Level Entry - Threshold Detail	VWPP 415

Parapets, Balustrades, Decks Series 500

StoVeneer Wood System Parapet/Metal Flashing Detail	VWPP 500
StoVeneer Wood System Parapet and/or Encl.Balustrade Wall Junction - Plan View	VWPP 501
StoVeneer Wood System Balustrade/Encl.Deck Detail	VWPP 502
StoVeneer Wood System Cantilevered Slatted Deck Detail	VWPP 503
StoVeneer Wood System Non Cantilevered Slatted Deck	VWPP 504
StoVeneer Wood System RWH/Scupper Opening	VWPP 505

Soffit Series 600

StoVeneer Wood System Flat Soffit/Wall Junction	VWPP 600
StoVeneer Wood System Face Fixed Fascia	VWPP 601
StoVeneer Wood System Raking Soffit	VWPP 602
StoVeneer Wood System Barge With Overhang	VWPP 603

Roof Series 700

StoVeneer Wood System Apron Flashing	VWPP 700
StoVeneer Wood System Parallel Apron Flashing	VWPP 701
StoVeneer Wood System Interstorey Deck or Roof Stop End Flashing	VWPP 702
StoVeneer Wood System Roof Penetration Gutter Masonry Tile Detail	VWPP 703

THESE DETAILS ARE ISSUED AS A GUIDE USING STANDARD BUILDING PRACTICES BASED ON THE NZBC. VARIOUS BUILDING COMPONENTS ARE DETAILED AND IT IS THE RESPONSIBILITY OF EACH TRADE INVOLVED TO ENSURE THAT THEIR PARTICULAR ELEMENTS ARE INSTALLED CORRECTLY. NOTE: REFER TO INDIVIDUAL MANUFACTURERS FOR CURRENT DETAILS AND SPECIFICATIONS - SEE www.sto.co.nz FOR CURRENT DETAILS. RBW DETAILS MUST BE ISSUED BY A; REGISTERED ARCHITECT, LICENSED DESIGNER OR CHARTERED ENGINEER

PAGE 2 OF 6

STO POREN PANEL	STOVENEER WOOD SYSTEM DRAWING REGISTER	VWPP 002
		2020

The information contained in this detail is based on our experience and testing and represents the latest information available at the date of issue. This detail is intended for use by the design professional and users of Sto products to assist in developing specific project details to be used in conjunction with a Sto Specification. We reserve the right to alter or update information at any time without prior notice & it is the responsibility of the specifier and/or the project manager to insure that they have the current Sto details and specifications.

STO VENEER WOOD SYSTEM

STO VENEER WOOD SYSTEM

1. STO POREN PANEL
2. STO MIRAL RENDER SYSTEM
3. STO RFP MESHED ADHESIVE COAT COMPLETELY OVER STO POREN PANEL
4. STO VENEER WOOD STRIPS
5. STOCOLOR : STOAQUA SATIN 15lt PAIL
: STOCOLOR MAXICRYL FACADE PAINT 15lt PAIL

STO POREN PANEL	STOVENEER WOOD SYSTEM INTRODUCTION	VWPP 003
		2020

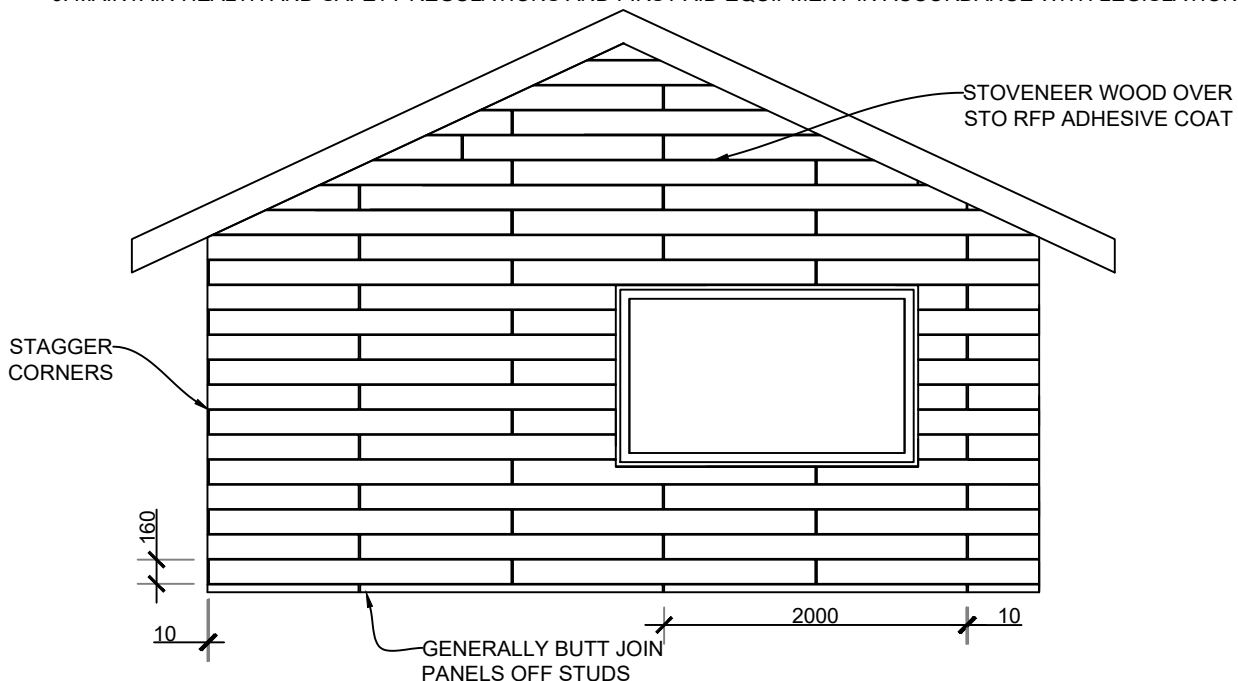
The information contained on this page is based on our experience and research at the date of issue. The detail is for use by Registered Architects, Licensed Designers or Chartered Engineers to assist in developing project details using Sto Systems. Stoanz Ltd reserve the right to alter or update information at any time without prior notice and it is the responsibility of the designer, project manager or Sto contractor to insure they have and use the current Sto details and specifications on site.

STOVENEER WOOD INSTALLATION

1. LEAVE FACADE PANELS IN PLASTIC WRAP AND COVER TO KEEP DRY BEFORE USING.
2. READ SPECIFICATIONS AND CHECK DRAWINGS, DETAILS, FRAMING, UNDERLAY, FLASHING TAPES, AND BLOCKING IS SATISFACTORY.
3. INSTALL STO PVC FOOT TRAY AND JOINERY FLASHINGS AS PER STO DETAILS (BUILDER TO SUPPLY ALUMINUM HEAD FLASHINGS)
4. CHECK PANEL LAYOUT AND INSTALL PANEL HORIZONTALLY STARTING FROM TOP TO BOTTOM
5. APPLY STO-RFP HORIZONTALLY WITH THE STO-FINISHING TROWEL NOTCHED 6 X 6mm.
6. DO NOT ALLOW STO-RFP TO DRY TOO LONG THAT A SKIN FORMS.
7. REMOVE THE RFP FROM AREAS THAT ARE NOT BEING WORKED ON YET.
8. PLACE THE FACADE PANEL APPROX. 5-10mm FROM THE JOINT.
9. PRESS AND GENTLY SLIDE THE PANEL FULL FACED INTO THE FRESHLY APPLIED RFP AND SLIDE AGAINST THE ADJACENT PANEL.
10. PRESS THE PANEL WITH THE RUBBER ROLLER SO THAT STO-RFP FLOWS OUT AT THE SIDES OF THE JOINTS.
11. THERE SHALL BE NO GAPS OR CAVITIES.
12. ALLOW EXCESS STO-RFP TO BRIEFLY HARDEN AND REMOVE WITH A SPATULA.
13. WIPE OFF ANY REMAINING STO-RFP WITH A MOIST SPONGE.
14. ALLOW THE RFP TO DRY SUFFICIENTLY AND APPLY STO-AQUA TOP SATIN WITH THE STO-WIDE BRUSH M³ TO THE STOVENEER WOOD PANELS.
15. LEAVE TO DRY THEN APPLY A SECOND PAINT COAT.

SAFE WORKING PRACTICE

1. HAVE SUFFICIENT PEOPLE TO LIFT OR POSITION PANEL ON SITE (MINIMUM TWO MAN LIFT)
2. WEAR PROTECTIVE CLOTHING, EYE AND EAR PROTECTION AND DUST MASK OR RESPIRATOR WHEN CUTTING OR SANDING.
3. USE A CIRCULAR SAW FITTED WITH A DIAMOND BLADE AND HEPA VACUUM WHEN CUTTING PANEL.
4. CONTAIN CUTTING AREA TO MINIMIZE DUST AND WARN OTHER IN IMMEDIATE VICINITY- HEPA VACUUM UP RESIDUE.
5. PROVIDE SUITABLE ACCESS PLATFORMS, EQUIPMENT AND TOOLS TO CARRY OUT THE WORK.
6. MAINTAIN HEALTH AND SAFETY REGULATIONS AND FIRST AID EQUIPMENT IN ACCORDANCE WITH LEGISLATION.



SCALE 1:50

STO POREN PANEL	STOVENEER WOOD SYSTEM	VWPP 004
	SHEET LAYOUT	2020

The information contained on this page is based on our experience and research at the date of issue. The detail is for use by Registered Architects, Licensed Designers or Chartered Engineers to assist in developing project details using Sto Systems. Stoanz Ltd reserve the right to alter or update information at any time without prior notice and it is the responsibility of the designer, project manager or Sto contractor to insure they have and use the current Sto details and specifications on site.