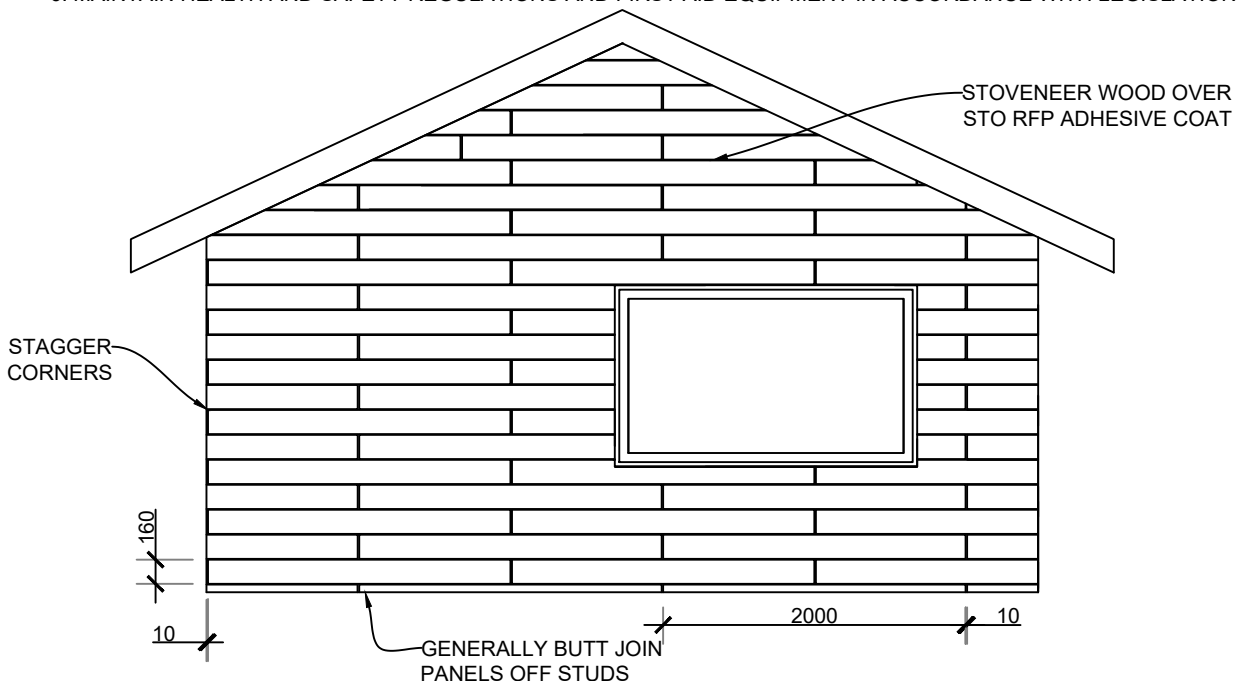


STOVENEER WOOD INSTALLATION

1. LEAVE FACADE PANELS IN PLASTIC WRAP AND COVER TO KEEP DRY BEFORE USING.
2. READ SPECIFICATIONS AND CHECK DRAWINGS, DETAILS, FRAMING, UNDERLAY, FLASHING TAPES, AND BLOCKING IS SATISFACTORY.
3. INSTALL STO PVC FOOT TRAY AND JOINERY FLASHINGS AS PER STO DETAILS (BUILDER TO SUPPLY ALUMINUM HEAD FLASHINGS)
4. CHECK PANEL LAYOUT AND INSTALL PANEL HORIZONTALLY STARTING FROM TOP TO BOTTOM
5. APPLY STO-RFP HORIZONTALLY WITH THE STO-FINISHING TROWEL NOTCHED 6 X 6mm.
6. DO NOT ALLOW STO-RFP TO DRY TOO LONG THAT A SKIN FORMS.
7. REMOVE THE RFP FROM AREAS THAT ARE NOT BEING WORKED ON YET.
8. PLACE THE FACADE PANEL APPROX. 5-10mm FROM THE JOINT.
9. PRESS AND GENTLY SLIDE THE PANEL FULL FACED INTO THE FRESHLY APPLIED RFP AND SLIDE AGAINST THE ADJACENT PANEL.
10. PRESS THE PANEL WITH THE RUBBER ROLLER SO THAT STO-RFP FLOWS OUT AT THE SIDES OF THE JOINTS.
11. THERE SHALL BE NO GAPS OR CAVITIES.
12. ALLOW EXCESS STO-RFP TO BRIEFLY HARDEN AND REMOVE WITH A SPATULA.
13. WIPE OFF ANY REMAINING STO-RFP WITH A MOIST SPONGE.
14. ALLOW THE RFP TO DRY SUFFICIENTLY AND APPLY STO-AQUA TOP SATIN WITH THE STO-WIDE BRUSH M³ TO THE STOVENEER WOOD PANELS.
15. LEAVE TO DRY THEN APPLY A SECOND PAINT COAT.

SAFE WORKING PRACTICE

1. HAVE SUFFICIENT PEOPLE TO LIFT OR POSITION PANEL ON SITE (MINIMUM TWO MAN LIFT)
2. WEAR PROTECTIVE CLOTHING, EYE AND EAR PROTECTION AND DUST MASK OR RESPIRATOR WHEN CUTTING OR SANDING.
3. USE A CIRCULAR SAW FITTED WITH A DIAMOND BLADE AND HEPA VACUUM WHEN CUTTING PANEL.
4. CONTAIN CUTTING AREA TO MINIMIZE DUST AND WARN OTHER IN IMMEDIATE VICINITY- HEPA VACUUM UP RESIDUE.
5. PROVIDE SUITABLE ACCESS PLATFORMS, EQUIPMENT AND TOOLS TO CARRY OUT THE WORK.
6. MAINTAIN HEALTH AND SAFETY REGULATIONS AND FIRST AID EQUIPMENT IN ACCORDANCE WITH LEGISLATION.



SCALE 1:50

STO POREN PANEL	STOVENEER WOOD SYSTEM	VWPP 004
	SHEET LAYOUT	2020

The information contained on this page is based on our experience and research at the date of issue. The detail is for use by Registered Architects, Licensed Designers or Chartered Engineers to assist in developing project details using Sto Systems. Stoanz Ltd reserve the right to alter or update information at any time without prior notice and it is the responsibility of the designer, project manager or Sto contractor to insure they have and use the current Sto details and specifications on site.